

# T5N, R91W, 6th P.M.

## SWEPI LP

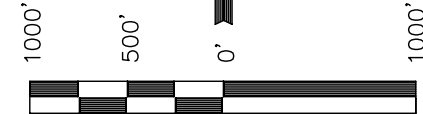
Well location, NORTH CASTOR GULCH #1-16,  
located as shown in TRACT 66 of Section 16,  
T5N, R91W, 6th P.M., Moffat County, Colorado.

### BASIS OF ELEVATION

SPOT ELEVATION AT THE NORTHEAST CORNER OF SECTION 31,  
T5N, R90W, 6th P.M. TAKEN FROM THE HAMILTON  
QUADRANGLE, COLORADO, MOFFAT COUNTY, 7.5 MINUTE QUAD  
(TOPOGRAPHIC MAP) PUBLISHED BY THE UNITED STATES  
DEPARTMENT OF THE INTERIOR, GEOLOGICAL SURVEY. SAID  
ELEVATION IS MARKED AS BEING 6664 FEET.

### BASIS OF BEARINGS

BASIS OF BEARINGS IS A G.P.S. OBSERVATION.



SCALE

### CERTIFICATE

THIS IS TO CERTIFY THAT THE ABOVE PLAT WAS PREPARED FROM  
FIELD NOTES OF ACTUAL SURVEYS MADE BY ME OR UNDER MY  
SUPERVISION AND THAT THE SAME ARE TRUE AND CORRECT TO THE  
BEST OF MY KNOWLEDGE AND BELIEF.

*[Signature]*  
REGISTERED LAND SURVEYOR  
REGISTRATION NO. 17492  
STATE OF COLORADO

**UINTAH ENGINEERING & LAND SURVEYING**  
85 SOUTH 200 EAST - VERNAL, UTAH 84078  
(435) 789-1017

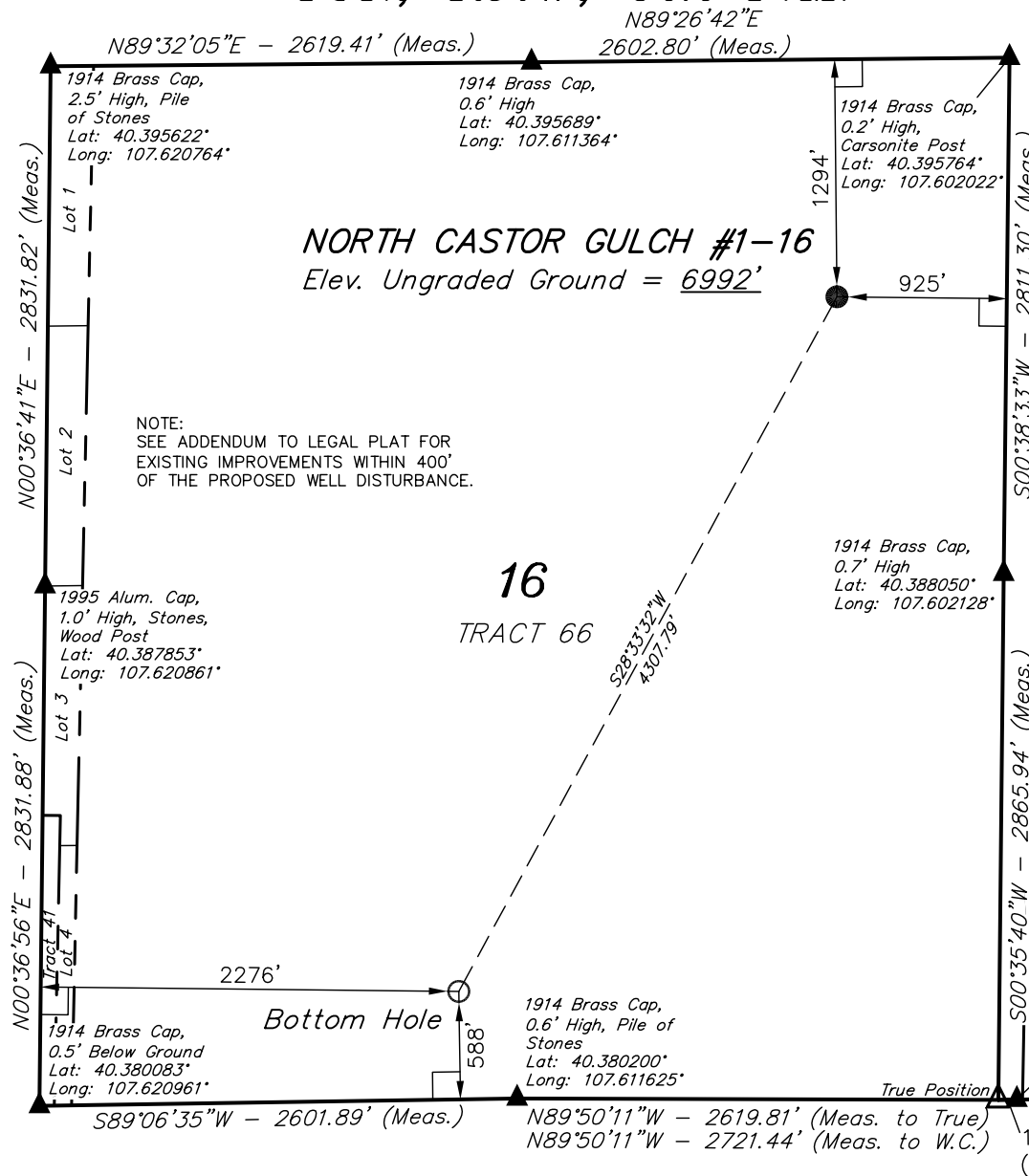
### LEGEND:

- = 90° SYMBOL
- = PROPOSED WELL HEAD.
- = SECTION CORNERS LOCATED

PDOP = 1.5

NAD 83 (TARGET BOTTOM HOLE)	NAD 83 (SURFACE LOCATION)
LATITUDE = 40°22'54.48" (40.381800)	LATITUDE = 40°23'31.88" (40.392189)
LONGITUDE = 107°36'45.97" (107.612769)	LONGITUDE = 107°36'19.41" (107.605392)
NAD 27 (TARGET BOTTOM HOLE)	NAD 27 (SURFACE LOCATION)
LATITUDE = 40°22'54.58" (40.381828)	LATITUDE = 40°23'31.98" (40.392217)
LONGITUDE = 107°36'43.73" (107.612147)	LONGITUDE = 107°36'17.17" (107.604769)

SCALE 1" = 1000'	DATE SURVEYED: 10-05-11	DATE DRAWN: 12-05-11
PARTY B.H. N.F. J.I.	REFERENCES G.L.O. PLAT	
WEATHER COOL	FILE SWEPI LP	





SWEPI LP  
ADDENDUM TO LEGAL PLAT FOR  
NORTH CASTOR GULCH #1-16  
SECTION 16, T5N, R91W, 6th P.M.  
1294' FNL 925' FEL

SCALE: 1" = 200'  
DATE: 12-05-11  
DRAWN BY: J.I.

