

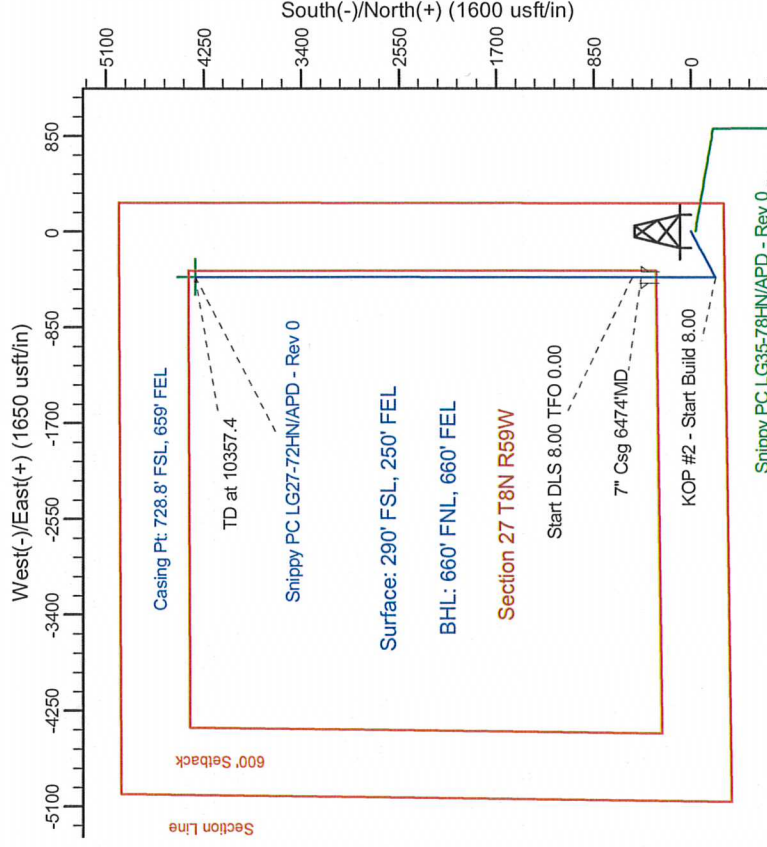
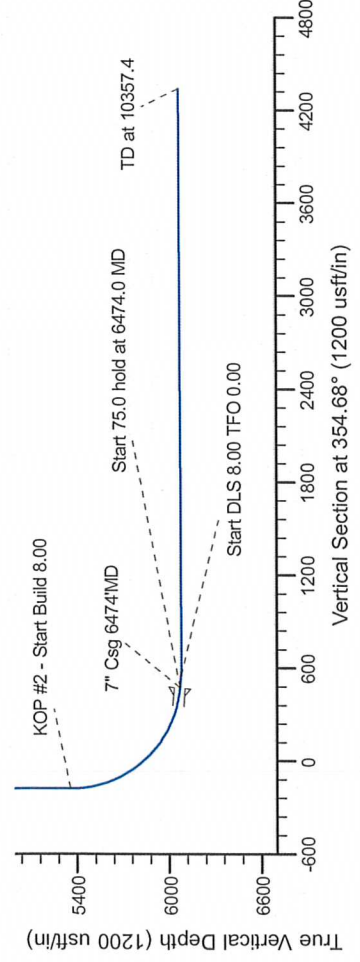
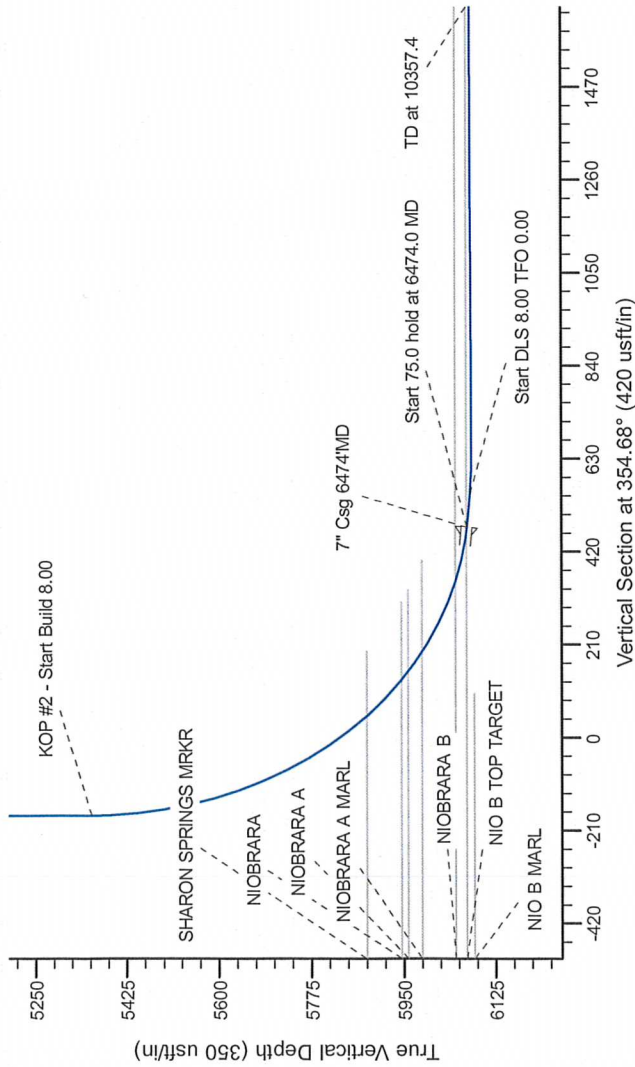
Project: Wattenberg Field  
Site: LG (Sec.27-T08N-R59W) Weld County, CO  
Well: Snippy PC LG27-72HN  
Wellbore: Original Drilling  
Design: APD - Rev 0

# Northern Region Drilling

Geodetic System: US State Plane 1983  
Datum: North American Datum 1983  
Ellipsoid: GRS 1980  
Zone: Colorado Northern Zone  
System Datum: Mean Sea Level

## SECTION DETAILS

Sec	MD	Inc	Azi	TVD	+N/-S	+E/-W	Dleg	TFace	VSecl	Target
1	0.0	0.00	0.00	0.0	0.0	0.0	0.00	0.00	0.0	
2	2000.0	0.00	0.00	2000.0	0.0	0.0	0.00	0.00	0.0	
3	2603.1	15.08	242.33	2596.2	-36.6	-69.9	2.50	242.33	-30.0	
4	3776.1	15.08	242.33	3728.8	-178.4	-340.1	0.00	0.00	-146.0	
5	4379.3	0.00	0.00	4325.0	-215.0	-410.0	2.50	180.00	-176.0	
6	5411.5	0.00	0.00	5357.2	-215.0	-410.0	0.00	0.00	-176.0	
7	6474.0	85.00	0.09	6070.7	438.8	-409.0	8.00	0.09	474.8	
8	6549.0	85.00	0.09	6077.2	513.5	-408.9	0.00	0.00	549.2	
9	6613.4	90.15	0.09	6080.0	577.8	-408.8	8.00	0.00	613.3	
10	10357.4	90.15	0.09	6070.0	4321.8	-402.9	0.00	0.00	4340.6	



T

G

M

↑

↑

↑

Azimuths to Grid North

True North: -1.00°

Magnetic North: 7.30°

Magnetic Field

Strength: 53283.2snT

Dip Angle: 67.35°

Date: 2/14/2012

Model: IGRF200510

WELL DETAILS: Snippy PC LG27-72HN			
North	East	Ground Level	Longitude
1474791.60	3428931.09	4920.0	-103.954670
Latitude 40.626440			
Plan: APD - Rev 0 (Snippy PC LG27-72HN/Original Drilling)			
Created By: Carrie Willers		Date: 17-28, February 14 2012	