

---

# **OXY GRAND JUNCTION EBUSINESS**

---

**CC 697-05-22A  
GRANDVALLEY  
Garfield County , Colorado**

**Cement via Annulus  
24-Jan-2012**

**Post Job Report**

## The Road to Excellence Starts with Safety

<b>Sold To #:</b> 344034		<b>Ship To #:</b> 2903378		<b>Quote #:</b>		<b>Sales Order #:</b> 9230915	
<b>Customer:</b> OXY GRAND JUNCTION EBUSINESS				<b>Customer Rep:</b> Wyler, Cal			
<b>Well Name:</b> CC			<b>Well #:</b> 697-05-22A			<b>API/UWI #:</b> 05-045-20361	
<b>Field:</b> GRANDVALLEY		<b>City (SAP):</b> PARACHUTE		<b>County/Parish:</b> Garfield		<b>State:</b> Colorado	
<b>Lat:</b> N 39.555 deg. OR N 39 deg. 33 min. 16.56 secs.				<b>Long:</b> W 108.242 deg. OR W -109 deg. 45 min. 27.756 secs.			
<b>Contractor:</b> H&P 353			<b>Rig/Platform Name/Num:</b> H&P 353				
<b>Job Purpose:</b> Cement via Annulus							
<b>Well Type:</b> Development Well				<b>Job Type:</b> Cement via Annulus			
<b>Sales Person:</b> HIMES, JEFFREY			<b>Srvc Supervisor:</b> ERIC CARTER		<b>MBU ID Emp #:</b> 345598		
<b>Job Personnel</b>							
<b>HES Emp Name</b>	<b>Exp Hrs</b>	<b>Emp #</b>	<b>HES Emp Name</b>	<b>Exp Hrs</b>	<b>Emp #</b>	<b>HES Emp Name</b>	<b>Exp Hrs</b>
BANKS, BRENT A	10	371353	BATH, KYLE Thomas	10	477632	CARTER, ERIC Earl	10
JENKINS, DEMON Lashaun	4	457892	NICKLE, RYON	10	454759		
<b>Equipment</b>							
<b>HES Unit #</b>	<b>Distance-1 way</b>	<b>HES Unit #</b>	<b>Distance-1 way</b>	<b>HES Unit #</b>	<b>Distance-1 way</b>	<b>HES Unit #</b>	<b>Distance-1 way</b>
10567589C	120 mile	10867322	120 mile	10998512	120 mile	11259885	120 mile
11808829	120 mile						
<b>Job Hours</b>							
<b>Date</b>	<b>On Location Hours</b>	<b>Operating Hours</b>	<b>Date</b>	<b>On Location Hours</b>	<b>Operating Hours</b>	<b>Date</b>	<b>On Location Hours</b>
1/24/12	10	1.5					
<b>TOTAL</b>			<i>Total is the sum of each column separately</i>				
<b>Job</b>				<b>Job Times</b>			
<b>Formation Name</b>				<b>Date</b>		<b>Time</b>	<b>Time Zone</b>
<b>Formation Depth (MD)</b>	<b>Top</b>	<b>Bottom</b>		<b>Called Out</b>			
	0 FT.			<b>On Location</b>			
<b>Form Type</b>	<b>BHST</b>			<b>Job Started</b>		24 - Jan - 2012	19:12
<b>Job depth MD</b>	2300. ft	<b>Job Depth TVD</b>	2300. ft	<b>Job Completed</b>		24 - Jan - 2012	20:38
<b>Water Depth</b>		<b>Wk Ht Above Floor</b>		<b>Departed Loc</b>		24 - Jan - 2012	22:00
<b>Perforation Depth (MD)</b>	<b>From</b>	<b>To</b>					
<b>Well Data</b>							
<b>Description</b>	<b>New / Used</b>	<b>Max pressure psig</b>	<b>Size in</b>	<b>ID in</b>	<b>Weight lbm/ft</b>	<b>Thread</b>	<b>Grade</b>
<b>Sales/Rental/3<sup>rd</sup> Party (HES)</b>							
<b>Description</b>				<b>Qty</b>	<b>Qty uom</b>	<b>Depth</b>	<b>Supplier</b>
R/A DENSOMETER W/CHART RECORDER,/JOB,ZI				1	JOB		
PORT. DATA ACQUIS. W/OPTICEM RT W/HES				1	EA		
ADC (AUTO DENSITY CTRL) SYS, /JOB,ZI				1	JOB		
<b>Tools and Accessories</b>							
<b>Type</b>	<b>Size</b>	<b>Qty</b>	<b>Make</b>	<b>Depth</b>	<b>Type</b>	<b>Size</b>	<b>Qty</b>
Guide Shoe					Packer		
Float Shoe					Bridge Plug		
Float Collar					Retainer		
Insert Float							
Stage Tool							
<b>Miscellaneous Materials</b>							
<b>Gelling Agt</b>		<b>Conc</b>		<b>Surfactant</b>		<b>Conc</b>	
<b>Treatment Fld</b>		<b>Conc</b>		<b>Inhibitor</b>		<b>Conc</b>	
				<b>Acid Type</b>		<b>Qty</b>	<b>Conc %</b>
				<b>Sand Type</b>		<b>Size</b>	<b>Qty</b>

Fluid Data										
Stage/Plug #: 1										
Fluid #	Stage Type	Fluid Name	Qty	Qty uom	Mixing Density lbm/gal	Yield ft <sup>3</sup> /sk	Mix Fluid Gal/sk	Rate bbl/min	Total Mix Fluid Gal/sk	
1	Water Spacer		5.00	bbl	.	.0	.0	.5		
2	Lead Cement	VERSACEM (TM) SYSTEM (452010)	177.0	sacks	12.3	2.33	12.62	1	12.62	
3	Displacement		5	bbl	.	.0	.0	2		
Calculated Values		Pressures		Volumes						
Displacement		Shut In: Instant		Lost Returns		Cement Slurry		73.5	Pad	
Top Of Cement		5 Min		Cement Returns		2	Actual Displacement		Treatment	
Frac Gradient		15 Min		Spacers		5	Load and Breakdown		Total Job 83.5	
Rates										
Circulating		Mixing		1		Displacement		2		Avg. Job 1
Cement Left In Pipe		Amount	0 ft	Reason	Shoe Joint					
Frac Ring # 1 @	ID	Frac ring # 2 @	ID	Frac Ring # 3 @	ID	Frac Ring # 4 @	ID			
The Information Stated Herein Is Correct				Customer Representative Signature						

*The Road to Excellence Starts with Safety*

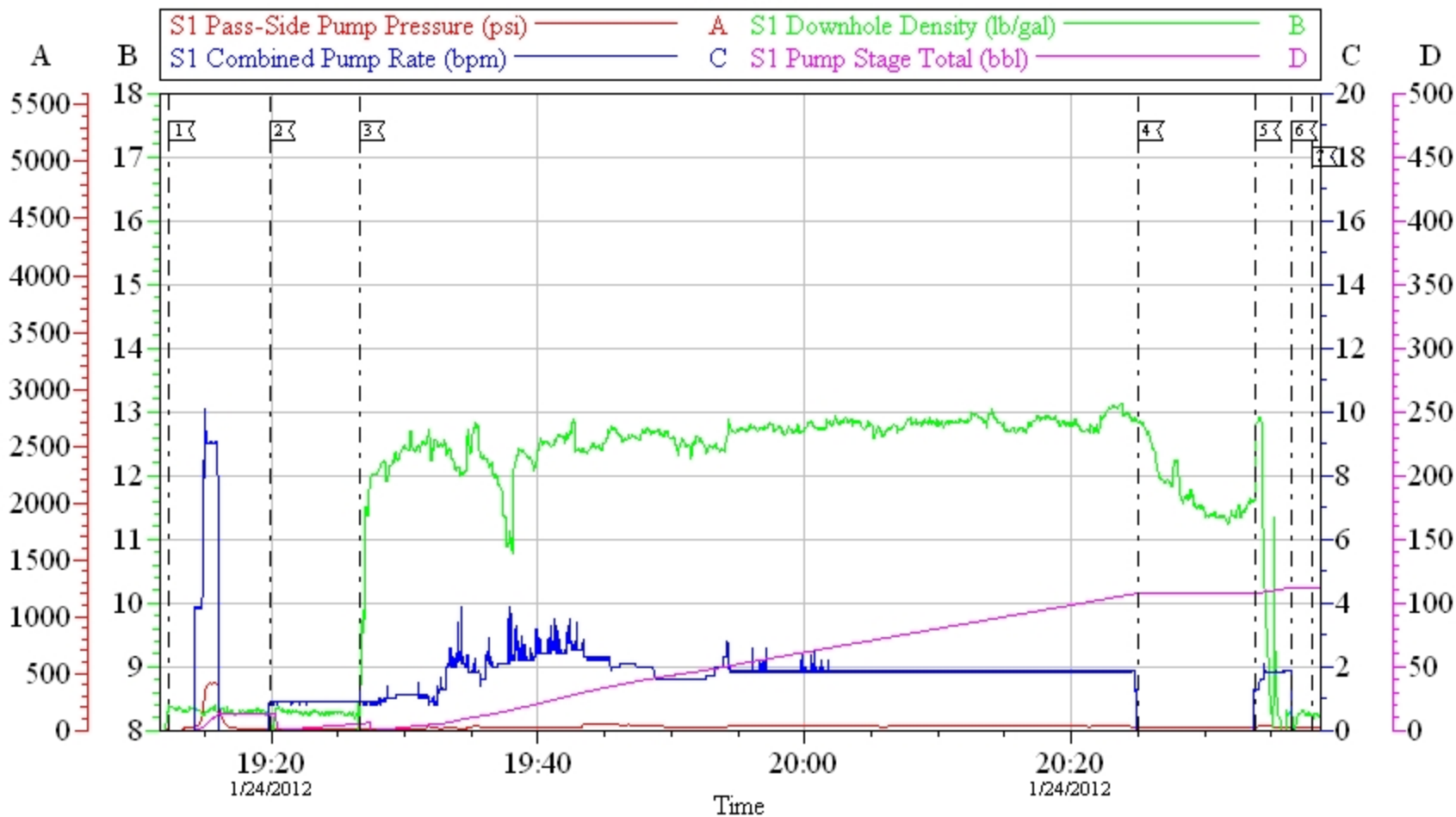
<b>Sold To #:</b> 344034	<b>Ship To #:</b> 2903378	<b>Quote #:</b>	<b>Sales Order #:</b> 9230915
<b>Customer:</b> OXY GRAND JUNCTION EBUSINESS		<b>Customer Rep:</b> Wyler, Cal	
<b>Well Name:</b> CC	<b>Well #:</b> 697-05-22A	<b>API/UWI #:</b> 05-045-20361	
<b>Field:</b> GRANDVALLEY	<b>City (SAP):</b> PARACHUTE	<b>County/Parish:</b> Garfield	<b>State:</b> Colorado
<b>Legal Description:</b>			
<b>Lat:</b> N 39.555 deg. OR N 39 deg. 33 min. 16.56 secs.		<b>Long:</b> W 108.242 deg. OR W -109 deg. 45 min. 27.756 secs.	
<b>Contractor:</b> H&P 353		<b>Rig/Platform Name/Num:</b> H&P 353	
<b>Job Purpose:</b> Cement via Annulus			<b>Ticket Amount:</b>
<b>Well Type:</b> Development Well		<b>Job Type:</b> Cement via Annulus	
<b>Sales Person:</b> HIMES, JEFFREY		<b>Srv Supervisor:</b> ERIC CARTER	<b>MBU ID Emp #:</b> 345598

Activity Description	Date/Time	Cht #	Rate bbl/min	Volume bbl		Pressure psig		Comments
				Stage	Total	Tubing	Casing	
Arrive at Location from Other Job or Site	01/24/2012 18:00							CREW ALREADY ON LOCATION FROM PREVIOUS WELL, CEMENT BULK TRUCK ARRIVED AT 18:00
Pre-Rig Up Safety Meeting	01/24/2012 18:10							ATTENDED BY ALL HES CREW
Rig-Up Equipment	01/24/2012 18:20							RIG UP TO WELL HEAD 2"
Pre-Job Safety Meeting	01/24/2012 19:00							ATTENDED BY ALL HES CREW AND COMPANY REP
Pump Spacer 1	01/24/2012 19:19		0.5	5			14.0	FRESH WATER
Start Job	01/24/2012 19:20							HES TO PUMP UNTIL CEMENT CAME TO SURFACE, PUMPED DOWN 9.625" CASING
Pump Lead Cement	01/24/2012 19:26		1	73.5			30.0	177 SKS MIXED AT 12.3 PPG, 2.33 YIELD, 12.62 GL/SK, VOLUMES ARE BASED OFF OF MIX WATER USED,
Shutdown	01/24/2012 20:25							SHUTDOWN, CEMENT DID NOT FALL BACK
Pump Spacer 1	01/24/2012 20:33		2	5			10.0	FRESH WATER
Shutdown	01/24/2012 20:36							
End Job	01/24/2012 20:38							2 BBLS CEMENT TO SURFACE
Post-Job Safety Meeting (Pre Rig-Down)	01/24/2012 20:40							ATTENDED BY ALL HES CREW
Rig-Down Equipment	01/24/2012 20:50							

Activity Description	Date/Time	Cht #	Rate bbl/ min	Volume bbl		Pressure psig		Comments
				Stage	Total	Tubing	Casing	
Depart Location Safety Meeting	01/24/2012 21:50							ATTENDED BY ALL HES CREW
Crew Leave Location	01/24/2012 22:00							THANK YOU FOR USING HALLIBURTON CEMENT, ERIC CARTER AND CREW.

# OXY-CC 697-05-22A

TOP OUT



## Local Event Log

1 STARTJOB	19:12:22	2 PUMP H2O	19:19:56	3 PUMP LEAD CEMENT	19:26:38
4 SHUTDOWN	20:25:02	5 PUMP H2O	20:33:50	6 SHUTDOWN	20:36:32
7 END JOB	20:38:04				

Customer: OXY GRAND JUNCTION EBUSINESS  
Well Description: CC 697-05-22A  
Company Rep: TERRY R.

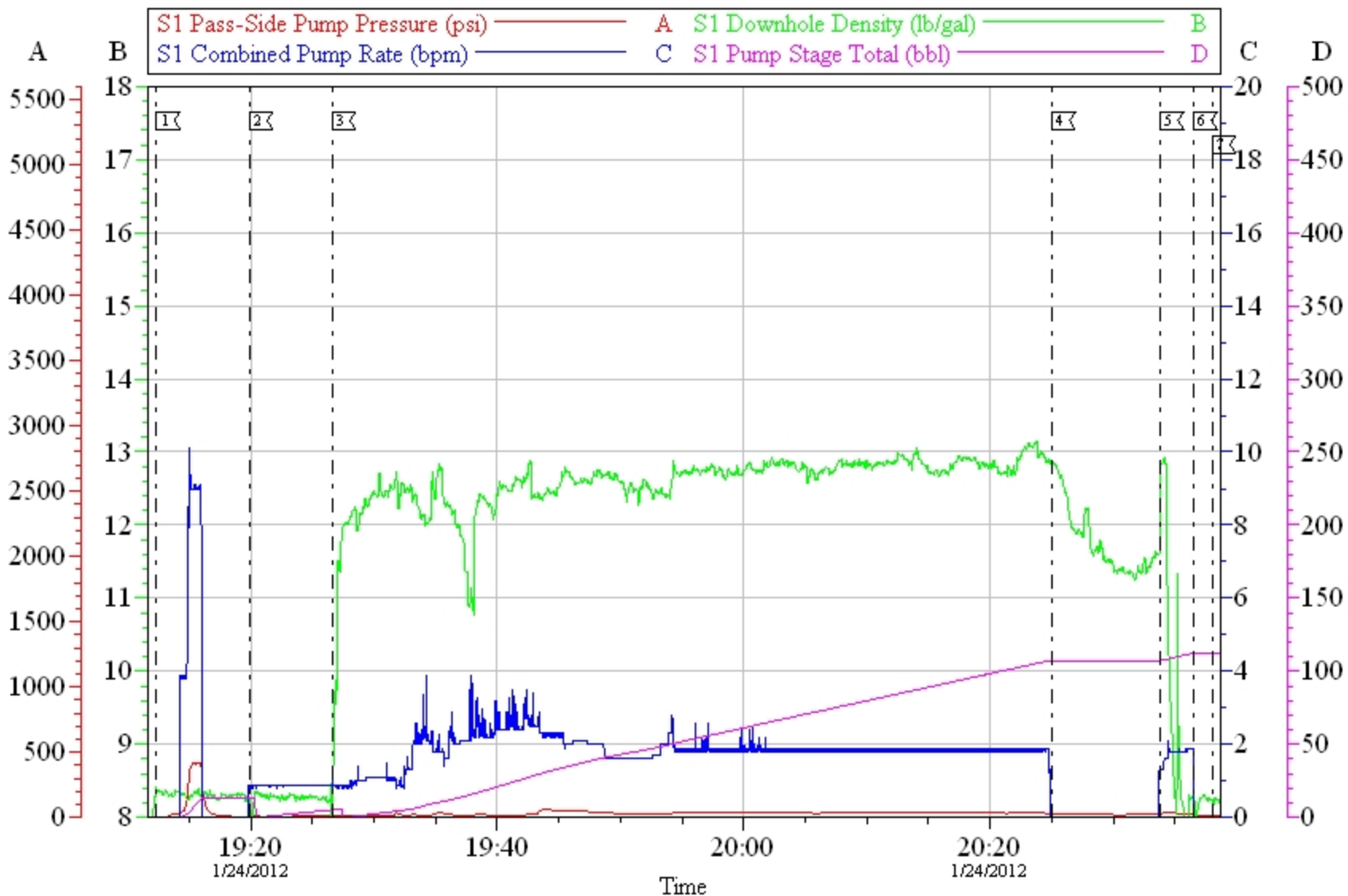
Job Date: 24-Jan-2012  
Job Type: TOP OUT  
Cement Supervisor: ERIC CARTER

Sales Order #: 9230915  
ADC Used: YES  
Elite #/Operator: 3/BRENT BANKS

OptiCem v6.4.0  
24-Jan-12 21:26

# OXY-CC 697-05-22A

TOP OUT



Customer: OXY GRAND JUNCTION EBUSINESS  
Well Description: CC 697-05-22A  
Company Rep: TERRY R.





Job Date: 24-Jan-2012  
Job Type: TOP OUT  
Cement Supervisor: ERIC CARTER

Sales Order #: 9230915  
ADC Used: YES  
Elite #/Operator: 3/BRENT BANKS

OptiCem v6.4.0  
24-Jan-12 21:27

# HALLIBURTON

## Water Analysis Report

Company:	 OXY	Date:	 1/24/2012
Submitted by:	ERIC CARTER	Date Rec.:	 1/24/2012
Attention:	J.Trout	S.O.#	9230915
Lease	 H•P 353	Job Type:	TOP OUT
Well #	CC 697-05-22A		

Specific Gravity	MAX	1
pH	8	7
Potassium (K)	5000	0 Mg / L
Hrdness	500	250 Mg / L
Iron (FE2)	300	0 Mg / L
Chlorides (Cl)	3000	0 Mg / L
Sulfates (SO <sub>4</sub> )	1500	<200 Mg / L
Temp	40-80	67 Deg
Total Dissolved Solids		700 Mg / L

Respectfully:  ERIC CARTER

Title: CEMENTING SUPERVISOR

Location: Grand Junction, CO

NOTICE: This report is limited to the described sample tested. Any person using or relying on this report agrees that Halliburton shall not be liable for any loss or damage whether due to act or omission resulting from such report or its use.



<b>Sales Order #:</b> 9230915	<b>Line Item:</b> 10	<b>Survey Conducted Date:</b> 1/24/2012
<b>Customer:</b> OXY GRAND JUNCTION EBUSINESS		<b>Job Type (BOM):</b> CMT VIA ANNULUS BOM
<b>Customer Representative:</b> TERRY R.		<b>API / UWI: (leave blank if unknown)</b> 05-045-20361
<b>Well Name:</b> CC		<b>Well Number:</b> 697-05-22A
<b>Well Type:</b> Development Well	<b>Well Country:</b> United States of America	
<b>H2S Present:</b>	<b>Well State:</b> Colorado	<b>Well County:</b> Garfield

Dear Customer,

We hope that you were satisfied with the service quality of this job performed by Halliburton. It is the aim of our management and service personnel to deliver equipment and service of a standard unmatched in the service sector of the energy industry.

Please take the time to let us know if our performance met with your satisfaction. Please be as critical as possible to ensure we constantly improve our service. Your comments are of great value to us and are intended for the exclusive use of Halliburton.

### CUSTOMER SATISFACTION SURVEY

CATEGORY	CUSTOMER SATISFACTION RESPONSE	
Survey Conducted Date	The date the survey was conducted	1/24/2012
Survey Interviewer	The survey interviewer is the person who initiated the survey.	ERIC CARTER (HX15491)
Customer Participation	Did the customer participate in this survey? (Y/N)	Yes
Customer Representative	Enter the Customer representative name	TERRY R.
HSE	Was our HSE performance satisfactory? Circle Y or N	Yes
Equipment	Were you satisfied with our Equipment? Circle Y or N	Yes
Personnel	Were you satisfied with our people? Circle Y or N	Yes
Customer Comment	Customer's Comment	

CUSTOMER SIGNATURE

<b>Sales Order #:</b> 9230915	<b>Line Item:</b> 10	<b>Survey Conducted Date:</b> 1/24/2012
<b>Customer:</b> OXY GRAND JUNCTION EBUSINESS		<b>Job Type (BOM):</b> CMT VIA ANNULUS BOM
<b>Customer Representative:</b> TERRY R.		<b>API / UWI: (leave blank if unknown)</b> 05-045-20361
<b>Well Name:</b> CC		<b>Well Number:</b> 697-05-22A
<b>Well Type:</b> Development Well	<b>Well Country:</b> United States of America	
<b>H2S Present:</b>	<b>Well State:</b> Colorado	<b>Well County:</b> Garfield

*KEY PERFORMANCE INDICATORS*

General	
<b>Survey Conducted Date</b> The date the survey was conducted	1/24/2012

Cementing KPI Survey	
<b>Type of Job</b> Select the type of job. (Cementing or Non-Cementing)	0
<b>Select the Maximum Deviation range for this Job</b> What is the highest deviation for the job you just completed? This may not be the maximum well deviation.	Vertical
<b>Total Operating Time (hours)</b> Total Operating Hours Including Rig-up, Pumping, Rig-down. Enter in decimal format.	4
<b>HSE Incident, Accident, Injury</b> HSE Incident, Accident, Injury. This should be recordable incidents only.	No
<b>Was the job purpose achieved?</b> Was the job delivered correctly as per customer agreed design?	Yes
<b>Operating Hours (Pumping Hours)</b> Total number of hours pumping fluid on this job. Enter in decimal format.	1.5
<b>Customer Non-Productive Rig Time (hrs)</b> Lost time due to Halliburton in the start, execution, or completion of an ordered service or product, or delays in a follow-on service. Enter in decimal format. 0 if none.	0
<b>Type of Rig Classification Job Was Performed</b> Type Of Rig (classification) Job Was Performed On	Drilling Rig (Portable)
<b>Number Of JSAs Performed</b> Number Of Jsas Performed	5
<b>Number of Unplanned Shutdowns</b> Unplanned shutdown is when injection stops for any period of time.	0
<b>Was this a Primary Cement Job (Yes / No)</b>	No

<b>Sales Order #:</b> 9230915	<b>Line Item:</b> 10	<b>Survey Conducted Date:</b> 1/24/2012
<b>Customer:</b> OXY GRAND JUNCTION EBUSINESS		<b>Job Type (BOM):</b> CMT VIA ANNULUS BOM
<b>Customer Representative:</b> TERRY R.		<b>API / UWI: (leave blank if unknown)</b> 05-045-20361
<b>Well Name:</b> CC		<b>Well Number:</b> 697-05-22A
<b>Well Type:</b> Development Well	<b>Well Country:</b> United States of America	
<b>H2S Present:</b>	<b>Well State:</b> Colorado	<b>Well County:</b> Garfield

Primary Cement Job= Casing job, Liner job, or Tie-back job.	
<b>Was this a Plug or a Squeeze Job?</b> Please select the appropriate choice	Yes
<b>Was this a Primary or a Remedial Job?</b> Kick off plug, Plug to Abandon, LCM plug or Planned Liner Top Squeeze, Squeeze of existing perforations, Squeeze of casing leak	No
<b>Mixing Density of Job Stayed in Designed Density Range (0-100%)</b> Density Range defined as +/- .20 ppg. Calculation: Total BBLs cement mixed at designed density divided by total BBLs of cement multiplied by 100	90
<b>Was Automated Density Control Used?</b> Was Automated Density Control (ADC) Used ?	Yes
<b>Pump Rate (percent) of Job Stayed At Designed Pump Rate</b> Pump Rate range defined as +/- 1bbl/min. Calculation: Total BBLs of fluid pumped at the designed rate divided by Total BBLs of fluid pumped, multiplied by 100	90
<b>Nbr of Remedial Sqz Jobs Rqd - Competition</b> Number Of Remedial Squeeze Jobs Required After Primary Job Performed By Competition	0
<b>Nbr of Remedial Plug Jobs Rqd - HES</b> Number Of Remedial Plug Jobs Needed After Primary Plug Pumped By HES	0
<b>Nbr of Remedial Sqz Jobs Rqd - HES</b> Number Of Remedial Squeeze Jobs Required After Primary Job Performed By HES	0