

PROPOSED SPACING UNIT AND DESCRIPTION

O-1 25-11-6

Spacing Unit - Sec 25: W/2 NW/4
Sec 26: E/2 NE/4

SURFACE LOCATION

NAD 83

LAT = 40.46571°N

LON = 104.85208°W

P.D.O.P. = 3.0

GPS OPERATOR= C. VANMATRE

BOTTOM HOLE LOCATION

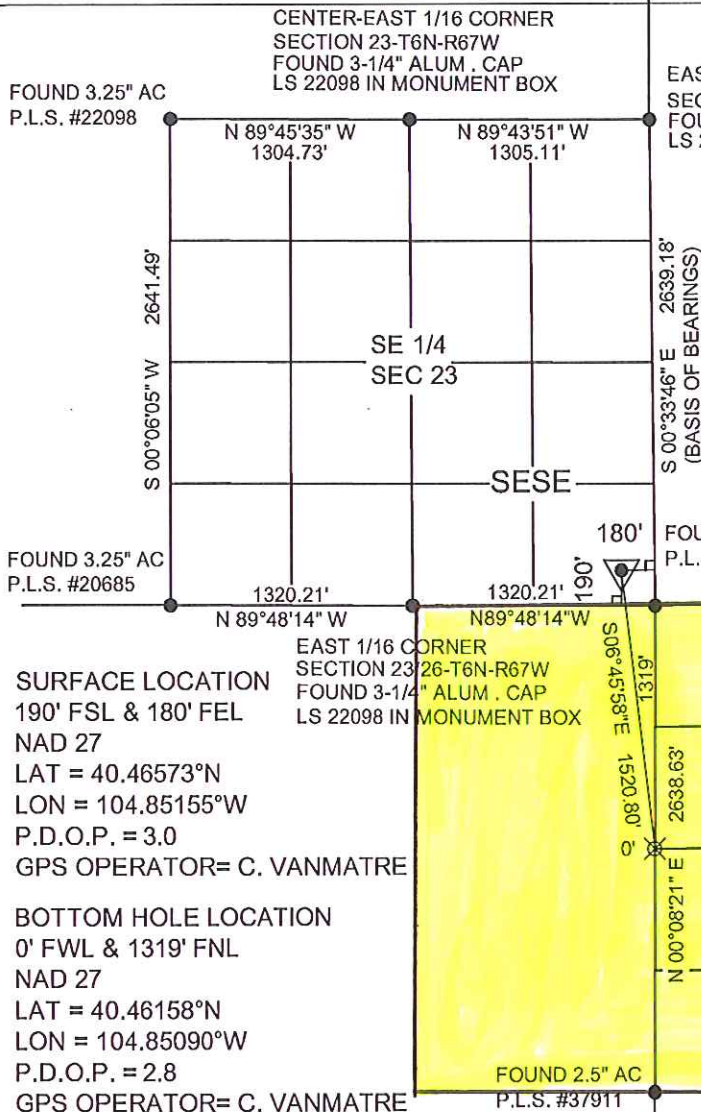
NAD 83

LAT = 40.46156°N

LON = 104.85143°W

P.D.O.P. = 2.8

GPS OPERATOR= C. VANMATRE



SURFACE LOCATION

190' FSL & 180' FEL

NAD 27

LAT = 40.46573°N

LON = 104.85155°W

P.D.O.P. = 3.0

GPS OPERATOR= C. VANMATRE

BOTTOM HOLE LOCATION

0' FWL & 1319' FNL

NAD 27

LAT = 40.46158°N

LON = 104.85090°W

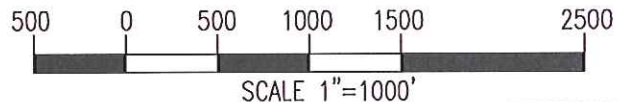
P.D.O.P. = 2.8

GPS OPERATOR= C. VANMATRE

WELL: O-1 25-11-6 TO BE LOCATED 190' FSL AND 180' FEL IN SECTION 23, TOWNSHIP 6 NORTH, RANGE 67 WEST OF THE 6TH P.M.
LOCATION FALLS IN: CORN FIELD GROUND ELEVATION = 4772' IMPROVEMENTS: PROPOSED WELLS 20' S, 20', AND 40' N OF LOCATION

LEGEND:

- SECTION CORNER (AS NOTED)
- ▼ PROPOSED WELL LOCATION
- ⊗ PROPOSED BOTTOM HOLE LOCATION



NOTES:

1. THIS SURVEY WAS DONE BY GPS METHODS AND CONFORMS TO THE MINIMUM STANDARDS AS SET BY THE C.O.G.C.C. RULE NO. 215.
2. ELEVATIONS SHOWN AT THE WELL HEAD, AS WELL AS HORIZONTAL CONTROL, ARE BASED ON GPS-RTK VALUES DERIVED FROM DOING 2-HOUR STATIC GPS SESSIONS AND REDUCTIONS USING O.P.U.S. SOLUTIONS.
- VERTICAL = NAVD88 HORIZONTAL = NAD83/92
3. THE BEARINGS AS SHOWN HEREON ARE BASED ON GPS OBSERVATIONS BETWEEN THE MONUMENTS SHOWN HEREON AS FOUND IN THE FIELD DATE BELOW.
4. DISTANCES SHOWN ARE AT GROUND LEVEL, AS MEASURED IN THE FIELD, WITH TIES TO WELLS MEASURED AT A PERPENDICULAR TO SECTION LINES.

I, RICHARD B. GABRIEL, A LICENSED PROFESSIONAL LAND SURVEYOR IN THE STATE OF COLORADO DO HEREBY CERTIFY TO:

GREAT WESTERN OIL AND GAS COMPANY THAT THE SURVEY AND WELL LOCATION CERTIFICATE SHOWN HEREON WAS DONE BY ME OR UNDER MY DIRECT SUPERVISION AND THAT THE DRAWING SHOWN HEREON ACCURATELY DEPICTS THE PROPOSED LOCATION OF THE WELL **O-1 25-11-6**. THIS CERTIFICATE DOES NOT REPRESENT A LAND SURVEY PLAT OR IMPROVEMENT SURVEY PLAT AS DEFINED BY C.R.S. 38-51-102 AND CANNOT BE RELIED UPON TO DETERMINE OWNERSHIP.

RICHARD B. GABRIEL P.L.S. #37929
COLORADO LICENSED PROFESSIONAL LAND SURVEYOR
FOR AND ON BEHALF OF POWER SURVEYING CO., INC.

NOTICE: ACCORDING TO COLORADO LAW YOU MUST COMMENCE ANY LEGAL ACTION BASED UPON ANY DEFECT IN THIS SURVEY WITHIN THREE YEARS AFTER YOU FIRST DISCOVER SUCH DEFECT. IN NO EVENT MAY ANY ACTION BASED ON ANY DEFECT IN THIS SURVEY BE COMMENCED MORE THAN TEN YEARS FROM THIS SAID DATE OF THIS CERTIFICATION SHOWN HEREON.



120 W. 84TH AVENUE PH. 303-702-1617
THORNTON, COLORADO 80260 FAX. 303-702-1488
WWW.POWERSURVEYING.COM

DATE OF FIELD WORK: 9-8-11

DATE OF COMPLETION: 9-9-11

PROJECT NUMBER: 501-11-145 REV1