



Mesa Wireline

CEMENT BOND LOG

Company	ENCANA OIL AND GAS (USA) INC.	Company	ENCANA OIL AND GAS (USA) INC.
Well	HELLS HOLE 9101-14 G15 2104	Well	HELLS HOLE 9101-14 G15 2104
Field	HELLS HOLE	Field	HELLS HOLE
County	RIO BLANCO	County	RIO BLANCO
State	COLORADO	State	COLORADO
Location:	API # : 06-103-11885-0000	Other Services	None
SEC. 15 TWP. 2S RGE. 104W		Elevation	
Permanent Datum	GROUNDELEV	Elevation	6966'
Log Measured From	KELLY BUSHING = 22 FT	K.B. 6988'	
Drilling Measured From	KELLY BUSHING	D.F. 6987'	
		G.L. 6986'	

Date	12 NOV 2011		
Run Number	ONE		
Depth Driller	8639'		
Depth Logger	4636'		
Bottom Logged Interval	4636'		
Top Log Interval	SURFACE		
Open Hole Size	8589'		
Type Fluid	WATER		
Density / Viscosity	~8.33 LBS/GAL		
Max. Recorded Temp.	115 DEG F		
Estimated Cement Top	2790'		
Time Well Ready	N/A		
Time Logger on Bottom	1115		
Equipment Number	FL0602W		
Location	GRAND JUNCTION		
Recorded By	M.BERNATCHEZ		
Witnessed By	J.MILLER		
Borehole Record		Tubing Record	
Run Number	Bit	From	To
UKN			
Casing Record	Size	Wgt/Ft	Top
Surface String			Bottom
Prot. String			
Production String	5.5"	17#	SURFACE
Liner	4.5"	13.5#	3476'
			8639'

<<< Fold Here >>>

All interpretations are opinions based on inferences from electrical or other measurements and we cannot and do not guarantee the accuracy or correctness of any interpretation, and we shall not, except in the case of gross or willful negligence on our part, be liable or responsible for any loss, costs, damages, or expenses incurred or sustained by anyone resulting from any interpretation made by any of our officers, agents or employees. These interpretations are also subject to our general terms and conditions set out in our current Price Schedule.

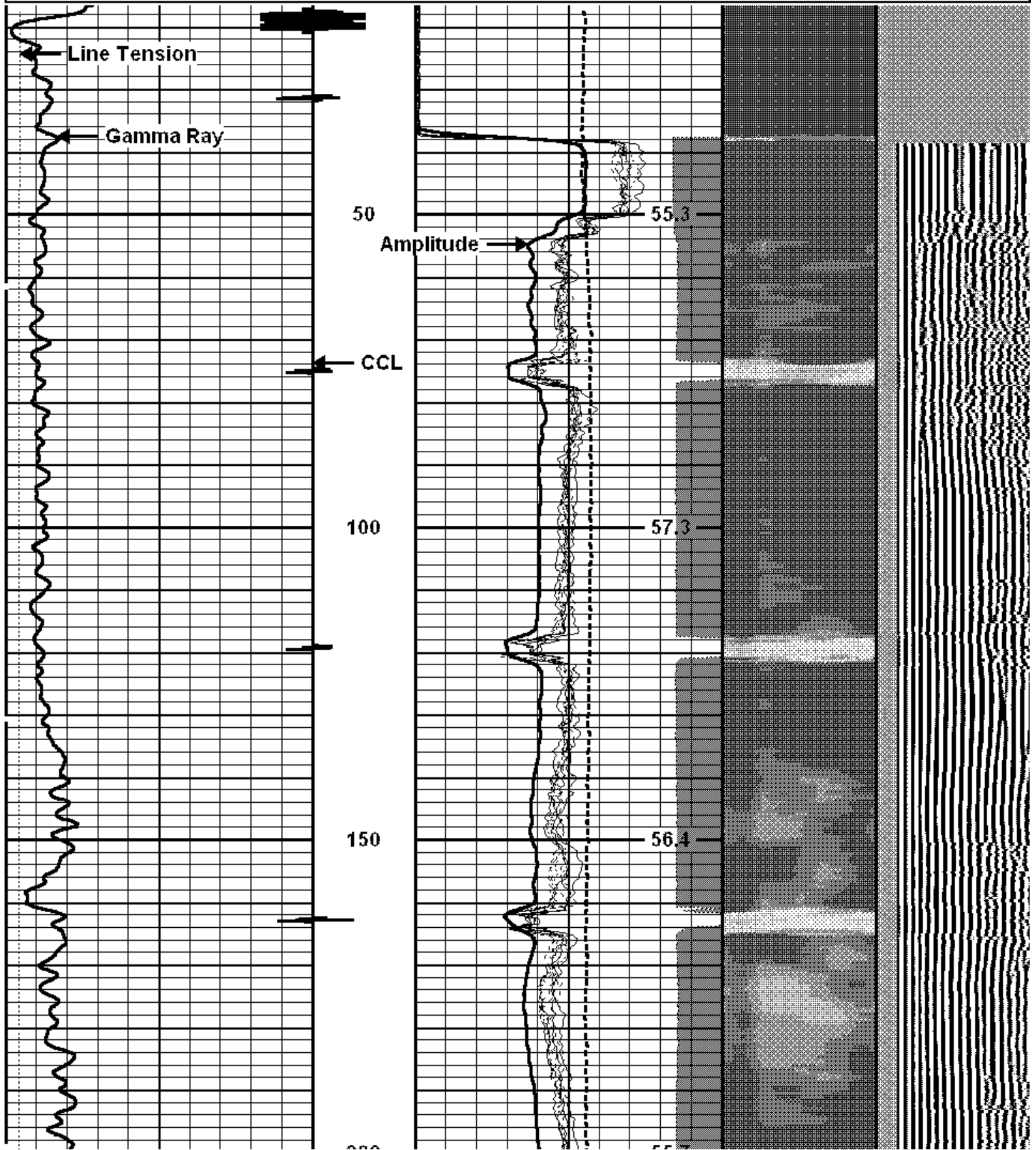
Comments

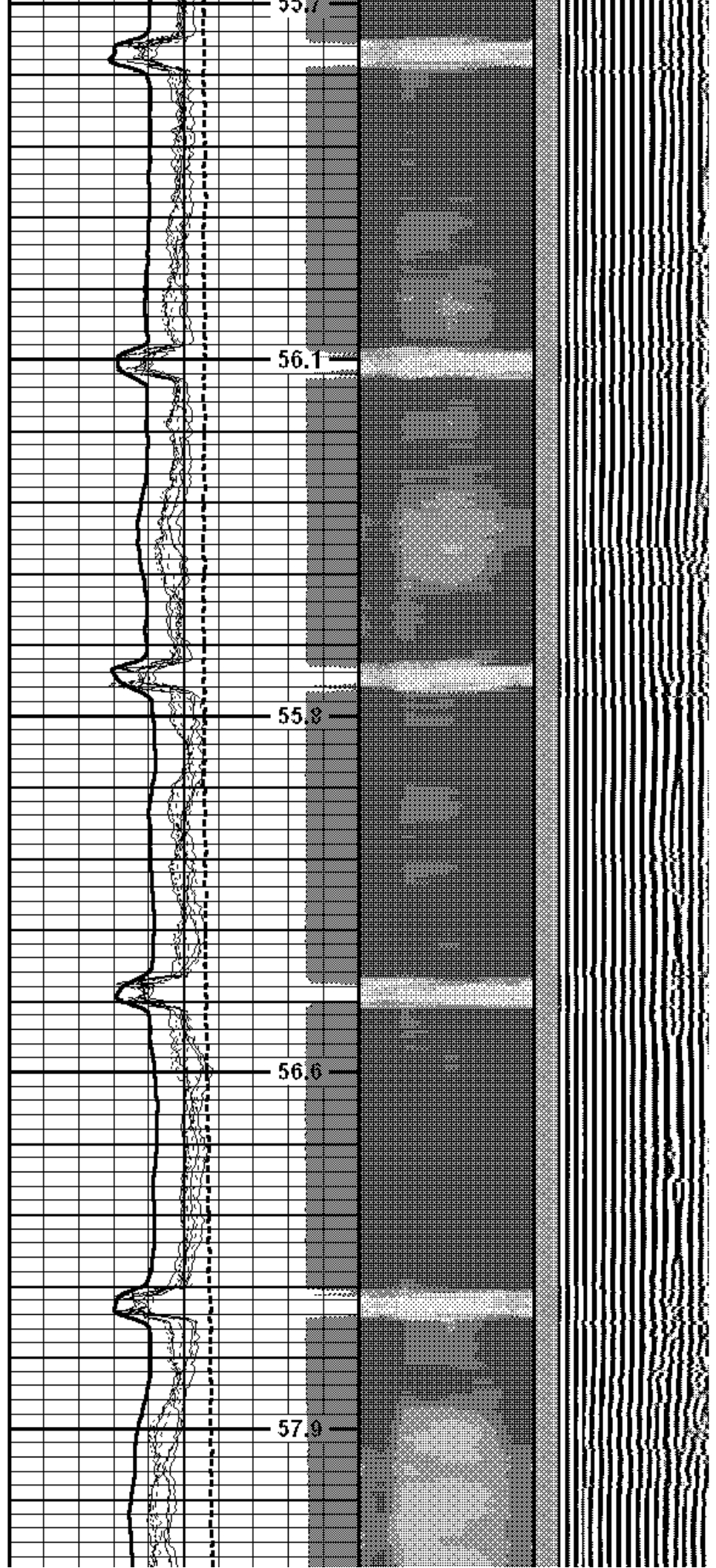
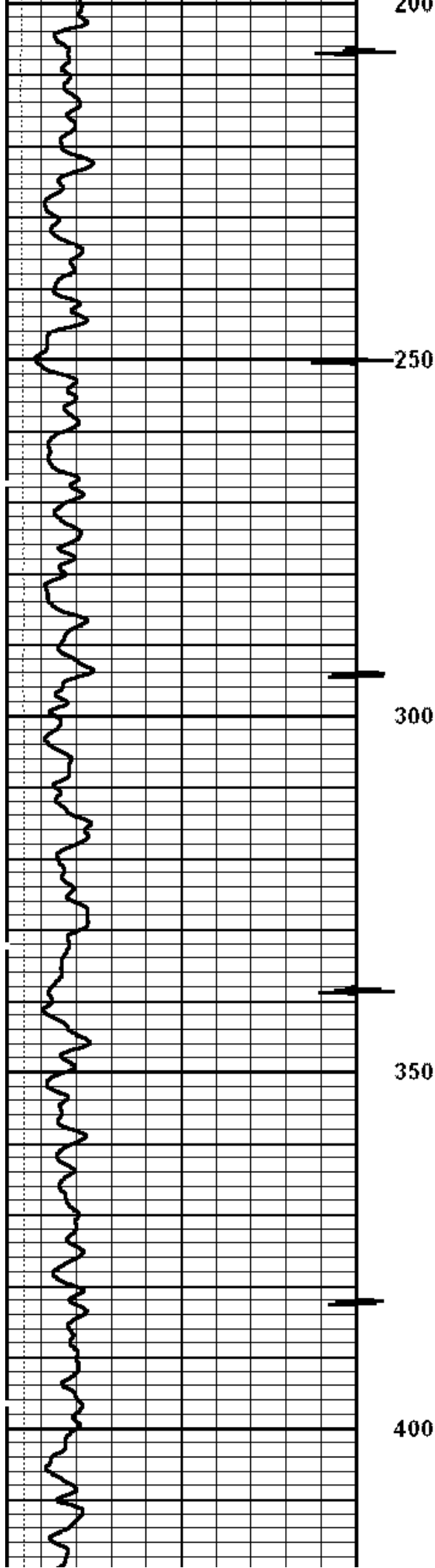
NO LOG AVAILABLE FOR CORRELATION.
SHORT JOINT: 1082' - 1104' & 1460' - 1503' & 2556' - 2576'

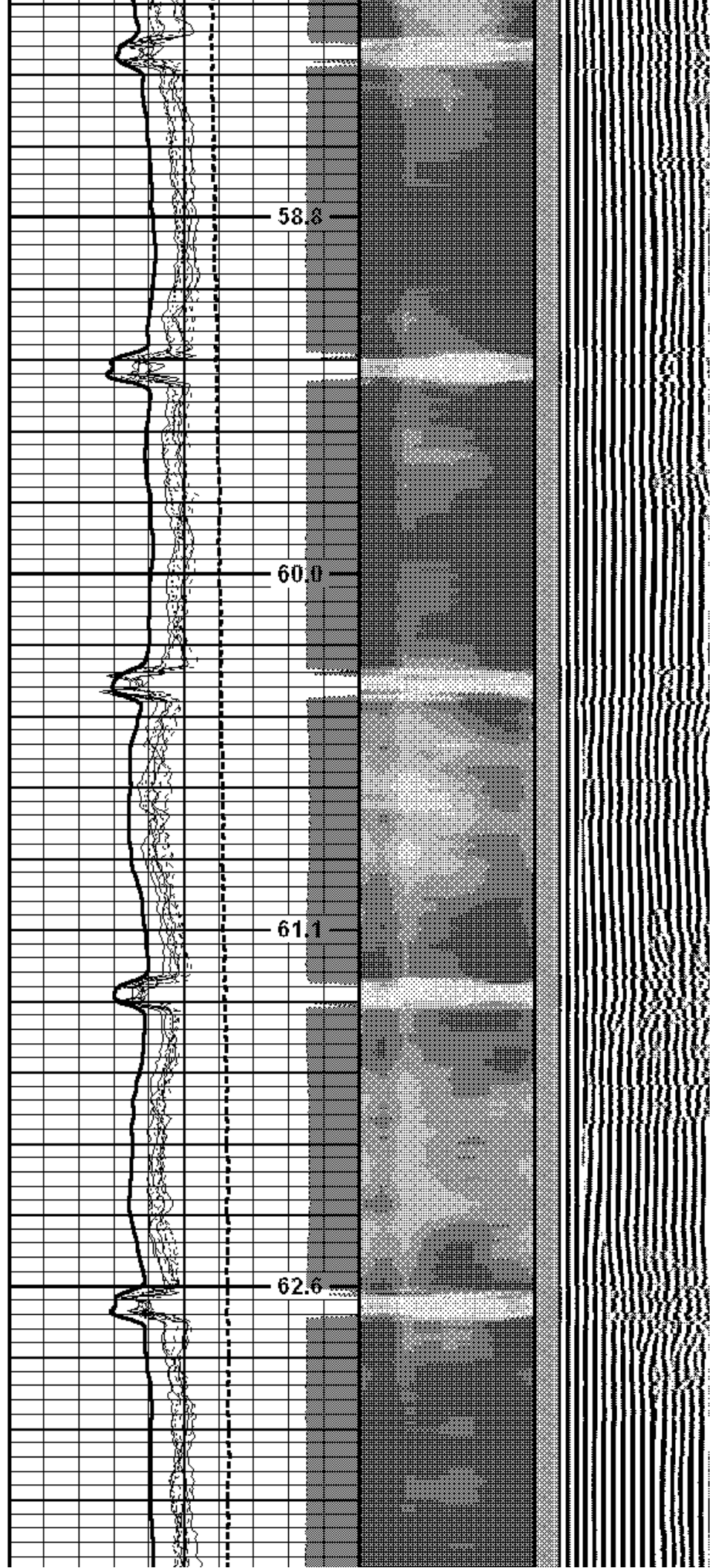
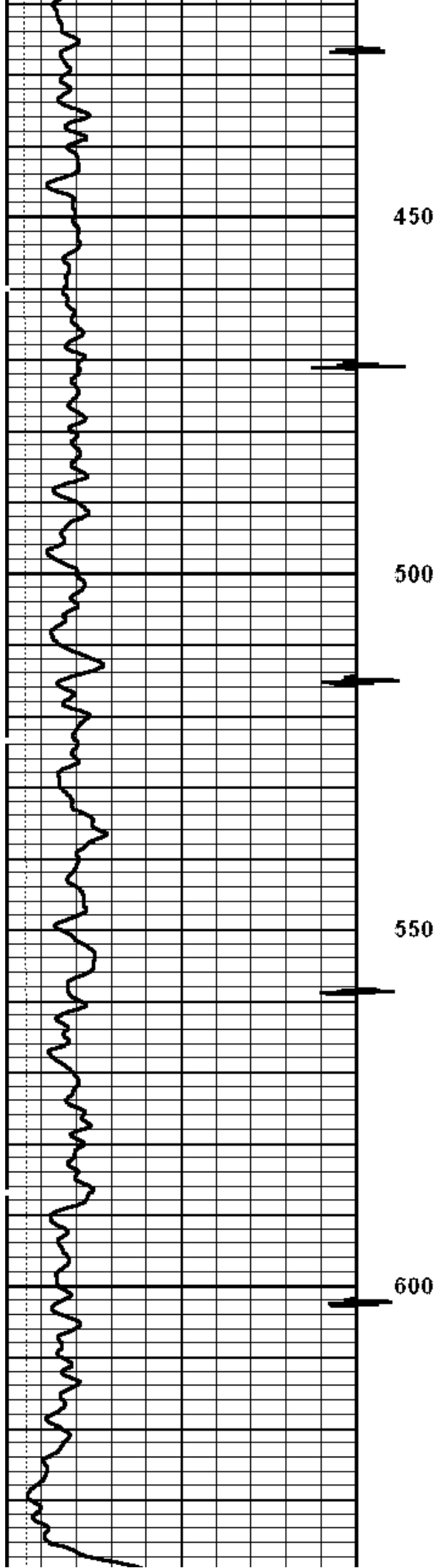
WE APPRECIATE YOUR BUSINESS, MESA WIRELINE LLC, GRAND JUNCTION CO. (970) 257-04

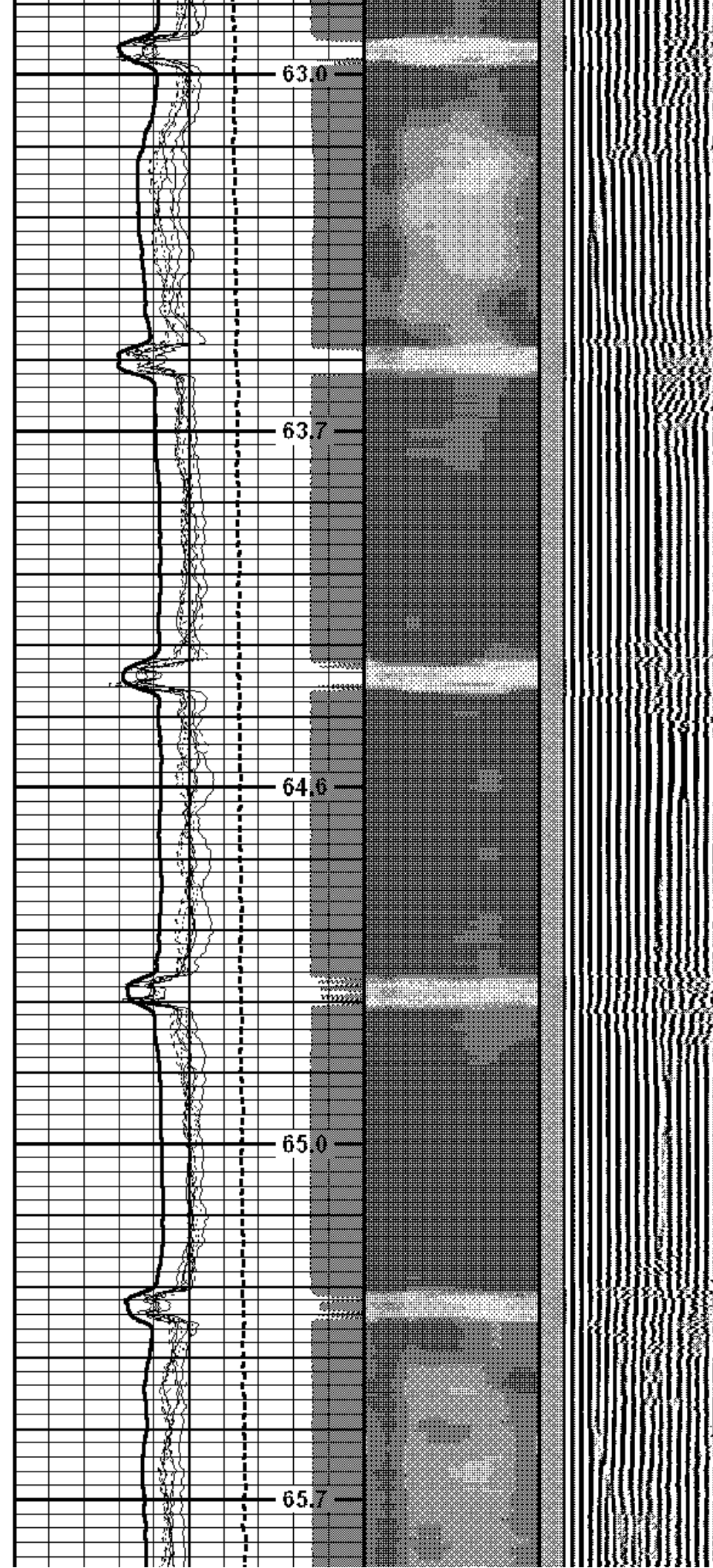
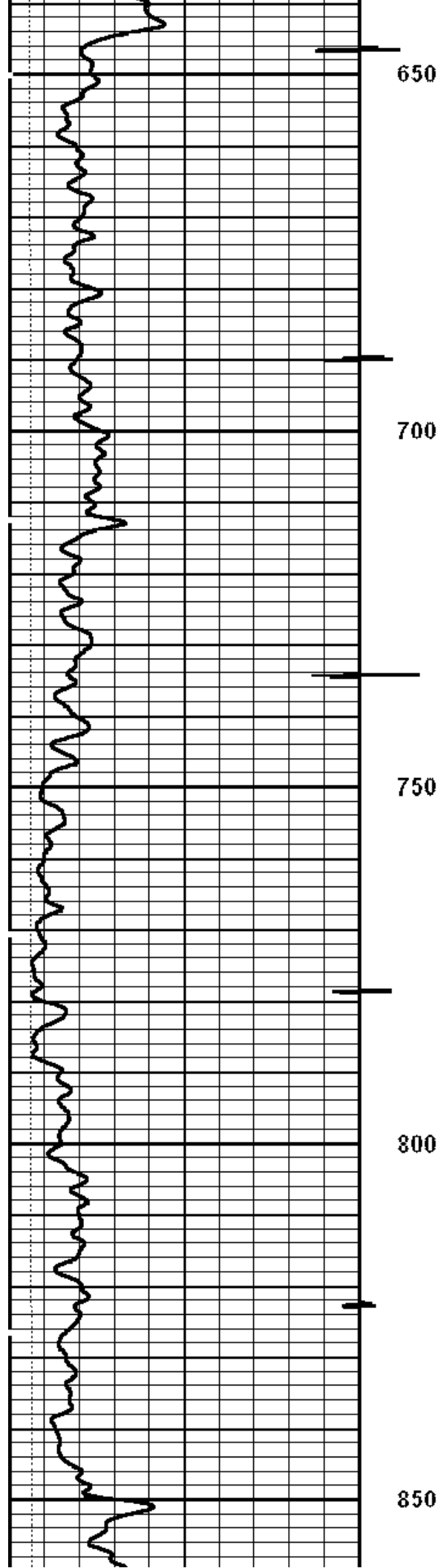
Database File: 9102.db
Dataset Pathname: pass4.2
Presentation Format: rbtfinal
Dataset Creation: Sat Nov 12 12:50:13 2011 by Calc Std Casedhole 08121

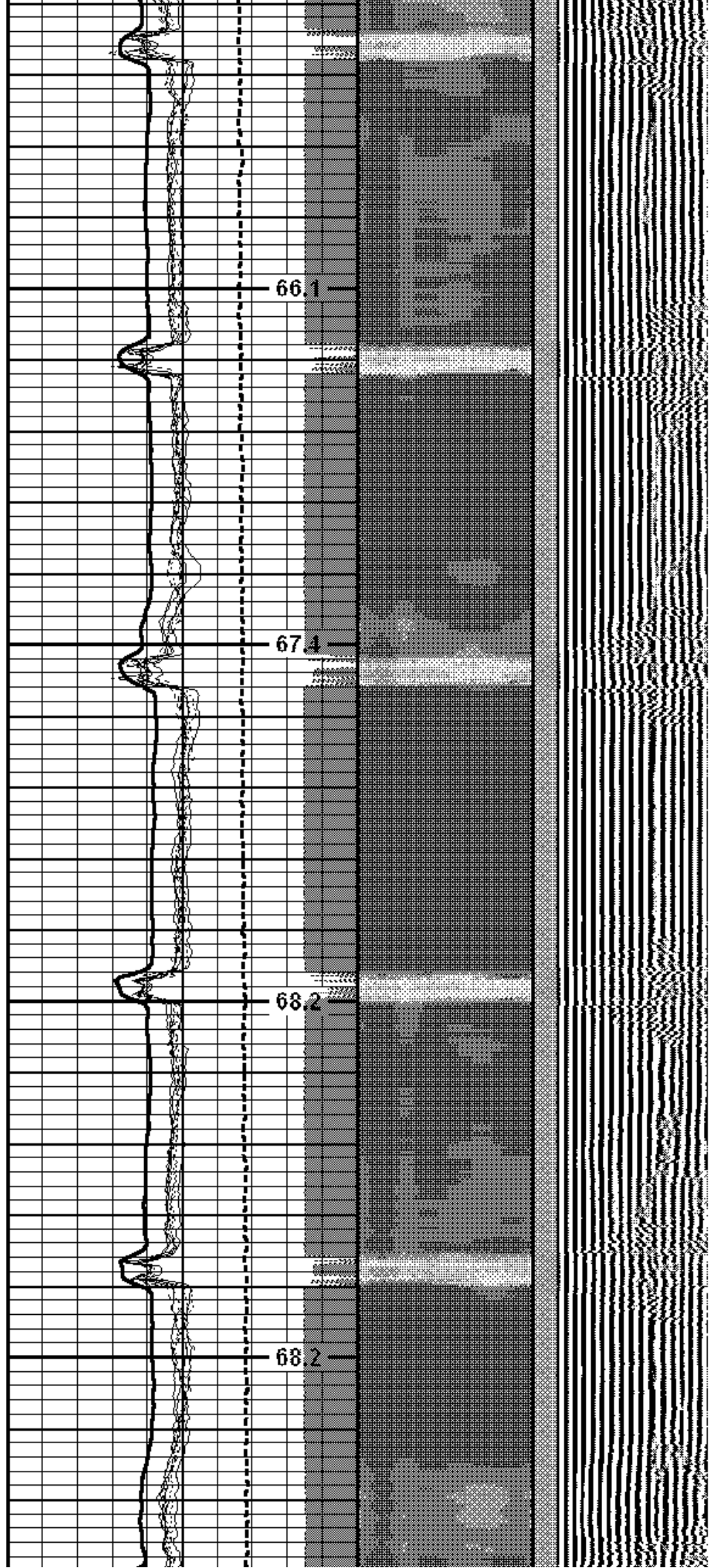
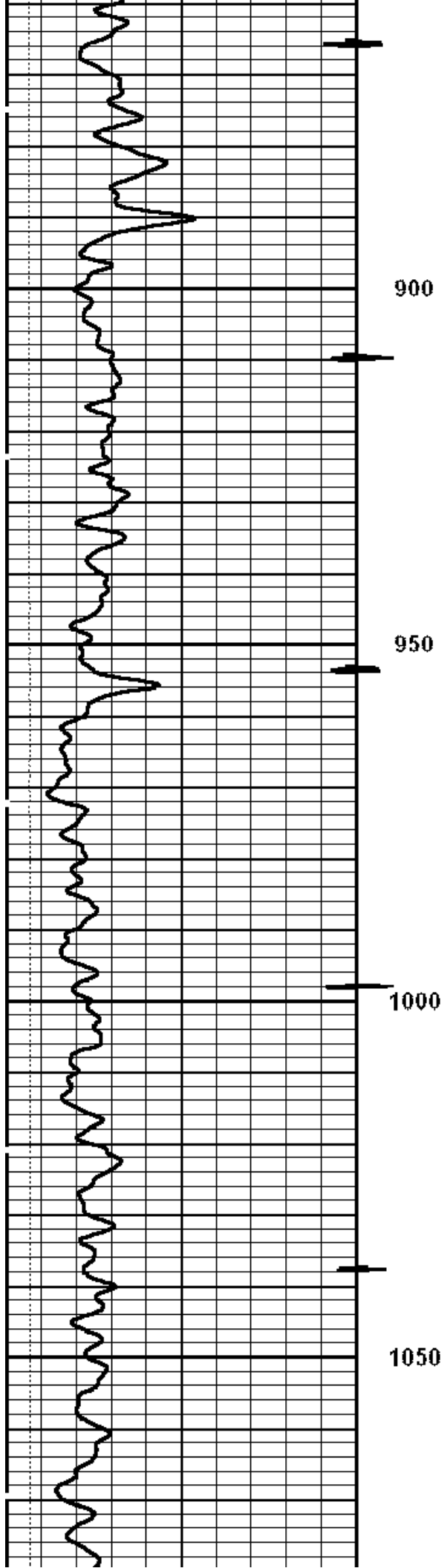
Charted by:		Depth in Feet scaled 1:240					
0	GR (GAPI)	200	0	Amplitude (mV)	100	1 SECTORS 8	variable Density
0	LTEN (lb)	5000	0	temp (degF)	100	0	70 200 1200
		CCL	0	TT3FT (usec)	250		
				TEMP			
				(degF)			











SHORT JOINT

1100

68.8

1150

69.4

1200

69.3

1250

70.7

1300

71.1

