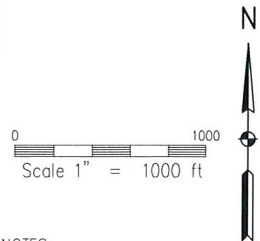
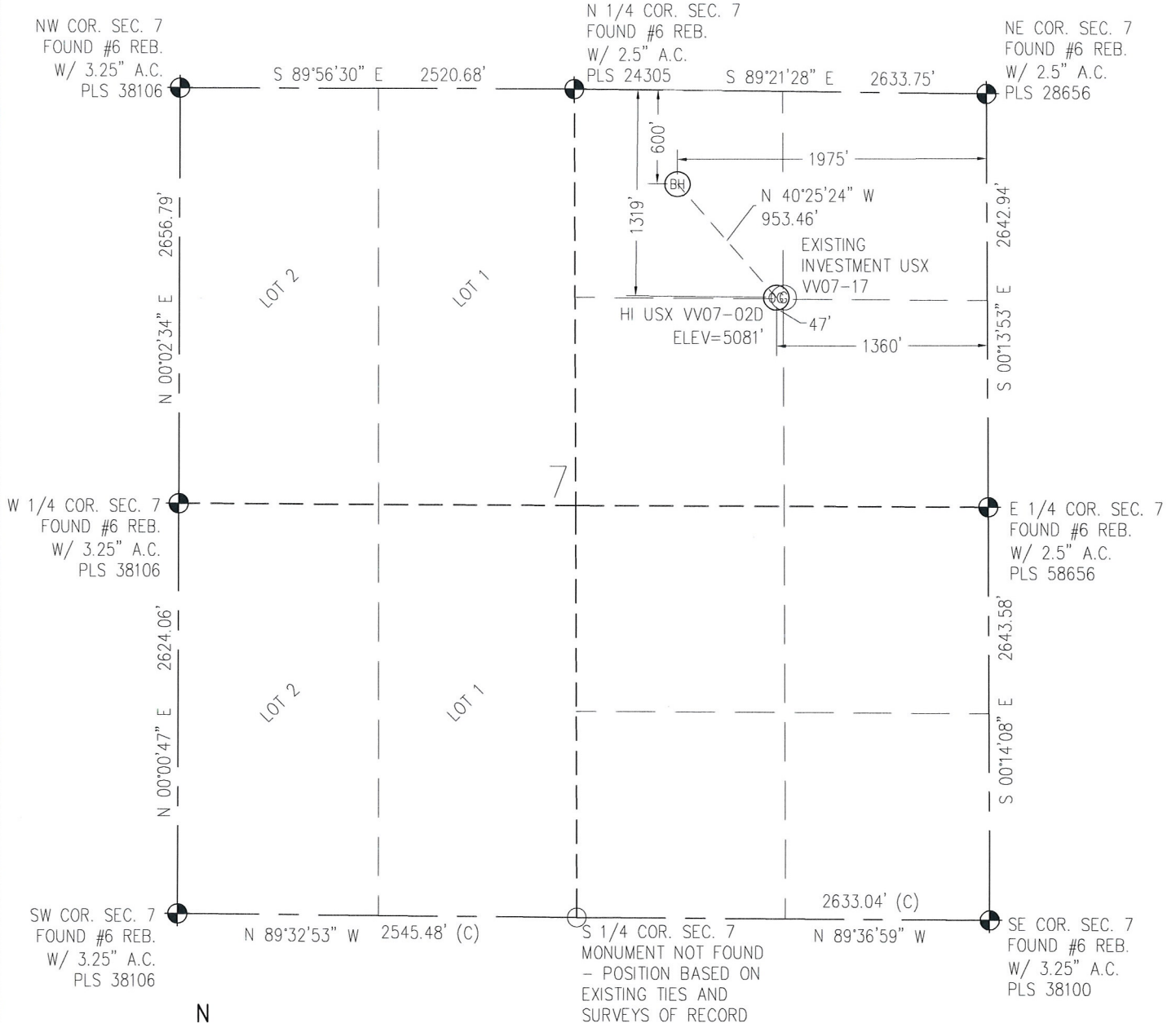


WELL LOCATION CERTIFICATE

THIS MAP DOES NOT REPRESENT A BOUNDARY SURVEY



IN ACCORDANCE WITH A REQUEST FROM MATTHEW CAMPBELL - NOBLE ENERGY, BASELINE ENGINEERING CORP. HAS DETERMINED THE LOCATION OF THE HI USX VV07-02D TO BE 1,319' FNL AND 1,360' FEL, AS MEASURED AT NINETY (90) DEGREES FROM THE SECTION LINE OF SECTION 7, TOWNSHIP 1 NORTH, RANGE 67 WEST AND THE BOTTOM HOLE LOCATION TO BE 600' FNL AND 1,975' FEL OF SECTION 7, TOWNSHIP 1 NORTH, RANGE 67 WEST, 6TH PRINCIPAL MERIDIAN, WELD COUNTY, COLORADO.

I HEREBY CERTIFY THAT THIS WELL LOCATION CERTIFICATE WAS PREPARED BY ME, OR UNDER MY DIRECT SUPERVISION, THAT THE FIELD WORK WAS COMPLETED ON 9/1/2011, FOR AND ON BEHALF OF NOBLE ENERGY INC. THAT IT IS NOT A LAND SURVEY PLAT OR AN IMPROVEMENT SURVEY PLAT, AND THAT IT IS NOT TO BE RELIED UPON FOR ESTABLISHMENT OF FENCE, BUILDING, OR OTHER FUTURE IMPROVEMENT LINES.

NOTES:

- 1) LAT/LONG SHOWN ARE BASED ON A GPS OBSERVATION (NAD83).
- 2) BEARINGS SHOWN ARE GRID BEARINGS OF THE COLORADO STATE PLANE COORDINATE SYSTEM, NORTH ZONE, NORTH AMERICAN DATUM 1983/2007.
- 3) GROUND ELEVATIONS ARE BASED ON A GPS OBSERVATION (NAVD 88 DATUM).
- 4) ALL DISTANCES SHOWN ARE FIELD MEASURED UNLESS OTHERWISE NOTED.
- 5) THE NEAREST EXISTING WELL IS: INVESTMENT USX VV07-17 47' EAST.
- 6) IMPROVEMENTS: SEE LOCATION DRAWING EXHIBIT FOR ALL VISIBLE IMPROVEMENTS WITHIN 400' OF THE EDGE OF DISTURBED AREA.
- 7) SURFACE USE: HAY FIELD.
- 8) INSTRUMENT OPERATOR: BRETT BIRCH

NOTICE: According to Colorado law you MUST commence any legal action based upon any defect in this W.L.C. within three years after you first discover such defect. In no event may any action based upon any defect in this W.L.C. be commenced more than ten years from this said date of the certification show hereon.

SURFACE HOLE:
LATITUDE: 40.069351° N
LONGITUDE: 104.928772° W
ELEV: 5081'
PDOP: 1.4
1/4, 1/4: NW1/4NE1/4
NEAREST PROPERTY LINE: 1,319' N

BOTTOM HOLE:
LATITUDE: 40.071354° N
LONGITUDE: 104.930964° W

LEGEND

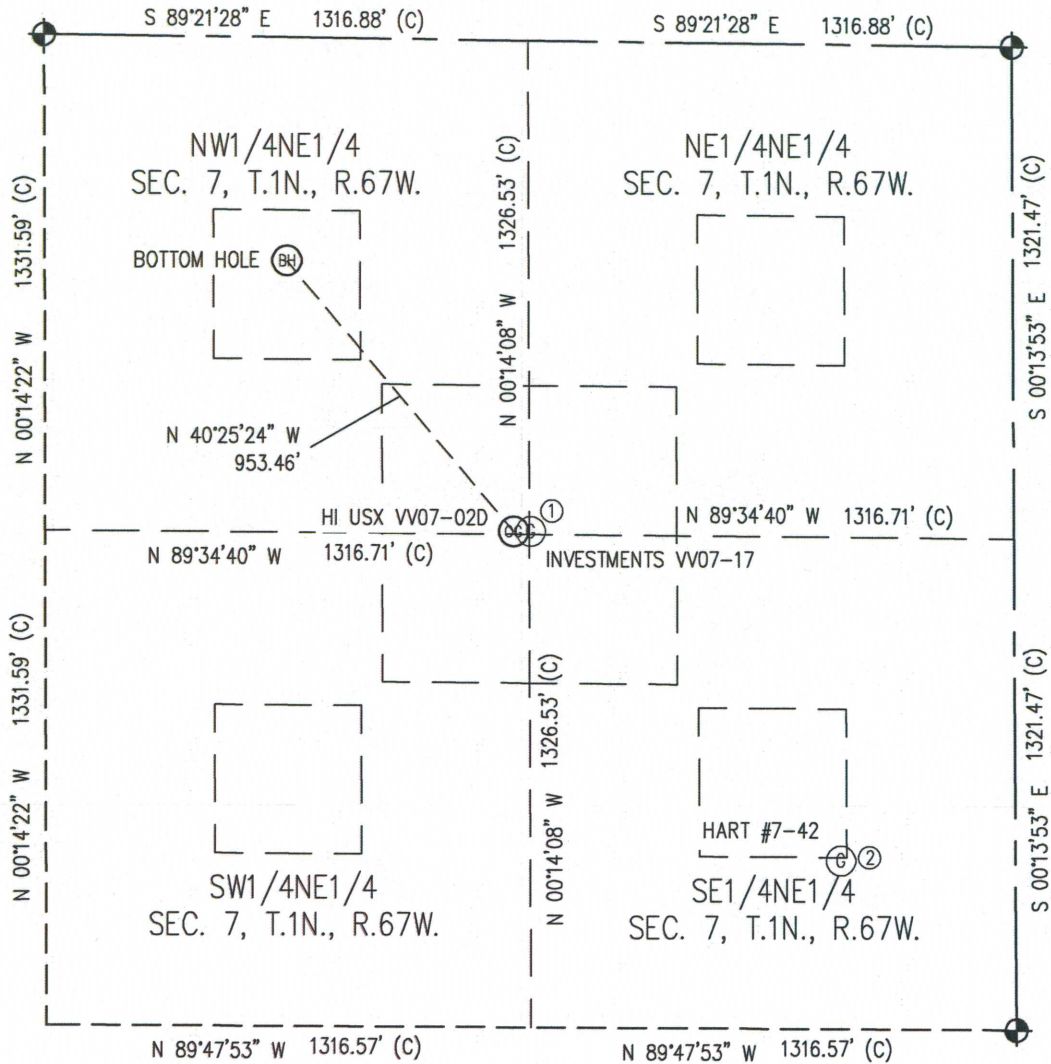
- - FOUND/SET SURVEY MONUMENT PER MONUMENT RECORD EXCEPTIONS NOTED.
- - CALCULATED SURVEY MONUMENT POSITION
- (C) - CALCULATED DIMENSION



Steven A. Lund
Professional Land Surveyor Registration 34995 Completed 9/6/2011
State of Colorado
FOR AND ON BEHALF OF BASELINE ENGINEERING CORP.

SITE SKETCH

HI USX WV07-02D

SECTION 7
TOWNSHIP 1 NORTH
RANGE 67 WEST

①

INVESTMENT USX WV07-17
NE 1/4 NE 1/4
1,318' FNL
1,313' FEL
LATITUDE: 40.069350° N
LONGITUDE: 104.928604° W
PDOP: 2.0
EL=5082'

②

HART #7-42
SE 1/4 NE 1/4
2,193' FNL
474' FEL
LATITUDE: 40.066908° N
LONGITUDE: 104.925617° W
PDOP: 1.3
EL=5061'

NOTES:

- 1) THIS SKETCH DOES NOT REPRESENT A BOUNDARY SURVEY.
- 2) THE DATUM FOR THE LATITUDES AND LONGITUDES ON THIS SKETCH IS NAD83.

