

Erin Bibeau

Regulatory Compliance Representative
DJ Basin



4557 Denrose Ct.
Ft. Collins, CO 80524
Telephone 970.419.7816 Mobile 970.219.8703
Fax 970.493.9219
ebibeau@marathonoil.com

February 21, 2012

David Bauer
Weld County
1111 H Street
Greeley, CO 80632

Re: 30 Day Notice Requirement (Rule 305)
Advance Notice of Drilling Operations

Crow Valley 7-62-22-2H Well
SESW Section 22, Township 7N, Range 62W
320' FSL and 1911' FWL
Weld County, Colorado

Dear Mr. Bauer:

Marathon Oil Company ("Marathon") is filing an Application for Permit to Drill with the Colorado Oil and Gas Conservation Commission for the above referenced well.

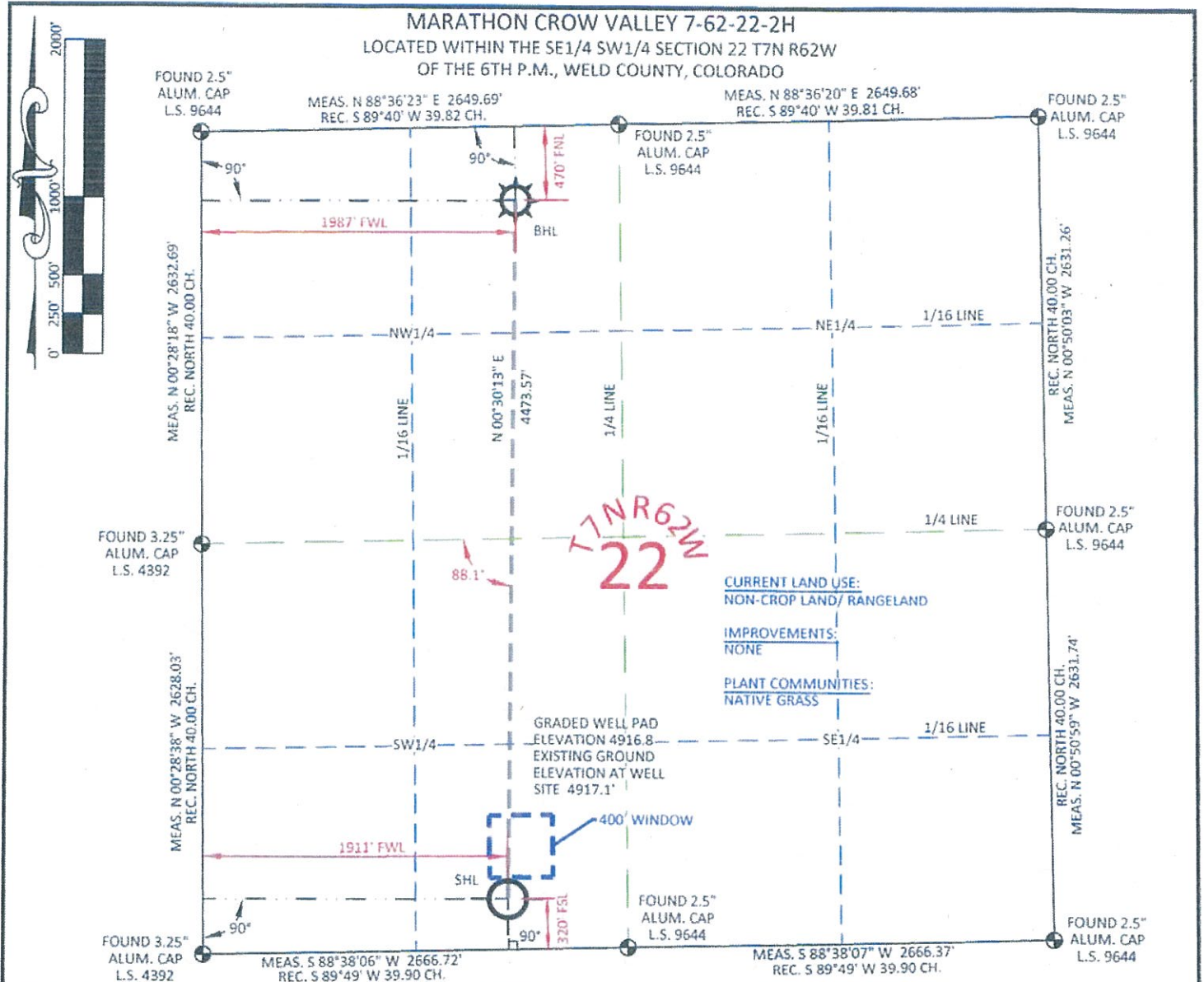
The enclosed notification, pursuant to Rule 305, is required as part of the filing process. Please contact Greg Ralston, Marathon Land Representative, at 713-296-2409 if you have any questions.

Sincerely,

A handwritten signature in blue ink, appearing to read 'C.K. Bibeau', with a long horizontal flourish extending to the right.

Erin Bibeau
Regulatory Compliance Rep.

Enclosures: Well Location Plat
Pad & Road Location Plats



SURFACE HOLE LOCATION			BOTTOM HOLE LOCATION		
STATE PLANE CO. NORTH WAD 27 NAD 83 DEC. DEG.	LAT.	40.553272°	GEOGRAPHIC DEC. DEG.	LAT.	40.565549°
	LONG.	104.310667°		LONG.	104.310310°
	LAT.	40.553290°		LAT.	40.565566°
	LONG.	104.310161°		LONG.	104.309804°
	LAT.	40°33'11.78"		LAT.	40°33'55.98"
	LONG.	104°18'38.40"		LONG.	104°18'37.12"
	LAT.	40°33'11.84"		LAT.	40°33'56.04"
	LONG.	104°18'36.58"		LONG.	104°18'35.29"
	NORTH	1446614.37		NORTH	1451087.77
	EAST	3330482.63		EAST	3330521.95
NORTH	446614.66	NORTH	451087.97		
	EAST		2330632.04	EAST	2330671.32
FOOTAGE: 1911' FWL - 320' FSL			FOOTAGE: 1987' FWL - 470' FNL		
MEASURE DATE		INSTRUMENT OPERATOR	PDOP	SHL GRND ELEV.	
01/27/2012		ALLEN BLATTEL	1.6	4917.1	
CONFIDENTIALITY NOTES:					
The information contained in this plat is legally privileged and confidential information intended only for the use of the recipients. If you are not the intended recipients, you are hereby notified that any use, dissemination, distribution or copying of this information is strictly prohibited.					

I, Rodney A. Walters, Professional Land Surveyor, CO. PLS # 16847 hereby certify that (in accordance with a request from Erin Bibeau with Marathon Oil Co, 5555 San Felipe, Houston, TX 77056) I and/or personnel under my direction made a survey on the 27th day of January 2012, for the Surface Hole Location and Elevation of Marathon Oil Co. CROW VALLEY 7-62-22-2H being located the SE 1/4 of the SW 1/4, Section 22, T7N, R62W and the Bottom Hole Location being located in the NE1/4 of the NW1/4 of Section 22, T7N, R62W, both being of the 6th P.M., Weld County, State of Colorado.

- All bearings and distances are GRID, based on the Colorado State Plane Coordinate System, North Zone, North American Datum 1983 from GPS observations occupying a WHS control point (5/8"rebar) and having the Location and Elevation derived from an Opus Solution.
- Vertical Datum used is of NAVD 88.
- Record Bearings and Distances as shown are based on the General Land Office Survey plat approved on the 16th day of December 1872.

COLORADO LICENSE
RODNEY A. WALTERS
16847
2-02-12
PROFESSIONAL LAND SURVEYOR

~SEAL~

WILLIAM H. SMITH & ASSOCIATES P.C.
SURVEYING CONSULTANTS
350 EAST SECOND NORTH
GREEN RIVER, WY 82501
PHONE: 307-875-3638
307-875-3639
www.whsmithpc.com

LEGEND

- FOUND OR SET CORNER
- ⊗ CALCULATED CORNER
- NOTHING FOUND

LOCATION:
CROW VALLEY 7-62-22-2H
WITHIN THE SE1/4 SW1/4
SECTION 22,
T 7 N, R 62 W,
6TH PM.
WELD COUNTY,
COLORADO

MARATHON OIL COMPANY
PO BOX 3128, HOUSTON TX, 77253
5555 SAN FELIPE, HOUSTON TX, 77056

WELL LOCATION PLAT

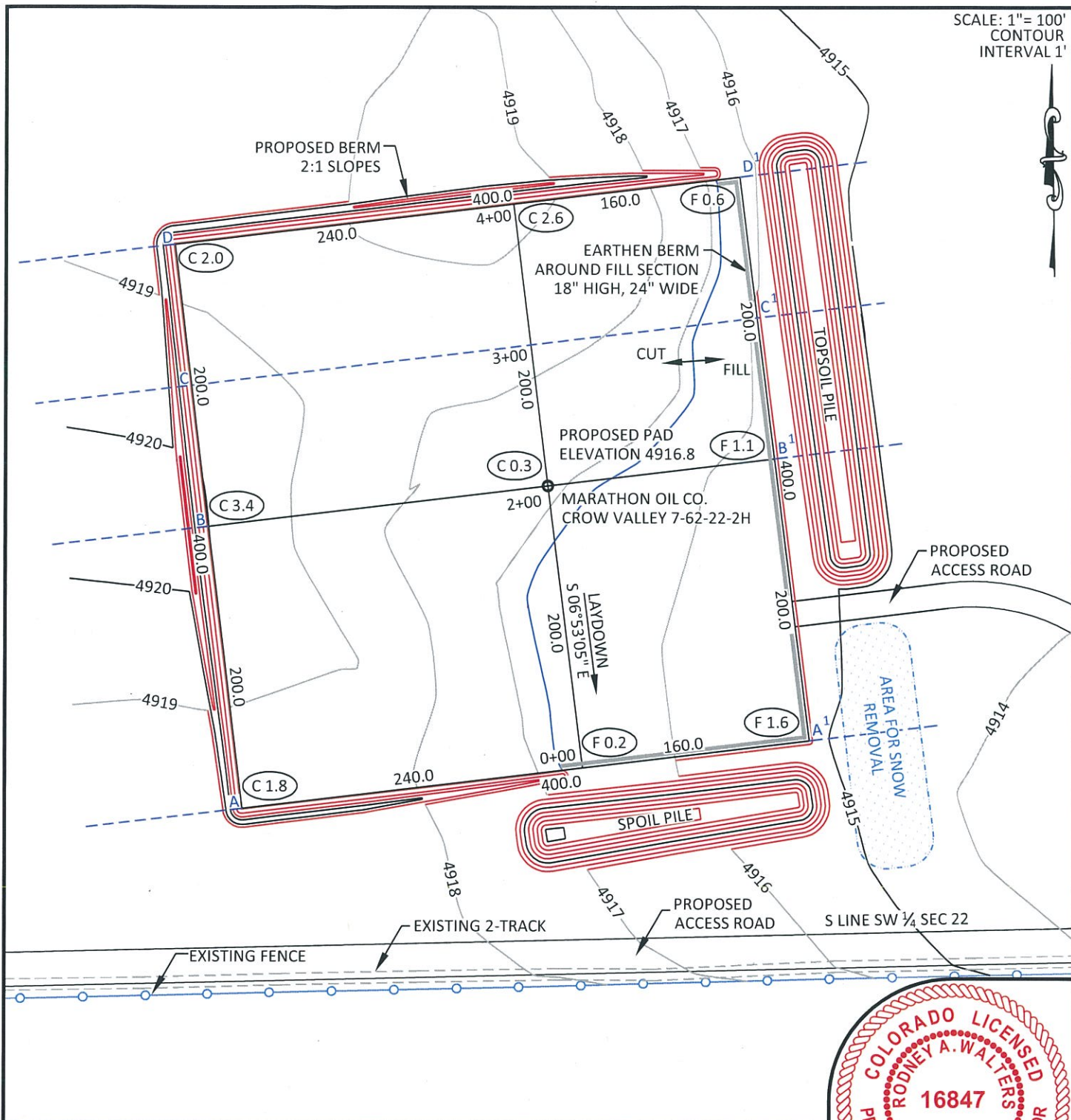
SCALE: 1"=1000'

DATE: 02/02/2012

EXHIBIT "A"

SHEET 1 OF 1

SCALE: 1"= 100'
CONTOUR
INTERVAL 1'



NOTES:

- Elevation of pad shown on plans are to constructed pad without final gravel padding placement. Depth, volume, and padding material to be determined by operator.
- The information contained in this plat is legally privileged and confidential information intended only for the use of the recipients. If you are not the intended recipients, you are hereby notified that any use, dissemination, distribution or copying of this information is strictly prohibited.



**WILLIAM H. SMITH
& ASSOCIATES P.C.**

SURVEYING CONSULTANTS
550 EAST SECOND NORTH PHONE: 307-875-3638
GREEN RIVER, WY 307-875-3639
www.whsmithpc.com

CONSTRUCTION DATA

CUT SLOPE	3:1
FILL SLOPE	3:1
TOTAL CUT	7,983 CU. YDS.
TOTAL FILL	2,775 CU. YDS.
TOP SOIL AT 6"	3,289 CU. YDS.
SPOIL	1,919 CU. YDS.
DISTURBED AREA	177,612 SQ. FT.
DISTURBED AREA	4.08 ACRES

LOCATION:

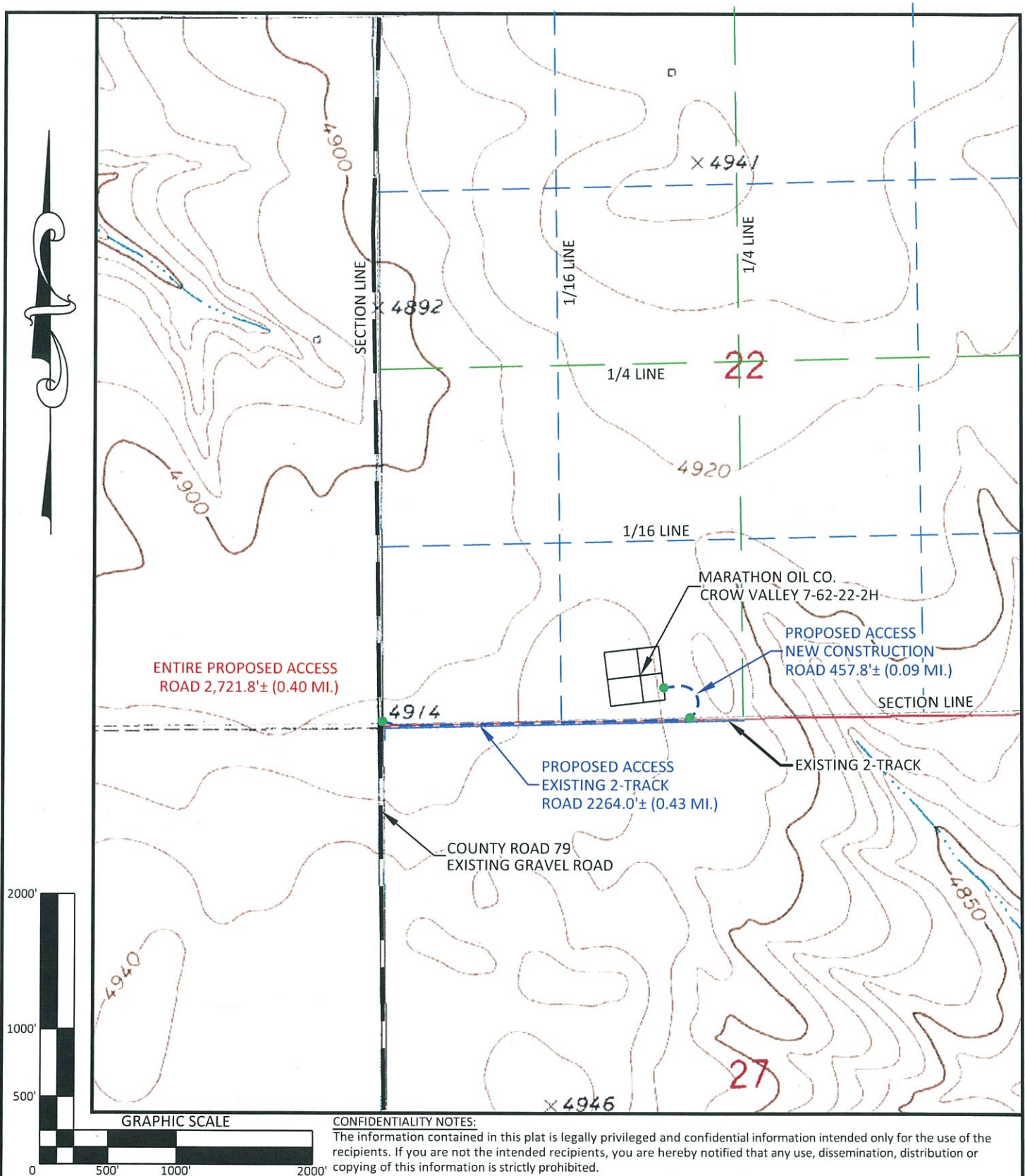
CROW VALLEY
7-62-22-2H
WITHIN THE SE/4
SW/4, SECTION 22,
T 7 N, R 62 W,
6TH PM.
WELD COUNTY,
COLORADO

MARATHON OIL COMPANY

PO BOX 3128, HOUSTON TX, 77253
5555 SAN FELIPE, HOUSTON TX, 77056

CONSTRUCTION LAYOUT

320' FSL	1911' FWL
SCALE: 1"=100'	EXHIBIT "I"
DATE: 01/30/2012	SHEET 8 OF 14



CONFIDENTIALITY NOTES:

The information contained in this plat is legally privileged and confidential information intended only for the use of the recipients. If you are not the intended recipients, you are hereby notified that any use, dissemination, distribution or copying of this information is strictly prohibited.



**WILLIAM H. SMITH
& ASSOCIATES P.C.**

SURVEYING CONSULTANTS

550 EAST SECOND NORTH PHONE: 307-875-3638
GREEN RIVER, WY 307-875-3639
www.whsmithpc.com

DRAWN BY: LAL/BW

CHECKED BY: RAW

PROJECT NO: 762222H

JOB NO: 2011001

REVISIONS:

LEGEND

PROPOSED ACCESS	---
EXISTING 2-TRACK	---
EXISTING ROAD	---
1/16TH LINE	---
1/4 LINE	---
SECTION LINE	---

LOCATION:

CROW VALLEY
7-62-22-2H
WITHIN THE SE/4
SW/4, SECTION 22,
T 7 N, R 62 W,
6TH PM.
WELD COUNTY,
COLORADO

MARATHON OIL COMPANY
PO BOX 3128, HOUSTON TX, 77253
5555 SAN FELIPE, HOUSTON TX, 77056

ACCESS ROAD MAP

SCALE: 1"=1000'

EXHIBIT "E"

DATE: 01/30/2012

SHEET 4 OF 14



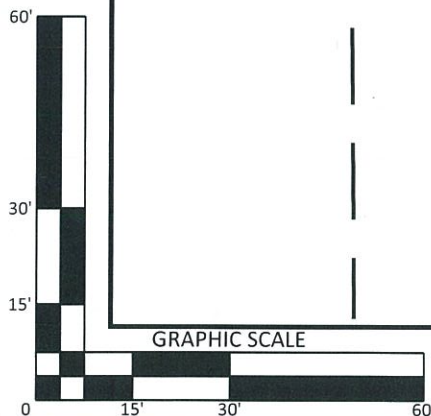
SECTION LINE

SECTION LINE

COUNTY ROAD 79

PROPOSED ACCESS ROAD

EXISTING FENCE



CONFIDENTIALITY NOTES:

The information contained in this plat is legally privileged and confidential information intended only for the use of the recipients. If you are not the intended recipients, you are hereby notified that any use, dissemination, distribution or copying of this information is strictly prohibited.



**WILLIAM H. SMITH
& ASSOCIATES P.C.**

SURVEYING CONSULTANTS
550 EAST SECOND NORTH PHONE: 307-875-3638
GREEN RIVER, WY 307-875-3639
www.whsmithpc.com

DRAWN BY: LAL/BW

CHECKED BY: RAW

PROJECT NO: 762222H

JOB NO: 2011001

REVISIONS:

LEGEND

ACCESS ROAD

EXISTING ROAD

SECTION LINE

EXISTING FENCE

LOCATION:

CROW VALLEY
7-62-22-2H
WITHIN THE SE/4
SW/4, SECTION 22,
T 7 N, R 62 W,
6TH PM.
WELD COUNTY,
COLORADO

MARATHON OIL COMPANY
PO BOX 3128, HOUSTON TX, 77253
5555 SAN FELIPE, HOUSTON TX, 77056

ACCESS ROAD ENTRANCE

SCALE: 1"=30'

EXHIBIT "A"

DATE: 01/30/2012

SHEET 1 OF 1