

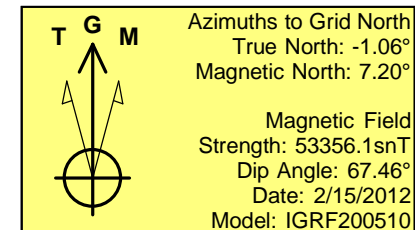
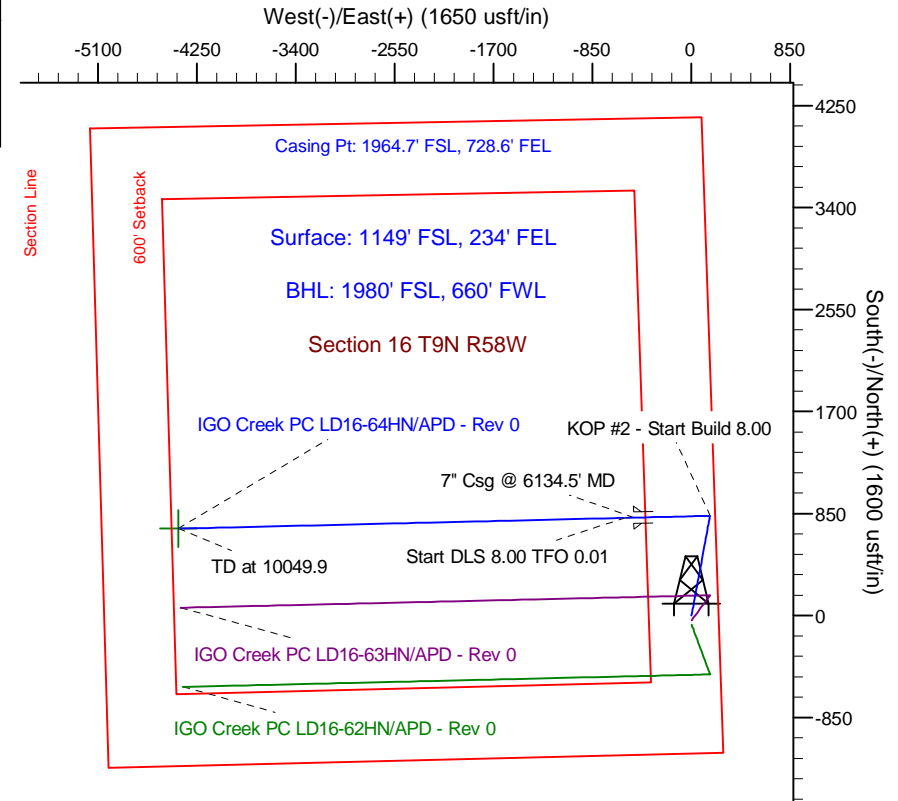
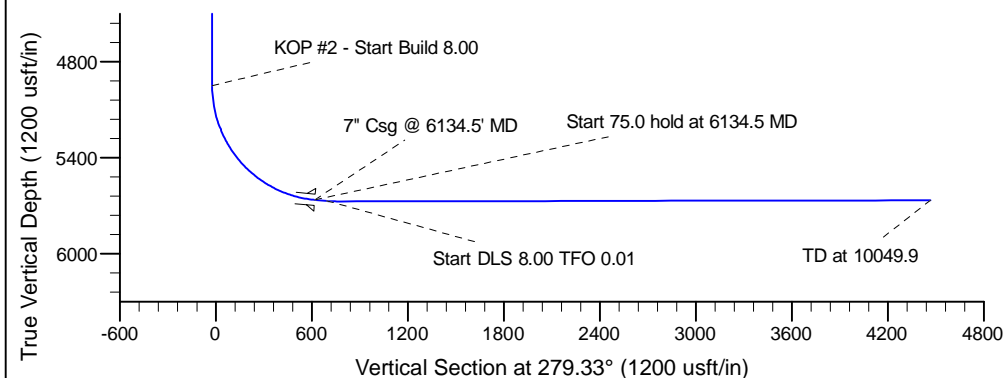
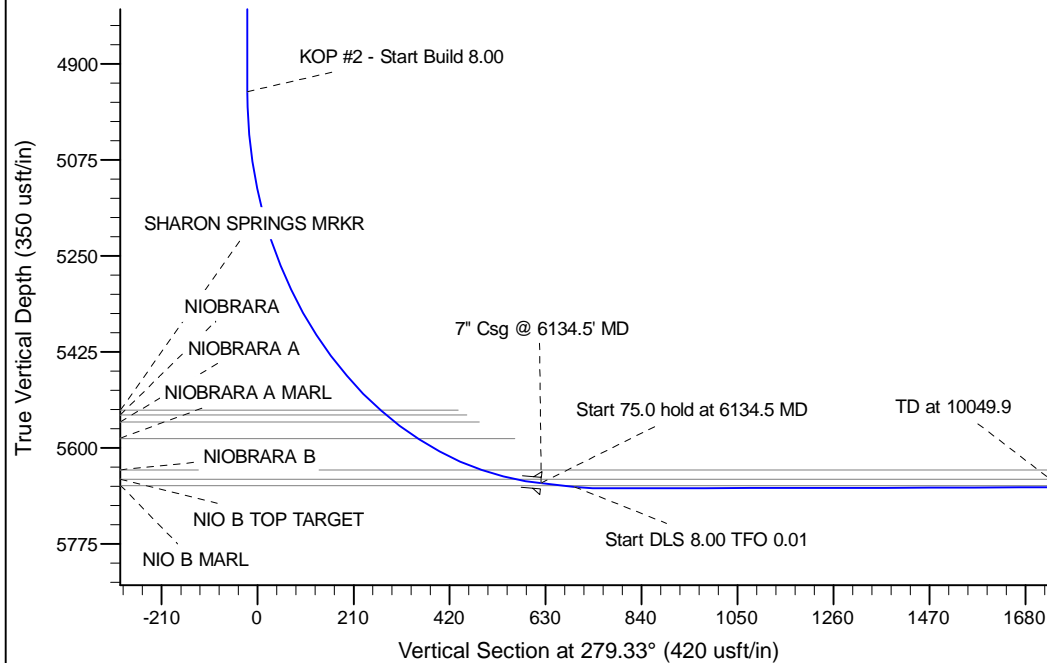
Project: Wattenberg Field
 Site: LD (Sec.16-T09N-R58W) Weld County, CO
 Well: IGO Creek PC LD16-64HN
 Wellbore: Original Drilling
 Design: APD - Rev 0

Northern Region Drilling

Geodetic System: US State Plane 1983
 Datum: North American Datum 1983
 Ellipsoid: GRS 1980
 Zone: Colorado Northern Zone
 System Datum: Mean Sea Level

SECTION DETAILS

Sec	MD	Inc	Azi	TVD	+N/-S	+E/-W	Dleg	TFace	VSect	Target
1	0.0	0.00	0.00	0.0	0.0	0.0	0.00	0.00	0.0	
2	1200.0	0.00	0.00	1200.0	0.0	0.0	0.00	0.00	0.0	
3	1913.0	17.83	10.83	1901.6	108.1	20.7	2.50	10.83	-2.9	
4	3958.0	17.83	10.83	3848.4	722.9	138.3	0.00	0.00	-19.3	
5	4671.1	0.00	0.00	4550.0	831.0	159.0	2.50	180.00	-22.2	
6	5072.0	0.00	0.00	4950.9	831.0	159.0	0.00	0.00	-22.2	
7	6134.5	85.00	268.66	5664.4	815.7	-494.6	8.00	268.66	620.3	
8	6209.5	85.00	268.66	5670.9	814.0	-569.3	0.00	0.00	693.7	
9	6273.3	90.10	268.66	5673.7	812.5	-633.0	8.00	0.01	756.3	
10	10049.9	90.10	268.66	5667.0	724.2	-4408.6	0.00	0.00	4467.7	



WELL DETAILS: IGO Creek PC LD16-64HN			
Ground Level: 4703.0			
Northing	Easting	Latitude	Longitude
1519245.90	3454267.12	40° 44' 49.884 N	103° 51' 37.620 W
Plan: APD - Rev 0 (IGO Creek PC LD16-64HN/Original Drilling)			
Created By: Carrie Willers		Date: 10:33, February 16 2012	
OK to submit with 2A as per Noble Drilling 2/16/2012 14:57			