

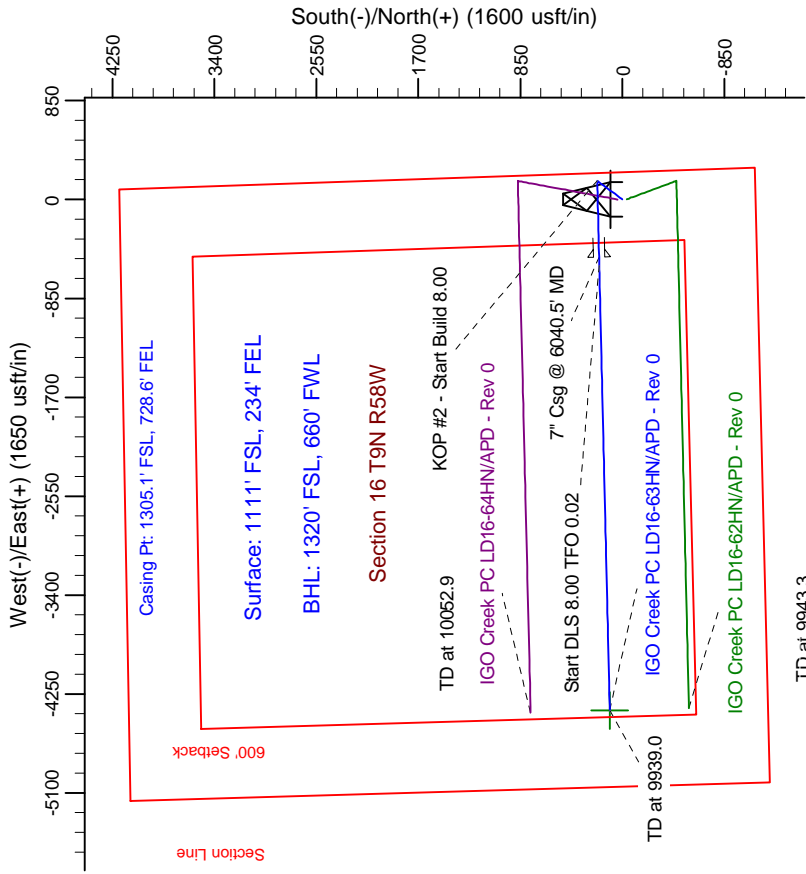
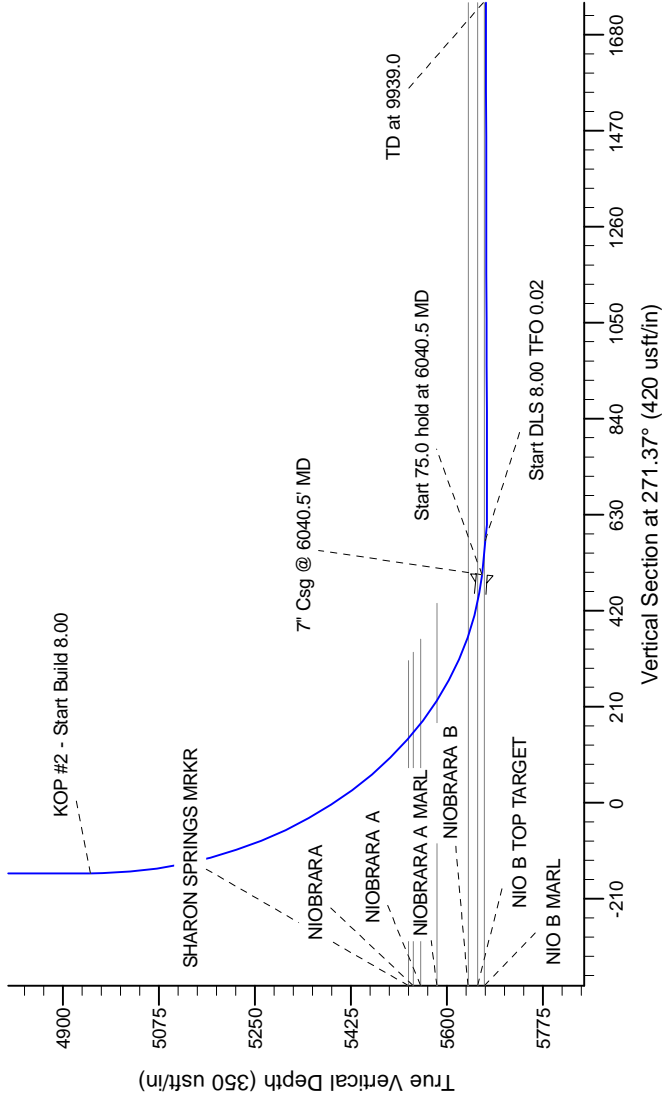
Northern Region Drilling

Project: Wattenberg Field  
Site: LD (Sec.16-T09N-R58W) Weld County, CO  
Well: IGO Creek PC LD16-63HN  
Wellbore: Original Drilling  
Design: APD - Rev 0

Geodetic System: US State Plane 1983  
Datum: North American Datum 1983  
Ellipsoid: GRS 1980  
Zone: Colorado Northern Zone  
System Datum: Mean Sea Level

SECTION DETAILS

Sec	MD	Inc	Azi	TVD	+N/-S	+E/-W	Dleg	TFace	VSect	Target
1	0.0	0.00	0.00	0.0	0.0	0.0	0.00	0.00	0.0	
2	2500.0	0.00	0.00	2500.0	0.0	0.0	0.00	0.00	0.0	
3	3097.9	14.95	37.26	3091.1	61.7	46.9	2.50	37.26	-45.5	
4	3514.8	14.95	37.26	3493.9	147.3	112.1	0.00	0.00	-108.5	
5	4112.6	0.00	0.00	4085.0	209.0	159.0	2.50	180.00	-154.0	
6	4978.0	0.00	0.00	4950.4	209.0	159.0	0.00	0.00	-154.0	
7	6040.5	85.00	268.69	5663.9	194.1	-494.6	8.00	268.69	499.1	
8	6115.5	85.00	268.69	5670.4	192.3	-569.3	0.00	0.00	573.7	
9	6179.3	90.10	268.69	5673.1	190.9	-633.0	8.00	0.02	637.3	
10	9939.0	90.10	268.69	5666.5	105.0	-4391.7	0.00	0.00	4393.0	



T

G

M

Azimuths to Grid North  
True North: -1.06°  
Magnetic North: 7.20°

Magnetic Field  
Strength: 53356.1snT  
Dip Angle: 67.46°  
Date: 2/15/2012  
Model: IGRF200510

WELL DETAILS: IGO Creek PC LD16-63HN

Ground Level: 4702.0

Northing: 1519205.82

Easting: 3454267.86

Latitude: 40° 44' 49.488 N

Longitude: 103° 51' 37.620 W

Plan: APD - Rev 0 (IGO Creek PC LD16-63HN/Original Drilling)

Created By: Carrie Willers

Date: 17:53, February 15 2012

OK to submit with 2A as per Noble Drilling

2/16/2012 14:57