

HALLIBURTON

**CONTINENTAL RESOURCES INC
PO BOX 1032
ENID, Oklahoma**

Dunn 1-13 H

CYCLONE/12

Post Job Summary **Cement Surface Casing**

Prepared for: CHRIS HUBER
Date Prepared: 12/29/2011
Version: 1

Service Supervisor: SNYDER, JONATHAN

Submitted by: PLIENESS, RYAN

HALLIBURTON

HALLIBURTON

Wellbore Geometry

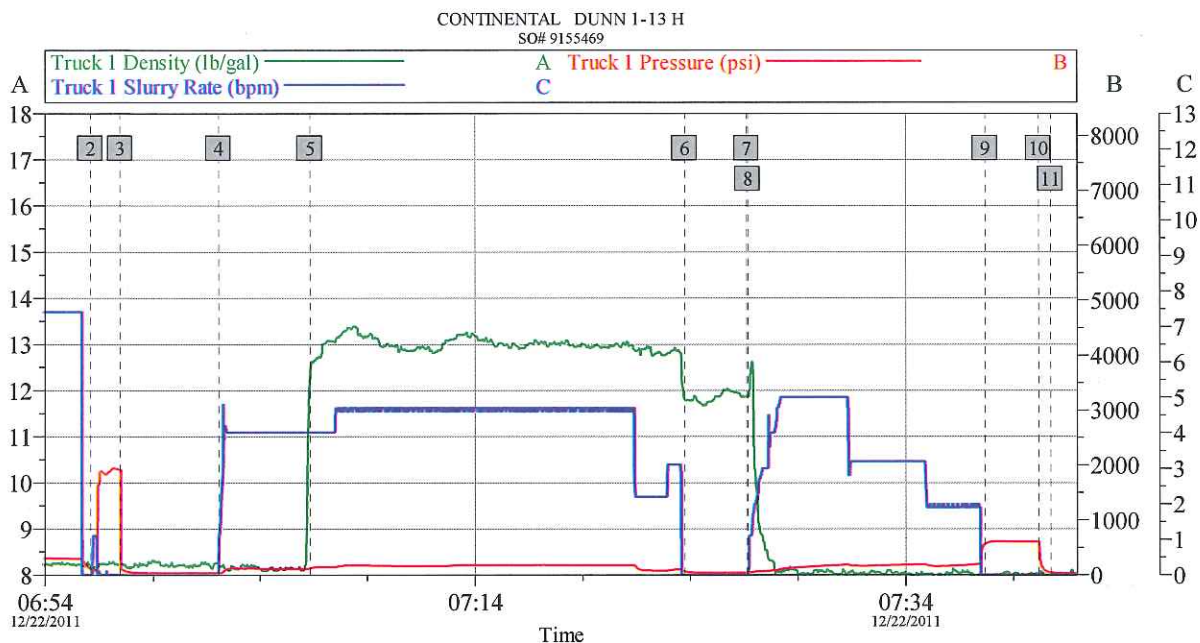
Job Tubulars					MD		TVD		Excess	Shoe Joint Length
Type	Description	Size in	ID in	Wt lbm/ft	Top ft	Bottom ft	Top ft	Bottom ft	%	ft
Casing	Surface Casing	9.63	8.921	36.00	0.00	525.00	0.00	0.00		0.00
Open Hole Section	Open Hole		13.500		0.00	525.00	0.00	0.00		

Pumping Schedule

Stage /Plug #	Fluid #	Fluid Type	Fluid Name	Surface Density lbm/gal	Avg Rate bbl/min	Surface Volume	Downhole Volume
1	1	Spacer	Water Spacer	8.34	4.00	15.0 bbl	15.0 bbl
1	2	Cement Slurry	Swiftcem B2 13.0#	13.00	5.00	225.0 sacks	225.0 sacks

HALLIBURTON

Data Acquisition



Global Event Log														
Intersection		TID	TIP	Intersection		TID	TIP	Intersection		TID	TIP			
2	Start Job	06:56:05	8.250	122.9	3	Test Lines	06:57:28	8.220	1917	4	Pump Spacer 1	07:02:03	8.251	26.00
5	Pump Cement	07:06:20	11.26	111.7	6	Shutdown	07:23:45	12.07	73.25	7	Drop Top Plug	07:26:37	11.87	38.00
8	Pump Displacement	07:26:41	11.88	38.00	9	Bump Plug	07:37:42	7.952	548.3	10	Other	07:40:11	8.031	603.0
11	End Job	07:40:46	8.000	47.55										

Customer:	CONTINENTAL	Job Date:	22-Dec-2011	Sales Order #:	9155469
Well Description:	DUNN 1-13 H	UWI:	05-123-34697		
SERVICE SUPERVISOR	JONATHAN SNYDER	SERVICE OPERATOR	JAMES WILEY		

OptiCem v6.4.9
22-Dec-11 09:03

HALLIBURTON

Service Supervisor Reports

Job Log

Date/Time	Chart #	Activity Code	Pump Rate	Cum Vol	Pump	Pressure (psig)	Comments
12/22/2011 00:30		Arrive at Location from Service Center					CONDUCTED A HAZARD HUNT AND FOUND NO VISIBLE HAZARDS
12/22/2011 04:30		Pre-Rig Up Safety Meeting					HELD A SAFETY MEETING PRIOR TO RIGGING UP THE EQUIPMENT AND DISCUSSED ALL POSSIBLE HAZARDS WHILE RIGGING UP EQUIPMENT.
12/22/2011 06:00		Pre-Job Safety Meeting					HELD SAFETY MEETING WITH ALL EMPLOYEES AND ALL THIRD PARTY PERSONEL PRIOR TO PUMPING THE CEMENT JOB.
12/22/2011 06:56		Start Job					
12/22/2011 06:57		Test Lines					PRESSURE TEST LINES TO 2000 PSI
12/22/2011 07:02		Pump Spacer 1	4	30		185.0	WATER SUPPLIED BY RIG
12/22/2011 07:06		Pump Cement	5	78		176.0	225 SKS SWIFTCM B2 MIXED @ 13 PPG W/ RIG WATER
12/22/2011 07:24		Shutdown					
12/22/2011 07:26		Drop Top Plug					PLUG PRELOADED, DROPPED THE PLUG AFTER SHUTDOWN PUMPING CEMENT.
12/22/2011 07:26		Pump Displacement	3	35		240.0	WATER SUPPLIED BY RIG
12/22/2011 07:37		Bump Plug				550.0	RIG CREW PUMPED WATER INTO THE PITS TO DILUTE OUR CEMENT SO WE DIDNT KNOW IF WE GOT CEMENT BACK TO SURFACE, COMPANY MAN SAID LEAVE IT AND IF HE HAD TOO THEN HE WOULD TOP IT OFF LATER
12/22/2011 07:40		Check Floats				604.0	FLOATS HELD, GOOD RETURNS THROUGHOUT THE JOB.
12/22/2011 07:40		End Job					

The Road to Excellence Starts with Safety

Sold To #:		Ship To #:		Quote #:		Sales Order #: 9155469	
Customer: CONTINENTAL RESOURCES INC				Customer Rep: HUBER, CHRIS			
Well Name: Dunn			Well #: 1-13 H		API/UWI #:		
Field: WATTENBERG		City (SAP):		County/Parish: Weld		State: Colorado	
Lat: N 40.668 deg. OR N 40 deg. 40 min. 5.347 secs.				Long: W 104.275 deg. OR W -105 deg. 43 min. 30.896 secs.			
Contractor: CYCLONE			Rig/Platform Name/Num: 12				
Job Purpose: Cement Surface Casing							
Well Type: Development Well				Job Type: Cement Surface Casing			
Sales Person: FLING, MATTHEW			Srv Supervisor: SNYDER, JONATHAN			MBU ID Emp #: 435616	

Job Personnel

HES Emp Name	Exp Hrs	Emp #	HES Emp Name	Exp Hrs	Emp #	HES Emp Name	Exp Hrs	Emp #
BRICKER, DANIEL Z		475710	SINCLAIR, RICHARD		368195	SNYDER, JONATHAN Leroy		435616
WILEY, JAMES A		440080						

Equipment

HES Unit #	Distance-1 way	HES Unit #	Distance-1 way	HES Unit #	Distance-1 way	HES Unit #	Distance-1 way
10547939	66 mile	10948695	66 mile	10977079C	66 mile	11362287C	66 mile
11562562	66 mile						

Job Hours

Date	On Location Hours	Operating Hours	Date	On Location Hours	Operating Hours	Date	On Location Hours	Operating Hours

TOTAL Total is the sum of each column separately

Job

Job Times

Formation Name	Formation Depth (MD)	Top	Bottom	Called Out	Date	Time	Time Zone
Form Type			BHST	On Location	22 - Dec - 2011	00:15	MST
Job depth MD	525. ft		Job Depth TVD	Job Started	22 - Dec - 2011	06:56	MST
Water Depth			Wk Ht Above Floor	Job Completed	22 - Dec - 2011	07:40	MST
Perforation Depth (MD)	From		To	Departed Loc	22 - Dec - 2011	09:00	MST

Well Data

Description	New / Used	Max pressure psig	Size in	ID in	Weight lbm/ft	Thread	Grade	Top MD ft	Bottom MD ft	Top TVD ft	Bottom TVD ft
Open Hole				13.5					525.		
Surface Casing	Used		9.625	8.921	36.		J-55		525.		

Tools and Accessories

Type	Size	Qty	Make	Depth	Type	Size	Qty	Make	Depth	Type	Size	Qty	Make
Guide Shoe					Packer					Top Plug			
Float Shoe					Bridge Plug					Bottom Plug			
Float Collar					Retainer					SSR plug set			
Insert Float										Plug Container			
Stage Tool										Centralizers			

Miscellaneous Materials

Gelling Agt	Conc	Surfactant	Conc	Acid Type	Qty	Conc	%
Treatment Fld	Conc	Inhibitor	Conc	Sand Type	Size		Qty

Summit
Version:

Wednesday, January 04, 2012 10:00:00

Fluid Data									
Stage/Plug #: 1									
Fluid #	Stage Type	Fluid Name	Qty	Qty uom	Mixing Density lbm/gal	Yield ft ³ /sk	Mix Fluid Gal/sk	Rate bbl/min	Total Mix Fluid Gal/sk
1	Water Spacer		15.00	bbl	8.34	.0	.0	4.0	
2	Swiftcem B2 13.0#	SWIFTCM (TM) SYSTEM (452990)	225.0	sacks	13.	1.94	10.67	5.0	10.67
10.67 Gal		FRESH WATER							
Calculated Values		Pressures		Volumes					
Displacement		Shut In: Instant		Lost Returns		Cement Slurry		Pad	
Top Of Cement		5 Min		Cement Returns		Actual Displacement		Treatment	
Frac Gradient		15 Min		Spacers		Load and Breakdown		Total Job	
Rates									
Circulating		Mixing		Displacement		Avg. Job			
Cement Left In Pipe		Amount	0 ft	Reason	Shoe Joint				
Frac Ring # 1 @	ID	Frac ring # 2 @	ID	Frac Ring # 3 @	ID	Frac Ring # 4 @	ID		
The Information Stated Herein Is Correct				Customer Representative Signature					

HALLIBURTON