

HALLIBURTON

**CONTINENTAL RESOURCES INC
PO BOX 1032
ENID, Oklahoma**

Dunn 1-13H

CYCLONE/12

Post Job Summary **Cement Intermediate Casing**

Date Prepared: 01/09/2012
Version: 1

Service Supervisor: KELEHER, JASON

Submitted by: PLIENESS, RYAN

HALLIBURTON

HALLIBURTON

Wellbore Geometry

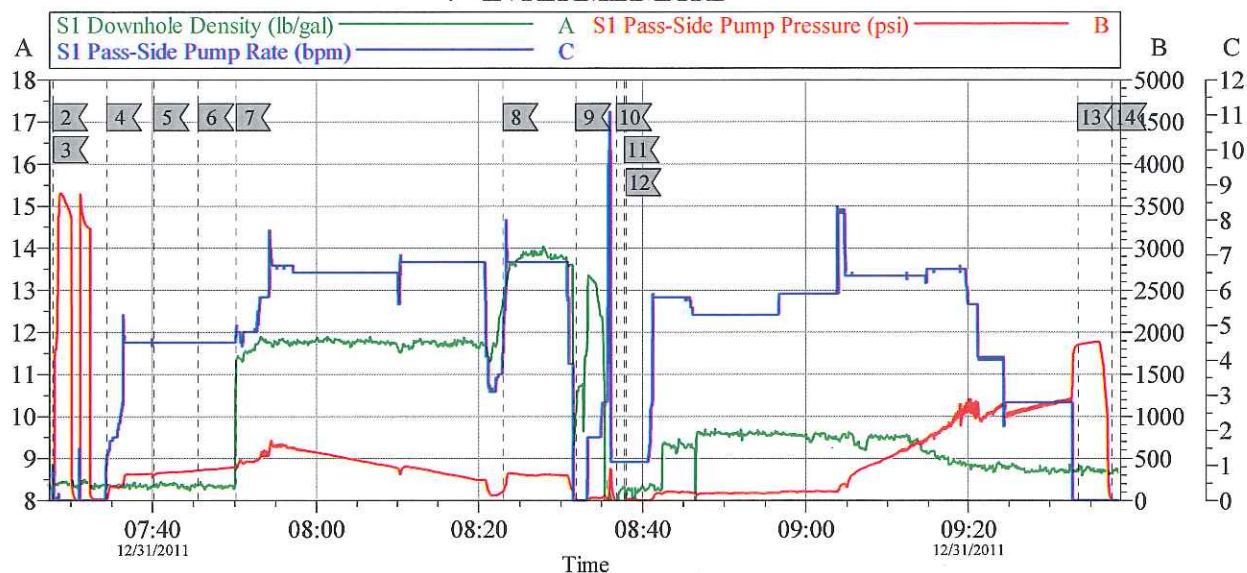
Job Tubulars					MD		TVD		Excess %	Shoe Joint Length ft
Type	Description	Size in	ID in	Wt lbm/ft	Top ft	Bottom ft	Top ft	Bottom ft		
Casing	Surface Casing	9.63	8.921	36.00	0.00	525.00	0.00	0.00	0.00	0.00
Open Hole Section	Open Hole		8.750		525.00	6,986.00	0.00	0.00	33.00	
Casing	Intermediate Casing	7.00	6.276	26.00	0.00	6,983.00			0.00	89.00

Pumping Schedule

Stage / Plug #	Fluid #	Fluid Type	Fluid Name	Surface Density lbm/gal	Avg Rate bbl/min	Surface Volume	Downhole Volume
1	1	Spacer	Water Spacer	8.33	4.00	20.0 bbl	20.0 bbl
1	2	Spacer	MUD FLUSH III	8.33	4.00	24.0 bbl	24.0 bbl
1	3	Spacer	Water Spacer	8.33	0.00	20.0 bbl	20.0 bbl
1	4	Cement Slurry	EXTENDACEM B1	11.80	5.00	570.0 sacks	570.0 sacks
1	5	Cement Slurry	Expandacem	14.60	5.00	200.0 sacks	200.0 sacks

Data Acquisition

CONTINENTAL - DUNN 1-13H 7" INTERMEDIATE



Global Event Log

1 Starting Job	05:43:41	2 Start Job	07:27:48	3 Test Lines	07:27:52
4 Pump Spacer 1	07:34:22	5 Pump Spacer 2	07:40:12	6 Pump Spacer 1	07:45:36
7 Pump Lead Cement	07:50:08	8 Pump Tail Cement	08:22:57	9 Shutdown	08:31:52
10 Clean Lines	08:36:50	11 Drop Top Plug	08:37:47	12 Pump Displacement	08:37:59
13 Bump Plug	09:33:29	14 End Job	09:37:34	15 Ending Job	09:40:33

Customer: CONTINENTAL
Well Description: INTERMEDIATE

Job Date: 31-Dec-2011
UWI: 05-123-34697-00

Sales Order #: 9177312

OptiCem v6.4.2
31-Dec-11 09:46

HALLIBURTON

Service Supervisor Reports

Job Log

Date/Time	Chart #	Activity Code	Pump Rate	Cum Vol	Pump	Pressure (psig)	Comments
12/31/2011 02:30		Arrive at Location from Service Center					
12/31/2011 04:30		Assessment Of Location Safety Meeting					PERFORM HAZARD HUNT AND HOLD PRE RIG UP SAFETY MEETING WITH CREW
12/31/2011 07:27		Test Lines					PRESSURE TEST TO 3500 PSI
12/31/2011 07:34		Pump Spacer 1	4.5	20		319.0	RIG WATER
12/31/2011 07:40		Pump Spacer 2	4.5	24		340.0	MUDFLUSH III MIXED IN RIG WATER
12/31/2011 07:45		Pump Spacer 1	4.5	20		390.0	RIG WATER
12/31/2011 07:50		Pump Lead Cement	6.5	252		226.0	570 SKS EXTENDACEM MIXED AT 11.8 PPG WITH RIG WATER
12/31/2011 08:22		Pump Tail Cement	6.5	60		299.0	200 SKS EXPANDACEM MIXED AT 13.8 PPG WITH RIG WATER
12/31/2011 08:31		Shutdown					
12/31/2011 08:36		Clean Lines					
12/31/2011 08:37		Drop Top Plug					PLUG PRE LOADED
12/31/2011 08:37		Pump Displacement	3	263		1320.0	DRILLING MUD SUPPLIED BY RIG
12/31/2011 09:33		Bump Plug				1640.0	GOOD RETURNS THROUGHOUT JOB. AT 235 BBL AWAY IN DISPLACEMENT
12/31/2011 09:36		Check Floats				1680.0	MUDFLUSH BACK TO SURFACE
12/31/2011 09:37		End Job					FLOATS HELD

The Road to Excellence Starts with Safety

Sold To #: 301520		Ship To #: 2897594		Quote #:		Sales Order #: 9177312	
Customer: CONTINENTAL RESOURCES INC				Customer Rep: MULLEN, JOHN			
Well Name: Dunn			Well #: 1-13H		API/UWI #:		
Field:		City (SAP): BRIGGS DALE		County/Parish: Weld		State: Colorado	
Contractor: CYCLONE			Rig/Platform Name/Num: 12				
Job Purpose: Cement Intermediate Casing							
Well Type: Development Well			Job Type: Cement Intermediate Casing				
Sales Person: FLING, MATTHEW			Srvs Supervisor: KELEHER, JASON			MBU ID Emp #: 437348	
Job Personnel							
HES Emp Name	Exp Hrs	Emp #	HES Emp Name	Exp Hrs	Emp #	HES Emp Name	Exp Hrs
BARNES, BRIAN L		485204	BOETTIGER, MARK		500519	BOURGEOIS, KEVIN Paul	
JEWELL, WILLIAM Uris		503358	KELEHER, JASON E		437348	MILLER, GEOFFREY Alan	
RAMOS, REFUGIO Castro		435413	ROMERO, JOE		512137		
Equipment							
HES Unit #	Distance-1 way	HES Unit #	Distance-1 way	HES Unit #	Distance-1 way	HES Unit #	Distance-1 way
11019824C	63 mile	11410470C	63 mile				
Job Hours							

HALLIBURTON

Date	On Location Hours	Operating Hours	Date	On Location Hours	Operating Hours	Date	On Location Hours	Operating Hours
TOTAL						Total is the sum of each column separately		

Job						Job Times				
Formation Name						Date	Time	Time Zone		
Formation Depth (MD)		Top	Bottom			Called Out	30 - Dec - 2011	23:30	MST	
Form Type		BHST				On Location	31 - Dec - 2011	02:30	MST	
Job depth MD		6983. ft		Job Depth TVD		6983. ft	Job Started	31 - Dec - 2011	07:27	MST
Water Depth		Wk Ht Above Floor				Job Completed	24 - Dec - 2011	09:37	MST	
Perforation Depth (MD)		From	To			Departed Loc	31 - Dec - 2011	11:00	MST	

Well Data											
Description	New / Used	Max pressure psig	Size in	ID in	Weight lbm/ft	Thread	Grade	Top MD ft	Bottom MD ft	Top TVD ft	Bottom TVD ft
Open Hole				8.75				525.	6986.		
Intermediate Casing	Unknown		7.	6.276	26.				6983.		
Surface Casing	Used		9.625	8.921	36.		J-55		525.		

Tools and Accessories													
Type	Size	Qty	Make	Depth	Type	Size	Qty	Make	Depth	Type	Size	Qty	Make
Guide Shoe					Packer					Top Plug			
Float Shoe					Bridge Plug					Bottom Plug			
Float Collar					Retainer					SSR plug set			
Insert Float										Plug Container			
Stage Tool										Centralizers			

Miscellaneous Materials											
Gelling Agt		Conc		Surfactant		Conc		Acid Type		Qty	Conc %
Treatment Fld		Conc		Inhibitor		Conc		Sand Type		Size	Qty

Fluid Data									
Stage/Plug #: 1									
Fluid #	Stage Type	Fluid Name	Qty	Qty uom	Mixing Density lbm/gal	Yield ft ³ /sk	Mix Fluid Gal/sk	Rate bbl/min	Total Mix Fluid Gal/sk
1	Water Spacer		20.00	bbl	8.33	.0	.0	4.0	
2	MUD FLUSH III	MUD FLUSH III - SBM (528788)	24.00	bbl	8.33	.0	8.33	4.0	
3	Water Spacer		20.00	bbl	8.33	.0	.0	.0	
4	EXTENDACEM B1	EXTENDACEM (TM) SYSTEM (452981)	570.0	sacks	11.8	2.06	11.25	5.0	11.25
	7.5 lbm	LIME - HYDRATED, BULK (100005052)							
	0.2 %	FE-2 (100001615)							
	0.1 %	HALAD(R)-344, 50 LB (100003670)							
	11.25 Gal	FRESH WATER							
5	Expandacem	EXPANDACEM (TM) SYSTEM (452979)	200.0	sacks	14.6	1.46	6.1		6.1
	6.1 Gal	FRESH WATER							

Calculated Values		Pressures		Volumes					
Displacement		Shut In: Instant		Lost Returns		Cement Slurry		Pad	
Top Of Cement		5 Min		Cement Returns		Actual Displacement		Treatment	
Frac Gradient		15 Min		Spacers		Load and Breakdown		Total Job	

Rates									
Circulating		Mixing		Displacement		Avg. Job			
Cement Left In Pipe	Amount	89 ft	Reason	Shoe Joint					
Frac Ring # 1 @	ID		Frac ring # 2 @	ID		Frac Ring # 3 @	ID	Frac Ring # 4 @	ID

The Information Stated Herein Is Correct

Customer Representative Signature