

HALLIBURTON

BOREHOLE VOLUME
PLOT

COMPANY		LARAMIE ENERGY	
WELL		HAWXHURST 25-01B	
FIELD		BUZZARD CREEK	
COUNTY		MESA	
STATE		CO	
Permanent Datum Log measured from Drilling measured from	GL KB KB	Sect. 24 Twp. 9 S Rge. 95 W	Elev. 6354.0 ft D.F. G.L. 6375.0 ft 6375.0 ft 6354.0 ft
	23-Sep-11 ONE		
Date			
Run No.			
Depth - Driller			
Depth - Logger			
Bottom - Logged Interval			
Top - Logged Interval			
Casing - Driller			
Casing - Logger			
Bit Size			
Type Fluid in Hole			
Density	Viscosity		
PH	Fluid Loss		
Source of Sample			
Rm @ Meas. Temperature			
Rmf @ Meas. Temperature			
Rmc @ Meas. Temperature			
Source Rmf	Rmc		
Rm @ BHT			
Time Since Circulation			
Time on Bottom			
Max. Rec. Temperature			
Equipment	Location		
Recorded By			
Witnessed By			
COMPANY		LARAMIE ENERGY	
WELL		HAWXHURST 25-01B	
FIELD		BUZZARD CREEK	
COUNTY		MESA	
STATE		CO	
API No. 05077101640000		Other Services: RWCH	
Location SHL: 1344' FSL & 616' FEL BHL: 657' FNL & 644' FEL			

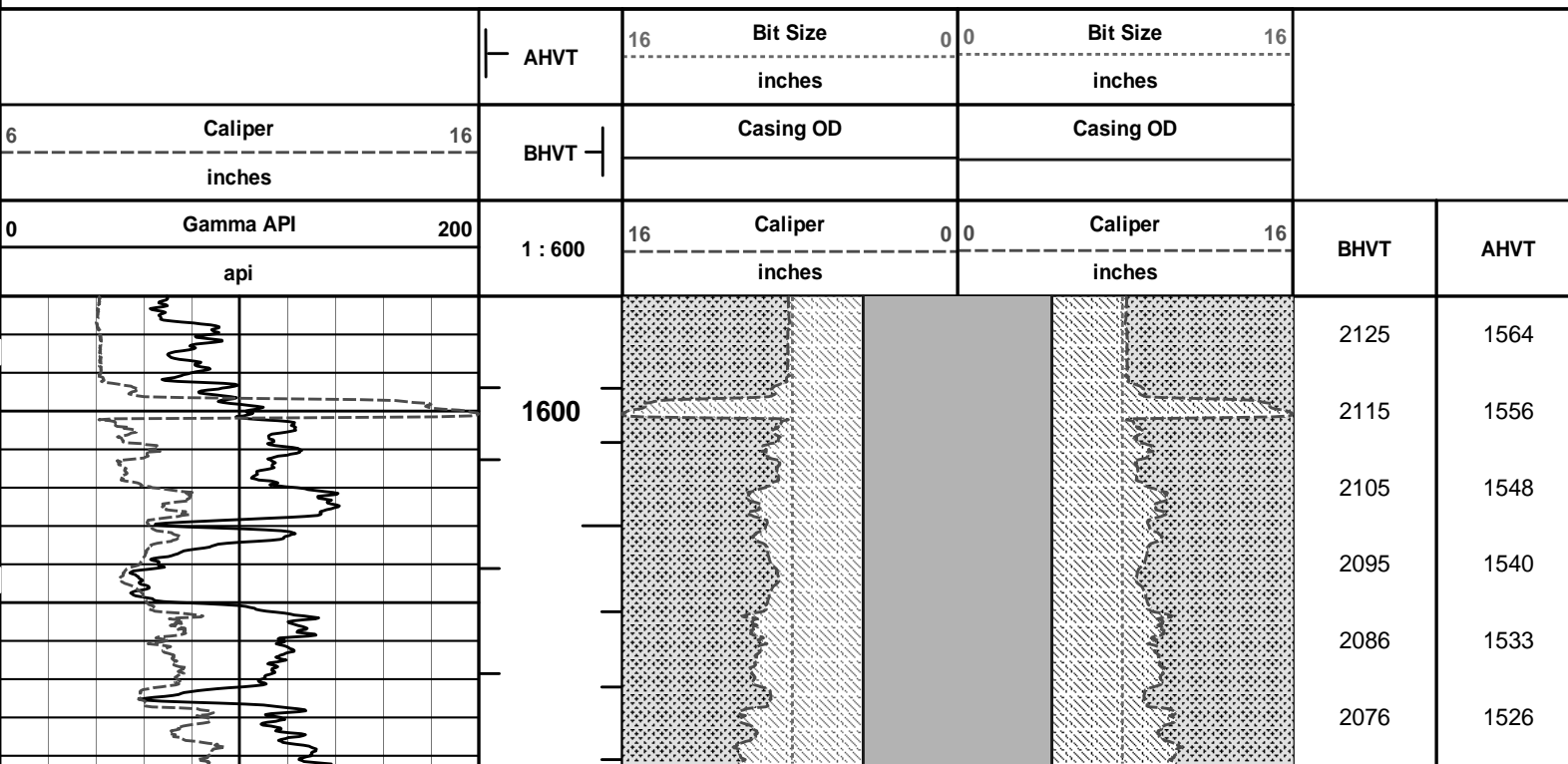
Fold here

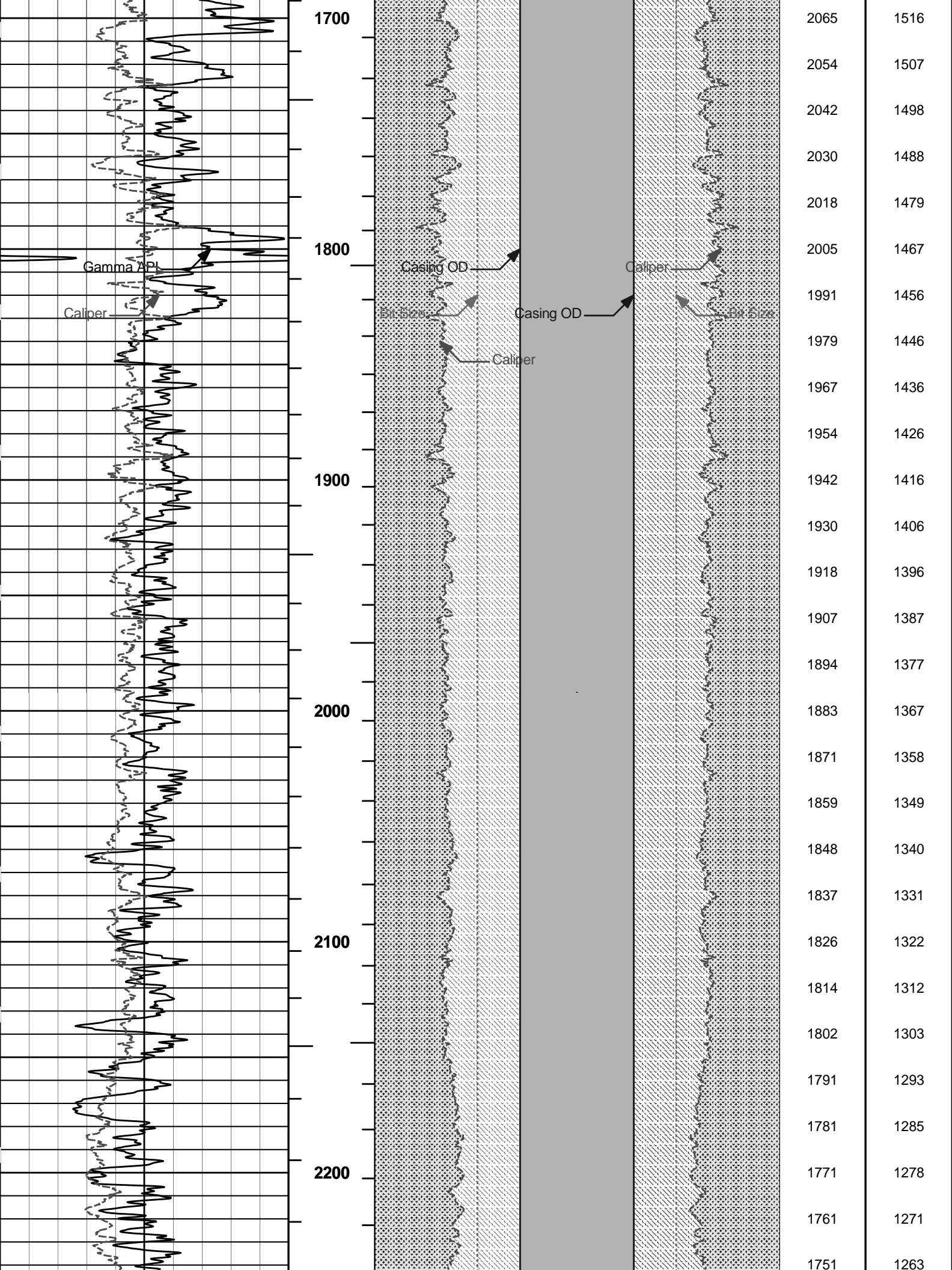
Service Ticket No.: 8478435				API Serial No.: 05077101640000				PGM Version: WL INSITE R3.4.2 (Build 2)											
CHANGE IN MUD TYPE OR ADDITIONAL SAMPLE						RESISTIVITY SCALE CHANGES													
Date		Sample No.				Type Log		Depth		Scale Up Hole		Scale Down Hole							
Depth-Driller																			
Type Fluid in Hole																			
Density		Viscosity																	
Ph		Fluid Loss																	
Source of Sample						RESISTIVITY EQUIPMENT DATA													
Rm @ Meas. Temp		@		@		Run No.		Tool Type & No.		Pad Type		Tool Pos.		Other					
Rmf @ Meas. Temp.		@		@		ONE		ACRT		N/A		1.5" S.O.		N/A					
Rmc @ Meas. Temp.		@		@				90194258E7486											
Source Rmf		Rmc																	
Rm @ BHT		@		@															
Rmf @ BHT		@		@															
Rmc @ BHT		@		@															
EQUIPMENT DATA																			
GAMMA				ACOUSTIC				DENSITY				NEUTRON							
Run No.		ONE		Run No.				Run No.		ONE		Run No.		ONE					
Serial No.		11005602		Serial No.				Serial No.		10951314		Serial No.		10846353					
Model No.		GTET		Model No.				Model No.		SDLT		Model No.		DSNT					
Diameter		3.625		No. of Cent.				Diameter		4.5"		Diameter		3.625"					
Detector Model No.		102A		Spacing				Log Type		GAMMA-GAMMA		Log Type		THERMAL					
Type		SCINT						Source Type		Cs-137		Source Type		Am241Be					
Length		8"		LSA [Y/N]				Serial No.		5153GW		Serial No.		DSN-388					
Distance to Source		10'		FWDA [Y/N]				Strength		1.5 Ci		Strength		15 Ci					
LOGGING DATA																			
GENERAL				GAMMA				ACOUSTIC				DENSITY				NEUTRON			

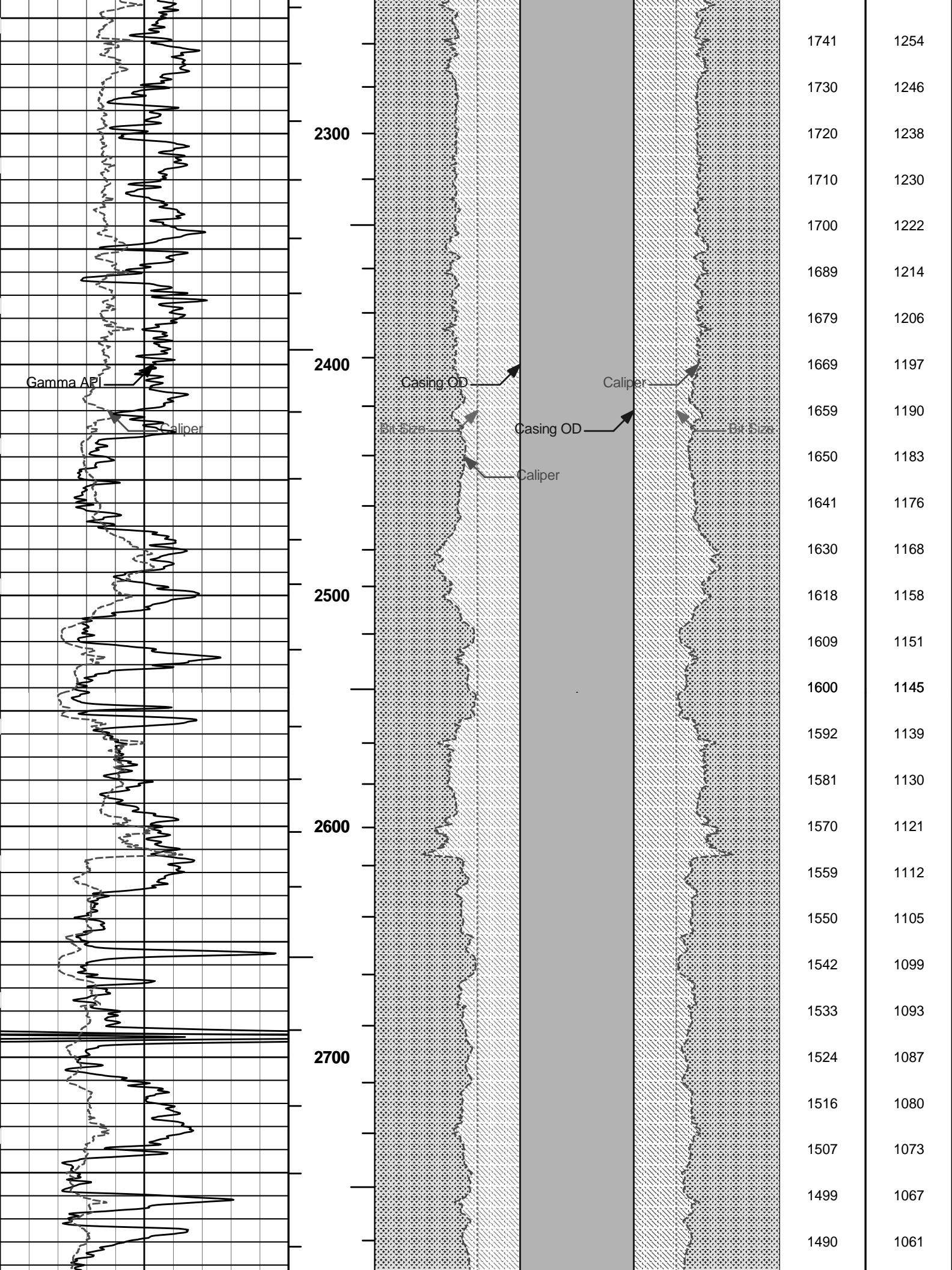
[illegible]

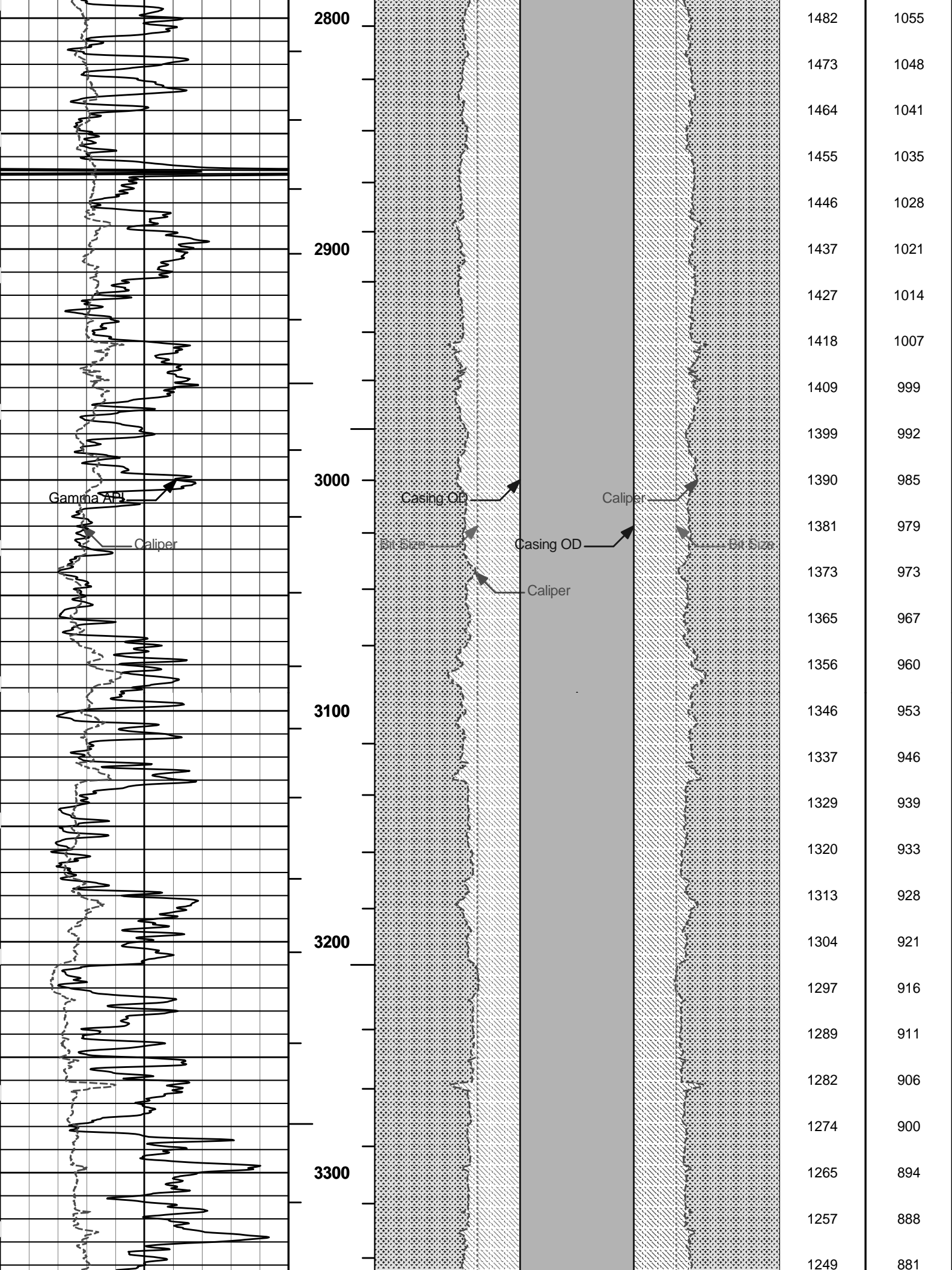
HALLIBURTON	Plot Time: 23-Sep-11 06:21:13 Plot Range: 1570 ft to 6664.42 ft Data: LARA_HAWX25_01B\Well Based\MAIN_CASING* Plot File: \\BHV\IQ_BHV_SDL_RM
--------------------	--

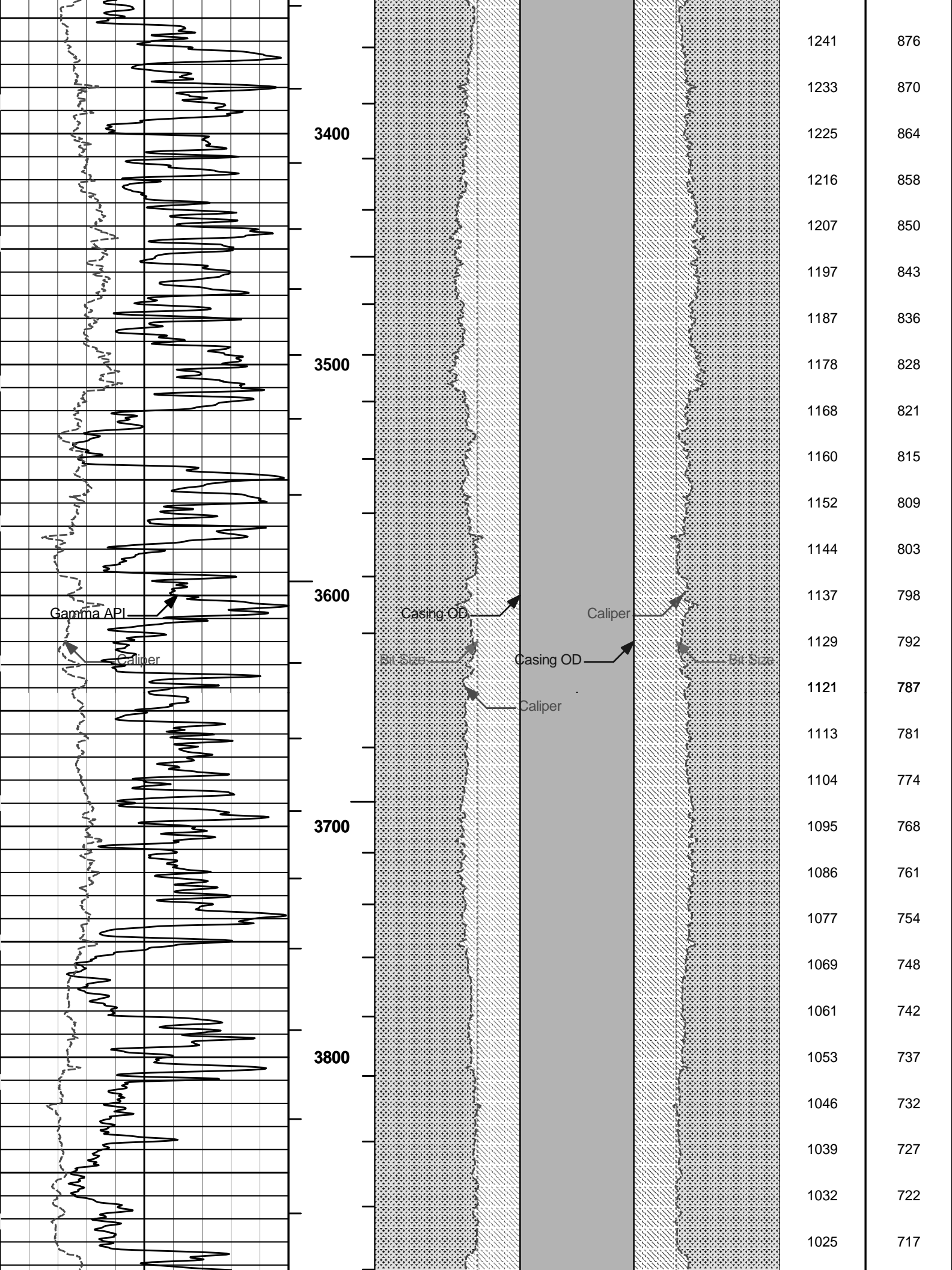
AHV USES 4.5" CASING

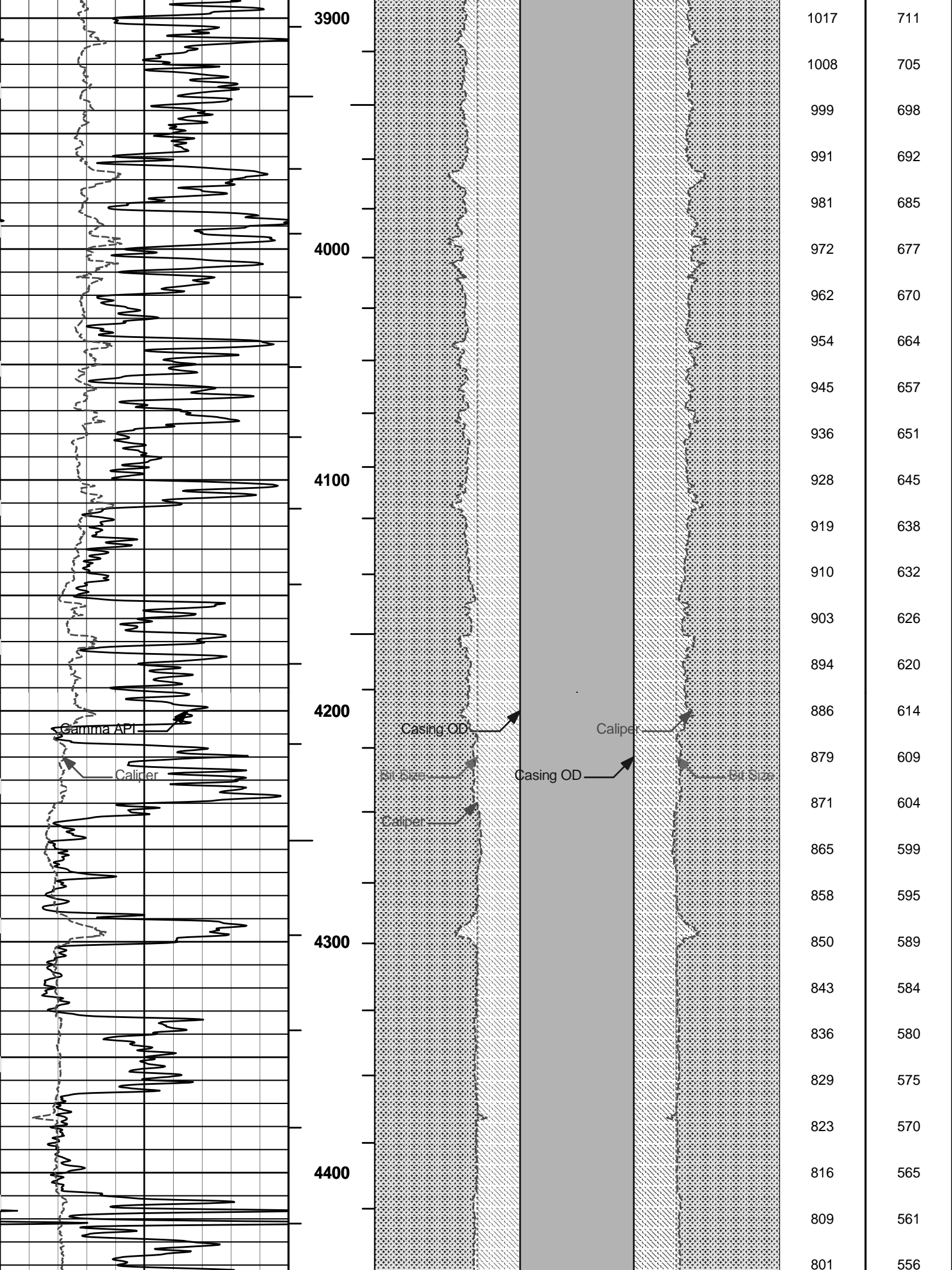


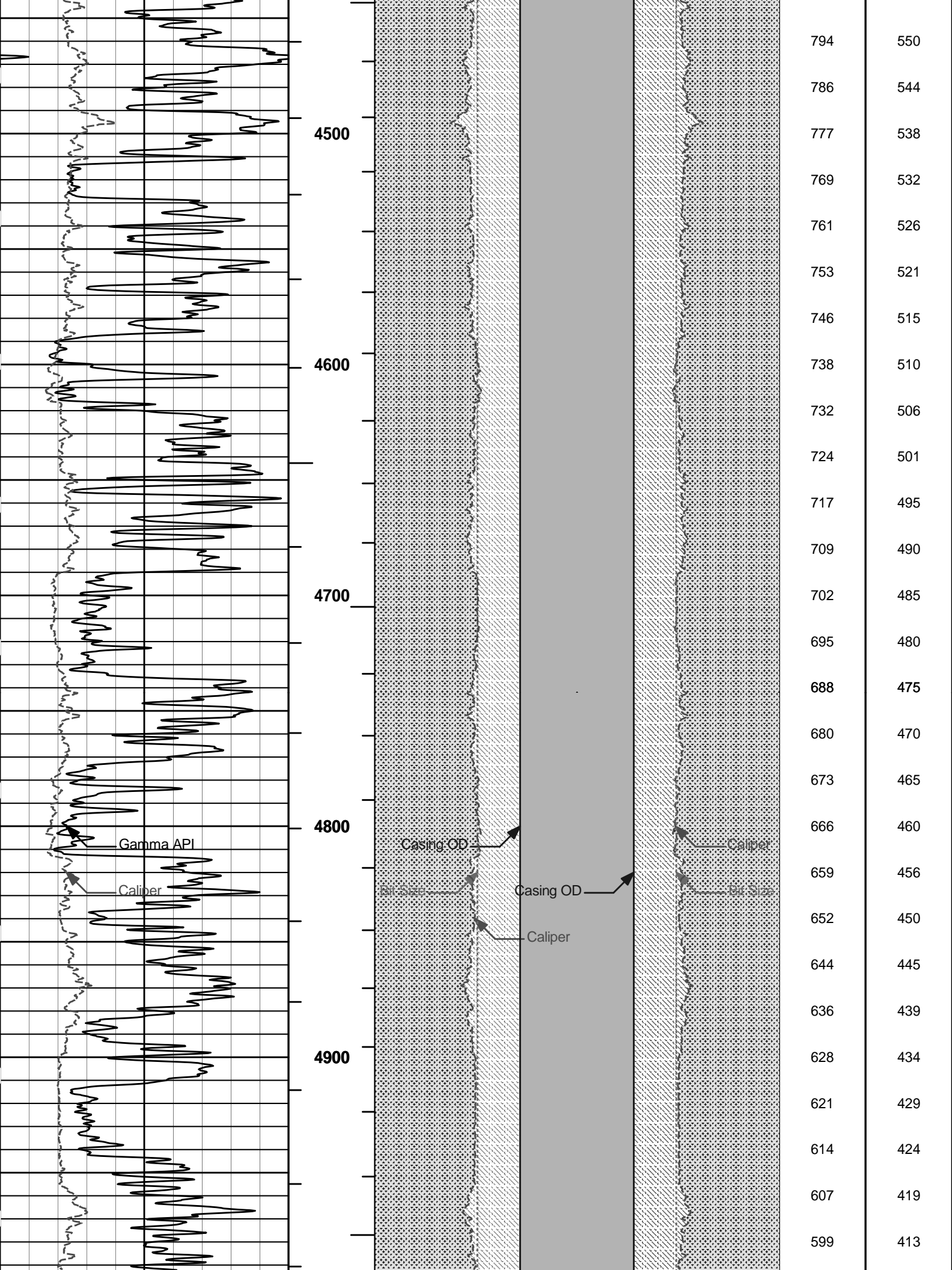


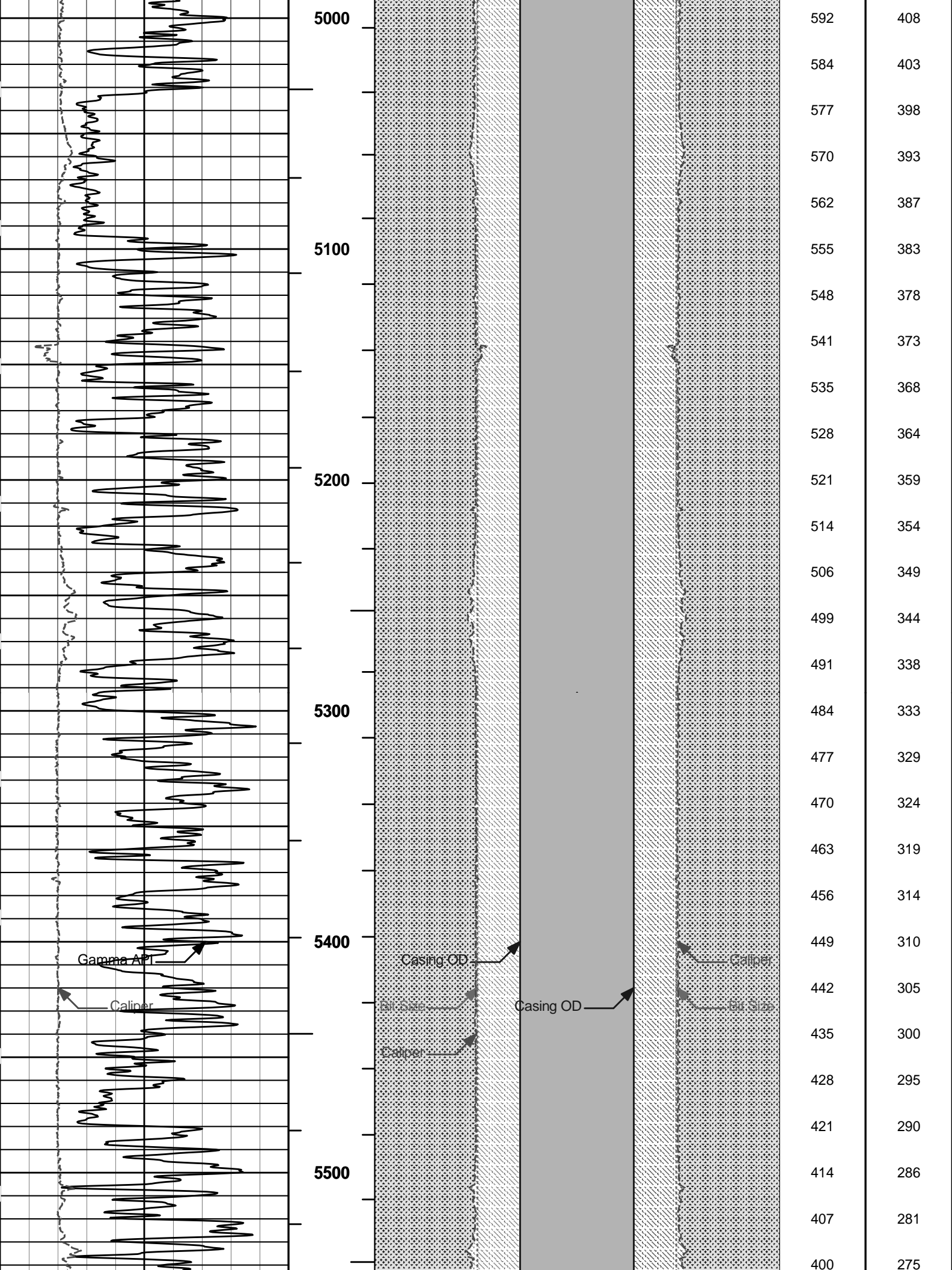


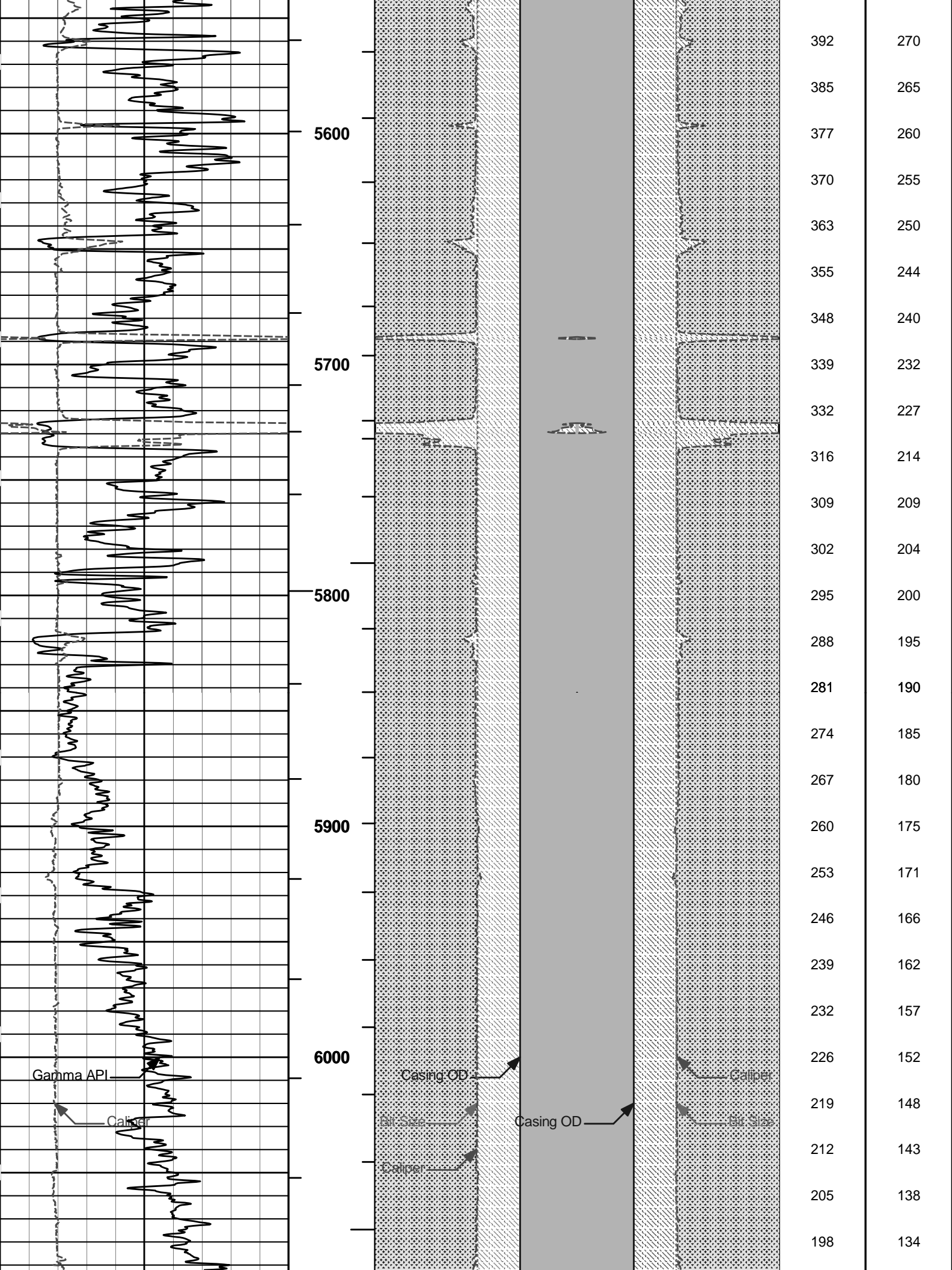


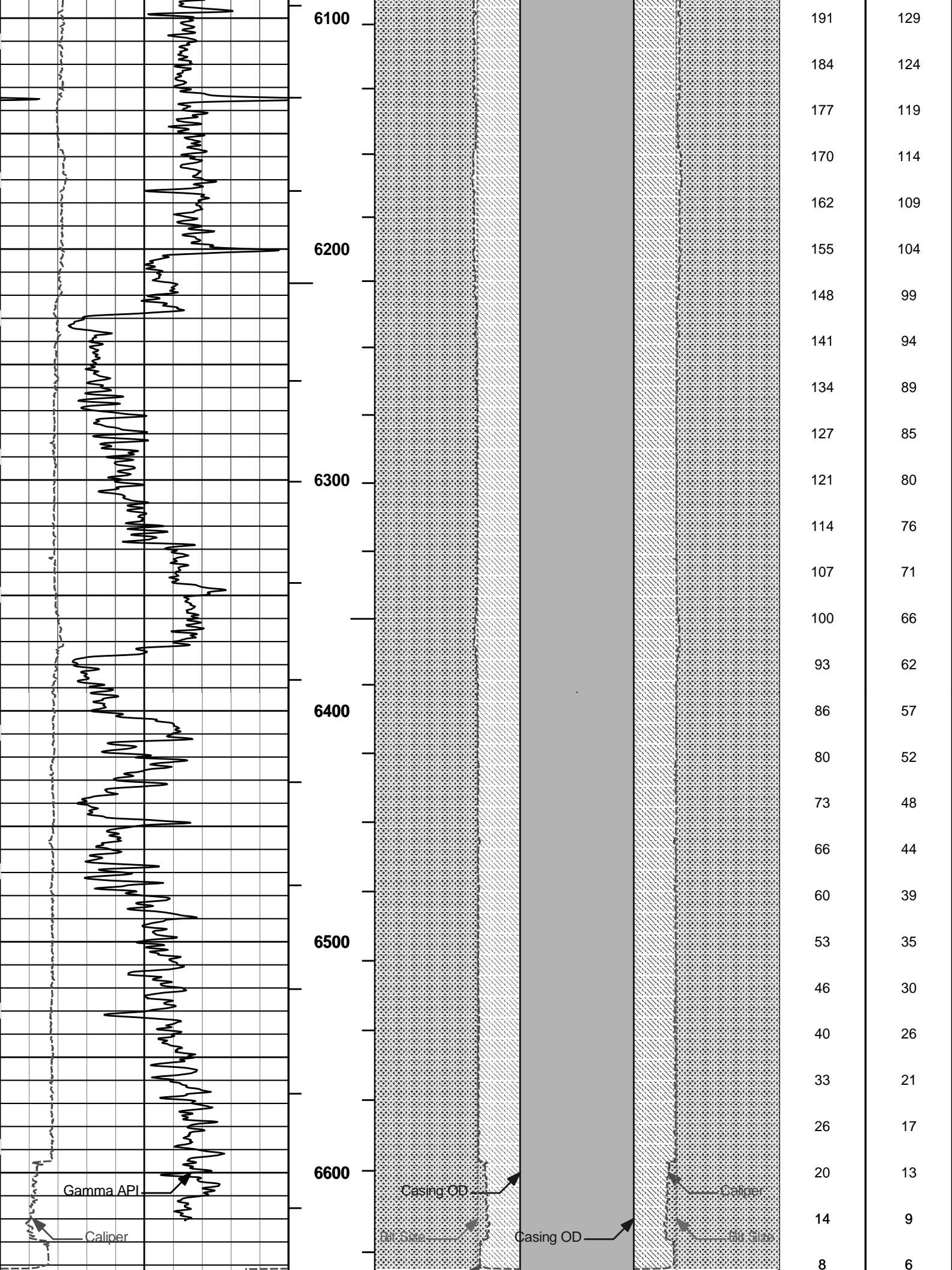












[illegible]

HALLIBURTON

Plot Time: 23-Sep-11 06:21:19
Plot Range: 1570 ft to 6664.42 ft
Data: LARA_HAWX25_01B\Well Based\MAIN_CASING*
Plot File: \\BHV\IQ_BHV_SDL_RM

AHV USES 4.5" CASING

COMPANY	LARAMIE ENERGY		
WELL	HAWXHURST 25-01B		
FIELD	BUZZARD CREEK		
COUNTY	MESA	STATE	CO
HALLIBURTON		BOREHOLE VOLUME PLOT	