



February 15, 2012

Colorado Oil and Gas Conservation Commission
The Chancery Building
1120 Lincoln Street, Suite 801
Denver, CO 80203

Attn: Mr. David Neslin, Director

RE: Siebring 5-63 PAD
Wells: Siebring 5-63-32-16H (160 Spacing)
Siebring 5-63-32-17H (320 Spacing)
Siebring 5-63-32-32H (320 Spacing)
Siebring 5-63-32-48H (320 Spacing)
Niobrara New Drill
Township 5 North, Range 63 West, 6th P.M.
Section 32: N/2N/2, N/2, N/2S/2
SHL: SE/4NE/4
Weld County, Colorado

Mr. Neslin

Bill Barrett Corporation ("BBC") is planning to drill the captioned boundary well in accordance with the provisions of COGCC 318A.e.

BBC's proposed wellbore spacing units consists of the N/2N/2, N/2, N/2S/2 of Section 32, T5N, R63W, creating the above referenced spacing units per well in which we will target the Niobrara formation. In accordance with COGCC Rule 318A.e.(6), all of the owners have been notified about the Governmental Section Temporary Drilling and Spacing Unit for the subject well.

Enclosed are copies of the following documents to assist you in your review and approval of BBC's proposed APD for the captioned well.

- Plat illustrating the proposed wellbore spacing unit on existing location plat.

Thank you for your attention to the enclosed. BBC respectfully requests that the COGCC review the enclosed information and approve the Application for Permit to Drill the captioned well.

Sincerely,

A handwritten signature in blue ink, appearing to read "Wes DiGrappa", written over a blue circular stamp.

Wes DiGrappa
Land Assistant

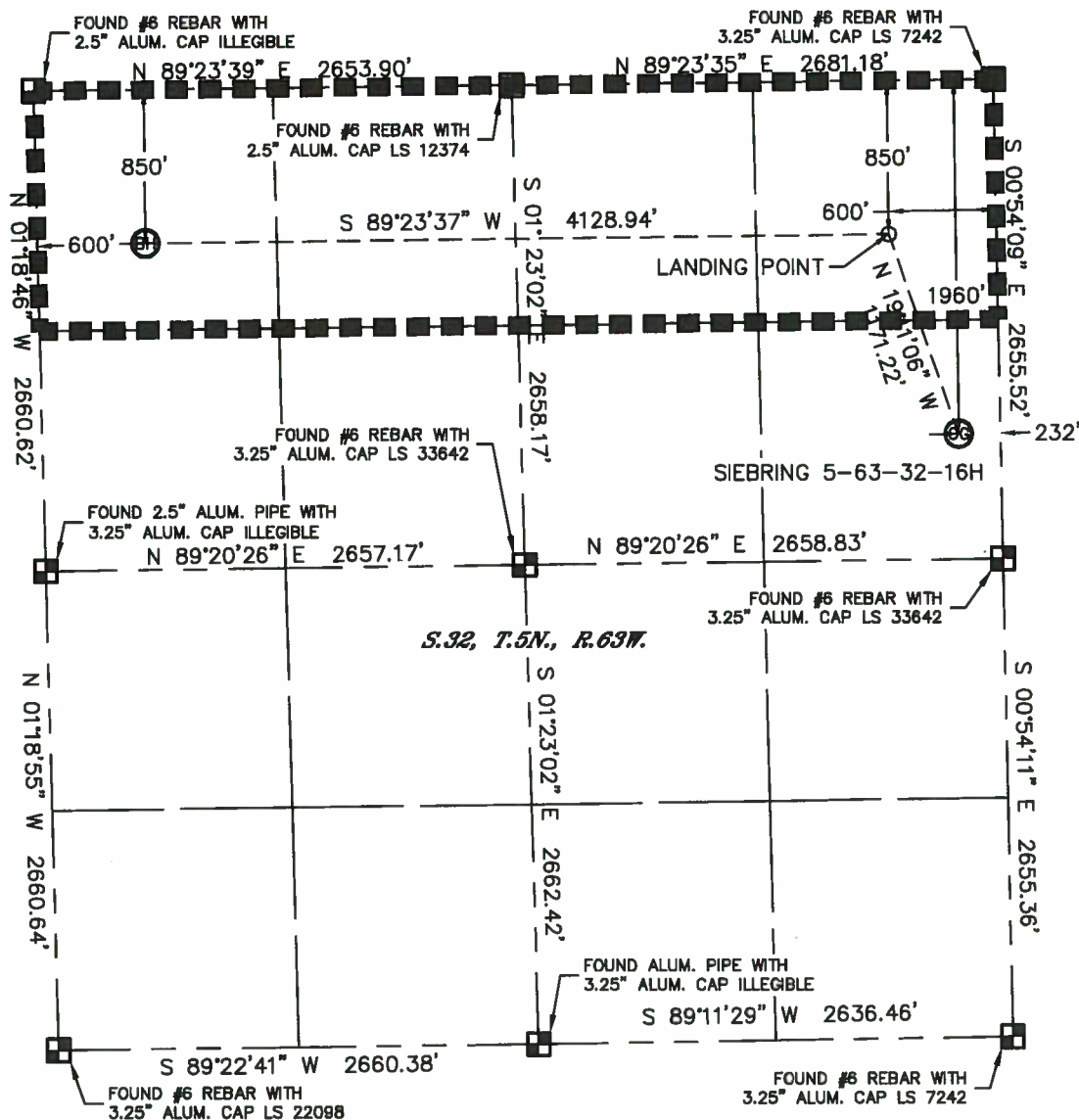


Lat40°, Inc. 1635 Foxtrail Drive, Suite 325 Loveland, CO 970-776-3321

PROPOSED SPACING UNIT

THIS MAP DOES NOT REPRESENT A BOUNDARY SURVEY

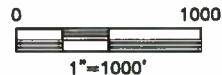
SECTION: 32
TOWNSHIP: 5N
RANGE: 63W



In accordance with a request from Glenn Berglund with BILL BARRETT CORPORATION.

Lat40°, Inc. has determined the surface location of the SIEBRING 5-63-32-16H to be 1960' from the NORTH line and 232' from the EAST line and the bottom hole to be 850' from the NORTH line and 600' from the WEST line as measured at right angles from the section lines of Section 32, Township 5 North, Range 63 West of the Sixth Principal Meridian, County of Weld, State of Colorado.

I hereby state that this Well Location Certificate was prepared by me, or under my direct supervision, that the fieldwork was completed on 10/25/11, for and on behalf of BILL BARRETT CORPORATION. That this is not a Land Survey Plat or an Improvement Survey Plat, and that it is not to be relied upon for establishment of fence, building, or other future improvement lines.



NOTE:

- 1) Bearings shown are Grid Bearings of the Colorado State Plane Coordinate System, North Zone, North American Datum 1983/2007. The lineal dimensions as contained herein are based upon the "U.S. Survey Foot."
- 2) Ground elevations are based on an observed GPS elevation (NAVD 1988 DATUM).
- 3) IMPROVEMENTS: See LOCATION DRAWING for all visible improvements within 400' of disturbed area.
- 4) SURFACE USE: CROP LAND
- 5) INSTRUMENT OPERATOR: ADAM KELLY

SURFACE LOCATION

LAT: 40.35789°N (40°21'28.4"N)
LONG: 104.45128°W (104°27'04.5"W)
PDOP: 1.5
ELEV: 4570'
1/4, 1/4: SE1/4NE1/4
NEAREST PROPERTY LINE: 232' E

BOTTOM HOLE

LAT: 40.36095°N (40°21'39.4"N)
LONG: 104.46741°W (104°28'02.7"W)

LANDING POINT

LAT: 40.36093°N (40°27'39.4"N)
LONG: 104.45260°W (104°27'09.3"W)

NOTE

According to Colorado law, you must commence any legal action based upon any defect in this W.L.C. within three years after you discover such defect. In no event, may any action based upon any defect in this survey be commenced more than ten years after the date of the certificate shown hereon. (13-80-105 C.R.S.)

LEGEND

- = ALIQUOT MONUMENT AS DESCRIBED
 = CALCULATED POSITION

DATE: 1/26/12
PROJECT#: 2011312