

HALIBURTON

BOREHOLE VOLUME
PLOT

COMPANY				LARAMIE ENERGY			
WELL				HAWXHURST 19-13A			
FIELD				BRUSH CREEK			
COUNTY				MESA			
STATE				CO			
Permanent Datum				GL	Elev. 6354.0 ft		
Log measured from				KB	21.0 ft above perm. Datum		
Drilling measured from				KB	G.L. 6354.0 ft		
Date				05-Oct-11			
Run No.				ONE			
Depth - Driller				6535.00 ft			
Depth - Logger				6533.0 ft			
Bottom - Logged Interval				6513.0 ft			
Top - Logged Interval				1542.0 ft			
Casing - Driller				9.625 in @ 1547.0 ft	@		
Casing - Logger				1542.0 ft			
Bit Size				8.750 in	@		
Type Fluid in Hole				WBM			
Density				9.6 ppg	60.00 s/qt		
PH				Fluid Loss	9.50 pH	7.0 cpm	
Source of Sample				MUD TANK			
Rm @ Meas. Temperature				1.480 ohmm @ 72.00 degF	@		
Rmf @ Meas. Temperature				1.24 ohmm @ 75.00 degF	@		
Rmc @ Meas. Temperature				1.242 ohmm @ 75.00 degF	@		
Source Rmf				Rmc	CHART	CHART	
Rm @ BHT				0.61 ohmm @ 185.0 degF	@		
Time Since Circulation				10.0 hr			
Time on Bottom				05-Oct-11 12:04			
Max Rec. Temperature				185.0 degF @ 6533.0 ft	@		
Equipment				Location	11014853	GU, CO	
Recorded By				J. KRONABLE			
Witnessed By				KELLY CLAUSSSEN			

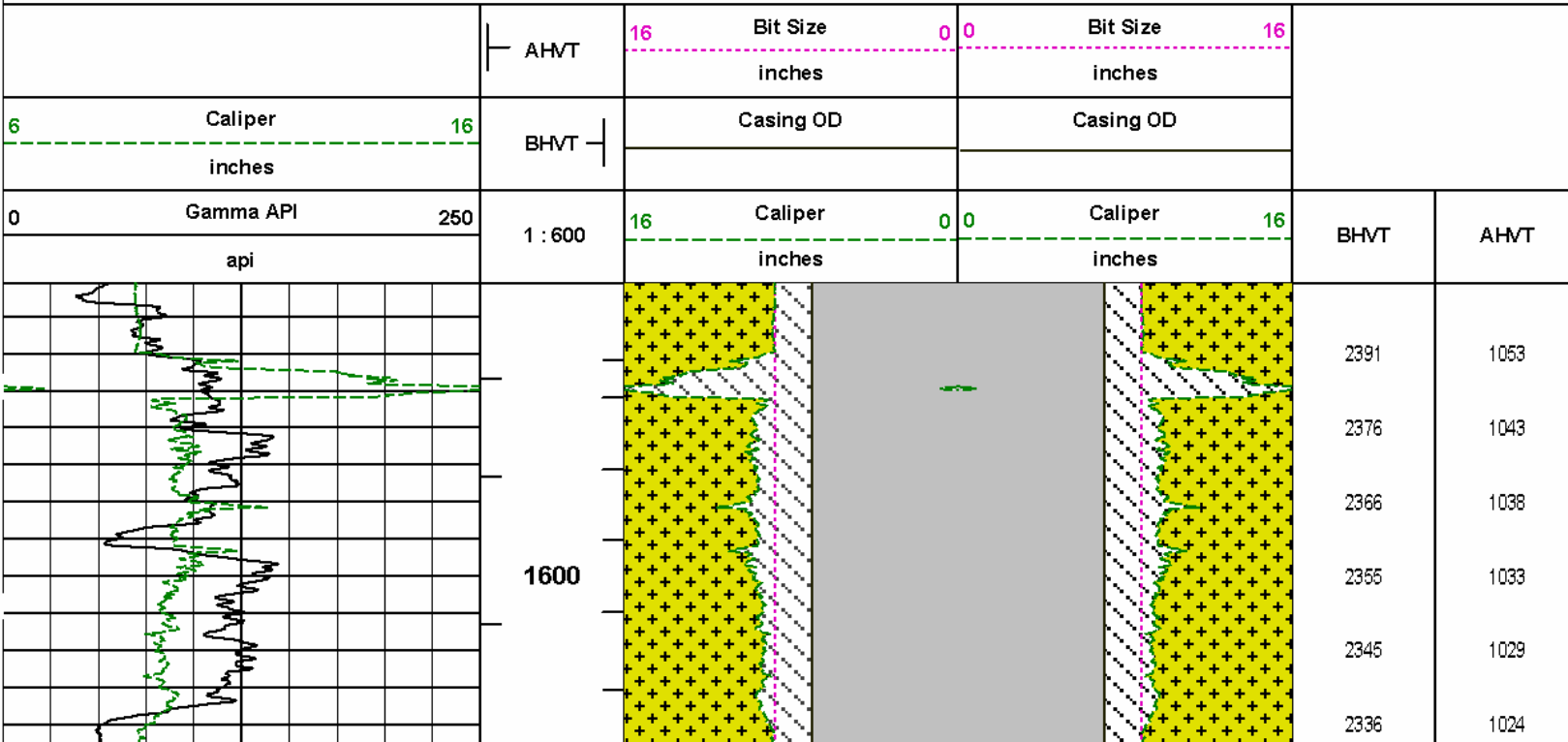
COMPANY
WELL
FIELD
COUNTY
STATE

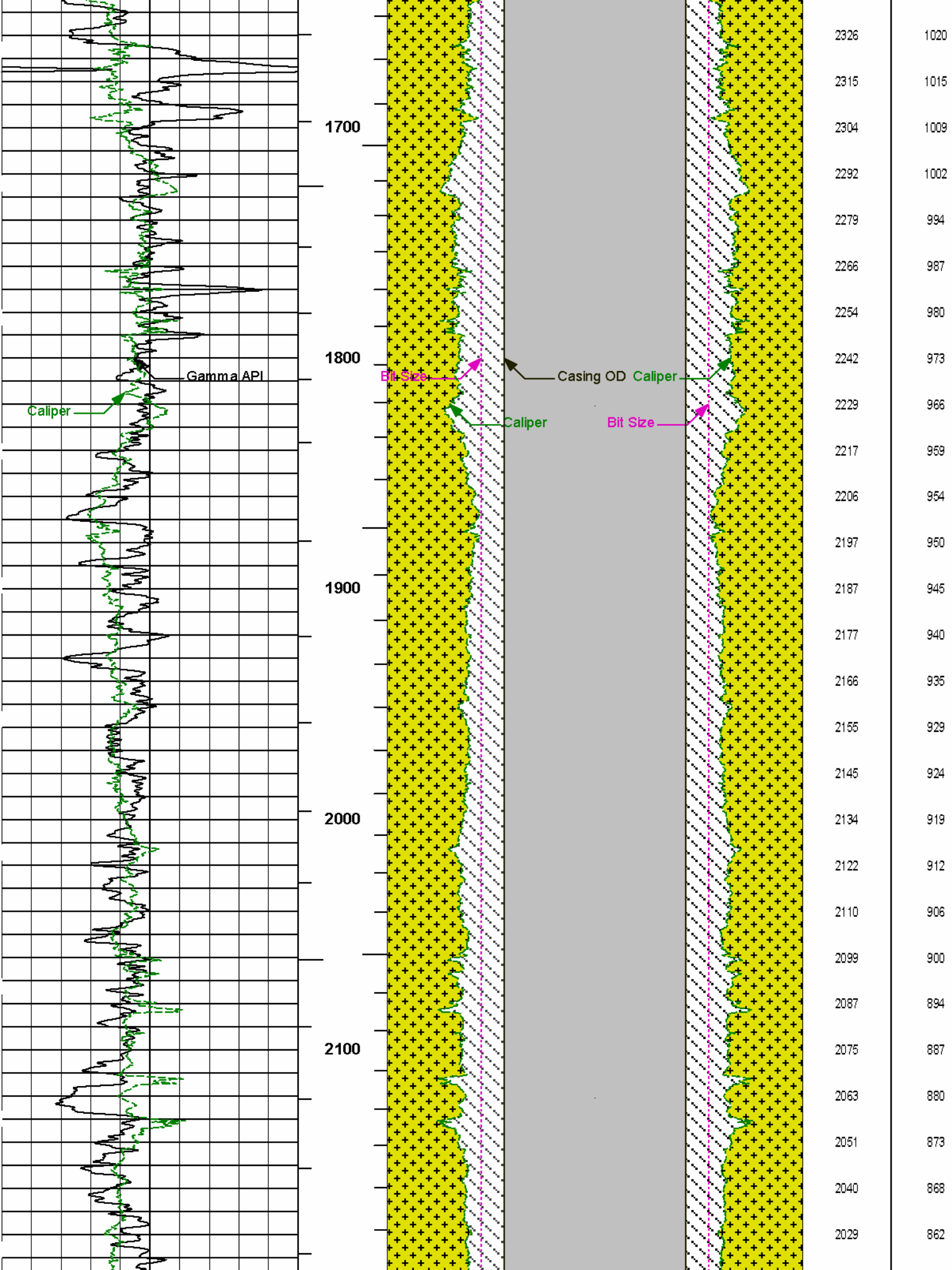
LARAMIE ENERGY
HAWXHURST 19-13A
BRUSH CREEK
MESA
MESA
STATE CO

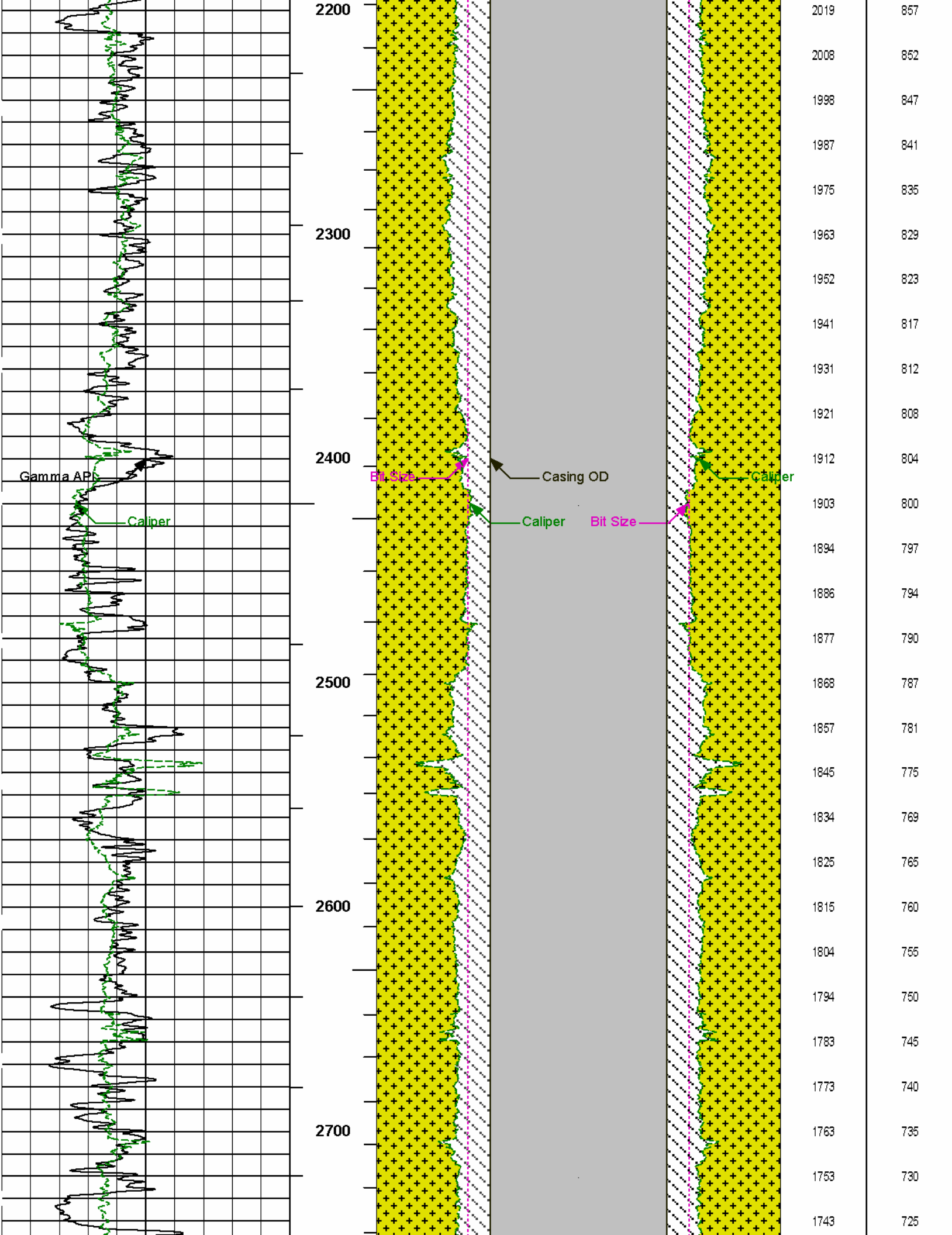
API No. 05077101660000
Location SHL 1349' FSL & 602' FEL
BHL 1080' FSL & 647' FWL
Other Services:
RWCH

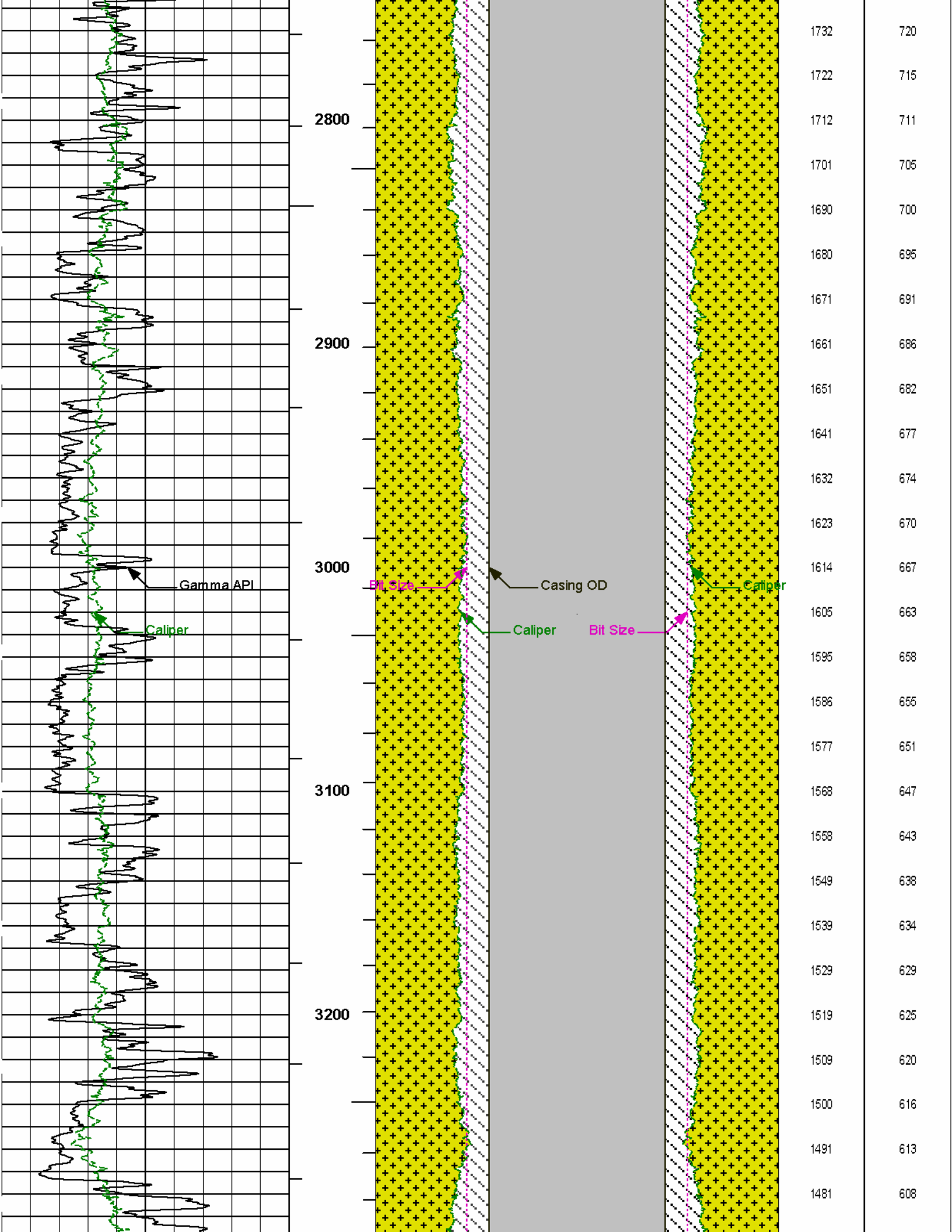
Fold here

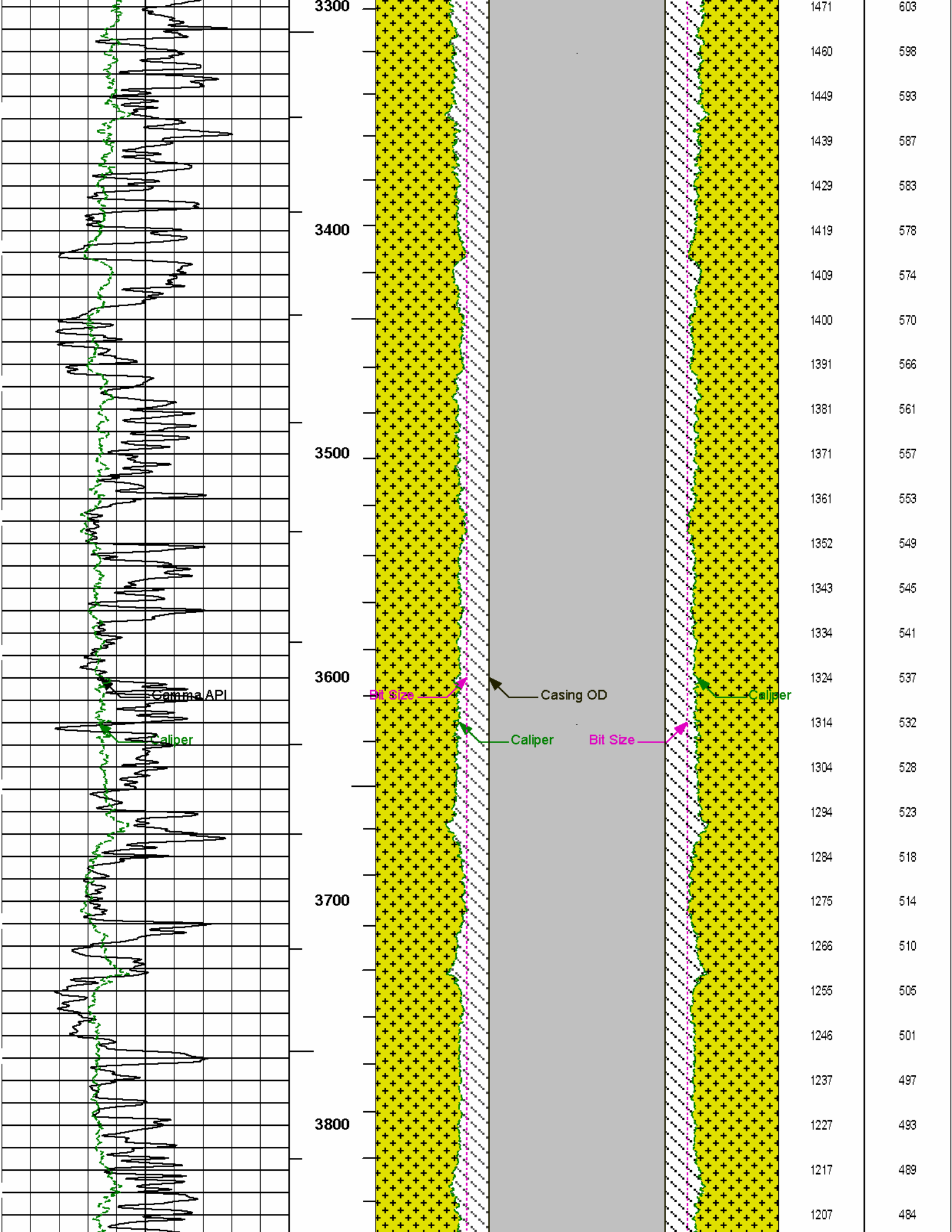
Service Ticket No.: 8512723						API Serial No.: 05077101660000						PGM Version: WL INSITE R3.4.2 (Build 2)													
CHANGE IN MUD TYPE OR ADDITIONAL SAMPLE												RESISTIVITY SCALE CHANGES													
Date		Sample No.										Type Log		Depth		Scale Up Hole				Scale Down Hole					
Depth-Driller																									
Type Fluid in Hole																									
Density		Viscosity																							
Ph		Fluid Loss																							
Source of Sample												RESISTIVITY EQUIPMENT DATA													
Rm @ Meas. Temp						@				@				Run No.		Tool Type & No.		Pad Type		Tool Pos.		Other			
Rmf @ Meas. Temp.						@				@				ONE		ACRT90194258		N/A		1.5"S.0		N/A			
Rmc @ Meas. Temp.						@				@						E-7486									
Source Rmf		Rmc																							
Rm @ BHT						@				@															
Rmf @ BHT						@				@															
Rmc @ BHT						@				@															
EQUIPMENT DATA																									
GAMMA						ACOUSTIC						DENSITY						NEUTRON							
Run No.		ONE				Run No.						Run No.		ONE				Run No.		ONE					
Serial No.		11005602				Serial No.						Serial No.		10951300				Serial No.		10993887					
Model No.		GTET				Model No.						Model No.		SDLT				Model No.		DSNT					
Diameter		3.625"				No. of Cent.						Diameter		4.5"				Diameter		3.625"					
Detector Model No.		102 A				Spacing						Log Type		GAM - GAM				Log Type		NEU - NEU					
Type		SCINT										Source Type		Cs 137				Source Type		Am241Be					
Length		8"				LSA [Y/N]						Serial No.		5153 GW				Serial No.		DSN-388					
Distance to Source		18'				FWDA [Y/N]						Strength		1.5 Ci				Strength		15 Ci					

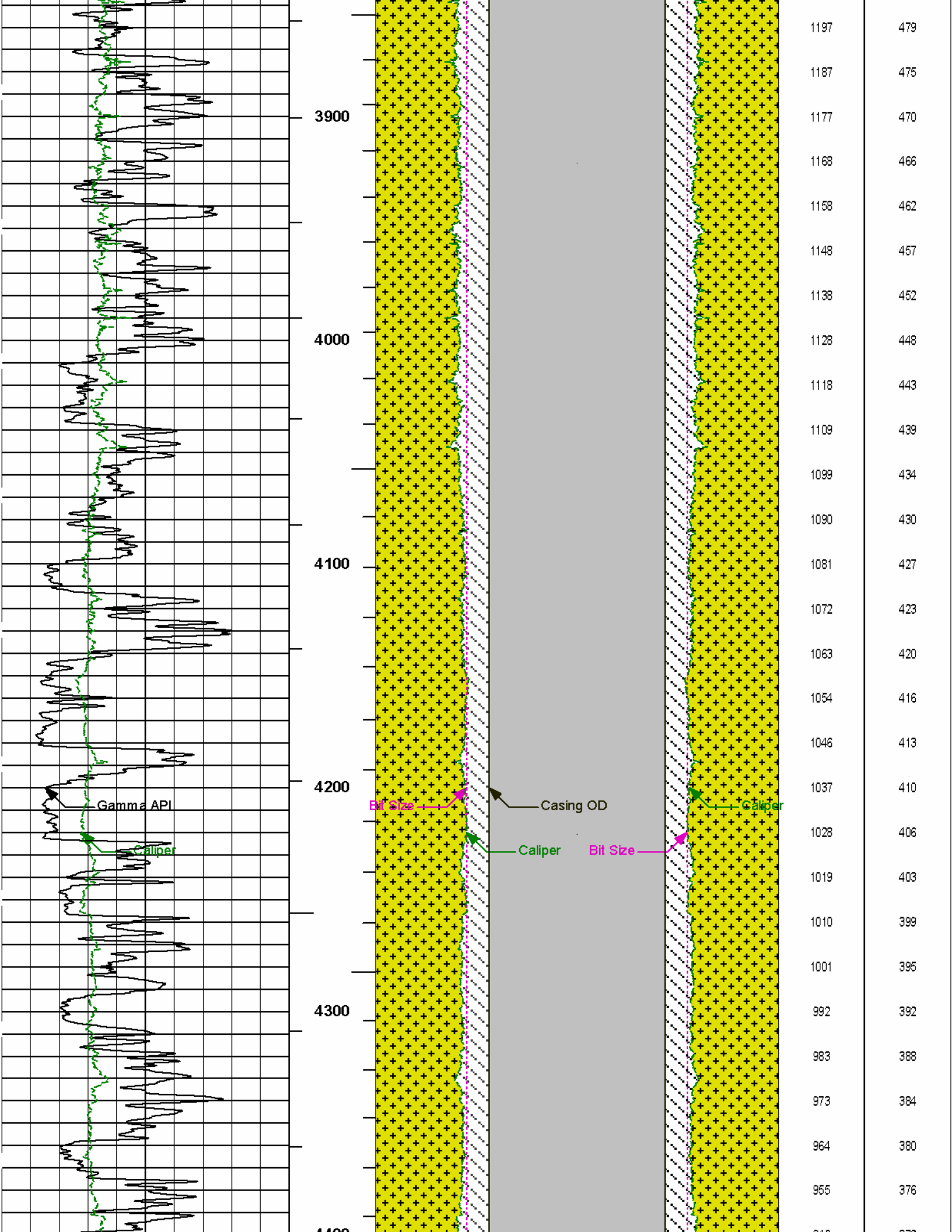


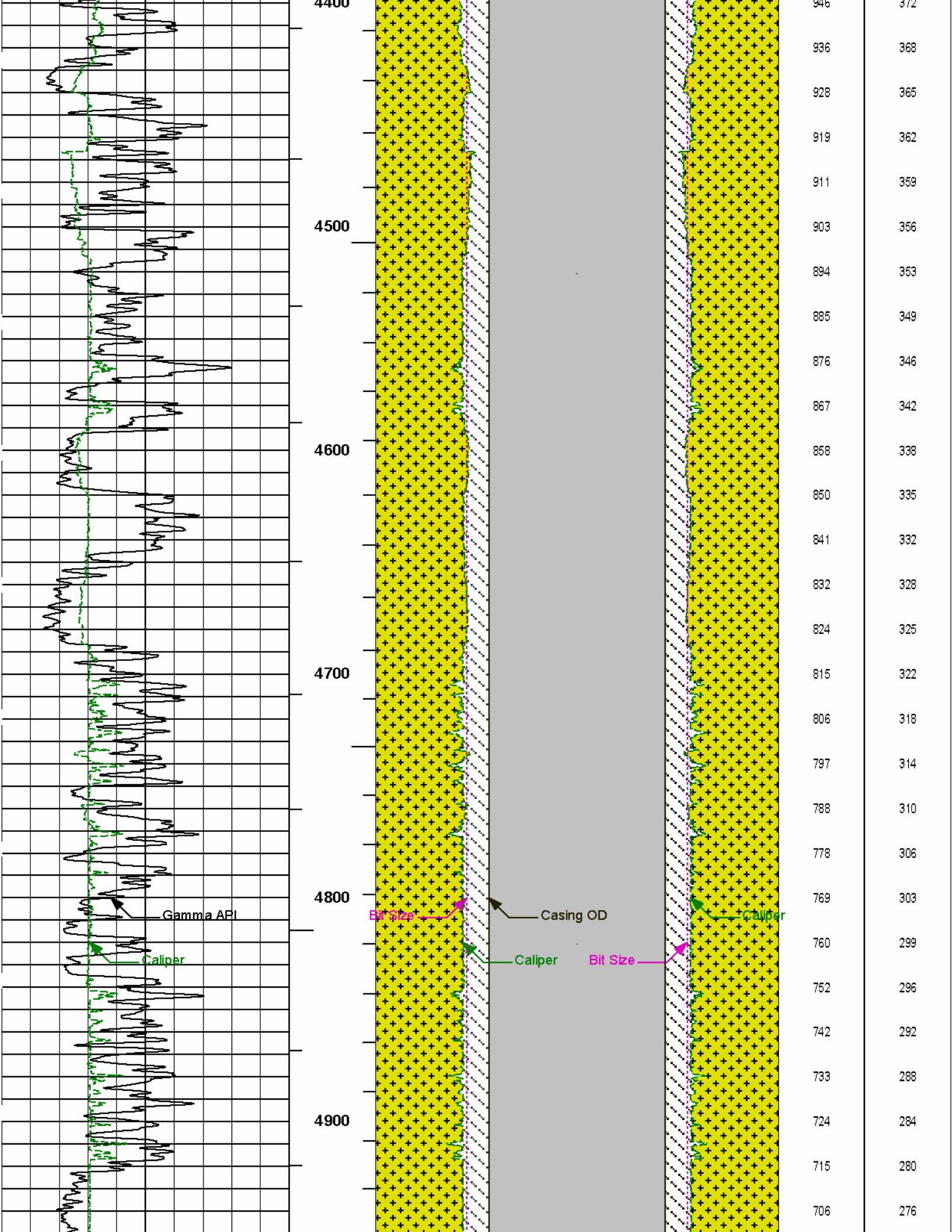


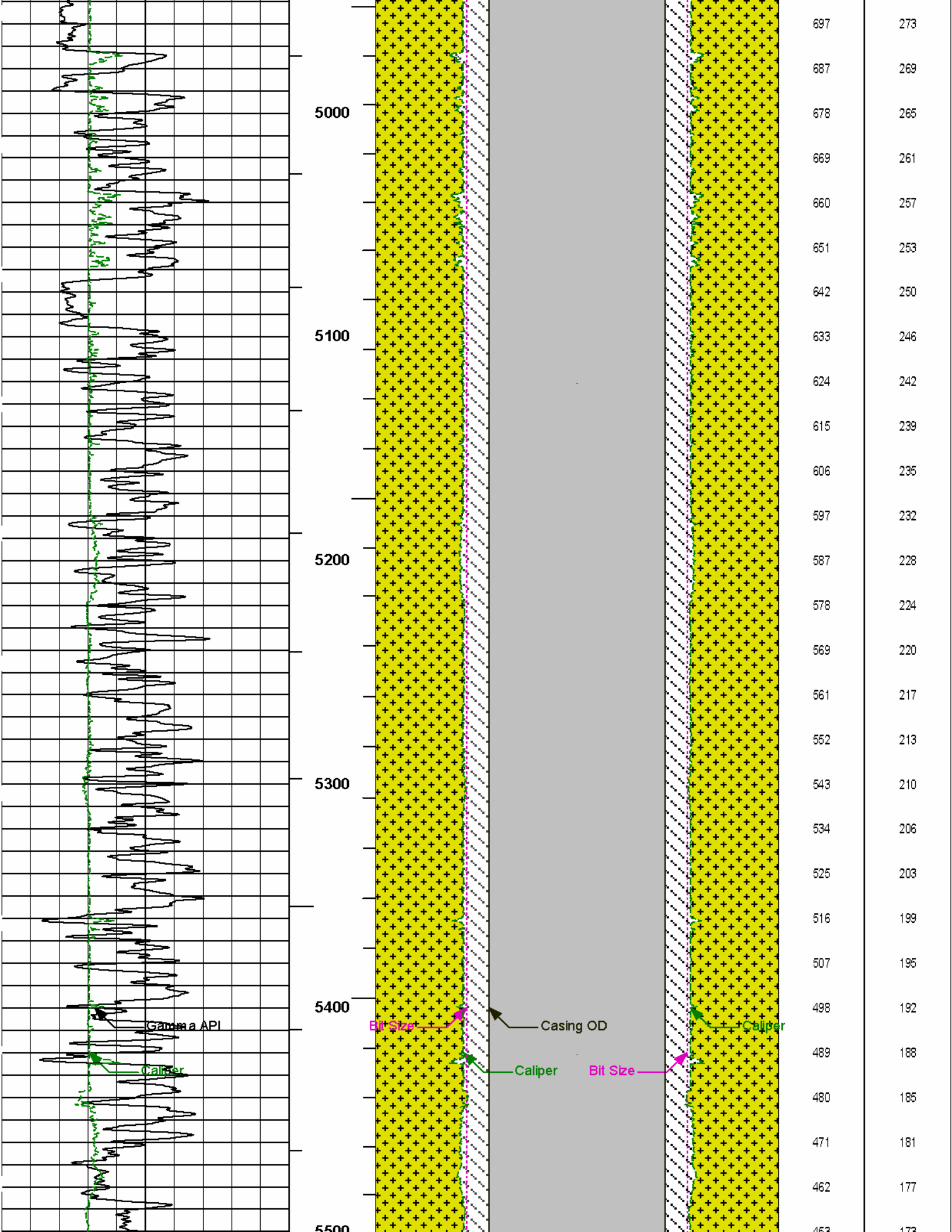


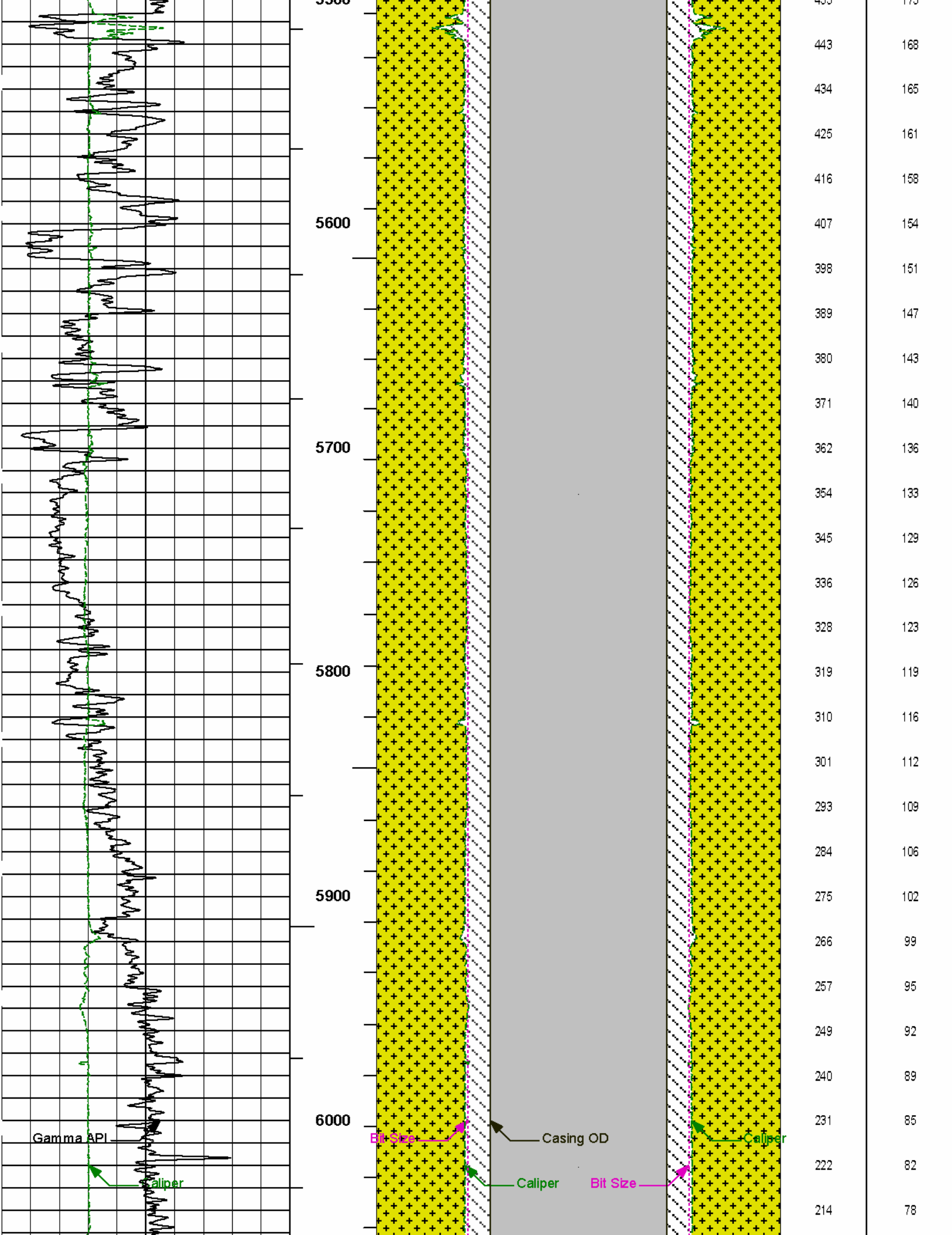












	AHVT	16	Bit Size	0 0	Bit Size	16
			inches		inches	
<div><div>HALLIBURTON</div><div>Plot Time: 05-Oct-11 14:35:09 Plot Range: 1521 ft to 6546.92 ft Data: LARA_HAWX19_13A\Well Based\MAIN" Plot File: \\BHWIQ_BHV_SDL_RM</div></div>						
AHV USES 7" CASING						
<div><div>COMPANY</div><div>LARAMIE ENERGY</div></div> <div><div>WELL</div><div>HAWXHURST 19-13A</div></div> <div><div>FIELD</div><div>BRUSH CREEK</div></div> <div><div>COUNTY</div><div>MESA</div><div>STATE</div><div>CO</div></div>						
HALLIBURTON			BOREHOLE VOLUME PLOT			