

---

# **CHEVRON - MID-CONTINENT EBIZ**

---

**SKR 698-09-AV-22  
SKINNER RIDGE  
Garfield County , Colorado**

## **Cement Production Casing** **17-Apr-2009**

### **Job Site Documents**

## The Road to Excellence Starts with Safety

Sold To #: 338668	Ship To #: 2713365	Quote #:	Sales Order #: 6621027
Customer: CHEVRON - MID-CONTINENT EBIZ	Customer Rep: Morgan, Randy		
Well Name: SKR	Well #: 698-09-AV-22	API/UWI #:	
Field: SKINNER RIDGE	City (SAP): PARACHUTE	County/Parish: Garfield	State: Colorado
Contractor: H&P 318	Rig/Platform Name/Num: H&P 318		
Job Purpose: Cement Production Casing			
Well Type: Development Well	Job Type: Cement Production Casing		
Sales Person: HARTLEY, RICHARD	Srvc Supervisor: HONE, AARON	MBU ID Emp #:	381285

## Job Personnel

HES Emp Name	Exp Hrs	Emp #	HES Emp Name	Exp Hrs	Emp #	HES Emp Name	Exp Hrs	Emp #
BRUN, JUSTIN M	7	459269	CHRISTOFFERSON, JUSTIN Wayne	7	435308	FEUERBORN, JOHN William	7	381677
HONE, AARON D	7	381285	MILLER, KEVIN Paul	7	443040	SALAZAR, PAUL Omar	7	445614
TALAROVICH, JEREMY Jay	7	425449	ZUMWALT, ORVILLE Raymond	7	398157			

## Equipment

HES Unit #	Distance-1 way	HES Unit #	Distance-1 way	HES Unit #	Distance-1 way	HES Unit #	Distance-1 way
10565341	60 mile	10724583	60 mile	10804487	60 mile	10829464	60 mile
10857016	60 mile	10872113	60 mile	10938658	60 mile	10951251	60 mile
11021972	60 mile	11027039	60 mile	11057895	60 mile	11165212	60 mile

## Job Hours

Date	On Location Hours	Operating Hours	Date	On Location Hours	Operating Hours	Date	On Location Hours	Operating Hours
4/17/09	7	5.5						
TOTAL								

Total is the sum of each column separately

## Job

Formation Name	Formation Depth (MD)	Top	Bottom	Form Type	Job depth MD	Job Depth TVD	Water Depth	Perforation Depth (MD)	From	To
				BHST	6750. ft	6750 ft				
							Wk Ht Above Floor			
							3. ft			

## Job Times

Date	Time	Time Zone
17 - Apr - 2009	08:00	MST
17 - Apr - 2009	12:30	MST
17 - Apr - 2009	16:11	MST
17 - Apr - 2009	17:34	MST
17 - Apr - 2009	19:30	MST

## Well Data

Description	New / Used	Max pressure psig	Size in	ID in	Weight lbm/ft	Thread	Grade	Top MD ft	Bottom MD ft	Top TVD ft	Bottom TVD ft
-------------	------------	-------------------	---------	-------	---------------	--------	-------	-----------	--------------	------------	---------------

Sales/Rental/3<sup>rd</sup> Party (HES)

Description	Qty	Qty uom	Depth	Supplier
PLUG,CMTG, TOP, 4 1/2, HWE, 3.65 MIN/4.14 MA	1	EA		
PORT. DAS W/CEMWIN; ACQUIRE W/HES, ZI	1	JOB		
ADC (AUTO DENSITY CTRL) SYS, /JOB, ZI	1	JOB		

## Tools and Accessories

Type	Size	Qty	Make	Depth	Type	Size	Qty	Make	Depth	Type	Size	Qty	Make
Guide Shoe					Packer					Top Plug	4.5	1	
Float Shoe					Bridge Plug					Bottom Plug			
Float Collar					Retainer					SSR plug set			
Insert Float										Plug Container	4.5	1	
Stage Tool										Centralizers			

## Miscellaneous Materials

Gelling Agt	Conc	Surfactant	Conc	Acid Type	Qty	Conc	%
Treatment Fld	Conc	Inhibitor	Conc	Sand Type	Size	Qty	



Fluid Data									
Stage/Plug #: 1									
Fluid #	Stage Type	Fluid Name	Qty	Qty uom	Mixing Density lbm/gal	Yield ft <sup>3</sup> /sk	Mix Fluid Gal/sk	Rate bbl/min	Total Mix Fluid Gal/sk
1	Dyed Polyflake Spacer		50.00	bbl	8.33	.0	.0	.0	
2	Lead Cement	VARICEM (TM) CEMENT (452009)	410.0	sacks	12.8	1.61	7.31	6.0	7.7
7.704 Gal		FRESH WATER							
3	Tail Cement	VARICEM (TM) CEMENT (452009)	660.0	sacks	13.2	1.47	6.32	6.0	
4	KCL DISPLACEMENT		103.3	bbl	8.4	.0	.0	.0	
Calculated Values		Pressures		Volumes					
Displacement	103.3	Shut In: Instant		Lost Returns	0	Cement Slurry	290.4	Pad	
Top Of Cement		5 Min		Cement Returns	0	Actual Displacement	103.3	Treatment	
Frac Gradient		15 Min		Spacers	50	Load and Breakdown		Total Job	
Rates									
Circulating	9.6	Mixing	7	Displacement	8	Avg. Job	8		
Cement Left In Pipe	Amount	47.39 ft	Reason	Shoe Joint					
Frac Ring # 1 @	ID	Frac ring # 2 @	ID	Frac Ring # 3 @	ID	Frac Ring # 4 @	ID		
The Information Stated Herein Is Correct				Customer Representative Signature					

*The Road to Excellence Starts with Safety*

Sold To #: 338668	Ship To #: 2713365	Quote #:	Sales Order #: 6621027
Customer: CHEVRON - MID-CONTINENT EBIZ		Customer Rep: Morgan, Randy	
Well Name: SKR	Well #: 698-09-AV-22	API/UWI #:	
Field: SKINNER RIDGE	City (SAP): PARACHUTE	County/Parish: Garfield	State: Colorado
Legal Description:			
Lat:		Long:	
Contractor: H&P 318		Rig/Platform Name/Num: H&P 318	
Job Purpose: Cement Production Casing		Ticket Amount:	
Well Type: Development Well		Job Type: Cement Production Casing	
Sales Person: HARTLEY, RICHARD		Srvc Supervisor: HONE, AARON	MBU ID Emp #: 381285

Activity Description	Date/Time	Cht #	Rate bbl/min	Volume bbl		Pressure psig		Comments
				Stage	Total	Tubing	Casing	
Call Out	04/17/2009 08:00							
Pre-Convoy Safety Meeting	04/17/2009 10:20							JOHN FEUERBORN ASSIGNED AS SAFETY OBSERVER.
Crew Leave Yard	04/17/2009 10:30							
Arrive At Loc	04/17/2009 12:30							RIG RUNNING CASING UPON ARRIVAL.
Assessment Of Location Safety Meeting	04/17/2009 12:40							
Pre-Rig Up Safety Meeting	04/17/2009 12:50							
Rig-Up Equipment	04/17/2009 13:00							
Pre-Job Safety Meeting	04/17/2009 15:00							PLUG CONTAINER INSPECTED. STAR ZIP TIED.
Start Job	04/17/2009 16:11							HOLE- 7 7/8" TD-6750' CSG- 4 1/2" 11.6# N-80, TP- 6715' SJ- 47.39' MUD- 10.4, SURFACE- 8 5/8" 24# SET AT 1039'
Test Lines	04/17/2009 16:12							4500 PSI.
Pump Spacer	04/17/2009 16:13		7	50			760.0	PUMPED 30 BBLS OF H2O, LAST 20 BBLS H2O, 10# POLYFLAKE, RED DYE
Pump Lead Cement	04/17/2009 16:24		7	117.6			1200.0	VARICEM 410 SKS, 12.8 PPG, 1.61 FT3/SK, 7.31 GAL/SK
Pump Tail Cement	04/17/2009 16:41		7	172.8			630.0	VARICEM 660 SKS, 13.2 PPG, 1.47 FT3/SK, 6.32 GAL/SK

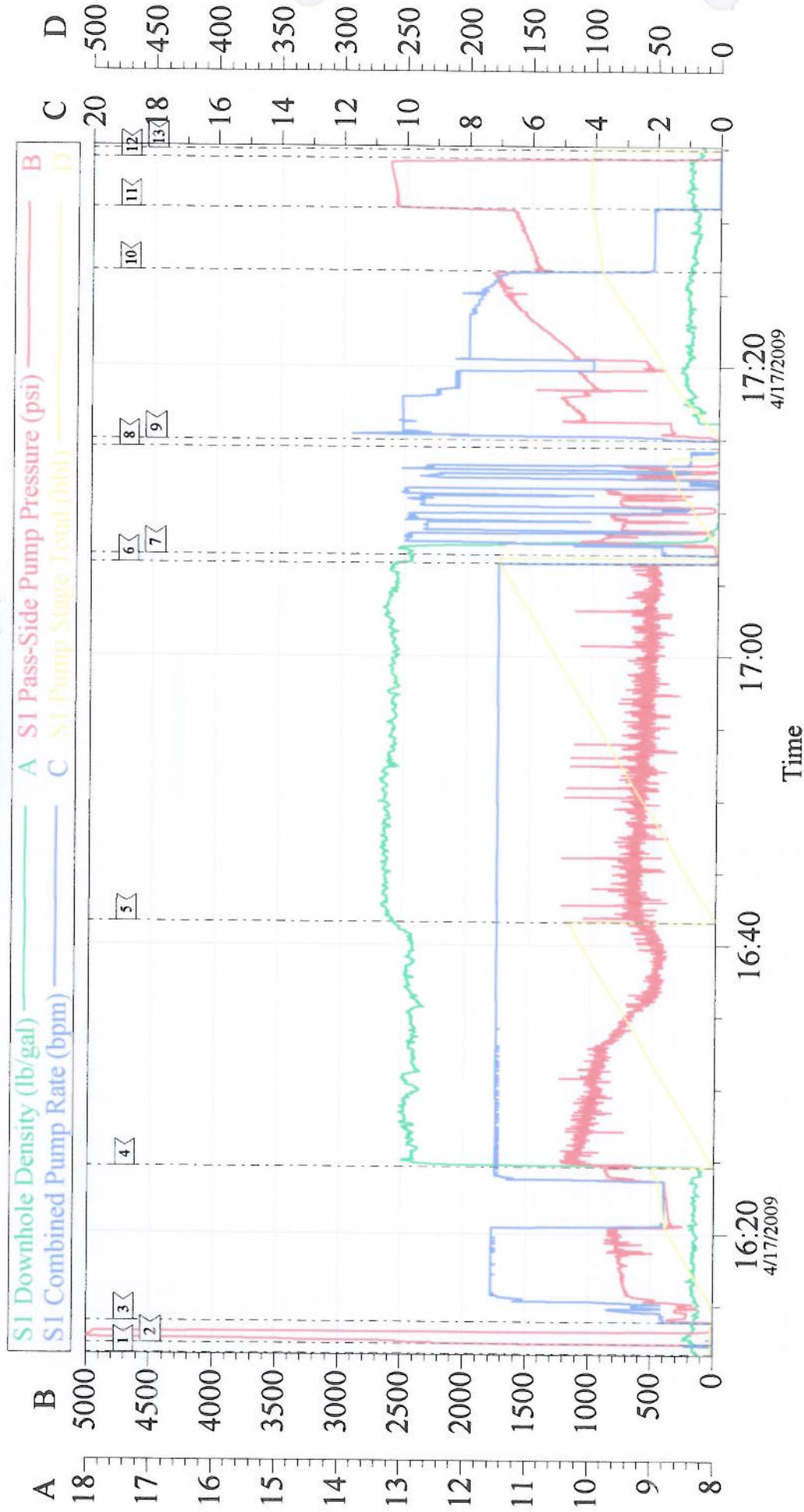


## Cementing Job Log

Activity Description	Date/Time	Cht #	Rate bbl/ min	Volume bbl		Pressure psig		Comments
				Stage	Total	Tubing	Casing	
Shutdown	04/17/2009 17:06							
Clean Lines	04/17/2009 17:07		10	30			1100. 0	H2O
Drop Top Plug	04/17/2009 17:14							PLUG AWAY
Pump Displacement	04/17/2009 17:14		10	103.3			1200. 0	H2O, KCL
Slow Rate	04/17/2009 17:26		2	93			1450. 0	POLYFLAKE AND DYE BACK TO SURFACE, NO CEMENT.
Bump Plug	04/17/2009 17:30		2	103.3			1650. 0	HELD TO 2568 PSI.
Check Floats	04/17/2009 17:34							FLOATS HELD. 1 BBL BACK TO TRUCK
End Job	04/17/2009 17:34							GOOD RETURNS THROUGHOUT JOB.
Pre-Rig Down Safety Meeting	04/17/2009 17:40							
Rig-Down Equipment	04/17/2009 17:50							
Pre-Convoy Safety Meeting	04/17/2009 19:20							
Crew Leave Location	04/17/2009 19:30							THANK YOU FOR USING HALLIBURTON.

# CHEVRON

## 4 1/2" PRODUCTION



Customer:  
Well Description:  
Company Rep:

Job Date: 17-Apr-2009  
Job Type: Cement Supervisor:

Sales Order #: 6621027  
ADC Used:  
Elite # / Operator: