
CHEVRON - MID-CONTINENT EBIZ

**SKR 698-09-AV-22
SKINNER RIDGE
Garfield County , Colorado**

Cement Surface Casing
22-Mar-2009

Job Site Documents

The Road to Excellence Starts with Safety

Sold To #: 338668		Ship To #: 2713365		Quote #:		Sales Order #: 6576805	
Customer: CHEVRON - MID-CONTINENT EBIZ				Customer Rep: TATUM, ELMER			
Well Name: SKR		Well #: 698-09-AV-22		API/UWI #: 05-045-17282			
Field: SKINNER RIDGE		City (SAP): PARACHUTE		County/Parish: Garfield		State: Colorado	
Lat: N 39.551 deg. OR N 39 deg. 33 min. 4.082 secs.				Long: W 108.33 deg. OR W -109 deg. 40 min. 12.41 secs.			
Contractor: H&P 318		Rig/Platform Name/Num: H&P318					
Job Purpose: Cement Surface Casing							
Well Type: Development Well				Job Type: Cement Surface Casing			
Sales Person: DUNNING, DUSTIN				Srv Supervisor: ANDREWS, ANTHONY		MBU ID Emp #: 321604	

Job Personnel								
HES Emp Name	Exp Hrs	Emp #	HES Emp Name	Exp Hrs	Emp #	HES Emp Name	Exp Hrs	Emp #
ANDREWS, ANTHONY Michael		321604	KUKUS, CRAIG A		369124	ROCKERT, CHRISTOPHER Michael		332914
TRIPLETT, MICHEAL Anthony		447908	WILKINSON, JAMES V		459794			

Equipment							
HES Unit #	Distance-1 way	HES Unit #	Distance-1 way	HES Unit #	Distance-1 way	HES Unit #	Distance-1 way

Job Hours								
Date	On Location Hours	Operating Hours	Date	On Location Hours	Operating Hours	Date	On Location Hours	Operating Hours
3/21/09	4	2	3/22/09	2.5	1.5			
TOTAL		Total is the sum of each column separately						

Job				Job Times			
Formation Name	Formation Depth (MD)	Top	Bottom	Called Out	Date	Time	Time Zone
Form Type			BHST	On Location	21 - Mar - 2009	17:30	MST
Job depth MD	1050. ft		Job Depth TVD	1050. ft	21 - Mar - 2009	20:30	MST
Water Depth			Wk Ht Above Floor	4. ft	22 - Mar - 2009	00:08	MST
Perforation Depth (MD)	From		To	Job Completed	22 - Mar - 2009	01:01	MST
				Departed Loc	22 - Mar - 2009	02:30	MST

Well Data											
Description	New / Used	Max pressure psig	Size in	ID in	Weight lbm/ft	Thread	Grade	Top MD ft	Bottom MD ft	Top TVD ft	Bottom TVD ft

Sales/Rental/3 rd Party (HES)				
Description	Qty	Qty uom	Depth	Supplier
PLUG,CMTG,TOP,8 5/8,HWE,7.20 MIN/8.09 MA	1	EA		
PORT. DAS W/CEMWIN;ACQUIRE W/HES, ZI	1	JOB		
ADC (AUTO DENSITY CTRL) SYS, /JOB,ZI	1	JOB		

Tools and Accessories													
Type	Size	Qty	Make	Depth	Type	Size	Qty	Make	Depth	Type	Size	Qty	Make
Guide Shoe					Packer					Top Plug			
Float Shoe					Bridge Plug					Bottom Plug			
Float Collar					Retainer					SSR plug set			
Insert Float										Plug Container			
Stage Tool										Centralizers			

Miscellaneous Materials											
Gelling Agt	Conc	Surfactant	Conc	Acid Type	Qty	Conc	%				
Treatment Fld	Conc	Inhibitor	Conc	Sand Type	Size	Qty					

HALLIBURTON**Cementing Job Summary**

Fluid Data									
Stage/Plug #: 1									
Fluid #	Stage Type	Fluid Name	Qty	Qty uom	Mixing Density lbm/gal	Yield ft ³ /sk	Mix Fluid Gal/sk	Rate bbl/min	Total Mix Fluid Gal/sk
1	PolyFlake Dyed Spacer		50	Bbl	.	.0	.0	.0	
2	Lead Cement	VERSACEM (TM) SYSTEM (452010)	140	Sacks	12.3	2.38	13.75		
3	Tail Cement	VERSACEM (TM) SYSTEM (452010)	155	sacks	12.8	2.11	11.75		
4	Fresh Water Displacement		63.1	bbl	.	.0	.0	.0	
Calculated Values		Pressures		Volumes					
Displacement	63.1	Shut In: Instant		Lost Returns	N	Cement Slurry	117.5	Pad	
Top Of Cement	SURFACE	5 Min		Cement Returns	35	Actual Displacement	63.1	Treatment	
Frac Gradient		15 Min		Spacers	50	Load and Breakdown		Total Job	230.6
Rates									
Circulating	RIG	Mixing	6	Displacement	8-2	Avg. Job	7		
Cement Left In Pipe	Amount	44.29 ft	Reason	Shoe Joint					
Frac Ring # 1 @	ID	Frac ring # 2 @	ID	Frac Ring # 3 @	ID	Frac Ring # 4 @	ID		
The Information Stated Herein Is Correct				Customer Representative Signature					

Cementing Job Log

The Road to Excellence Starts with Safety

Sold To #: 338668	Ship To #: 2713365	Quote #:	Sales Order #: 6576805
Customer: CHEVRON - MID-CONTINENT EBIZ		Customer Rep: TATUM, ELMER	
Well Name: SKR	Well #: 698-09-AV-22	API/UWI #: 05-045-17282	
Field: SKINNER RIDGE	City (SAP): PARACHUTE	County/Parish: Garfield	State: Colorado
Legal Description:			
Lat: N 39.551 deg. OR N 39 deg. 33 min. 4.082 secs.		Long: W 108.33 deg. OR W -109 deg. 40 min. 12.41 secs.	
Contractor: H&P 318	Rig/Platform Name/Num: H&P318		
Job Purpose: Cement Surface Casing		Ticket Amount:	
Well Type: Development Well	Job Type: Cement Surface Casing		
Sales Person: DUNNING, DUSTIN	Srv Supervisor: ANDREWS, ANTHONY	MBU ID Emp #: 321604	

Activity Description	Date/Time	Cht #	Rate bbl/min	Volume bbl		Pressure psig		Comments
				Stage	Total	Tubing	Casing	
Call Out	03/21/2009 17:30							
Pre-Convoy Safety Meeting	03/21/2009 18:45							
Crew Leave Yard	03/21/2009 19:00							
Arrive At Loc	03/21/2009 20:30							
Assessment Of Location Safety Meeting	03/21/2009 20:35							
Other	03/21/2009 20:40							SPOT EQUIPMENT
Pre-Rig Up Safety Meeting	03/21/2009 20:45							
Rig-Up Equipment	03/21/2009 20:50							
Pre-Job Safety Meeting	03/21/2009 23:40							
Start Job	03/22/2009 00:08							TD: 1048 TP: 1036 SJ: 44.29 MW: 9.0 PPG 8 5/8" 24#/FT CASING
Test Lines	03/22/2009 00:08							2000 PSI TEST
Pump Spacer	03/22/2009 00:10		4	50			110.0	30 BBL FRESH 20 POLY AND DYE
Pump Lead Cement	03/22/2009 00:22		6	59.3			245.0	140 SKS @ 12.3 PPG 2.38 YLD
Pump Tail Cement	03/22/2009 00:34		6	58.2			284.0	155 SKS @ 12.8 PPG 2.11 YLD
Shutdown	03/22/2009 00:45							
Drop Plug	03/22/2009 00:45							
Pump Displacement	03/22/2009 00:46		8		63.1		166.0	

Sold To #: 338668

Ship To #: 2713365

Quote #:

Sales Order #:

6576805

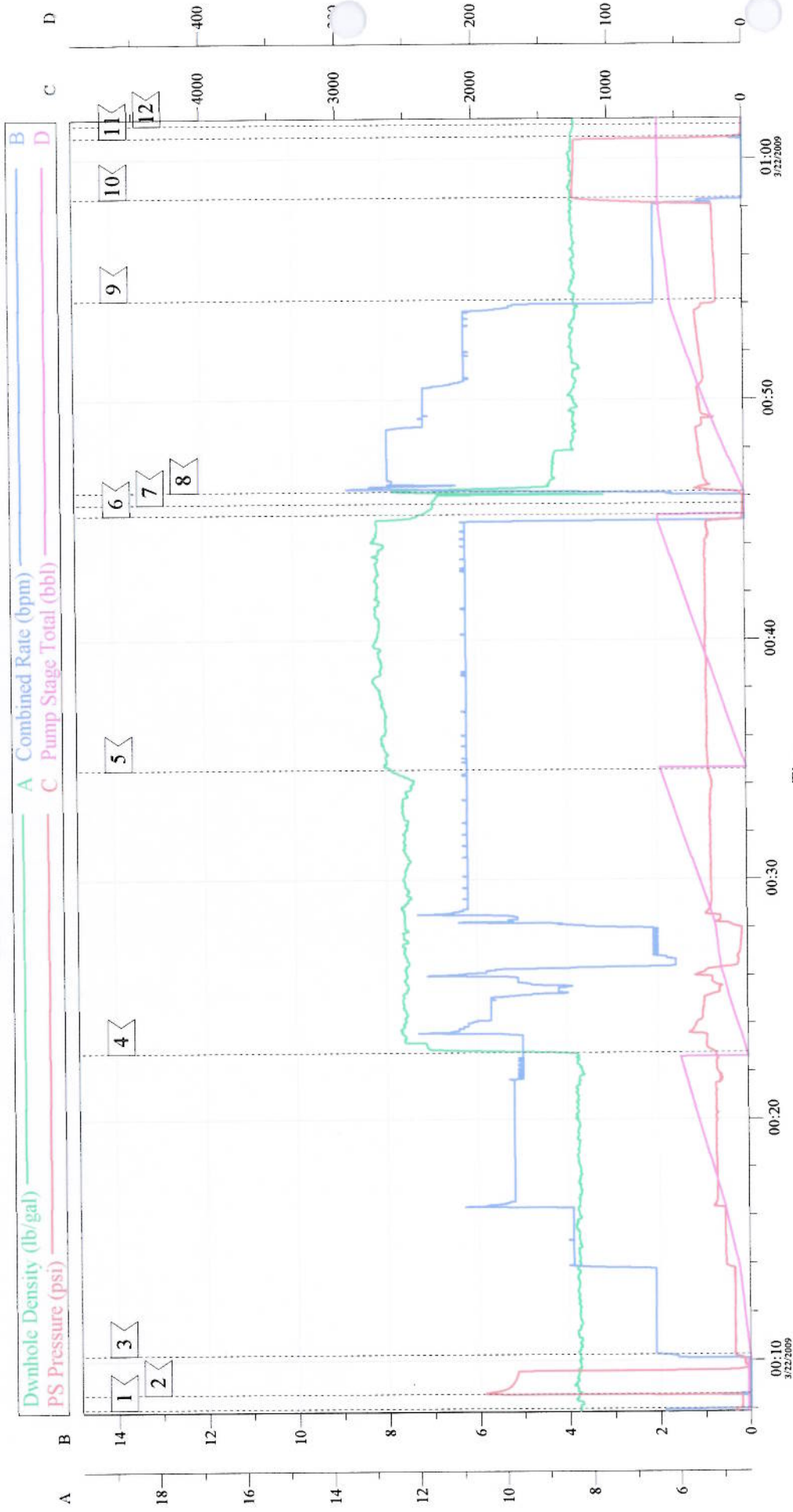
SUMMIT Version: 7.20.130

Sundav. March 22. 2009 01:33:00

Cementing Job Log

Activity Description	Date/Time	Cht #	Rate bbl/min	Volume bbl		Pressure psig		Comments
				Stage	Total	Tubing	Casing	
Slow Rate	03/22/2009 00:54		2	53			201.0	
Bump Plug	03/22/2009 00:58		2	63.1			1256.0	
Check Floats	03/22/2009 01:00							
End Job	03/22/2009 01:01							GOOD CIRCULATION THROUGHOUT JOB. PIPE WAS LEFT STATIC/ HELD DOWN BY OP DRIVE THROUGHOUT JOB. PLUG BUMPED AT CALCULATED DISPLACEMENT. FLOATS HELD.
Post-Job Safety Meeting (Pre Rig-Down)	03/22/2009 01:15							NO ADD HOURS CHARGED. CRAIG KUKUS WAS DESIGNATED SAFETY OBSERVER FOR JOB.
Rig-Down Equipment	03/22/2009 01:30							
Pre-Convoy Safety Meeting	03/22/2009 02:25							
Crew Leave Location	03/22/2009 02:30							THANK YOU FOR CHOOSING HALLIBURTON CEMENTING OF GRAND JUNCTION, COLORADO ANTHONY ANDREWS AND CREW

HP 318: 8 5/8" SURFACE



Intersection		Intersection		Intersection		Intersection	
Intersection	PP	Intersection	PP	Intersection	PP	Intersection	PP
1 START JOB	00:08:01	2 TEST LINES	00:08:38	3 PUMP SPACER	00:10:15	4 PUMP LEAD CEMENT	00:10:15
4 PUMP LEAD CEMENT	00:22:48	5 PUMP TAIL CEMENT	00:34:36	6 SHUTDOWN	00:45:14	7 DROP PLUG	00:54:09
7 DROP PLUG	00:45:41	8 PUMP DISPLACEMENT	00:46:11	9 SLOW RATE	00:54:09	10 BUMP PLUG	01:01:25
10 BUMP PLUG	00:58:23	11 CHECK FLOATS	01:00:55	12 END JOB	01:01:25		

Customer: CHEVRON	Job Date: 3/21/09	Ticket #: 6578605
Lease: SKR	Supervisor: ANTHONY ANDREWS	ADC Used?: YES
Well #: 698-09-AV-22	Pump Truck: 10871245	Company Rep: ELMER TATUM

CemWin v1.7.2
22-Mar-09 01:18