
BILL BARRETT CORPORATION

**KAUFMAN 21B-25-692
MAMM CREEK
Garfield County , Colorado**

Cement Surface Casing
08-Dec-2011

Post Job Report

Sold To #: 343492	Ship To #: 2894961	Quote #:	Sales Order #: 9112147
Customer: BILL BARRETT CORPORATION E-BILL		Customer Rep: Lauer, Casey	
Well Name: KAUFMAN	Well #: 21B-25-692	API/UWI #: 05-045-21141	
Field: MAMM CREEK	City (SAP): UNKNOWN	County/Parish: Garfield	State: Colorado
Lat: N 39.502 deg. OR N 39 deg. 30 min. 8.842 secs.		Long: W 107.618 deg. OR W -108 deg. 22 min. 53.89 secs.	
Contractor: PROPETRO		Rig/Platform Name/Num: PROPETRO	
Job Purpose: Cement Surface Casing			
Well Type: Development Well		Job Type: Cement Surface Casing	
Sales Person: FLING, MATTHEW		Srvs Supervisor: PHILLIPS, MARK	MBU ID Emp #: 445272

HES Emp Name	Exp Hrs	Emp #	HES Emp Name	Exp Hrs	Emp #	HES Emp Name	Exp Hrs	Emp #
JENSEN, JESSE Robert	5	478774	KEANE, JOHN Donovan	5	486519	PHILLIPS, MARK Bejar	5	445272

HES Unit #	Distance-1 way	HES Unit #	Distance-1 way	HES Unit #	Distance-1 way	HES Unit #	Distance-1 way
10784064	120 mile	11006314	120 mile	11259884	120 mile	11360871	120 mile
11542767	120 mile						

Date	<i>On Location Hours</i>	Operating Hours	Date	<i>On Location Hours</i>	Operating Hours	Date	<i>On Location Hours</i>	Operating Hours
12-08-2011	5	1						

[illegible]

Formation Name					Date				Time		Time Zone	
Formation Depth (MD)		Top			Bottom				Called Out	08 - Dec - 2011	10:00	MST
Form Type			BHST						On Location	08 - Dec - 2011	14:00	MST
Job depth MD		745. ft		Job Depth TVD		745. ft		Job Started	08 - Dec - 2011	17:21	MST	
Water Depth				Wk Ht Above Floor		3. ft		Job Completed	08 - Dec - 2011	18:06	MST	
Perforation Depth (MD)		From			To			Departed Loc				

Well Data											
Description	New / Used	Max pressure psig	Size in	ID in	Weight lbm/ft	Thread	Grade	Top MD ft	Bottom MD ft	Top TVD ft	Bottom TVD ft
OPEN HOLE				12.375				.	745.		
SURFACE CASING	Unknown		9.625	8.921	36.		J-55	.	725.1		

Description	Qty	Qty uom	Depth	Supplier
PLUG,CMTG, TOP,9 5/8,HWE,8.16 MIN/9.06 MA	1	EA		
R/A DENSOMETER W/CHART RECORDER,/JOB,ZI	1	JOB		
ADC (AUTO DENSITY CTRL) SYS, /JOB,ZI	1	JOB		
PORT. DATA ACQUIS. W/OPTICEM RT W/HES	1	EA		

Type	Size	Qty	Make	Depth	Type	Size	Qty	Make	Depth	Type	Size	Qty	Make
Guide Shoe				725.07	Packer					Top Plug	9.625	1	HES
Float Shoe					Bridge Plug					Bottom Plug			
Float Collar				679.67	Retainer					SSR plug set			
Insert Float										Plug Container	9.625	1	HES
Stage Tool										Centralizers			

Gelling Agt	Conc	Surfactant	Conc	Acid Type	Qty	Conc	%
Treatment Fld	Conc	Inhibitor	Conc	Sand Type	Size	Qty	

Fluid Data									
Stage/Plug #: 1									
Fluid #	Stage Type	Fluid Name	Qty	Qty uom	Mixing Density lbm/gal	Yield ft ³ /sk	Mix Fluid Gal/sk	Rate bbl/min	Total Mix Fluid Gal/sk
1	WATER SPACER		20.00	bbl	8.34	.0	.0	6.0	
2	Lead Cement	VERSACEM (TM) SYSTEM (452010)	120.0	sacks	12.3	2.38	13.77	6.0	13.77
	0.25 lbm	POLY-E-FLAKE (101216940)							
	13.77 Gal	FRESH WATER							
3	Tail Cement	SWIFTCES (TM) SYSTEM (452990)	120.0	sacks	14.2	1.43	6.85	6.0	6.85
	0.25 lbm	POLY-E-FLAKE (101216940)							
	6.85 Gal	FRESH WATER							
4	DISPLACEMENT		52.5	bbl	8.4			6.0	
Calculated Values		Pressures		Volumes					
Displacement	52.5	Shut In: Instant		Lost Returns	0	Cement Slurry	81	Pad	
Top Of Cement	SURFACE	5 Min		Cement Returns	32	Actual Displacement	52.5	Treatment	
Frac Gradient		15 Min		Spacers		Load and Breakdown		Total Job	241
Rates									
Circulating	0	Mixing	6	Displacement	6	Avg. Job	6		
Cement Left In Pipe	Amount	45.4 ft	Reason	Shoe Joint					
Frac Ring # 1 @	ID	Frac ring # 2 @	ID	Frac Ring # 3 @	ID	Frac Ring # 4 @	ID		
The Information Stated Herein Is Correct				Customer Representative Signature					

The Road to Excellence Starts with Safety

Sold To #: 343492	Ship To #: 2894961	Quote #:	Sales Order #: 9112147
Customer: BILL BARRETT CORPORATION E-BILL		Customer Rep: Lauer, Casey	
Well Name: KAUFMAN		Well #: 21B-25-692	API/UWI #: 05-045-21141
Field: MAMM CREEK	City (SAP): UNKNOWN	County/Parish: Garfield	State: Colorado
Legal Description:			
Lat: N 39.502 deg. OR N 39 deg. 30 min. 8.842 secs.		Long: W 107.618 deg. OR W -108 deg. 22 min. 53.89 secs.	
Contractor: PROPETRO		Rig/Platform Name/Num: PROPETRO	
Job Purpose: Cement Surface Casing			Ticket Amount:
Well Type: Development Well		Job Type: Cement Surface Casing	
Sales Person: FLING, MATTHEW		Srv Supervisor: PHILLIPS, MARK	MBU ID Emp #: 445272

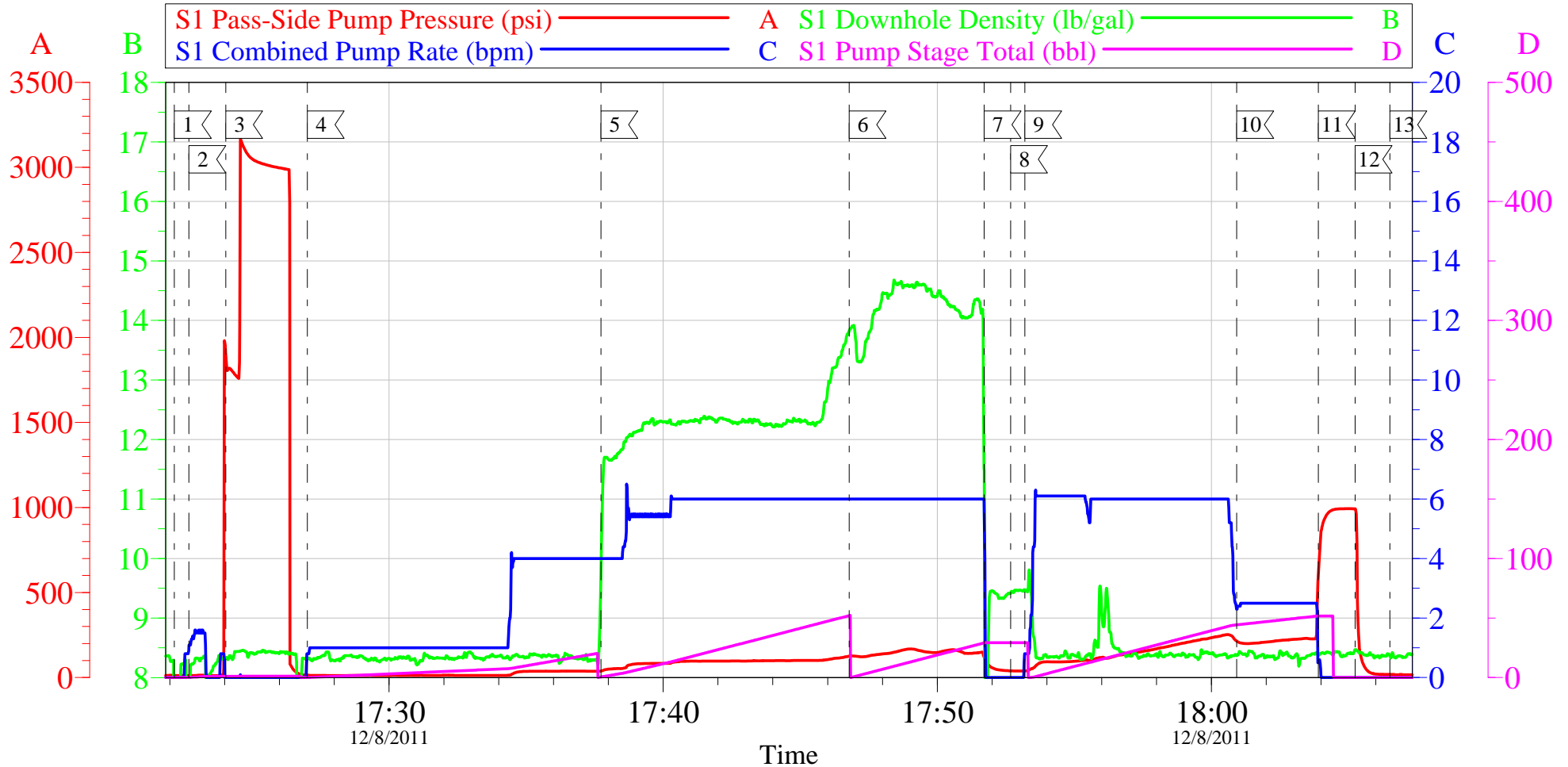
Activity Description	Date/Time	Cht #	Rate bbl/min	Volume bbl		Pressure psig		Comments
				Stage	Total	Tubing	Casing	
Call Out	12/08/2011 10:00							
Pre-Convoy Safety Meeting	12/08/2011 12:00							ALL HES EMPLOYEES
Arrive At Loc	12/08/2011 14:00							RIG CREW DRILLING
Assessment Of Location Safety Meeting	12/08/2011 14:20							ALL HES EMPLOYEES
Rig-Up Equipment	12/08/2011 16:20							1 HT-400 CEMENT PUMP, 1 660FT3 BULK TRUCK, 1 9.625" SCREW ON PLUG CONTAINER
Pre-Job Safety Meeting	12/08/2011 17:00							ALL HES EMPLOYEES, RIG CREW, COMPANY REP, 3RD PARTY VENDORS
Start Job	12/08/2011 17:21							TD:745.0 FT, TP:725.07 FT, SJ:45.4 FT, OPEN HOLE: 12.375" CASING: 9.625", J 55, 8RD, 36.0 LB/FT, RIG DRILLING WITH AIR.
Pump Water	12/08/2011 17:22		2	2			10.0	FRESH WATER
Pressure Test	12/08/2011 17:24		0.5			3000.0		
Pump Spacer 1	12/08/2011 17:27		4	20			20.0	FRESH WATER

Activity Description	Date/Time	Cht #	Rate bbl/min	Volume bbl		Pressure psig		Comments
				Stage	Total	Tubing	Casing	
Pump Lead Cement	12/08/2011 17:37		6	51			90.0	120SKS VERSACEM MIXED @ 12.3PPG, 2.38FT3/SK, 13.75GALS/SK, WEIGHED VIA PRESSURE BALANCED MUD SCALES, WET AND DRY SAMPLES SUBMITTED WATER RETURNS NOTED WITH 20 AWAY ON LEAD CMT.
Pump Tail Cement	12/08/2011 17:47		6	30.6			150.0	120SKS SWIFTCM MIXED @ 14.2PPG, 1.43FT3/SK, 6.88GALS/SK, WEIGHED VIA PRESSURE BALANCED MUD SCALES, WET AND DRY SAMPLES SUBMITTED, CMT RETURNS NOTED WITH 20 BBLS AWAY ON TAIL CMT.
Shutdown	12/08/2011 17:51							
Drop Plug	12/08/2011 17:53							PLUG LAUNCHED
Pump Displacement	12/08/2011 17:53		6	52.5			250.0	FRESH WATER
Cement Returns to Surface	12/08/2011 17:57		6	20			120.0	32 BBLS OF CMT RETURN TO SURFACE.
Slow Rate	12/08/2011 18:00		2	42			220.0	SLOW RATE 10BBL PRIOR TO CALCULATED DISPLACEMENT
Bump Plug	12/08/2011 18:03		2	52.5			900.0	PLUG LANDED
Check Floats	12/08/2011 18:05							FLOATS HELD
End Job	12/08/2011 18:06							THANK YOU FOR USING HALLIBURTON ENERGY SERVICES FROM MARK PHILLIPS AND CREW.

Activity Description	Date/Time	Cht #	Rate bbl/ min	Volume bbl		Pressure psig		Comments
				Stage	Total	Tubing	Casing	
Post-Job Safety Meeting (Pre Rig-Down)	12/08/2011 18:10							ALL HES EMPLOYEES
Rig-Down Equipment	12/08/2011 19:00							PUMP TRUCK AND LINE WILL BE BLOWN DOWN TO PREVENT FREEZING AFTER EACH JOB
Crew Leave Location	12/08/2011 19:01							CREW WILL BE STAYING ON LOCATION, BULK TRUCK DRIVER WILL BE ROUND TRIPPING FOR NEW BULK TRUCK POST EACH JOB.

BILL BARRETT KAUFMAN 21B-25-692

9.625" SURFACE



Local Event Log

1 START JOB	17:22:10	2 FILL LINES	17:22:42	3 PRESSURE TEST	17:24:02
4 H2O SPACER	17:27:01	5 LEAD CEMENT	17:37:44	6 TAIL CEMENT	17:46:47
7 SHUT DOWN	17:51:43	8 DROP PLUG	17:52:41	9 START DISPLACEMENT	17:53:12
10 SLOW RATE	18:00:56	11 BUMP PLUG	18:03:54	12 CHECK FLOATS	18:05:15
13 END JOB	18:06:31				

Customer: BILL BARRETT
Well Description: KAUFMAN 21B-25-692
Company Rep: CASEY LAUER

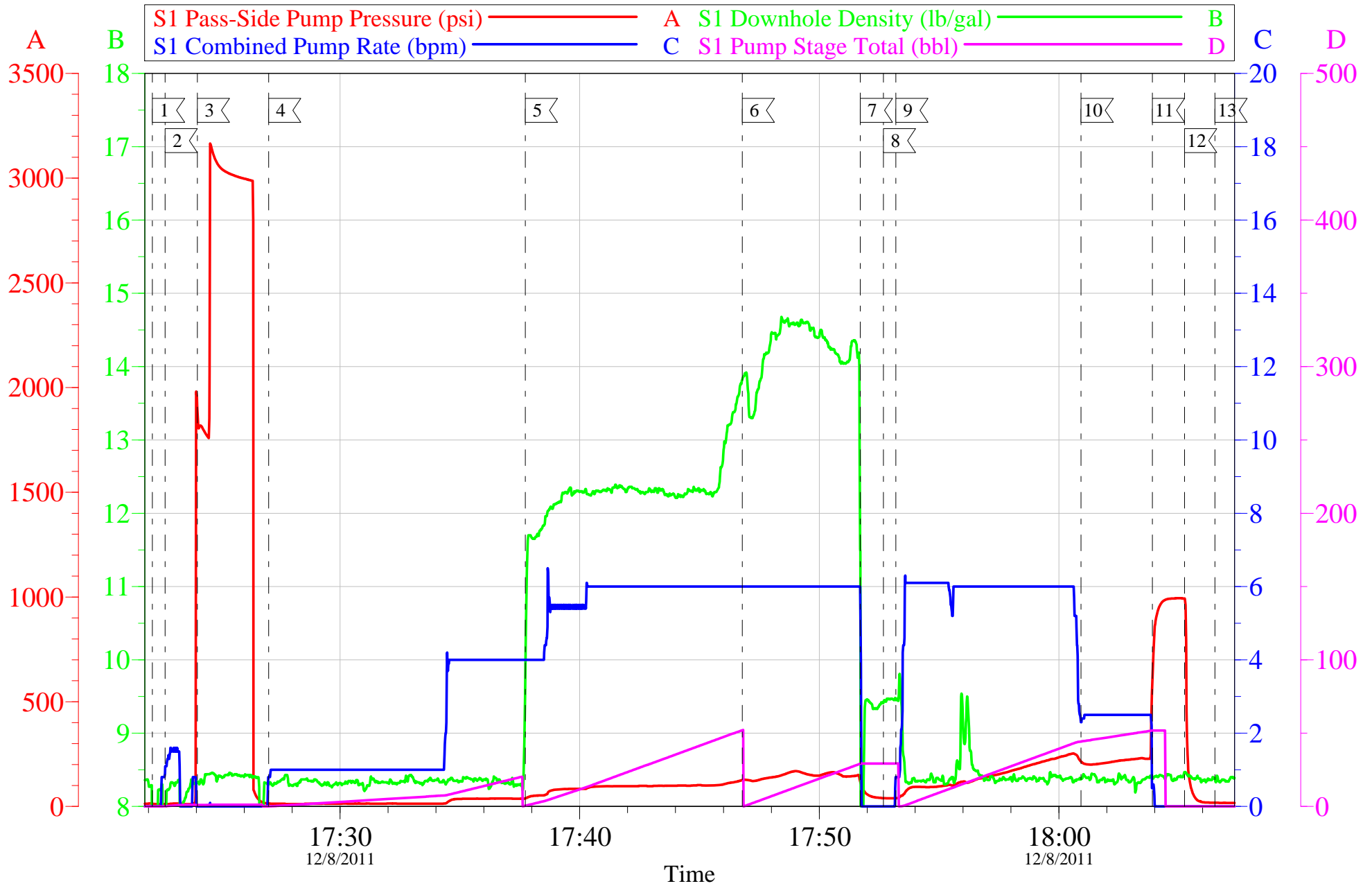
Job Date: 08-Dec-2011
Job Type: SURFACE
Cement Supervisor: MARK PHILLIPS

Sales Order #: 9112147
ADC Used: YES
ELITE 1 JESSE JENSEN

OptiCem v6.4.9
02-Feb-12 15:28

BILL BARRETT KAUFMAN 21B-25-692

9.625" SURFACE



Customer: BILL BARRETT
Well Description: KAUFMAN 21B-25-692
Company Rep: CASEY LAUER

Job Date: 08-Dec-2011
Job Type: SURFACE
Cement Supervisor: MARK PHILLIPS

Sales Order #: 9112147
ADC Used: YES
ELITE 1 JESSE JENSEN

OptiCem v6.4.9
02-Feb-12 15:28

HALLIBURTON

Water Analysis Report

Company: BBC

Submitted by: MARK PHILLIPS

Attention: LAB

Lease: KAUFMAN

Well #: 21B-25-692

Date: 12/8/2011

Date Rec.: 12/8/2011

S.O.#: 9112147

Job Type: SURFACE

Specific Gravity	<i>MAX</i>	<i>1</i>
pH	<i>8</i>	<i>7</i>
Potassium (K)	<i>5000</i>	<i>500</i> Mg / L
Calcium (Ca)	<i>500</i>	<i>250</i> Mg / L
Iron (FE2)	<i>300</i>	<i>0</i> Mg / L
Chlorides (Cl)	<i>3000</i>	<i>500</i> Mg / L
Sulfates (SO ₄)	<i>1500</i>	<i>200</i> Mg / L
Chlorine (Cl ₂)		<i>0</i> Mg / L
Temp	<i>40-80</i>	<i>41</i> Deg
Total Dissolved Solids		<i>970</i> Mg / L

Respectfully: MARK PHILLIPS

Title: CEMENTING SUPERVISOR

Location: Grand Junction, CO

NOTICE: This report is limited to the described sample tested. Any person using or relying on this report agrees that Halliburton shall not be liable for any loss or damage whether due to act or omission resulting from such report or

Sales Order #: 9112147	Line Item: 10	
Customer: BILL BARRETT CORPORATION E-BILL		Job Type (BOM): CMT SURFACE CASING BOM
Customer Rep./Phone: CASEY LAUER		API / UWI: (leave blank if unknown) 05-045-21141
Well Name: KAUFMAN		Well Number: 21B-25-692
Well Type: Development Well	Well Country: United States of America	
H2S Present: No	Well State: Colorado	Well County: Garfield

KEY PERFORMANCE INDICATORS

General	
Survey Conducted Date The date the survey was conducted	12/7/2011

Cementing KPI Survey	
Type of Job Select the type of job. (Cementing or Non-Cementing)	0
Select the Maximum Deviation range for this Job What is the highest deviation for the job you just completed? This may not be the maximum well deviation.	Vertical
Total Operating Time (hours) Total Operating Hours Including Rig-up, Pumping, Rig-down. Enter in decimal format.	2
HSE Incident, Accident, Injury HSE Incident, Accident, Injury. This should be recordable incidents only.	No
Was the job purpose achieved? Was the job delivered correctly as per customer agreed design?	Yes
Operating Hours (Pumping Hours) Total number of hours pumping fluid on this job. Enter in decimal format.	1
Customer Non-Productive Rig Time (hrs) Lost time due to Halliburton in the start, execution, or completion of an ordered service or product, or delays in a follow-on service. Enter in decimal format. 0 if none.	0
Type of Rig Classification Job Was Performed Type Of Rig (classification) Job Was Performed On	Drilling Rig (Portable)
Number Of JSAs Performed Number Of Jsas Performed	6
Number of Unplanned Shutdowns Unplanned shutdown is when injection stops for any period of time.	0
Was this a Primary Cement Job (Yes / No)	Yes

Sales Order #: 9112147	Line Item: 10	
Customer: BILL BARRETT CORPORATION E-BILL		Job Type (BOM): CMT SURFACE CASING BOM
Customer Rep./Phone: CASEY LAUER		API / UWI: (leave blank if unknown) 05-045-21141
Well Name: KAUFMAN		Well Number: 21B-25-692
Well Type: Development Well	Well Country: United States of America	
H2S Present: No	Well State: Colorado	Well County: Garfield

Primary Cement Job= Casing job, Liner job, or Tie-back job.	
Did We Run Wiper Plugs? Did We Run Top And Bottom Casing Wiper Plugs?	Top
Mixing Density of Job Stayed in Designed Density Range (0-100%) Density Range defined as +/- .20 ppg. Calculation: Total BBLs cement mixed at designed density divided by total BBLs of cement multiplied by 100	93
Was Automated Density Control Used? Was Automated Density Control (ADC) Used ?	Yes
Pump Rate (percent) of Job Stayed At Designed Pump Rate Pump Rate range defined as +/- 1bbl/min. Calculation: Total BBLs of fluid pumped at the designed rate divided by Total BBLs of fluid pumped, multiplied by 100	95
Nbr of Remedial Sqz Jobs Rqd - Competition Number Of Remedial Squeeze Jobs Required After Primary Job Performed By Competition	0
Nbr of Remedial Plug Jobs Rqd - HES Number Of Remedial Plug Jobs Needed After Primary Plug Pumped By HES	0
Nbr of Remedial Sqz Jobs Rqd - HES Number Of Remedial Squeeze Jobs Required After Primary Job Performed By HES	0