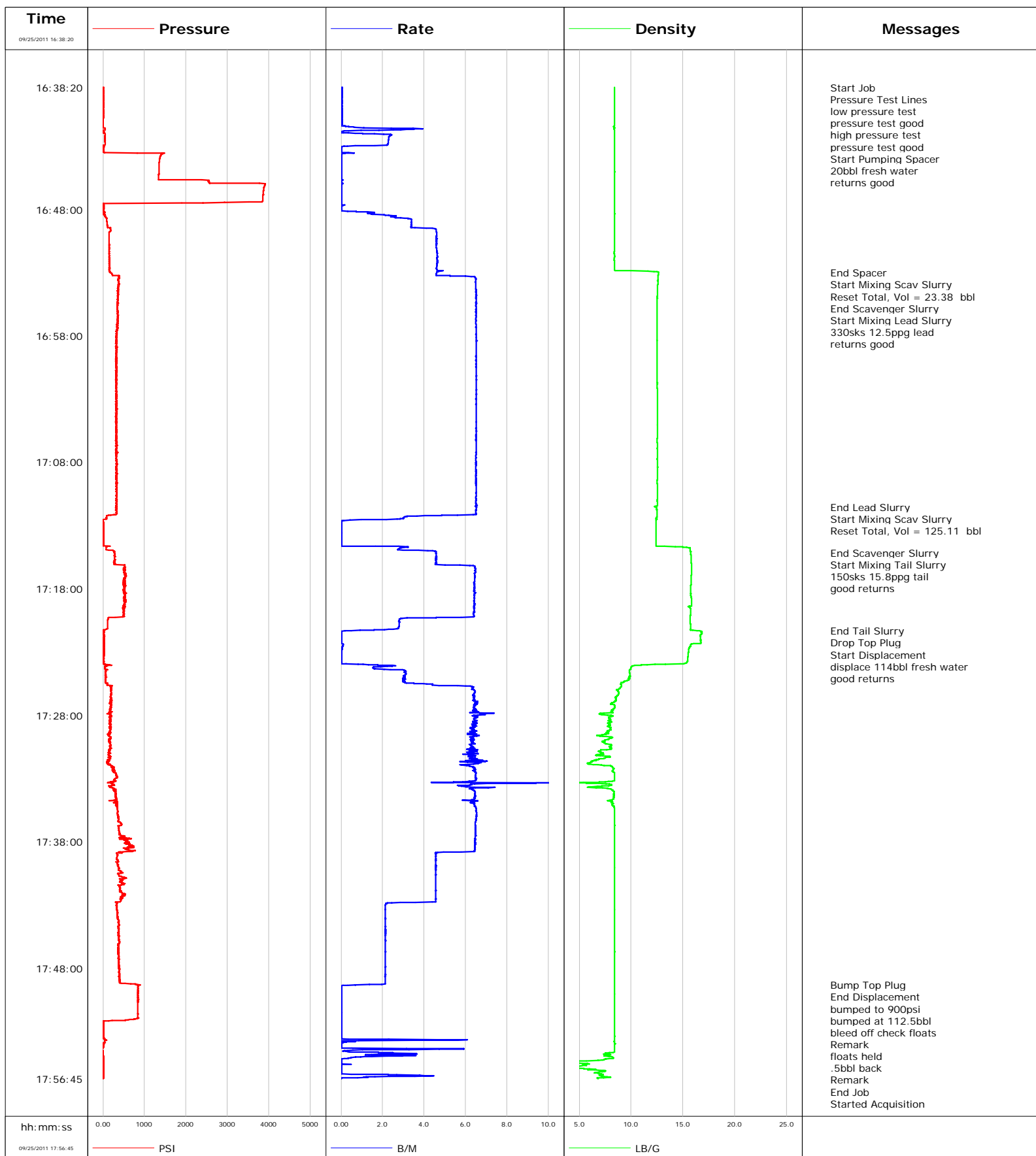


Well FEDERAL 29-4
Field S. PARACHUTE
Engineer Jeff Patterson
Country United States

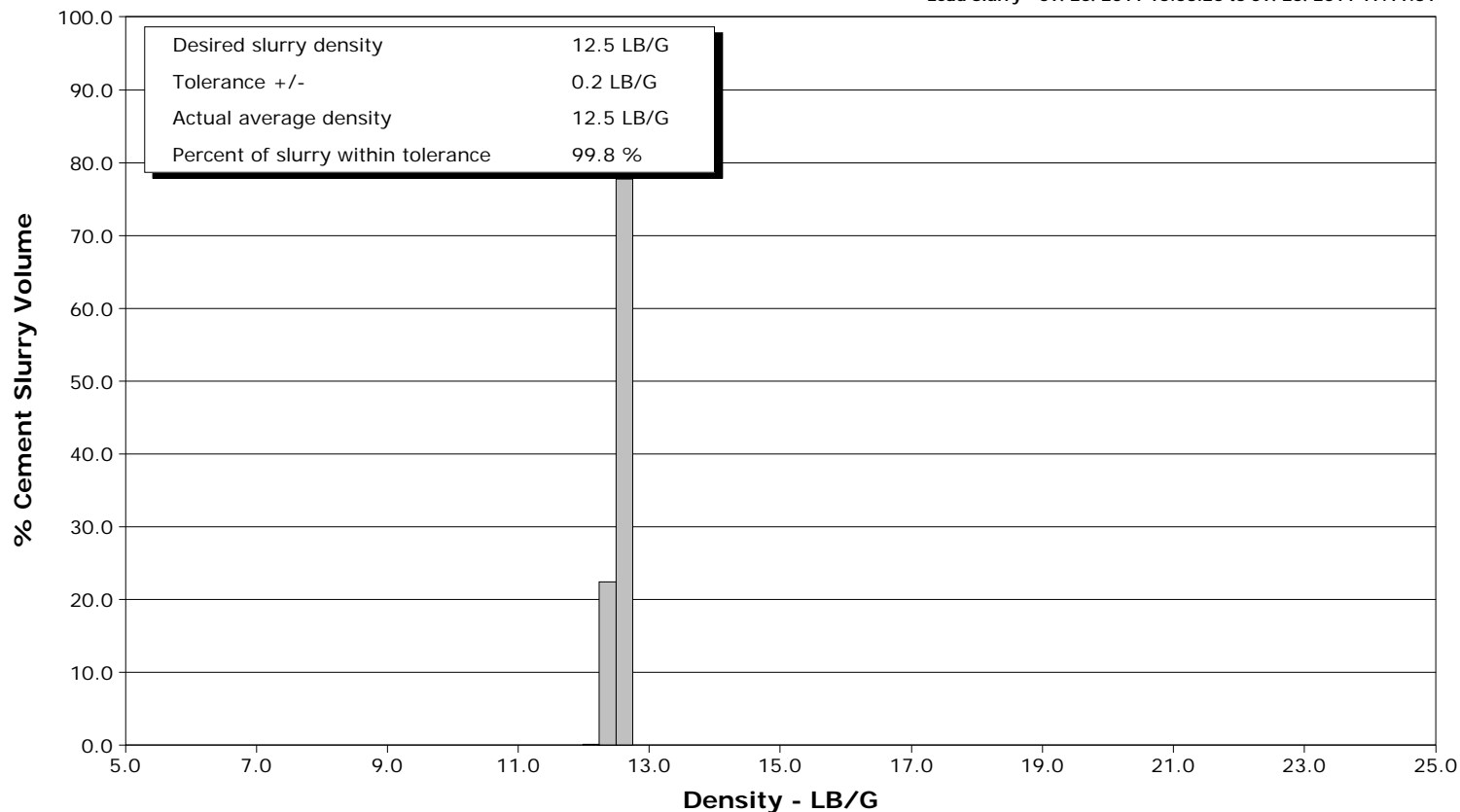
Client ENCANA
SIR No. BUNM-00192
Job Type 9 5/8" SURFACE
Job Date 09-25-2011



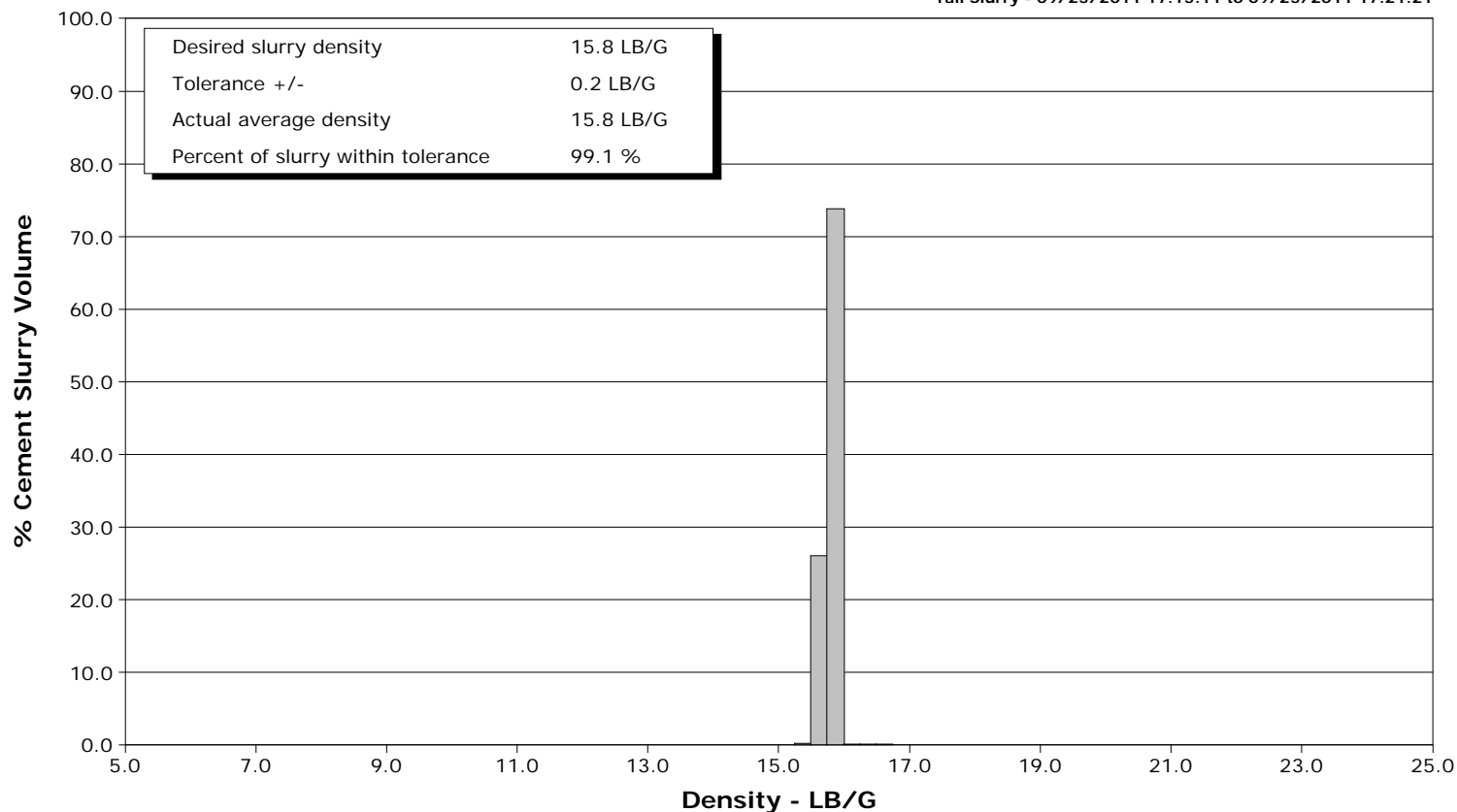
Well FEDERAL 29-4
Field S. PARACHUTE
Engineer Jeff Patterson
Country United States

Client ENCANA
SIR No. BUNM-00192
Job Type 9 5/8" SURFACE
Job Date 09-25-2011

Lead Slurry - 09/25/2011 16:53:26 to 09/25/2011 17:11:31



Tail Slurry - 09/25/2011 17:15:11 to 09/25/2011 17:21:21





Cementing Service Report

				Customer ENCANA		Job Number BUNM-00192		
Well FEDERAL 29-4 FEDERAL 29-4			Location (legal) PA30		Schlumberger Location Grand Junction, Colorado		Job Start Sep/25/2011	
Field S. PARACHUTE		Formation Name/Type SHALE		Deviation 0 deg	Bit Size 12.3 in	Well MD 1522.0 ft		Well TVD 1522.0 ft
County GARFIELD		State/Province Colorado		BHP	BHST 90 degF	BHCT 81 degF	Pore Press. Gradient	
Well Master 0631289085		API/UWI						
Rig Name NABORS M-13	Drilled For Gas	Service Via Land	Casing/Liner					
			Depth, ft	Size, in	Weight, lb/ft	Grade	Thread	
Offshore Zone	Well Class New	Well Type Development	1522.0	9.630	36.0	J55	8RD	
			0.0	0.000	0.0			
Drilling Fluid Type		Max. Density	Plastic Viscosity	Tubing/Drill Pipe				
				Depth,	Size,	Weight,	Grade	Thread
Service Line Cementing	Job Type 9 5/8" SURFACE							
Max. Allowed Tub. Press 3000 psi	Max. Allowed Ann. Press	WH Connection 9 5/8" CEMENT HEAD	Perforations/Open Hole					
			Top,	Bottom,		No. of Shots	Total Interval	
							Diameter	
			Treat Down Casing	Displacement 114.0 bbl	Packer Type	Packer Depth		
			Tubing Vol.	Casing Vol. 117.0 bbl	Annular Vol. 88.0 bbl	Openhole Vol. 209.0 bbl		
Casing/Tubing Secured <input checked="" type="checkbox"/>	1 Hole Vol. Circulated prior to Cement <input checked="" type="checkbox"/>	Casing Tools						
		Squeeze Job						
Lift Pressure 753 psi		Shoe Type Guide	Squeeze Type					
Pipe Rotated <input type="checkbox"/>	Pipe Reciprocated <input type="checkbox"/>	Shoe Depth 1522.0 ft	Tool Type					
No. Centralizers	Top Plugs 1	Bottom Plugs	Stage Tool Type	Tool Depth				
Cement Head Type Single		Stage Tool Depth	Tail Pipe Size					
Job Scheduled For Sep/25/2011	Arrived on Location Sep/25/2011	Leave Location Sep/25/2011	Collar Type Float	Tail Pipe Depth				
			Collar Depth 1477.0 ft	Sqz. Total Vol.				
Date	Time 24-hr clock	Treating Pressure PSI	Flow Rate B/M	Density LB/G	Volume BBL	Message		
09/25/2011	15:50:48					Started Acquisition		
09/25/2011	16:38:20	0	0.0	8.39	0.0			
09/25/2011	16:38:21					Start Job		
09/25/2011	16:38:21	1	0.0	8.39	0.0			
09/25/2011	16:38:24					Pressure Test Lines		
09/25/2011	16:38:24	1	0.0	8.39	0.0			
09/25/2011	16:38:27					low pressure test		
09/25/2011	16:38:27					pressure test good		
09/25/2011	16:38:27	-1	0.0	8.39	0.0			
09/25/2011	16:38:28					high pressure test		
09/25/2011	16:38:28					pressure test good		
09/25/2011	16:38:28	-1	0.0	8.39	0.0			
09/25/2011	16:38:31					Start Pumping Spacer		
09/25/2011	16:38:31	0	0.0	8.39	0.0			
09/25/2011	16:38:34					20bbl fresh water		
09/25/2011	16:38:34					returns good		
09/25/2011	16:38:34	0	0.0	8.39	0.0			
09/25/2011	16:38:48	0	0.0	8.39	0.0			
09/25/2011	16:39:18	-1	0.0	8.39	0.0			
09/25/2011	16:39:48	0	0.0	8.39	0.0			
09/25/2011	16:40:18	-0	0.0	8.39	0.0			

Well FEDERAL 29-4 FEDERAL 29-4			Field S. PARACHUTE		Job Start Sep/25/2011	Customer ENCANA	Job Number BUNM-00192
Date	Time 24-hr clock	Treating Pressure PSI	Flow Rate B/M	Density LB/G	Volume BBL	Message	
09/25/2011	16:41:18	-4	0.0	8.39	0.1		
09/25/2011	16:41:48	20	0.2	8.39	0.7		
09/25/2011	16:42:18	47	2.3	8.38	1.4		
09/25/2011	16:42:48	48	2.3	8.39	2.6		
09/25/2011	16:43:18	10	0.0	8.40	2.9		
09/25/2011	16:43:48	1385	0.0	8.40	3.0		
09/25/2011	16:44:18	1356	0.0	8.40	3.0		
09/25/2011	16:44:48	1348	0.0	8.40	3.0		
09/25/2011	16:45:18	1344	0.0	8.40	3.0		
09/25/2011	16:45:48	2560	0.0	8.40	3.0		
09/25/2011	16:46:18	3880	0.0	8.40	3.0		
09/25/2011	16:46:48	3859	0.0	8.40	3.0		
09/25/2011	16:47:18	3846	0.0	8.40	3.0		
09/25/2011	16:47:48	13	0.0	8.40	3.1		
09/25/2011	16:48:18	20	1.4	8.40	3.2		
09/25/2011	16:48:48	89	3.4	8.40	4.5		
09/25/2011	16:49:18	106	3.4	8.40	6.1		
09/25/2011	16:49:48	149	4.6	8.39	8.2		
09/25/2011	16:50:18	146	4.6	8.40	10.5		
09/25/2011	16:50:48	155	4.6	8.40	12.8		
09/25/2011	16:51:18	153	4.6	8.39	15.1		
09/25/2011	16:51:48	154	4.6	8.39	17.4		
09/25/2011	16:52:18	153	4.6	8.40	19.8		
09/25/2011	16:52:48	154	4.6	8.40	22.1		
09/25/2011	16:53:00					End Spacer	
09/25/2011	16:53:00	174	4.6	12.64	23.0		
09/25/2011	16:53:02					Start Mixing Scav Slurry	
09/25/2011	16:53:02	198	4.6	12.64	23.1		
09/25/2011	16:53:05					Reset Total, Vol = 23.38 bbl	
09/25/2011	16:53:05	218	4.6	12.64	23.4		
09/25/2011	16:53:18	399	6.3	12.60	24.4		
09/25/2011	16:53:26					End Scavenger Slurry	
09/25/2011	16:53:26					Start Mixing Lead Slurry	
09/25/2011	16:53:26	398	6.5	12.58	25.3		
09/25/2011	16:53:44					330sks 12.5ppg lead	
09/25/2011	16:53:44	380	6.5	12.57	27.2		
09/25/2011	16:53:45					returns good	
09/25/2011	16:53:45	380	6.5	12.57	27.3		
09/25/2011	16:53:48	377	6.5	12.57	27.7		
09/25/2011	16:54:18	362	6.5	12.55	30.9		
09/25/2011	16:54:48	361	6.5	12.53	34.2		
09/25/2011	16:55:18	355	6.5	12.52	37.4		
09/25/2011	16:55:48	341	6.5	12.51	40.7		
09/25/2011	16:56:18	354	6.5	12.50	43.9		
09/25/2011	16:56:48	359	6.5	12.49	47.2		
09/25/2011	16:57:18	338	6.5	12.49	50.4		
09/25/2011	16:57:48	328	6.5	12.49	53.7		
09/25/2011	16:58:18	334	6.5	12.49	56.9		
09/25/2011	16:58:48	333	6.5	12.49	60.2		
09/25/2011	16:59:18	325	6.5	12.49	63.4		
09/25/2011	16:59:48	333	6.5	12.50	66.7		
09/25/2011	17:00:18	315	6.5	12.50	70.0		
09/25/2011	17:00:48	314	6.5	12.50	73.2		
09/25/2011	17:01:18	326	6.5	12.51	76.5		

Well FEDERAL 29-4 FEDERAL 29-4			Field S. PARACHUTE		Job Start Sep/25/2011	Customer ENCANA	Job Number BUNM-00192
Date	Time 24-hr clock	Treating Pressure PSI	Flow Rate B/M	Density LB/G	Volume BBL	Message	
09/25/2011	17:02:18	322	6.5	12.53	83.0		
09/25/2011	17:02:48	338	6.5	12.55	86.2		
09/25/2011	17:03:18	328	6.5	12.54	89.5		
09/25/2011	17:03:48	336	6.5	12.54	92.7		
09/25/2011	17:04:18	314	6.5	12.54	96.0		
09/25/2011	17:04:48	333	6.5	12.54	99.3		
09/25/2011	17:05:18	327	6.5	12.55	102.5		
09/25/2011	17:05:48	332	6.5	12.53	105.8		
09/25/2011	17:06:18	308	6.5	12.51	109.0		
09/25/2011	17:06:48	333	6.5	12.53	112.3		
09/25/2011	17:07:18	320	6.5	12.53	115.5		
09/25/2011	17:07:48	336	6.5	12.53	118.8		
09/25/2011	17:08:18	336	6.5	12.54	122.0		
09/25/2011	17:08:48	318	6.5	12.53	125.3		
09/25/2011	17:09:18	335	6.5	12.53	128.5		
09/25/2011	17:09:48	341	6.5	12.54	131.8		
09/25/2011	17:10:18	319	6.5	12.53	135.0		
09/25/2011	17:10:48	330	6.5	12.54	138.3		
09/25/2011	17:11:18	329	6.5	12.53	141.5		
09/25/2011	17:11:31					End Lead Slurry	
09/25/2011	17:11:31	339	6.5	12.26	143.0		
09/25/2011	17:11:33					Start Mixing Scav Slurry	
09/25/2011	17:11:33	330	6.5	12.40	143.2		
09/25/2011	17:11:48	309	6.5	12.48	144.8		
09/25/2011	17:12:18	84	3.2	12.50	147.8		
09/25/2011	17:12:42					Reset Total, Vol = 125.11 bbl	
09/25/2011	17:12:42	-1	0.0	12.39	148.5		
09/25/2011	17:12:48	1	0.0	12.39	148.5		
09/25/2011	17:13:18	1	0.0	12.38	148.5		
09/25/2011	17:13:48	3	0.0	12.39	148.5		
09/25/2011	17:14:18	3	0.0	12.39	148.5		
09/25/2011	17:14:48	73	2.8	15.68	149.0		
09/25/2011	17:15:10					End Scavenger Slurry	
09/25/2011	17:15:10	280	4.6	15.74	150.3		
09/25/2011	17:15:11					Start Mixing Tail Slurry	
09/25/2011	17:15:11	277	4.6	15.74	150.4		
09/25/2011	17:15:15					150sks 15.8ppg tail	
09/25/2011	17:15:15					good returns	
09/25/2011	17:15:15	284	4.6	15.75	150.7		
09/25/2011	17:15:18	295	4.6	15.76	150.9		
09/25/2011	17:15:48	270	4.6	15.80	153.2		
09/25/2011	17:16:18	532	6.5	15.82	155.8		
09/25/2011	17:16:48	550	6.5	15.82	159.0		
09/25/2011	17:17:18	494	6.5	15.79	162.3		
09/25/2011	17:17:48	502	6.4	15.76	165.5		
09/25/2011	17:18:18	542	6.4	15.75	168.7		
09/25/2011	17:18:48	517	6.4	15.84	171.9		
09/25/2011	17:19:18	524	6.4	15.82	175.1		
09/25/2011	17:19:48	509	6.4	15.74	178.3		
09/25/2011	17:20:18	136	4.6	15.68	181.5		
09/25/2011	17:20:48	114	2.8	15.71	182.9		
09/25/2011	17:21:18	12	0.9	15.94	184.2		
09/25/2011	17:21:21					End Tail Slurry	
09/25/2011	17:21:21	19	0.2	16.60	184.2		

Well FEDERAL 29-4 FEDERAL 29-4			Field S. PARACHUTE		Job Start Sep/25/2011	Customer ENCANA	Job Number BUNM-00192
Date	Time 24-hr clock	Treating Pressure PSI	Flow Rate B/M	Density LB/G	Volume BBL	Message	
09/25/2011	17:21:22	16	0.0	16.71	184.2		
09/25/2011	17:21:23					Start Displacement	
09/25/2011	17:21:23	16	0.0	16.75	184.2		
09/25/2011	17:21:24					displace 114bbl fresh water	
09/25/2011	17:21:24	19	0.0	16.78	184.2		
09/25/2011	17:21:25					good returns	
09/25/2011	17:21:25	16	0.0	16.77	184.2		
09/25/2011	17:21:48	19	0.0	16.69	184.2		
09/25/2011	17:22:18	19	0.0	16.73	184.2		
09/25/2011	17:22:48	17	0.0	15.56	184.2		
09/25/2011	17:23:18	14	0.0	15.49	184.2		
09/25/2011	17:23:48	15	0.0	15.41	184.2		
09/25/2011	17:24:18	45	1.6	9.98	184.8		
09/25/2011	17:24:48	56	3.1	9.87	186.2		
09/25/2011	17:25:18	66	3.0	9.45	187.8		
09/25/2011	17:25:48	194	6.4	8.96	189.9		
09/25/2011	17:26:18	202	6.4	8.79	193.1		
09/25/2011	17:26:48	188	6.5	8.50	196.3		
09/25/2011	17:27:18	181	6.4	8.43	199.6		
09/25/2011	17:27:48	184	6.2	8.28	202.8		
09/25/2011	17:28:18	183	6.5	7.90	206.1		
09/25/2011	17:28:48	171	6.4	7.97	209.3		
09/25/2011	17:29:18	169	6.2	7.90	212.5		
09/25/2011	17:29:48	182	6.3	8.13	215.7		
09/25/2011	17:30:18	178	6.2	7.92	218.8		
09/25/2011	17:30:48	139	6.4	7.07	222.0		
09/25/2011	17:31:18	169	6.2	7.99	225.1		
09/25/2011	17:31:48	116	6.6	5.80	228.3		
09/25/2011	17:32:18	258	6.4	8.30	231.5		
09/25/2011	17:32:48	317	6.5	8.40	234.7		
09/25/2011	17:33:18	264	5.4	6.93	237.9		
09/25/2011	17:33:48	259	6.3	7.67	241.3		
09/25/2011	17:34:18	308	6.4	8.34	244.5		
09/25/2011	17:34:48	303	6.6	7.98	247.7		
09/25/2011	17:35:18	343	6.5	8.38	250.9		
09/25/2011	17:35:48	350	6.5	8.40	254.1		
09/25/2011	17:36:18	372	6.5	8.40	257.4		
09/25/2011	17:36:48	376	6.5	8.40	260.6		
09/25/2011	17:37:18	395	6.5	8.40	263.9		
09/25/2011	17:37:48	504	6.5	8.40	267.1		
09/25/2011	17:38:18	705	6.5	8.40	270.3		
09/25/2011	17:38:48	580	6.4	8.40	273.6		
09/25/2011	17:39:18	331	4.6	8.40	275.9		
09/25/2011	17:39:48	349	4.6	8.40	278.2		
09/25/2011	17:40:18	381	4.6	8.40	280.5		
09/25/2011	17:40:48	445	4.6	8.40	282.8		
09/25/2011	17:41:18	486	4.6	8.40	285.0		
09/25/2011	17:41:48	401	4.6	8.40	287.3		
09/25/2011	17:42:18	518	4.6	8.40	289.6		
09/25/2011	17:42:48	303	4.4	8.40	291.9		
09/25/2011	17:43:18	342	2.1	8.40	293.0		
09/25/2011	17:43:48	346	2.1	8.40	294.1		
09/25/2011	17:44:18	375	2.1	8.40	295.1		
09/25/2011	17:44:48	370	2.1	8.40	296.2		

Well FEDERAL 29-4 FEDERAL 29-4			Field S. PARACHUTE		Job Start Sep/25/2011	Customer ENCANA	Job Number BUNM-00192
Date	Time 24-hr clock	Treating Pressure PSI	Flow Rate B/M	Density LB/G	Volume BBL	Message	
09/25/2011	17:45:48	390	2.1	8.40	298.3		
09/25/2011	17:46:18	370	2.1	8.40	299.4		
09/25/2011	17:46:48	379	2.1	8.40	300.5		
09/25/2011	17:47:18	377	2.1	8.40	301.5		
09/25/2011	17:47:48	380	2.1	8.40	302.6		
09/25/2011	17:48:18	395	2.1	8.40	303.7		
09/25/2011	17:48:48	406	2.1	8.40	304.7		
09/25/2011	17:49:18	784	2.0	8.40	305.8		
09/25/2011	17:49:20					Bump Top Plug	
09/25/2011	17:49:20	896	0.7	8.41	305.8		
09/25/2011	17:49:22					End Displacement	
09/25/2011	17:49:22	824	0.3	8.40	305.9		
09/25/2011	17:49:23					bumped to 900psi	
09/25/2011	17:49:23	824	0.1	8.41	305.9		
09/25/2011	17:49:24					bumped at 112.5bbl	
09/25/2011	17:49:24					bleed off check floats	
09/25/2011	17:49:24	847	0.1	8.40	305.9		
09/25/2011	17:49:25					Remark	
09/25/2011	17:49:25					floats held	
09/25/2011	17:49:25					.5bbl back	
09/25/2011	17:49:25	833	0.0	8.40	305.9		
09/25/2011	17:49:26					Remark	
09/25/2011	17:49:26	834	0.0	8.40	305.9		
09/25/2011	17:49:48	846	0.0	8.41	305.9		
09/25/2011	17:50:18	845	0.0	8.41	305.9		
09/25/2011	17:50:48	845	0.0	8.41	305.9		
09/25/2011	17:51:18	844	0.0	8.41	305.9		
09/25/2011	17:51:48	845	0.0	8.41	305.9		
09/25/2011	17:52:18	2	0.0	8.41	305.9		
09/25/2011	17:52:48	3	0.0	8.41	305.9		
09/25/2011	17:53:18	3	0.0	8.41	305.9		
09/25/2011	17:53:48	37	0.0	8.41	306.4		
09/25/2011	17:54:18	4	0.0	8.41	306.4		
09/25/2011	17:54:48	-2	3.6	7.55	307.4		
09/25/2011	17:55:18	2	0.0	7.21	308.0		
09/25/2011	17:55:48	4	0.0	4.87	308.0		
09/25/2011	17:56:18	4	0.0	6.67	308.0		
09/25/2011	17:56:42					End Job	
09/25/2011	17:56:42	3	0.0	6.74	308.7		
09/25/2011	17:59:50					Started Acquisition	

Well FEDERAL 29-4 FEDERAL 29-4	Field S. PARACHUTE	Job Start Sep/25/2011	Customer ENCANA	Job Number BUNM-00192
-----------------------------------	-----------------------	--------------------------	--------------------	--------------------------

Post Job Summary

Average Pump Rates, bbl/min					Volume of Fluid Injected, bbl			
Slurry 6.0	N2	Mud	Maximum Rate 8.0	Total Slurry 155.0	Mud	Spacer 20.0	N2	
Treating Pressure Summary, psi					Breakdown Fluid			
Maximum 3000	Final 900	Average 200	Bump Plug to 900	Breakdown	Type	Volume	Density	
Avg. N2 Percent	Designed Slurry Volume 155.0 bbl		Displacement 114.0 bbl	Mix Water Temp 65 degF	Cement Circulated to Surface? <input checked="" type="checkbox"/>	Volume 44.0 bbl		
					Washed Thru Perfs <input type="checkbox"/>	To		
Customer or Authorized Representative VLAD, KOCHETOV			Schlumberger Supervisor Jeff Patterson			Circulation Lost <input type="checkbox"/>	Job Completed <input checked="" type="checkbox"/>	
					-		-	