
CHEVRON - MID-CONTINENT EBIZ

**SKR 698-09-AV-18
SKINNER RIDGE
Garfield County , Colorado**

Cement Production Casing **23-Apr-2009**

Job Site Documents

The Road to Excellence Starts with Safety

Sold To #: 338668	Ship To #: 2713361	Quote #:	Sales Order #: 6621786
Customer: CHEVRON - MID-CONTINENT EBIZ	Customer Rep: Tatum, Elmer		
Well Name: SKR	Well #: 698-09-AV-18	API/UWI #:	
Field: SKINNER RIDGE	City (SAP): PARACHUTE	County/Parish: Garfield	State: Colorado
Contractor: H&P 318	Rig/Platform Name/Num: H & P 318		
Job Purpose: Cement Production Casing			
Well Type: Development Well	Job Type: Cement Production Casing		
Sales Person: DUNNING, DUSTIN	Srvc Supervisor: NELSON, RYAN	MBU ID Emp #: 386514	

Job Personnel

HES Emp Name	Exp Hrs	Emp #	HES Emp Name	Exp Hrs	Emp #	HES Emp Name	Exp Hrs	Emp #
DUBON, TODD N	6	443351	GREGORY, JON D	6	439067	NELSON, RYAN Cody	6	386514
OLDS, RYAN John	6	418018	TALAROVICH, JEREMY Jay	6	425449	YOUNG, JEREMY R	6	418013

Equipment

HES Unit #	Distance-1 way	HES Unit #	Distance-1 way	HES Unit #	Distance-1 way	HES Unit #	Distance-1 way
10567589C	120 mile	10951245	120 mile	10951249	120 mile	10995027	120 mile

Job Hours

Date	On Location Hours	Operating Hours	Date	On Location Hours	Operating Hours	Date	On Location Hours	Operating Hours
4-23-09	6	3						

TOTAL	Total is the sum of each column separately							
-------	--	--	--	--	--	--	--	--

Job

Formation Name	Job Times
Formation Depth (MD) Top Bottom	Date Time Time Zone
Form Type BHST	Called Out 22 - Apr - 2009 21:00 MST
Job depth MD 6500. ft Job Depth TVD 6500. ft	On Location 23 - Apr - 2009 01:30 MST
Water Depth Wk Ht Above Floor 4. ft	Job Started 23 - Apr - 2009 04:15 MST
Perforation Depth (MD) From To	Job Completed 23 - Apr - 2009 05:55 MST
	Departed Loc 23 - Apr - 2009 07:30 MST

Well Data

Description	New / Used	Max pressure psig	Size in	ID in	Weight lbm/ft	Thread	Grade	Top MD ft	Bottom MD ft	Top TVD ft	Bottom TVD ft
Open Hole				7.875				1026.	6500.		
Production Casing			4.5	4.	11.6			0.	6475.		
Surface Casing			8.625	8.097	24.			0.	1026.		

Sales/Rental/3rd Party (HES)

Description	Qty	Qty uom	Depth	Supplier
PLUG,CMTG,TOP,4 1/2,HVE,3.65 MIN/4.14 MA	1	EA		
ADC (AUTO DENSITY CTRL) SYS, /JOB,ZI	1	JOB		
PORT. DAS W/CEMWIN,ACQUIRE W/HES, ZI	1	JOB		

Tools and Accessories

Type	Size	Qty	Make	Depth	Type	Size	Qty	Make	Depth	Type	Size	Qty	Make
Guide Shoe					Packer					Top Plug	9 5/8	1	HES
Float Shoe					Bridge Plug					Bottom Plug			
Float Collar					Retainer					SSR plug set			
Insert Float										Plug Container	9 5/8	1	HES
Stage Tool										Centralizers			

Miscellaneous Materials

Gelling Agt	Conc	Surfactant	Conc	Acid Type	Qty	Conc	%
Treatment Fld	Conc	Inhibitor	Conc	Sand Type	Size	Conc	Qty

Fluid Data									
Stage/Plug #: 1									
Fluid #	Stage Type	Fluid Name	Qty	Qty uom	Mixing Density lbm/gal	Yield ft ³ /sk	Mix Fluid Gal/sk	Rate bbl/min	Total Mix Fluid Gal/sk
1	Dyed Polyflake Spacer		40.00	bbl	8.33	.0	.0	.0	
2	Lead Cement	VARICEM (TM) CEMENT (452009)	360.0	sacks	12.8	1.6	7.31	6.0	
3	Tail Cement	VARICEM (TM) CEMENT (452009)	660.0	sacks	13.2	1.47	6.32	6.0	
4	KCL DISPLACEMENT		99.6	bbl	8.43	.0	.0	.0	
Calculated Values		Pressures		Volumes					
Displacement	99.6	Shut In: Instant		Lost Returns	NO	Cement Slurry	275.4	Pad	
Top Of Cement		5 Min		Cement Returns	0	Actual Displacement	99.6	Treatment	
Frac Gradient		15 Min		Spacers		Load and Breakdown		Total Job	
Rates									
Circulating		Mixing	6	Displacement	8	Avg. Job	6.5		
Cement Left In Pipe	Amount	46.5 ft	Reason	Shoe Joint					
Frac Ring # 1 @	ID	Frac ring # 2 @	ID	Frac Ring # 3 @	ID	Frac Ring # 4 @	ID		
The Information Stated Herein Is Correct				Customer Representative Signature					

The Road to Excellence Starts with Safety

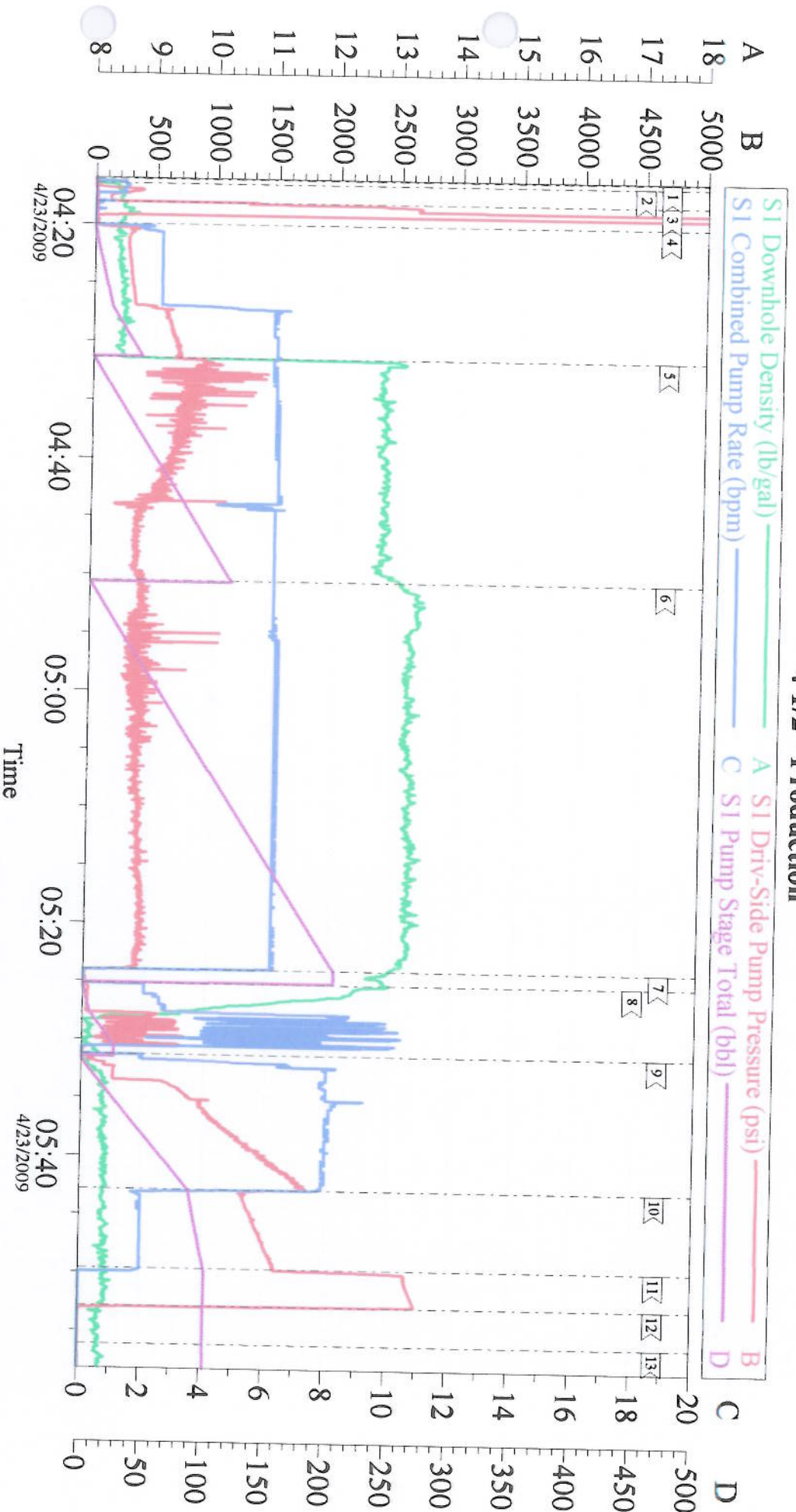
Sold To #: 338668	Ship To #: 2713361	Quote #:	Sales Order #: 6621786
Customer: CHEVRON - MID-CONTINENT EBIZ		Customer Rep: Tatum, Elmer	
Well Name: SKR	Well #: 698-09-AV-18	API/UWI #:	
Field: SKINNER RIDGE	City (SAP): PARACHUTE	County/Parish: Garfield	State: Colorado
Legal Description:			
Lat:		Long:	
Contractor: H&P 318	Rig/Platform Name/Num: H & P 318		
Job Purpose: Cement Production Casing		Ticket Amount:	
Well Type: Development Well	Job Type: Cement Production Casing		
Sales Person: DUNNING, DUSTIN	Srv Supervisor: NELSON, RYAN	MBU ID Emp #: 386514	

Activity Description	Date/Time	Cht #	Rate bbl/min	Volume bbl		Pressure psig		Comments
				Stage	Total	Tubing	Casing	
Call Out	04/22/2009 21:00							Jon Gregory is safety observer
Arrive At Loc	04/23/2009 01:30							Arrived early, requested on loc at 0300. Rig running casing.
Assessment Of Location Safety Meeting	04/23/2009 01:35							
Pre-Rig Up Safety Meeting	04/23/2009 01:40							
Rig-Up Equipment	04/23/2009 01:45							
Pre-Job Safety Meeting	04/23/2009 04:00							
Start Job	04/23/2009 04:15							TD- 6500' TP-6475' SJ- 46.54' CASING 4 1/2" 11.6# HOLE 7 7/8" MUD 10.4 SURFACE SET @ 1026
Other	04/23/2009 04:16			2			380.0	Fill lines
Test Lines	04/23/2009 04:17						4500.0	
Pump Spacer 1	04/23/2009 04:19		6	40			700.0	Fresh water with Poly-Flake and Green Dye
Pump Lead Cement	04/23/2009 04:30		6	102.6			650.0	360 Sks 12.8 ppg 1.6 yield 7.31 gal/sk
Pump Tail Cement	04/23/2009 04:50		6	172.8			465.0	660 Sks 13.2 ppg 1.47 yield 6.32 gal/sk
Shutdown	04/23/2009 05:23							
Clean Lines	04/23/2009 05:24							
Drop Top Plug	04/23/2009 05:30							
Pump Displacement	04/23/2009 05:31		8	99.6			1700.0	2% KCL water

Cementing Job Log

Activity Description	Date/Time	Cht #	Rate bbl/ min	Volume bbl		Pressure psig		Comments
				Stage	Total	Tubing	Casing	
Slow Rate	04/23/2009 05:42		2	85			1550. 0	
Bump Plug	04/23/2009 05:49		2	99.6			2650. 0	
Check Floats	04/23/2009 05:53							Floats Held
End Job	04/23/2009 05:55							Well was circulated prior to the job. Good returns throughout the job. Pipe was static throughout the job. Thank you for using Halliburton--Ryan Nelson & Crew

Chevron 4 1/2" Production



Customer: Chevron
Well Description: 698-09-AV-18
Company Rep:

Job Date: 23-Apr-2009
Job Type: Longstring
Cement Supervisor: Ryan Nelson

Sales Order #: 6621786
ADC Used: Yes
Elite #: 3