

HALLIBURTON

CHEVRON - MID-CONTINENT EBIZ

**SKR 698-09-AV-18
PICEANCE
Garfield County , Colorado**

Cement Surface Casing
21-Mar-2009

Job Site Documents

HALLIBURTON

Cementing Job Summary

The Road to Excellence Starts with Safety

Sold To #: 338668	Ship To #: 2713361	Quote #:	Sales Order #: 6574727
Customer: CHEVRON - MID-CONTINENT EBIZ	Customer Rep: MORGAN, RANDY		
Well Name: SKR	Well #: 096-09-AV-10		
Field: PICEANCE	City (SAP): PARACHUTE	County/Parish: Garfield	API/UWI #:
Contractor: H&P 318	Rig/Platform Name/Num: H & P 318	State: Colorado	
Job Purpose: Cement Surface Casing			
Well Type: Development Well	Job Type: Cement Surface Casing		
Sales Person: DUNNING, DUSTIN	Srvc Supervisor: DANIEL, EVERETT	MBU ID Emp #: 337325	

Job Personnel								
HES Emp Name	Exp Hrs	Emp #	HES Emp Name	Exp Hrs	Emp #	HES Emp Name	Exp Hrs	Emp #
ANGLESTEIN, TROY Edward WM	5.5	436099	DANIEL, EVERETT Dean	5.5	337325	Nye, Kevin	5.5	460558
SMITH, CHRISTOPHER Scott	5.5	452619	VANALSTYNE, TROY L	5.5	420256	WILKE, ANDREW J	5.5	420256

Equipment							
HES Unit #	Distance-1 way	HES Unit #	Distance-1 way	HES Unit #	Distance-1 way	HES Unit #	Distance-1 way
10616651C	120 mile	10951246	120 mile	10973565	120 mile	11021972	120 mile
11027039	120 mile						

Job Hours							
Date	On Location Hours	Operating Hours	Date	On Location Hours	Operating Hours	Date	On Location Hours
03/20/2009	2.5	1	03/21/2009	3	2		
TOTAL	5.5	3					

Job				Job Times			
Formation Name	Formation Depth (MD)	Top	Bottom	Called Out	Date	Time	Time Zone
Form Type			BHST	On Location	20 - Mar - 2009	17:00	MST
Job depth MD	1040. ft		Job Depth TVD	Job Started	21 - Mar - 2009	00:24	MST
Water Depth			Wk Ht Above Floor	Job Completed	21 - Mar - 2009	01:13	MST
Perforation Depth (MD)	From		To	Departed Loc	21 - Mar - 2009	03:00	MST

Well Data											
Description	New / Used	Max pressure psig	Size in	ID in	Weight lbm/ft	Thread	Grade	Top MD ft	Bottom MD ft	Top TVD ft	Bottom TVD ft

Sales/Rental/3 rd Party (HES)				
Description	Qty	Qty uom	Depth	Supplier
PLUG,CMTG,TOP,8 5/8,HWE,7.20 MIN/8.09 MA	1	EA		
PORT. DAS W/CEMWIN;ACQUIRE W/HES, ZI	1	JOB		
ADC (AUTO DENSITY CTRL) SYS, /JOB,ZI	1	JOB		

Tools and Accessories											
Type	Size	Qty	Make	Depth	Type	Size	Qty	Make	Depth	Type	Size
Guide Shoe					Packer					Top Plug	
Float Shoe					Bridge Plug					Bottom Plug	
Float Collar					Retainer					SSR plug set	
Insert Float										Plug Container	
Stage Tool										Centralizers	

Miscellaneous Materials									
Gelling Agt	Conc	Surfactant	Conc	Acid Type	Qty	Conc	%		
Treatment Fld	Conc	Inhibitor	Conc	Sand Type	Size	Qty			

HAI
LIBURTON

Cementing Job Summary

Stage/Plug #: 1		Fluid Data							
Fluid #	Stage Type	Fluid Name	Qty	Qty uom	Mixing Density lbm/gal	Yield ft ³ /sk	Mix Fluid Gal/sk	Rate bbl/min	Total Mix Fluid Gal/sk
1	DYED AND POLYFLAKE SPACER		50	bbl	8.33	.0	.0	.0	
2	Lead Cement	VERSACEM (TM) SYSTEM (452010)	140	sacks	12.3	2.38	13.75		
3	Tail Cement	VERSACEM (TM) SYSTEM (452010)	155	sacks	12.8	2.11	11.75		
4	H2O DISPLACEMENT		62.5	bbl	8.33	.0	.0	.0	
Calculated Values		Pressures		Volumes					
Displacement	62.5	Shut In: Instant		Lost Returns		Cement Slurry	117.8	Dead	
Top Of Cement	SURFACE	5 Min		Cement Returns	30	Actual Displacement	62.5	Treatment	
Frac Gradient		15 Min		Spacers	50	Load and Breakdown		Total Job	
Rates									
Circulating	6	Mixing	6	Displacement	8	Avg. Job	7		
Cement Left In Pipe	Amount	44.28 ft	Reason	Shoe Joint					
Frac Ring # 1 @	ID	Frac ring # 2 @	ID	Frac Ring # 3 @	ID	Frac Ring # 4 @	ID		
The Information Stated Herein Is Correct				Customer Representative Signature					

Cementing Job Log

The Road to Excellence Starts with Safety

Sold To #: 338668	Ship To #: 2713361	Quote #:	Sales Order #: 6574727
Customer: CHEVRON - MID-CONTINENT EBIZ		Customer Rep: MORGAN, RANDY	
Well Name: SKR	Well #: 698-09-AV-18	API/UWI #:	
Field: PICEANCE	City (SAP): PARACHUTE	County/Parish: Garfield	State: Colorado
Legal Description:			
Lat: N 0 deg. OR N 0 deg. 0 min. 0 secs.		Long: E 0 deg. OR E 0 deg. 0 min. 0 secs.	
Contractor: H&P 318	Rig/Platform Name/Num: H & P 318		
Job Purpose: Cement Surface Casing			Ticket Amount:
Well Type: Development Well		Job Type: Cement Surface Casing	
Sales Person: DUNNING, DUSTIN	Srvc Supervisor: DANIEL, EVERETT	MBU ID Emp #: 337325	

Activity Description	Date/Time	Cht #	Rate bbl/min	Volume bbl		Pressure psig		Comments
				Stage	Total	Tubing	Casing	
Call Out	03/20/2009 17:00							
Depart Yard Safety Meeting	03/20/2009 19:00							Discussed driving conditions, possible hazards of travel, convoy order and communication.
Depart from Service Center or Other Site	03/20/2009 19:30							
Arrive at Location from Service Center	03/20/2009 21:00							Arrived 1.5 hr. early
Comment	03/20/2009 21:00							Consult with Co. Rep. verified numbers and materials and equipment on location including cement totals and water requirements.
Assessment Of Location Safety Meeting	03/20/2009 21:15							
Pre-Rig Up Safety Meeting	03/20/2009 21:20							Chris Smith was designated Safety Observer.
Rig-Up Equipment	03/20/2009 21:25							Elite 4, 660, Iron to rig, Iron to pit, Two water lines
Safety Meeting - Pre Job	03/21/2009 00:15							Discussed job procedures and safety issues. Co. Rep. verified plug loaded in plug container.
Start Job	03/21/2009 00:24							
Prime Pumps	03/21/2009 00:24							
Test Lines	03/21/2009 00:25		1.5	2			52.0	Fresh Water

Cementing Job Log

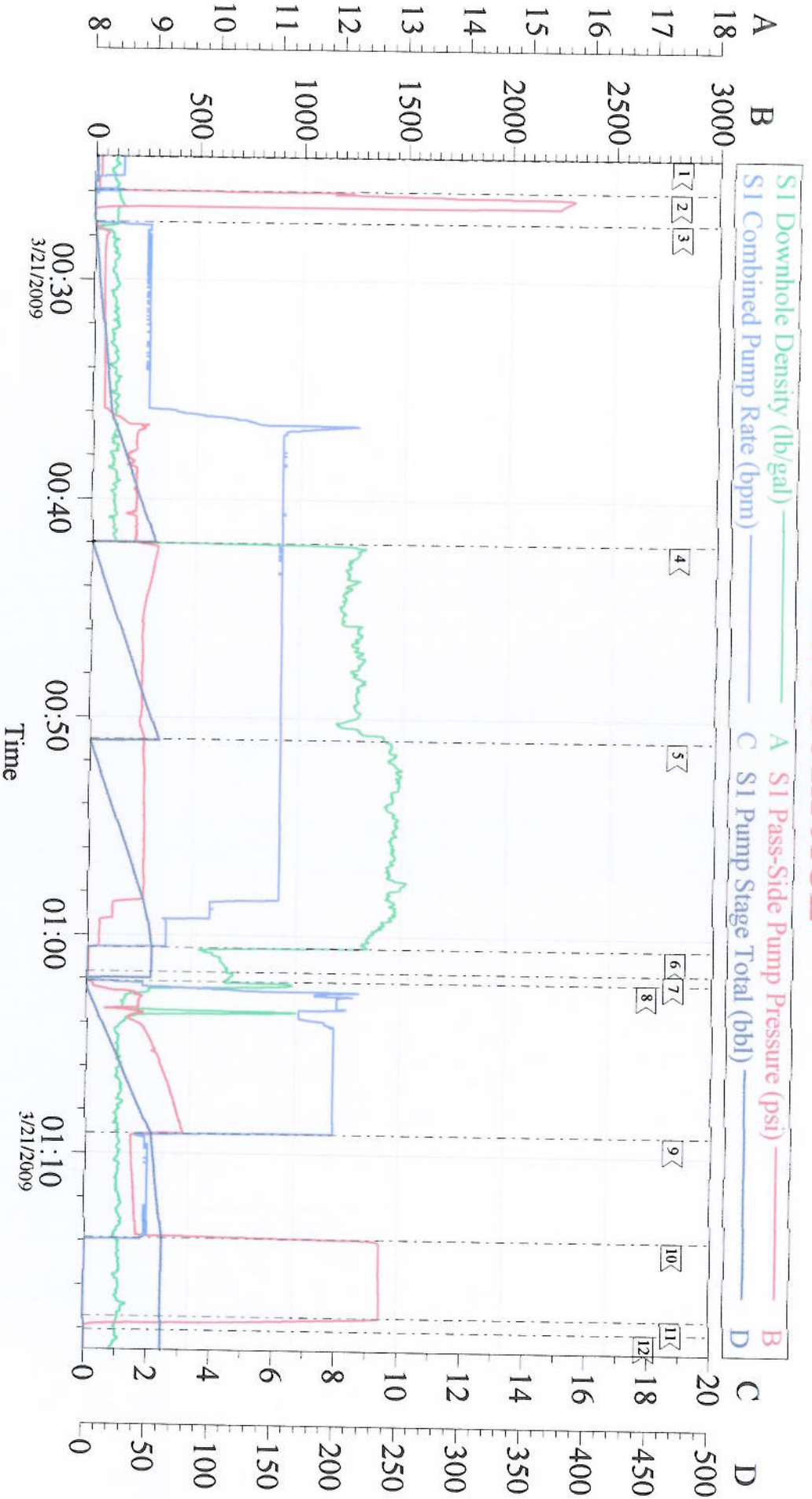
Activity Description	Date/Time	Cht #	Rate bbl/min	Volume bbl		Pressure psig		Comments
				Stage	Total	Tubing	Casing	
Pump Spacer 1	03/21/2009 00:27		6	50			224.0	Fresh Water, Dyed poly flake last 20 bbls
Pump Lead Cement	03/21/2009 00:41		6	59.3			315.0	140 sks of VERSACEM @ 12.3# -2.38 yield - 13.75 H2O requirement
Pump Tail Cement	03/21/2009 00:51		6	58.3			269.0	155 sks of VERSACEM @ 12.8# -2.11 yield - 11.75 H2O requirement
Shutdown	03/21/2009 01:00							
Drop Top Plug	03/21/2009 01:01							
Pump Displacement	03/21/2009 01:02		8	62.5			445.0	Fresh Water
Slow Rate	03/21/2009 01:09		2	52			245.0	
Bump Plug	03/21/2009 01:13		2	62.5			1245.0	Bumped plug @ calculated displacement and 1000 psi over
Check Floats	03/21/2009 01:17							Floats held
End Job	03/21/2009 01:18							
Safety Meeting - Pre Rig-Down	03/21/2009 01:20							
Rig-Down Equipment	03/21/2009 02:00							
Rig-Down Completed	03/21/2009 02:45							
Safety Meeting - Departing Location	03/21/2009 02:50							Discussed driving conditions, possible hazards of travel, convoy order and communication.
Depart Location for Service Center or Other Site	03/21/2009 03:00							

Total Depth = 1040 , Total Casing = 1027 , Shoe Joint = 44.28 , Mud Weight = 9.0# . Casing remained stationary throughout job and was chained down. 30 bbls of cement returned to surface. 201.7 bbls of H2O were used for the job and 30 bbls were used for clean up (after the job) The plug landed at calculated displacement and the floats held.

Thank you for using Grand Junction Halliburton Dean Daniel & Crew

H&P 318

8 5/8 SURFACE



Local Event Log

1	START JOB	00:24:25	2	TEST LINES	00:25:55	3	PUMP SPACER	00:27:22
4	PUMP LEAD CEMENT	00:41:59	5	PUMP TAIL CEMENT	00:51:00	6	SHUT DOWN	01:00:33
7	DROP TOP PLUG	01:01:41	8	START DISPLACEMENT	01:02:06	9	SLOW RATE	01:09:06
10	LAND PLUG	01:13:51	11	CHECK FLOATS/FLOATS HELD	01:17:26	12	END JOB	01:18:04

Customer: CHEVRON
Well Description: SKR 698-09-AV-18
Company Rep: RANDY MORGAN

Job Date: 20-Mar-2009
Job Type: SURFACE
Cement Supervisor: DEAN DANIEL

Sales Order #: 6574727
ADC Used: YES
Elite #Operator: TROY VANALSTYNE