

---

# **CHEVRON - MID-CONTINENT EBIZ**

---

**SKR 698-09-AV-17  
SKINNER RIDGE  
Garfield County , Colorado**

## **Cement Production Casing**

### **Job Site Documents**

## The Road to Excellence Starts with Safety

Sold To #: 338668		Ship To #: 2713360		Quote #:		Sales Order #: 6585514	
Customer: CHEVRON - MID-CONTINENT EBIZ				Customer Rep: MORGAN, RANDY			
Well Name: SKR		Well #: 698-09-AV-17		API/UWI #: 05-045-17300			
Field: SKINNER RIDGE		City (SAP): PARACHUTE		County/Parish: Garfield		State: Colorado	
Contractor: H&P 318		Rig/Platform Name/Num: H&P 318					
Job Purpose: Cement Production Casing							
Well Type: Development Well				Job Type: Cement Production Casing			
Sales Person: DUNNING, DUSTIN		Srvc Supervisor: YOUNG, JEREMY		MBU ID Emp #: 418013			
<b>Job Personnel</b>							
HES Emp Name	Exp Hrs	Emp #	HES Emp Name	Exp Hrs	Emp #	HES Emp Name	Exp Hrs
DICKEY, MATTHEW Allan	7.5	457739	DUBON, TODD N	7.5	443351	HAYES, JESSE Doug	7.5
LEIST, JAMES R	7.5	362787	LUCADO, JARED Heath	7.5	433527	REEVES, BRANDON W	7.5
SULLIVAN, MARK W	7.5	425453	YOUNG, JEREMY R	7.5	418013		
<b>Equipment</b>							
HES Unit #	Distance-1 way	HES Unit #	Distance-1 way	HES Unit #	Distance-1 way	HES Unit #	Distance-1 way
10567589C	120 mile	10744549	120 mile	10804575	120 mile	10829463	120 mile
10951249	120 mile	10995027	120 mile	6334	120 mile		
<b>Job Hours</b>							
Date	On Location Hours	Operating Hours	Date	On Location Hours	Operating Hours	Date	On Location Hours
04/08/2009	4	2	04/09/2009	3.5	1		
TOTAL		Total is the sum of each column separately					
<b>Job</b>				<b>Job Times</b>			
Formation Name				Date			
Formation Depth (MD) Top Bottom				Time			
Form Type				Time Zone			
Job depth MD 6490. ft				Called Out 08 - Apr - 2009 14:30 MST			
Water Depth				On Location 08 - Apr - 2009 17:30 MST			
Perforation Depth (MD) From To				Job Started 08 - Apr - 2009 23:23 MST			
				Job Completed 09 - Apr - 2009 00:56 MST			
				Departed Loc 09 - Apr - 2009 03:30 MST			
<b>Well Data</b>							
Description	New / Used	Max pressure psig	Size in	ID in	Weight lbf/ft	Thread	Grade
							Top MD ft Bottom MD ft Top TVD ft Bottom TVD ft
<b>Sales/Rental/3<sup>rd</sup> Party (HES)</b>							
Description				Qty	Qty uom	Depth	Supplier
PLUG, CMTG, TOP, 4 1/2, HW, 3.65 MIN/4.14 MA				1	EA		
PORT. DAS W/CEMWIN; ACQUIRE W/HES, ZI				1	JOB		
ADC (AUTO DENSITY CTRL) SYS, /JOB, ZI				1	JOB		
<b>Tools and Accessories</b>							
Type	Size	Qty	Make	Depth	Type	Size	Qty
Guide Shoe					Packer		
Float Shoe					Bridge Plug		
Float Collar					Retainer		
Insert Float							
Stage Tool							
<b>Miscellaneous Materials</b>							
Gelling Agt		Conc		Surfactant		Conc	
Treatment Fld		Conc		Inhibitor		Conc	
				Acid Type		Qty	Conc %
				Sand Type		Size	Qty



Fluid Data									
Stage/Plug #: 1									
Fluid #	Stage Type	Fluid Name	Qty	Qty uom	Mixing Density lbm/gal	Yield ft <sup>3</sup> /sk	Mix Fluid Gal/sk	Rate bbl/min	Total Mix Fluid Gal/sk
1	Dyed Polyflake Spacer		50.00	bbl	8.33	.0	.0	.0	
2	Lead Cement	VARICEM (TM) CEMENT (452009)	350.0	sacks	12.8	1.6	7.31		
3	Tail Cement	VARICEM (TM) CEMENT (452009)	660.0	sacks	13.2	1.47	6.32		
4	KCL DISPLACEMENT		99.00	bbl	8.4	.0	.0	.0	
Calculated Values		Pressures		Volumes					
Displacement	99	Shut In: Instant		Lost Returns	0	Cement Slurry	273	Pad	
Top Of Cement	SURFACE	5 Min		Cement Returns	0	Actual Displacement	99	Treatment	
Frac Gradient		15 Min		Spacers	50	Load and Breakdown		Total Job	
Rates									
Circulating	7.5	Mixing	6	Displacement	10	Avg. Job	6		
Cement Left In Pipe	Amount	45.9 ft	Reason	Shoe Joint					
Frac Ring # 1 @	ID	Frac ring # 2 @	ID	Frac Ring # 3 @	ID	Frac Ring # 4 @	ID		
The Information Stated Herein Is Correct				Customer Representative Signature					

*The Road to Excellence Starts with Safety*

Sold To #: 338668	Ship To #: 2713360	Quote #:	Sales Order #: 6585514
Customer: CHEVRON - MID-CONTINENT EBIZ		Customer Rep: MORGAN, RANDY	
Well Name: SKR	Well #: 698-09-AV-17	API/UWI #: 05-045-17300	
Field: SKINNER RIDGE	City (SAP): PARACHUTE	County/Parish: Garfield	State: Colorado
Legal Description:			
Lat: N 0 deg. OR N 0 deg. 0 min. 0 secs.		Long: E 0 deg. OR E 0 deg. 0 min. 0 secs.	
Contractor: H&P 318	Rig/Platform Name/Num: H&P 318		
Job Purpose: Cement Production Casing			Ticket Amount:
Well Type: Development Well	Job Type: Cement Production Casing		
Sales Person: DUNNING, DUSTIN	Srv Supervisor: YOUNG, JEREMY	MBU ID Emp #: 418013	

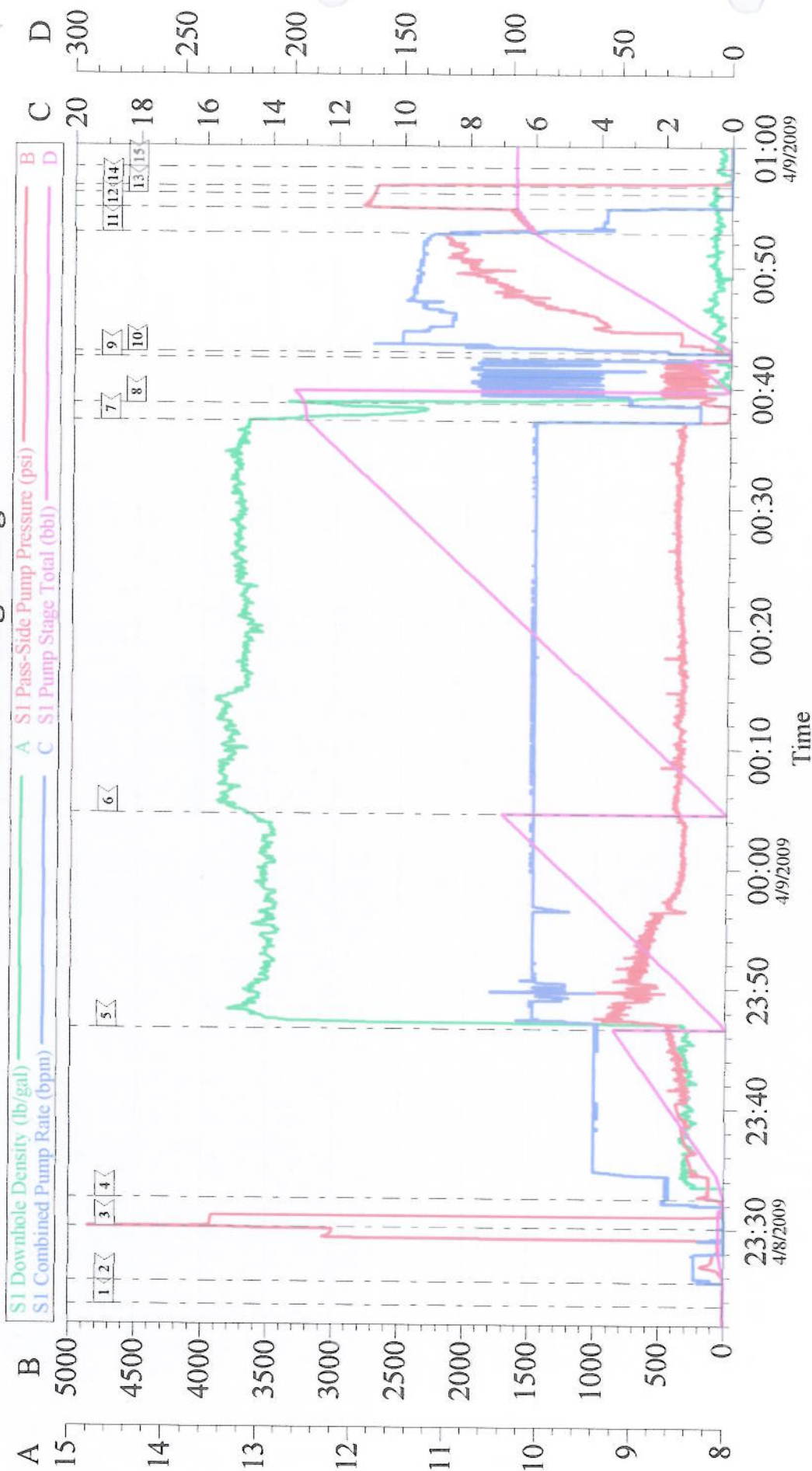
Activity Description	Date/Time	Cht #	Rate bbl/min	Volume bbl		Pressure psig		Comments
				Stage	Total	Tubing	Casing	
Call Out	04/08/2009 14:30							TD 6490 FT, TP 6462 FT, SHOE 45.9 FT, MUD WT. 9 PPG, HOLE 7 7/8 IN, CSG 4 1/2 IN 11.6 LB/FT
Pre-Convoy Safety Meeting	04/08/2009 15:30							WITH ALL HES PERSONNEL
Crew Leave Yard	04/08/2009 16:00							
Arrive At Loc	04/08/2009 17:30							RIG WAS STILL RUNNING CASING UPON HES ARRIVAL. RIG CIRCULATED 1 HR PRIOR TO CEMENTING. PIPE WAS NOT RECIPROCATED DURING CEMENTING. GOOD RETURNS THROUGHOUT ENTIRE CEMENT JOB
Assessment Of Location Safety Meeting	04/08/2009 17:45							WITH ALL HES PERSONNEL
Pre-Rig Up Safety Meeting	04/08/2009 18:00							WITH ALL HES PERSONNEL
Rig-Up Completed	04/08/2009 19:00							
Pre-Job Safety Meeting	04/08/2009 22:50							WITH ALL PERSONNEL ON LOCATION
Start Job	04/08/2009 23:23							RIG LOST ALL POWER FOR APPROX. 30 MIN. NO CIRCULATION DURING THAT TIME.
Pressure Test	04/08/2009 23:27						5000.0	



## Cementing Job Log

Activity Description	Date/Time	Cht #	Rate bbl/ min	Volume bbl		Pressure psig		Comments
				Stage	Total	Tubing	Casing	
Pump Spacer 1	04/08/2009 23:30		4	50			240.0	FRESH WATER WITH 10 LBS POLYEFLAKE AND 5 LBS RED DYE IN LAST 20 BBLS. BP- 16 PSI
Pump Lead Cement	04/08/2009 23:44		6	100			400.0	350 SKS AT 12.8 PPG, 1.6 FT3/SK, 7.31 GAL/SK BP-20PSI
Pump Tail Cement	04/09/2009 00:03		6	173			370.0	660 SKS AT 13.2 PPG, 1.47 FT3/SK, 6.32 GAL/SK BP- 18 PSI
Shutdown	04/09/2009 00:36							WASH PUMPS AND LINES TO PIT.
Drop Top Plug	04/09/2009 00:41							PLUG LAUNCHED
Pump Displacement	04/09/2009 00:42		10	99			2200. 0	
Slow Rate	04/09/2009 00:52		4	89			1540. 0	
Bump Plug	04/09/2009 00:54		4	99			2780. 0	PLUG BUMPED. PRESSURED UP 1000 PSI OVER AS PER CHEVRON.
Check Floats	04/09/2009 00:55							FLOATS HOLDING
End Job	04/09/2009 00:56							
Pre-Rig Down Safety Meeting	04/09/2009 01:05							WITH ALL HES PERSONNEL
Rig-Down Completed	04/09/2009 03:00							
Pre-Convoy Safety Meeting	04/09/2009 03:20							WITH ALL HES PERSONNEL
Crew Leave Location	04/09/2009 03:30							
Comment	04/09/2009 03:31							THANK YOU FOR USING HALLIBURTON CEMENT. JEREMY YOUNG AND CREW.

# 4.5" Production Longstring



## Local Event Log

1	START JOB	4/8/2009 23:23:38	2	PRIME LINES	4/8/2009 23:25:35	3	PRESSURE TEST	4/8/2009 23:30:05
4	PUMP SPACER	4/8/2009 23:32:31	5	PUMP LEAD CEMENT	4/8/2009 23:46:38	6	PUMP TAIL CEMENT	4/9/2009 00:04:33
7	SHUT DOWN	4/9/2009 00:37:13	8	WASH LINES	4/9/2009 00:38:40	9	DROP PLUG	4/9/2009 00:42:30
10	PUMP DISPLACEMENT	4/9/2009 00:42:57	11	SLOW RATE	4/9/2009 00:52:50	12	BUMP PLUG	4/9/2009 00:54:52
13	CHECK FLOATS	4/9/2009 00:56:05	14	RELEASE PRESSURE	4/9/2009 00:56:42	15	END JOB	4/9/2009 00:58:16

Customer: CHEVRON - MID-CONTINENT  
Well Description: Skinner Ridge 698-09-AV-17  
Company Rep: Randy Morgan

Job Date: 08-Apr-2009  
Job Type: Production  
Cement Supervisor: James Liest

Sales Order #: 6585514  
ADC Used: Yes  
Elite #/Operator: 3, Jesse Hayes