

HALLIBURTON

CHEVRON - MID-CONTINENT EBIZ

SKR 698-09-AV-16
SKINNER RIDGE
Garfield County , Colorado

Cement Production Casing
26-Apr-2009

Job Site Documents

The Road to Excellence Starts with Safety

Sold To #: 338668	Ship To #: 2713359	Quote #:	Sales Order #: 6634179
Customer: CHEVRON - MID-CONTINENT EBIZ		Customer Rep: MEIER, DAN	
Well Name: SKR	Well #: 698-09-AV-16	API/UWI #: 05-045-17287	
Field: SKINNER RIDGE	City (SAP): PARACHUTE	County/Parish: Garfield	State: Colorado
Lat: N 39.551 deg. OR N 39 deg. 33 min. 3.874 secs.		Long: W 108.33 deg. OR W -109 deg. 40 min. 12.515 secs.	
Contractor: H&P 318	Rig/Platform Name/Num: H & P 318		
Job Purpose: Cement Production Casing			
Well Type: Development Well		Job Type: Cement Production Casing	
Sales Person: DUNNING, DUSTIN	Srv Supervisor: DEROSA, JAY	MBU ID Emp #: 338788	

Job Personnel

HES Emp Name	Exp Hrs	Emp #	HES Emp Name	Exp Hrs	Emp #	HES Emp Name	Exp Hrs	Emp #
ANGLESTEIN, TROY Edward WM		436099	DEROSA, JAY M		338788	JAMISON, PRICE W		229155
PONDER, THOMAS Lynn		427112	Smith, Chris		452619	Wymys, Juan		456693

Equipment

HES Unit #	Distance-1 way	HES Unit #	Distance-1 way	HES Unit #	Distance-1 way	HES Unit #	Distance-1 way
10616651C	60 mile	10719786	60 mile	10829466	60 mile		

Job Hours

Date	On Location Hours	Operating Hours	Date	On Location Hours	Operating Hours	Date	On Location Hours	Operating Hours
TOTAL								

Total is the sum of each column separately

Job

Formation Name	Formation Depth (MD)	Top	Bottom	Form Type	Job depth MD	Job Depth TVD	Water Depth	Perforation Depth (MD)	From	To
				BHST	6400. ft	6400. ft				

Job Times

	Date	Time	Time Zone
Called Out	26 - Apr - 2009	08:15	MST
On Location	26 - Apr - 2009	12:30	MST
Job Started	26 - Apr - 2009	16:08	MST
Job Completed	26 - Apr - 2009	17:52	MST
Departed Loc	26 - Apr - 2009	19:30	MST

Well Data

Description	New / Used	Max pressure psig	Size in	ID in	Weight lbm/ft	Thread	Grade	Top MD ft	Bottom MD ft	Top TVD ft	Bottom TVD ft
-------------	------------	-------------------	---------	-------	---------------	--------	-------	-----------	--------------	------------	---------------

Sales/Rental/3rd Party (HES)

Description	Qty	Qty uom	Depth	Supplier
PLUG, CMTG, TOP, 4 1/2, HWE, 3.65 MIN/4.14 MA	1	EA		
PORT. DAS W/CEMWIN; ACQUIRE W/HES, ZI	1	JOB		
ADC (AUTO DENSITY CTRL) SYS, /JOB, ZI	1	JOB		

Tools and Accessories

Type	Size	Qty	Make	Depth	Type	Size	Qty	Make	Depth	Type	Size	Qty	Make
Guide Shoe					Packer					Top Plug	4.5	1	
Float Shoe					Bridge Plug					Bottom Plug			
Float Collar					Retainer					SSR plug set			
Insert Float										Plug Container	4.5	1	
Stage Tool										Centralizers			

Miscellaneous Materials

Gelling Agt	Conc	Surfactant	Conc	Acid Type	Qty	Conc	%
Treatment Fld	Conc	Inhibitor	Conc	Sand Type	Size		

HALLIBURTON**Cementing Job Summary**

Fluid Data									
Stage/Plug #: 1									
Fluid #	Stage Type	Fluid Name	Qty	Qty uom	Mixing Density lbm/gal	Yield ft ³ /sk	Mix Fluid Gal/sk	Rate bbl/min	Total Mix Fluid Gal/sk
1	Dyed Polyflake Spacer		40	bbl	8.33	.0	.0	.0	
2	Lead Cement	VARICEM (TM) CEMENT (452009)	340	sacks	12.8	1.6	7.31	6.0	
3	Tail Cement	VARICEM (TM) CEMENT (452009)	660	sacks	13.2	1.47	6.32	6.0	
4	KCL DISPLACEMENT		98	bbl	8.4	.0	.0	.0	
Calculated Values		Pressures		Volumes					
Displacement	98	Shut In: Instant		Lost Returns	no	Cement Slurry	269.7	Pad	
Top Of Cement	Surface	5 Min		Cement Returns	no	Actual Displacement	98	Treatment	
Frac Gradient		15 Min		Spacers	40bbls	Load and Breakdown		Total Job	
Rates									
Circulating	Rig	Mixing	6	Displacement	10	Avg. Job			
Cement Left In Pipe	Amount 0 ft	Reason	Shoe Joint						
Frac Ring # 1 @	ID	Frac ring # 2 @	ID	Frac Ring # 3 @	ID	Frac Ring # 4 @	ID		
The Information Stated Herein Is Correct				Customer Representative Signature					

The Road to Excellence Starts with Safety

Sold To #: 338668	Ship To #: 2713359	Quote #:	Sales Order #: 6634179
Customer: CHEVRON - MID-CONTINENT EBIZ		Customer Rep: MEIER, DAN	
Well Name: SKR	Well #: 698-09-AV-16	API/UWI #: 05-045-17287	
Field: SKINNER RIDGE	City (SAP): PARACHUTE	County/Parish: Garfield	State: Colorado
Legal Description:			
Lat: N 39.551 deg. OR N 39 deg. 33 min. 3.874 secs.		Long: W 108.33 deg. OR W -109 deg. 40 min. 12.515 secs.	
Contractor: H&P 318	Rig/Platform Name/Num: H &P 318		
Job Purpose: Cement Production Casing		Ticket Amount:	
Well Type: Development Well	Job Type: Cement Production Casing		
Sales Person: DUNNING, DUSTIN	Srv Supervisor: DEROSA, JAY	MBU ID Emp #: 338788	

Activity Description	Date/Time	Cht #	Rate bbl/min	Volume bbl		Pressure psig		Comments
				Stage	Total	Tubing	Casing	
Call Out	04/26/2009 08:15							
Pre-Convoy Safety Meeting	04/26/2009 10:30							
Arrive At Loc	04/26/2009 12:30							Arrived on location 1.5 hours ahead of schedule.
Pre-Rig Up Safety Meeting	04/26/2009 12:30							
Rig-Up Equipment	04/26/2009 12:30							
Wait on Customer or Customer Sub-Contractor Equip	04/26/2009 13:30							Rig running remainder of casing.
Wait on Customer or Customer Sub-Contractor Equipm	04/26/2009 15:30							
Pre-Job Safety Meeting	04/26/2009 15:45							
Start Job	04/26/2009 16:08	1						
Other	04/26/2009 16:10	2	1	2				Prime lines
Test Lines	04/26/2009 16:12	3				5000.0		
Pump Spacer	04/26/2009 16:14	4	2	40		199.0		First 20 bbls fresh water. Last 20 bbls had red dye and poly-E-Flake.
Pump Lead Cement	04/26/2009 16:29	5	6	96.9		550.0		340 sks @ 12.8 ppg 1.6 ft3/sk 7.31 gal/sk
Pump Tail Cement	04/26/2009 16:48	6	6	172.8		351.0		660 sks @ 13.2 ppg 1.47 ft3/sk 6.32 gal/sk
Shutdown	04/26/2009 17:26	7						
Clean Lines	04/26/2009 17:28	8						

Sold To #: 338668

Ship To #: 2713359

Quote #:

Sales Order #:

6634179

SUMMIT Version: 7.20.130

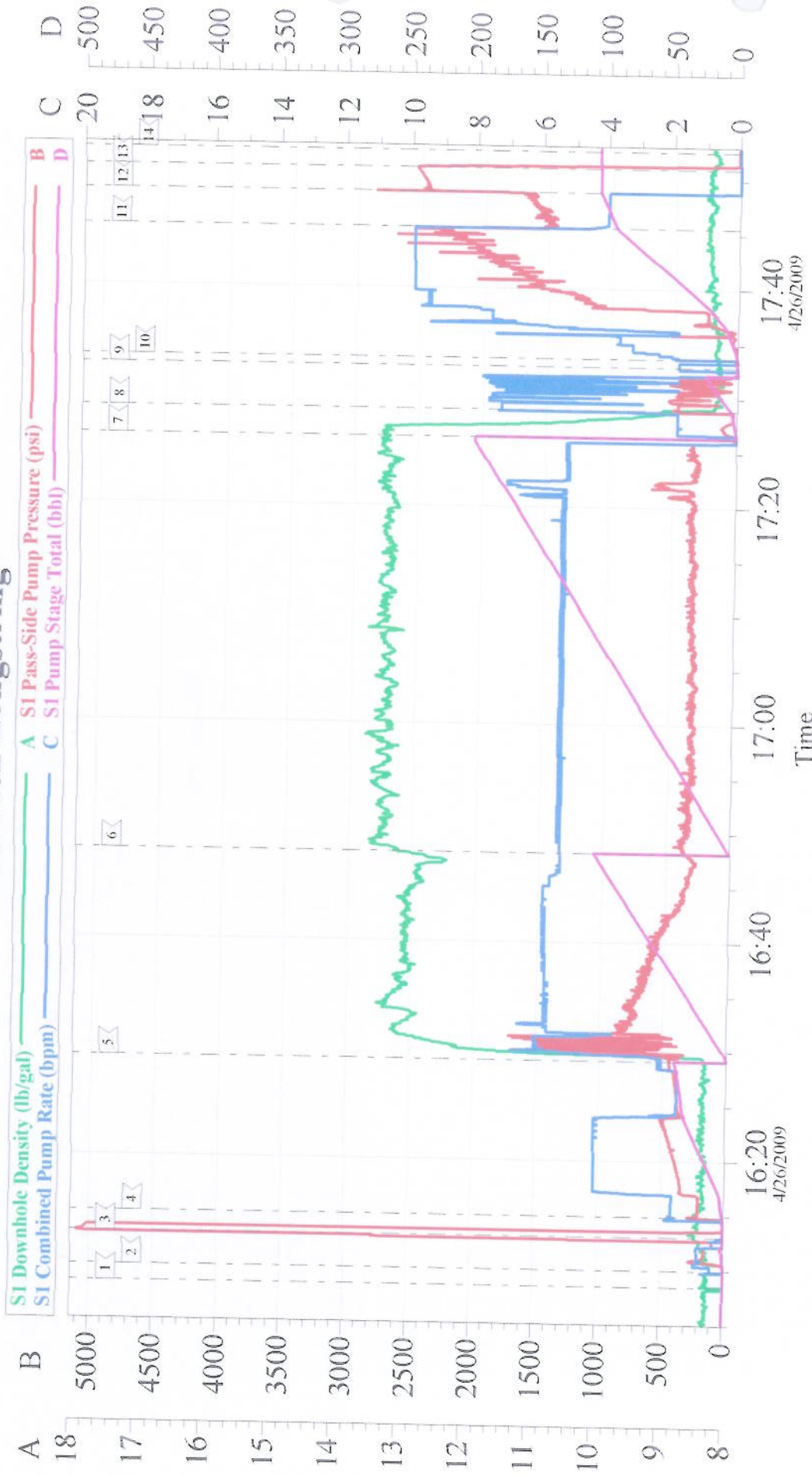
Sunday, April 26, 2009 06:48:00

Cementing Job Log

Activity Description	Date/Time	Cht #	Rate bbl/min	Volume bbl		Pressure psig		Comments
				Stage	Total	Tubing	Casing	
Drop Top Plug	04/26/2009 17:32	9						
Pump Displacement	04/26/2009 17:33	10	10				1105.0	KCL displacement 1 1/2 sks per 10 bbls of water.
Slow Rate	04/26/2009 17:45	11	4	85			1400.0	
Bump Plug	04/26/2009 17:48	12	4	96.9			2447.0	Plug down
Check Floats	04/26/2009 17:51	13						Floats held. Good return throughout entire job. Pipe was not reciprocated during the job.
End Job	04/26/2009 17:52	14						Thanks for using Halliburton, Jay DeRosa and crew.
Post-Job Safety Meeting (Pre Rig-Down)	04/26/2009 17:55							
Rig-Down Equipment	04/26/2009 18:00							
Pre-Convoy Safety Meeting	04/26/2009 19:30							
Depart Location for Service Center or Other Site	04/26/2009 19:30							

Signature _____

4.5 Inch Longstring



Customer: CHEVRON - MID-CONTINENT

Well Description: Skinner Ridge 698-09-AV-18

Company Rep: DaN Meier

Job Date: 26-Apr-2009

Job Type: Production

Cement Supervisor: Jay Derosa

Sales Order #: 6634179

ADC Used: Yes

Elite #/Operator: 4, Troy Angelstein