
CHEVRON - MID-CONTINENT EBIZ

**SKR 698-09-AV-16
PICEANCE
Garfield County , Colorado**

**Cement Surface Casing
15-Mar-2009**

Post Job Report

The Road to Excellence Starts with Safety

Sold To #: 338668		Ship To #: 2713359		Quote #:		Sales Order #: 6563247	
Customer: CHEVRON - MID-CONTINENT EBIZ				Customer Rep: TATUM, ELMER			
Well Name: SKR			Well #: 698-09-AV-16			API/UWI #: 05-045-17287	
Field: PICEANCE		City (SAP): PARACHUTE		County/Parish: Garfield		State: Colorado	
Lat: N 39.551 deg. OR N 39 deg. 33 min. 3.874 secs.				Long: W 108.33 deg. OR W -109 deg. 40 min. 12.515 secs.			
Contractor: H&P 318			Rig/Platform Name/Num: H&P318				
Job Purpose: Cement Surface Casing							
Well Type: Development Well				Job Type: Cement Surface Casing			
Sales Person: DUNNING, DUSTIN			Srvc Supervisor: ANDREWS, ANTHONY			MBU ID Emp #: 321604	

Job Personnel

HES Emp Name	Exp Hrs	Emp #	HES Emp Name	Exp Hrs	Emp #	HES Emp Name	Exp Hrs	Emp #
ANDREWS, ANTHONY Michael		321604	DICKEY, MATTHEW Allan		457739	KUKUS, CRAIG A		369124
TRIPLETT, MICHEAL Anthony		447908						

Equipment

HES Unit #	Distance-1 way	HES Unit #	Distance-1 way	HES Unit #	Distance-1 way	HES Unit #	Distance-1 way

Job Hours

Date	On Location Hours	Operating Hours	Date	On Location Hours	Operating Hours	Date	On Location Hours	Operating Hours
3/14/09	2	2	3/15/09	2.5	2			
TOTAL			Total is the sum of each column separately					

Job

Formation Name	Top	Bottom	Called Out	Date	Time	Time Zone
Formation Depth (MD)			On Location	14 - Mar - 2009	16:00	MST
Form Type		BHST	Job Started	14 - Mar - 2009	19:00	MST
Job depth MD	1050. ft	Job Depth TVD	Job Completed	14 - Mar - 2009	23:30	MST
Water Depth		Wk Ht Above Floor	Departed Loc	15 - Mar - 2009	00:22	MST
Perforation Depth (MD)	From	To		15 - Mar - 2009	02:30	MST

Well Data

Description	New / Used	Max pressure psig	Size in	ID in	Weight lbm/ft	Thread	Grade	Top MD ft	Bottom MD ft	Top TVD ft	Bottom TVD ft
-------------	------------	-------------------	---------	-------	---------------	--------	-------	-----------	--------------	------------	---------------

Sales/Rental/3rd Party (HES)

Description	Qty	Qty uom	Depth	Supplier
ADC (AUTO DENSITY CTRL) SYS, /JOB,ZI	1	JOB		
PORT. DAS W/CEMWIN;ACQUIRE W/HES, ZI	1	JOB		
PLUG,CMTG,TOP,8 5/8,HWE,7.20 MIN/8.09 MA	1	EA		

Tools and Accessories

Type	Size	Qty	Make	Depth	Type	Size	Qty	Make	Depth	Type	Size	Qty	Make
Guide Shoe					Packer					Top Plug			
Float Shoe					Bridge Plug					Bottom Plug			
Float Collar					Retainer					SSR plug set			
Insert Float										Plug Container			
Stage Tool										Centralizers			

Miscellaneous Materials

Gelling Agt	Conc	Surfactant	Conc	Acid Type	Qty	Conc	%
Treatment Fld	Conc	Inhibitor	Conc	Sand Type	Size	Qty	

Fluid Data										
Stage/Plug #: 1										
Fluid #	Stage Type	Fluid Name	Qty	Qty uom	Mixing Density lbm/gal	Yield ft ³ /sk	Mix Fluid Gal/sk	Rate bbl/min	Total Mix Fluid Gal/sk	
1	DYE SPACER		50	Bbl	.	.0	.0	.0		
2	Lead Cement	VERSACEM (TM) SYSTEM (452010)	140	Sacks	12.3	2.38	13.75			
3	Tail Cement	VERSACEM (TM) SYSTEM (452010)	155	sacks	12.8	2.11	11.75			
4	DISPLACEMENT		62.5	bbl	.	.0	.0	.0		
Calculated Values		Pressures		Volumes						
Displacement	62.5	Shut In: Instant		Lost Returns	N	Cement Slurry	117.5	Pad		
Top Of Cement	SURFACE	5 Min		Cement Returns	40	Actual Displacement	62.5	Treatment		
Frac Gradient		15 Min		Spacers	50	Load and Breakdown		Total Job	240	
Rates										
Circulating	RIG	Mixing	6	Displacement	8-2	Avg. Job	6			
Cement Left In Pipe	Amount	40.27 ft	Reason	Shoe Joint						
Frac Ring # 1 @	ID	Frac ring # 2 @	ID	Frac Ring # 3 @	ID	Frac Ring # 4 @	ID			
The Information Stated Herein Is Correct				Customer Representative Signature						

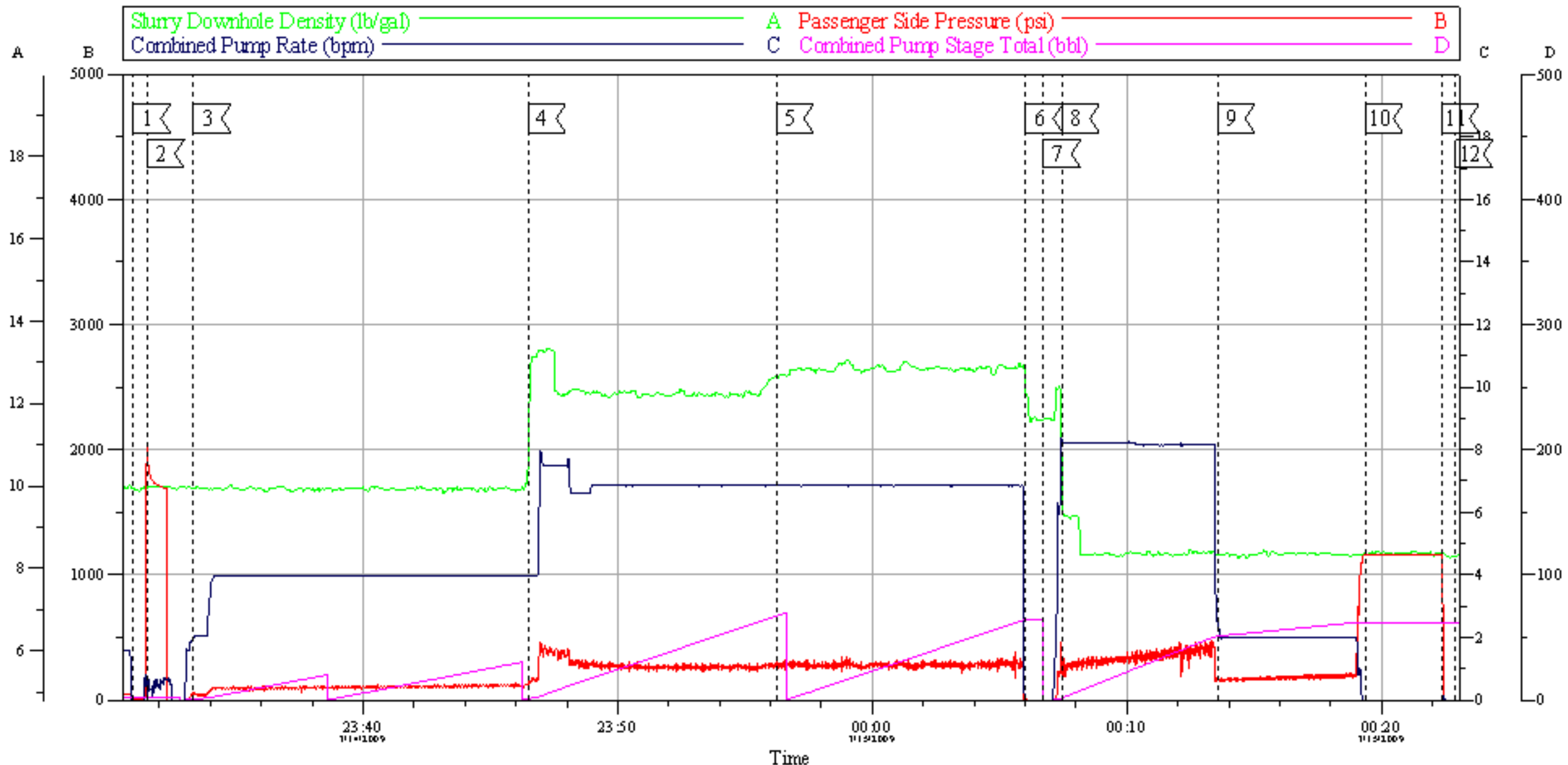
The Road to Excellence Starts with Safety

Sold To #: 338668		Ship To #: 2713359		Quote #:		Sales Order #: 6563247	
Customer: CHEVRON - MID-CONTINENT EBIZ				Customer Rep: TATUM, ELMER			
Well Name: SKR			Well #: 698-09-AV-16			API/UWI #: 05-045-17287	
Field: PICEANCE		City (SAP): PARACHUTE		County/Parish: Garfield			State: Colorado
Legal Description:							
Lat: N 39.551 deg. OR N 39 deg. 33 min. 3.874 secs.				Long: W 108.33 deg. OR W -109 deg. 40 min. 12.515 secs.			
Contractor: H&P 318			Rig/Platform Name/Num: H&P318				
Job Purpose: Cement Surface Casing						Ticket Amount:	
Well Type: Development Well			Job Type: Cement Surface Casing				
Sales Person: DUNNING, DUSTIN			Srvc Supervisor: ANDREWS, ANTHONY			MBU ID Emp #: 321604	

Activity Description	Date/Time	Cht #	Rate bbl/min	Volume bbl		Pressure psig		Comments
				Stage	Total	Tubing	Casing	
Call Out	03/14/2009 16:00							
Pre-Convoy Safety Meeting	03/14/2009 17:00							
Crew Leave Yard	03/14/2009 17:15							
Arrive At Loc	03/14/2009 19:00							
Assessment Of Location Safety Meeting	03/14/2009 19:05							
Other	03/14/2009 19:10							SPOT EQUIPMENT
Pre-Rig Up Safety Meeting	03/14/2009 22:00							
Rig-Up Equipment	03/14/2009 22:05							
Pre-Job Safety Meeting	03/14/2009 23:00							
Start Job	03/14/2009 23:30							TD: 1045 TP: 1023 SJ: 40.27 MW: 9.0PPG 8.625" 24#/FT CASING
Test Lines	03/14/2009 23:31							1500 PSI TEST
Pump Spacer	03/14/2009 23:33		4	50			62.0	50 BBLS 20 FRESH 30 WITH DYE AND POLYFLAKE
Pump Lead Cement	03/14/2009 23:46		6	59.3			129.0	140 SKS @ 12.3PPG 2.38YLD
Pump Tail Cement	03/14/2009 23:56		7	58.2			303.0	155 SKS @ 12.8 PPG 2.11YLD
Shutdown	03/15/2009 00:06							
Drop Plug	03/15/2009 00:06							

Activity Description	Date/Time	Cht #	Rate bbl/ min	Volume bbl		Pressure psig		Comments
				Stage	Total	Tubing	Casing	
Pump Displacement	03/15/2009 00:07		8		62.5		165.0	
Slow Rate	03/15/2009 00:13		2	50			170.0	
Bump Plug	03/15/2009 00:19		2	62.5			1164. 0	
Check Floats	03/15/2009 00:22							
End Job	03/15/2009 00:22							GOOD CIRCULATION THROUGHOUT JOB. PIPE WAS LEFT STATIC THROUGHOUT JOB. PIPE WAS HELD DOWN BY TOP DRIVE. CIRCULATED 40 BBLS CEMENT TO SURFACE. NO ADD HOURS CHARGED.
Post-Job Safety Meeting (Pre Rig-Down)	03/15/2009 00:45							PLUG BUMPED AT CALCULATED DISPLACEMENT. FLOATS HELD.
Rig-Down Equipment	03/15/2009 01:00							
Pre-Convoy Safety Meeting	03/15/2009 02:15							
Crew Leave Location	03/15/2009 02:30							THANK YOU FOR CHOOSING HALLUBRTON CEMENTING OF GRAND JUNCTION, COLORADO ANTHONY ANDREWS AND CREW

8 5/8" SURFACE



Intersection		Event Log		Intersection		PSP	
1	START JOB	3/14/2009 23:30:58	15.67	2	TEST LINES	3/14/2009 23:31:31	2004
3	PUMP SPACER	3/14/2009 23:33:20	62.23	4	PUMP LEAD CEMENT	3/14/2009 23:46:29	129.5
5	PUMP TAIL CEMENT	3/14/2009 23:56:13	303.1	6	SHUTDOWN	3/15/2009 00:06:01	0.061
7	DROP PLUG	3/15/2009 00:06:43	-4.626	8	PUMP DISPLACEMENT	3/15/2009 00:07:27	165.4
9	SLOW RATE	3/15/2009 00:13:33	170.7	10	BUMP PLUG	3/15/2009 00:19:22	1164
11	CHECK FLOATS	3/15/2009 00:22:22	1068	12	END JOB	3/15/2009 00:22:54	-9.935

Customer: CHEVRON
Lease: SKR
Well #: 698-09-AV-16

Job Date: 03/14/09
Supervisor: ANTHONY ANDREWS
Pump Truck 10871245

Ticket #: 6563247
ADC Used?: YES
Company Rep: ELMER TATUM

TG Version G3.4.1
15-Mar-09 00:51