

**CHEVRON - MID-CONTINENT EBIZ  
11111 S WILCREST DR - DO NOT MAIL  
HOUSTON, Texas**

SKR  
SKR 698-09-AV-15

**H&P 318/H&P/318**

## **Post Job Summary**

# **Cement Surface Casing**

Prepared for: ELMER TATUM  
Date Prepared: 03/11/09  
Version: 1

Service Supervisor: GALLEGOS, JASON

Submitted by:

**HALLIBURTON**

## The Road to Excellence Starts with Safety

Sold To #: 338668	Ship To #: 2713358	Quote #:	Sales Order #: 6557079
Customer: CHEVRON - MID-CONTINENT EBIZ		Customer Rep: TATUM, ELMER	
Well Name: SKR	Well #: 698-09-AV-15	API/UWI #: 05-045-17288	
Field: SKINNER RIDGE	City (SAP): PARACHUTE	County/Parish: Garfield	State: Colorado
Lat: N 39.551 deg. OR N 39 deg. 33 min. 3.91 secs.		Long: W 108.33 deg. OR W -109 deg. 40 min. 12.634 secs.	
Contractor: H&P 318	Rig/Platform Name/Num: H&P318		
Job Purpose: Cement Surface Casing			
Well Type: Development Well		Job Type: Cement Surface Casing	
Sales Person: DUNNING, DUSTIN	Srvc Supervisor: GALLEGOS, JASON	MBU ID Emp #: 386647	

## Job Personnel

HES Emp Name	Exp Hrs	Emp #	HES Emp Name	Exp Hrs	Emp #	HES Emp Name	Exp Hrs	Emp #
CARPENTER, MARK Alan	5.5	442360	CLARKE, GERALD C	5.5	441763	GALLEGOS, JASON Michael	5.5	386647
HANSEN, TED	5.5	396847	SAUTER, MARK A	5.5	410526	WEAVER, RUSTY	5.5	457698

## Equipment

HES Unit #	Distance-1 way	HES Unit #	Distance-1 way	HES Unit #	Distance-1 way	HES Unit #	Distance-1 way
10829462	120 MILES	10985907	120 MILES	10897909	120 MILES	10872429	120 MILES
10822007	120 MILES	10783793	120 MILES				

## Job Hours

Date	On Location Hours	Operating Hours	Date	On Location Hours	Operating Hours	Date	On Location Hours	Operating Hours
03/11/09	5	3	03/12/09	.5	.5			

TOTAL Total is the sum of each column separately

## Job

Formation Name	Job Times	Date	Time	Time Zone
Formation Depth (MD) Top 0 Bottom 1060	Called Out	11 - Mar - 2009	13:00	MST
Form Type BHST	On Location	11 - Mar - 2009	19:00	MST
Job depth MD 1045. ft Job Depth TVD 1060. ft	Job Started	11 - Mar - 2009	21:00	MST
Water Depth Wk Ht Above Floor 5. ft	Job Completed	11 - Mar - 2009	21:54	MST
Perforation Depth (MD) From To	Departed Loc	12 - Mar - 2009	00:30	MST

## Well Data

Description	New / Used	Max pressure psig	Size in	ID in	Weight lbm/ft	Thread	Grade	Top MD ft	Bottom MD ft	Top TVD ft	Bottom TVD ft
12 1/4 Open Hole				12.25					1060.		
8 5/8 Surface Casing	NEW		8.625	8.097	24.				1045.		

Sales/Rental/3<sup>rd</sup> Party (HES)

Description	Qty	Qty uom	Depth	Supplier
PORT. DAS W/CEMWIN;ACQUIRE W/HES, ZI	1	JOB		
ADC (AUTO DENSITY CTRL) SYS, /JOB,ZI	1	JOB		
PLUG,CMTG,TOP,8 5/8,HWE,7.20 MIN/8.09 MA	1	EA		

## Tools and Accessories

Type	Size	Qty	Make	Depth	Type	Size	Qty	Make	Depth	Type	Size	Qty	Make
Guide Shoe					Packer					Top Plug	8.625	1	
Float Shoe					Bridge Plug					Bottom Plug			
Float Collar					Retainer					SSR plug set			
Insert Float										Plug Container	8.625	1	
Stage Tool										Centralizers			

## Miscellaneous Materials

Gelling Agt	Conc	Surfactant	Conc	Acid Type	Qty	Conc	%
Treatment Fld	Conc	Inhibitor	Conc	Sand Type	Size	Qty	



Fluid Data									
Stage/Plug #: 1									
Fluid #	Stage Type	Fluid Name	Qty	Qty uom	Mixing Density lbm/gal	Yield ft <sup>3</sup> /sk	Mix Fluid Gal/sk	Rate bbl/min	Total Mix Fluid Gal/sk
1	DYE SPACER WITH POLYFLAKE		50	bbl	8.33	.0	.0	6	
2	Lead Cement	VERSACEM (TM) SYSTEM (452010)	140	sacks	12.3	2.37	13.76	6	13.42
		13.418 Gal							
3	Tail Cement	VERSACEM (TM) SYSTEM (452010)	155	sacks	12.8	2.11	11.75	6	11.46
		11.456 Gal							
4	H2O DISPLACEMENT		63.8	bbl	8.33	.0	.0	8	
Calculated Values		Pressures		Volumes					
Displacement	63.8	Shut In: Instant		Lost Returns	NONE	Cement Slurry	117.3	Pad	
Top Of Cement	SURFACE	5 Min		Cement Returns	20	Actual Displacement	63.8	Treatment	
Frac Gradient		15 Min		Spacers	50	Load and Breakdown		Total Job	231.1
Rates									
Circulating		Mixing	6	Displacement	8	Avg. Job	7		
Cement Left In Pipe	Amount	41.35 ft	Reason	Shoe Joint					
Frac Ring # 1 @	ID	Frac ring # 2 @	ID	Frac Ring # 3 @	ID	Frac Ring # 4 @	ID		
The Information Stated Herein Is Correct				Customer Representative Signature					

*The Road to Excellence Starts with Safety*

Sold To #: 338668		Ship To #: 2713358		Quote #:		Sales Order #: 6557079	
Customer: CHEVRON - MID-CONTINENT EBIZ				Customer Rep: TATUM, ELMER			
Well Name: SKR			Well #: 698-09-AV-15		API/UWI #: 05-045-17288		
Field: SKINNER RIDGE		City (SAP): PARACHUTE		County/Parish: Garfield		State: Colorado	
Legal Description:							
Lat: N 39.551 deg. OR N 39 deg. 33 min. 3.91 secs.				Long: W 108.33 deg. OR W -109 deg. 40 min. 12.634 secs.			
Contractor: H&P 318			Rig/Platform Name/Num: H&P318				
Job Purpose: Cement Surface Casing						Ticket Amount:	
Well Type: Development Well			Job Type: Cement Surface Casing				
Sales Person: DUNNING, DUSTIN			Srvc Supervisor: GALLEGOS, JASON		MBU ID Emp #: 386647		

Activity Description	Date/Time	Cht #	Rate bbl/min	Volume bbl		Pressure psig		Comments
				Stage	Total	Tubing	Casing	
Call Out	03/11/2009 13:00							
Depart Yard Safety Meeting	03/11/2009 14:20							ATTENDED BY ENTIRE HES CREW
Crew Leave Yard	03/11/2009 14:30							
Arrive At Loc	03/11/2009 16:30							RIG RUNNING CASING
Assessment Of Location Safety Meeting	03/11/2009 16:40							ATTENDED BY ENTIRE HES CREW
Other	03/11/2009 16:50							SPOT EQUIPMENT
Pre-Rig Up Safety Meeting	03/11/2009 19:50							ATTENDED BY ENTIRE HES CREW
Rig-Up Equipment	03/11/2009 20:00							
Pre-Job Safety Meeting	03/11/2009 20:30							ATTENDED BY ENTIRE HES CREW AND ENTIRE RIG CREW
Start Job	03/11/2009 21:00							TP 1045', TD 1060', SJ 41.35', MW 9#, CASING 8.625" 24# J55, HOLE 12 1/4"
Test Lines	03/11/2009 21:01		2	2			3000.0	PRESSURE HELD
Pump Spacer 1	03/11/2009 21:04		6	30			232.0	FRESH WATER
Pump Spacer 2	03/11/2009 21:13		6	20			223.0	POLYFLAKE & DYE
Pump Lead Cement	03/11/2009 21:17		6	59.1			278.0	140 SACKS, MIXED @ 12.3 PPG, 2.37 YIELD, 13.76 GAL/SK (BP 15)
Pump Tail Cement	03/11/2009 21:26		6	58.2			241.0	155 SACKS, MIXED @ 12.8 PPG, 2.11 YIELD, 11.75 GAL/SK (BP 15)

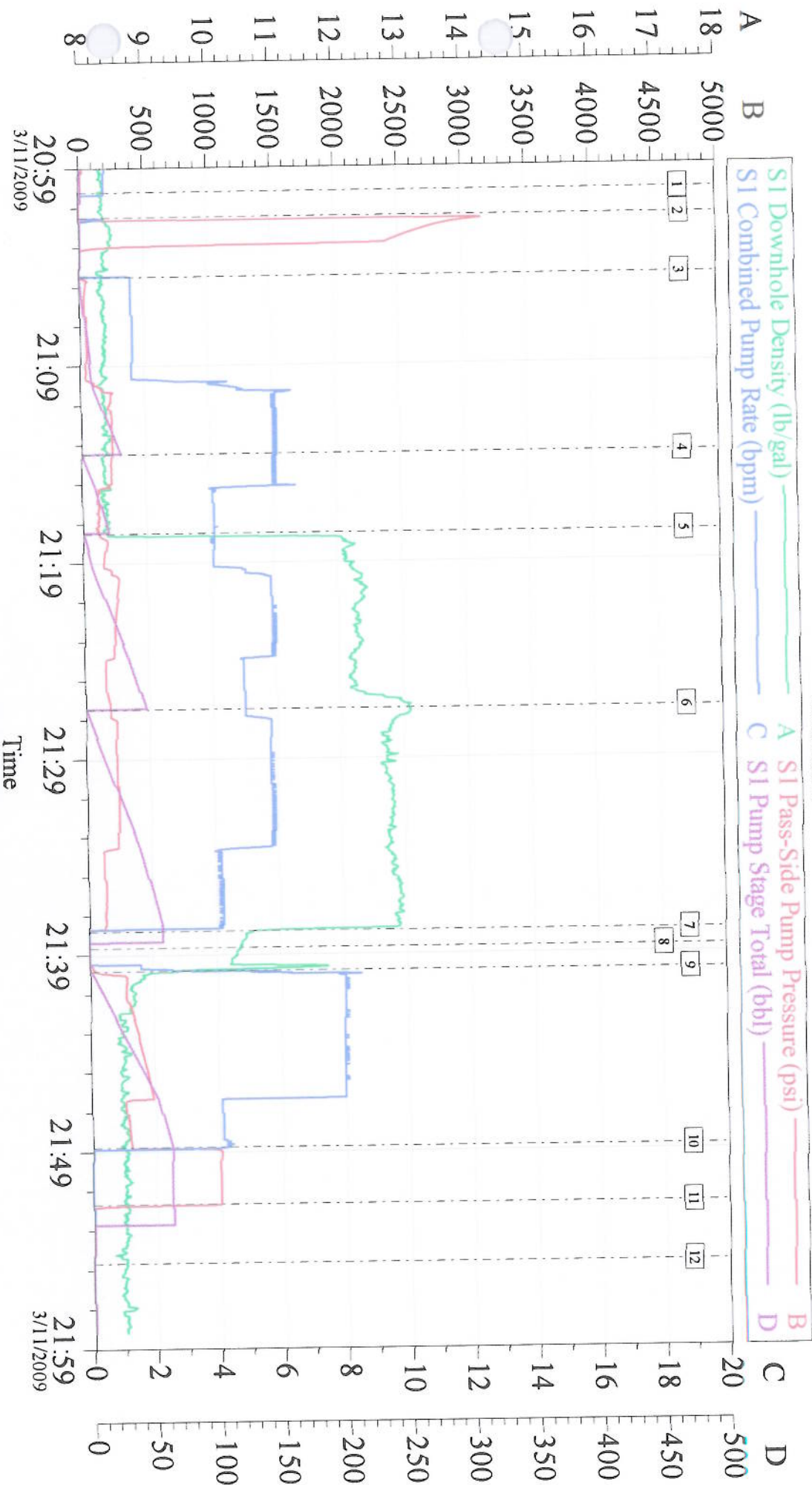


## Cementing Job Log

Activity Description	Date/Time	Cht #	Rate bbl/min	Volume bbl		Pressure psig		Comments
				Stage	Total	Tubing	Casing	
Shutdown	03/11/2009 21:37							
Drop Top Plug	03/11/2009 21:38							PLUG LAUNCHED
Pump Displacement	03/11/2009 21:39		8				500.0	FRESH WATER
Slow Rate	03/11/2009 21:47		4	53			485.0	
Bump Plug	03/11/2009 21:49		4	63.8			320.0	PRESSURED UP TP 1000 PSI.
Check Floats	03/11/2009 21:51							FLOATS HELD
End Job	03/11/2009 21:54							PIPE WAS NOT MOVED DURING JOB. GOOD CIRCULATION THROUGHOUT JOB. BBLs OF CEMENT TO SURFACE.
Post-Job Safety Meeting (Pre Rig-Down)	03/11/2009 21:55							ATTENDED BY ENTIRE HES CREW
Rig-Down Equipment	03/11/2009 22:05							
Depart Location Safety Meeting	03/12/2009 00:20							ATTENDED BY ENTIRE HES CREW
Crew Leave Location	03/12/2009 00:30							THANK YOU FOR USING HALLIBURTON CEMENT, JASON GALLEGOS AND CREW.

X

# Chevron Surface



Customer: Chevron  
Well Description: SKR 698-09-AV-15  
Company Rep: Elmer Tatum

Job Date: 11-Mar-2009  
Job Type: Surface  
Cement Supervisor: Jason Gallegos

Sales Order #: 6557079  
ADC Used: Yes  
Elite #: 11