

HALLIBURTON

CHEVRON - MID-CONTINENT EBIZ

SKR 698-09-AV-14
SKINNER RIDGE
Garfield County , Colorado

Cement Production Casing

28-Apr-2009

Job Site Documents

The Road to Excellence Starts with Safety

Sold To #: 338668	Ship To #: 2713357	Quote #:	Sales Order #: 6641905
Customer: CHEVRON - MID-CONTINENT EBIZ	Customer Rep: MEIER, DAN		
Well Name: SKR	Well #: 698-09-AV-14	API/UWI #: 05-045-17289	
Field: SKINNER RIDGE	City (SAP): PARACHUTE	County/Parish: Garfield	State: Colorado
Lat: N 39.551 deg. OR N 39 deg. 33 min. 3.805 secs.	Long: W 108.33 deg. OR W -109 deg. 40 min. 12.547 secs.		
Contractor: H&P 318	Rig/Platform Name/Num: H & P 318		
Job Purpose: Cement Production Casing			
Well Type: Development Well	Job Type: Cement Production Casing		
Sales Person: DUNNING, DUSTIN	Srv Supervisor: DEROSA, JAY	MBU ID Emp #: 338788	

Job Personnel

HES Emp Name	Exp Hrs	Emp #	HES Emp Name	Exp Hrs	Emp #	HES Emp Name	Exp Hrs	Emp #
ANGLESTEIN, TROY		436099	DEROSA, JAY M		338788	JAMISON, PRICE W		229155
Edward WM								
PONDER, THOMAS		427112	Smith, Chris		452619	TALAROVICH, JEREMY Jay		425449
Lynn								

Equipment

HES Unit #	Distance-1 way	HES Unit #	Distance-1 way	HES Unit #	Distance-1 way	HES Unit #	Distance-1 way
10616651C	60 mile	10829466	60 mile				

Job Hours

Date	On Location Hours	Operating Hours	Date	On Location Hours	Operating Hours	Date	On Location Hours	Operating Hours
4-28-09	4	2						
TOTAL			Total is the sum of each column separately					

Job

Formation Name	Top	Bottom	Called Out	Date	Time	Time Zone
Formation Depth (MD)			On Location	28 - Apr - 2009	14:00	MST
Form Type	BHST		Job Started	28 - Apr - 2009	18:30	MST
Job depth MD	6310. ft	Job Depth TVD	Job Completed	28 - Apr - 2009	20:58	MST
Water Depth		Wk Ht Above Floor	Departed Loc	28 - Apr - 2009	22:45	MST
Perforation Depth (MD)	From	To		29 - Apr - 2009	00:30	MST

Well Data

Description	New / Used	Max pressure psig	Size in	ID in	Weight lbm/ft	Thread	Grade	Top MD ft	Bottom MD ft	Top TVD ft	Bottom TVD ft
-------------	------------	-------------------	---------	-------	---------------	--------	-------	-----------	--------------	------------	---------------

Sales/Rental/3rd Party (HES)

Description	Qty	Qty uom	Depth	Supplier
PLUG,CMTG,TOP,4 1/2,HVE,3.65 MIN/4.14 MA	1	EA		
PORT. DAS W/CEMWIN;ACQUIRE W/HES, ZI	1	JOB		
ADC (AUTO DENSITY CTRL) SYS. /JOB.ZI	1	JOB		

Tools and Accessories

Type	Size	Qty	Make	Depth	Type	Size	Qty	Make	Depth	Type	Size	Qty	Make
Guide Shoe					Packer					Top Plug	4.5	1	
Float Shoe					Bridge Plug					Bottom Plug			
Float Collar					Retainer					SSR plug set			
Insert Float										Plug Container	4.5	1	
Stage Tool										Centralizers			

Miscellaneous Materials

Gelling Agt	Conc	Surfactant	Conc	Acid Type	Qty	Conc	%
Treatment Fid	Conc	Inhibitor	Conc	Sand Type	Size	Qty	

HALLIBURTON**Cementing Job Summary**

Fluid Data									
Stage/Plug #: 1									
Fluid #	Stage Type	Fluid Name	Qty	Qty uom	Mixing Density lbrn/gal	Yield ft ³ /sk	Mix Fluid Gal/sk	Rate bbl/min	Total Mix Fluid Gal/sk
1	Dyed Polyflake Spacer		40	bbl	8.33	.0	.0	.0	
2	Lead Cement	VARICEM (TM) CEMENT (452009)	335	sacks	12.8	1.6	7.31	6.0	
3	Tail Cement	VARICEM (TM) CEMENT (452009)	660	sacks	13.2	1.47	6.32	6.0	
4	KCL DISPLACEMENT		96.7	bbl	8.4	.0	.0	.0	
Calculated Values		Pressures		Volumes					
Displacement	96.7	Shut In: Instant		Lost Returns	no	Cement Slurry	268.0	Pad	
Top Of Cement	Surface	5 Min		Cement Returns	no	Actual Displacement	96.7	Treatment	
Frac Gradient		15 Min		Spacers	40bbls	Load and Breakdown		Total Job	
Rates									
Circulating	Rig	Mixing	6	Displacement	10	Avg. Job			
Cement Loft In Pipe	Amount	47.69 ft	Reason	Shoe Joint					
Frac Ring # 1 @	ID	Frac ring # 2 @	ID	Frac Ring # 3 @	ID	Frac Ring # 4 @	ID		
The Information Stated Herein Is Correct				Customer Representative Signature					

The Road to Excellence Starts with Safety

Sold To #: 338668	Ship To #: 2713357	Quote #:	Sales Order #: 6641905
Customer: CHEVRON - MID-CONTINENT EBIZ	Customer Rep: MEIER, DAN		
Well Name: SKR	Well #: 698-09-AV-14	API/UWI #: 05-045-17289	
Field: SKINNER RIDGE	City (SAP): PARACHUTE	County/Parish: Garfield	State: Colorado
Legal Description:			
Lat: N 39.551 deg. OR N 39 deg. 33 min. 3.805 secs.		Long: W 108.33 deg. OR W -109 deg. 40 min. 12.547 secs.	
Contractor: H&P 318	Rig/Platform Name/Num: H & P 318		
Job Purpose: Cement Production Casing	Ticket Amount:		
Well Type: Development Well	Job Type: Cement Production Casing		
Sales Person: DUNNING, DUSTIN	Srvs Supervisor: DEROSA, JAY	MBU ID Emp #: 338788	

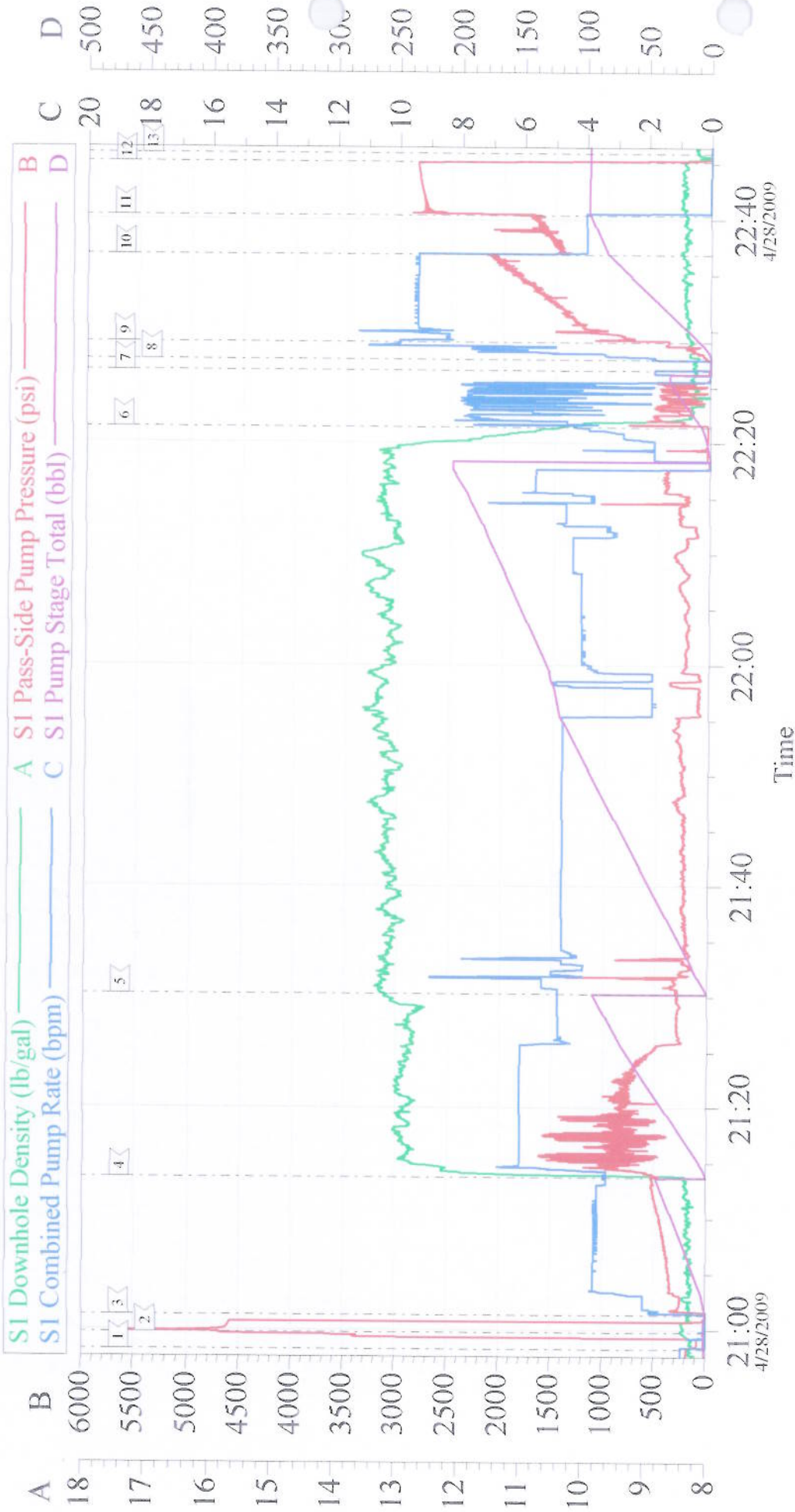
Activity Description	Date/Time	Cht #	Rate bbl/ min	Volume bbl		Pressure psig		Comments
				Stage	Total	Tubing	Casing	
Call Out	04/28/2009 14:00							
Pre-Convoy Safety Meeting	04/28/2009 16:00							
Arrive At Loc	04/28/2009 18:30							Arrived at location at 1830
Pre-Rig Up Safety Meeting	04/28/2009 18:30							
Rig-Up Equipment	04/28/2009 18:30							
Wait on Customer or Customer Sub-Contractor Equip	04/28/2009 19:30							Rig running remainder of casing
Wait on Customer or Customer Sub-Contractor Equipm	04/28/2009 20:30							
Pre-Job Safety Meeting	04/28/2009 20:30							
Start Job	04/28/2009 20:58	1						
Test Lines	04/28/2009 20:59	2					5000. 0	
Pump Spacer	04/28/2009 21:01	3	2	40			244.0	20 bbls frsh Water. 20 bbls fresh Water with red dye and Poly-E-Flake 6x5 pressure @ 10 psi
Pump Lead Cement	04/28/2009 21:13	4	6	95.5			740.0	335 sks @ 12.8 ppg 1.6 ft3/sk 7.31 gal/sk 6x5 pressure @ 14 psi
Pump Tail Cement	04/28/2009 21:30	5	5	172.8			285.0	660 sks @ 13.2 ppg 1.47 ft3/sk 6.32 gal/sk 6x5 pressure @ 17 psi
Clean Lines	04/28/2009 22:21	6						
Drop Top Plug	04/28/2009 22:26	7						

Activity Description	Date/Time	Cht #	Rate bbl/ min	Volume bbl		Pressure psig		Comments
				Stage	Total	Tubing	Casing	
Pump Displacement	04/28/2009 22:27	8	10				410.0	KCL water
Other	04/28/2009 22:29	9	10	15			786.0	Catch Cement
Slow Rate	04/28/2009 22:36	10	4	85			1456. 0	
Bump Plug	04/28/2009 22:40	11	4	96.7			2717. 0	Plug Down
Check Floats	04/28/2009 22:45	12						Floats Held. Good returns throughout entire job. Pipe was no reciprocated during job.
End Job	04/28/2009 22:45	13						Thanks for using Halliburton, Jay DeRosa and crew.
Post-Job Safety Meeting (Pre Rig-Down)	04/28/2009 22:50							
Rig-Down Equipment	04/28/2009 23:00							
Pre-Convoy Safety Meeting	04/29/2009 00:30							
Depart Location for Service Center or Other Site	04/29/2009 00:30							

Signature _____

Chevron

4 1/2 Production



Customer: Chevron
Well Description: 4.5 production
Company Rep: Dan Meier

Job Date: 28-Apr-2009
Operator: Chris Smith
Cement Supervisor: Jay DeRosa

Sales Order #: 6641905
ADC Used: Yes
Elite #: 4