
CHEVRON - MID-CONTINENT EBIZ

SKR 698-09-AV-14
SKINNER RIDGE
Garfield County , Colorado

Cement Surface Casing
20-Mar-2009

Job Site Documents

The Road to Excellence Starts with Safety

Sold To #: 338668	Ship To #: 2713357	Quote #:	Sales Order #: 6566902
Customer: CHEVRON - MID-CONTINENT EBIZ		Customer Rep: TATUM, ELMER	
Well Name: SKR	Well #: 698-09-AV-14	API/UWI #: 05-045-17289	
Field: SKINNER RIDGE	City (SAP): PARACHUTE	County/Parish: Garfield	State: Colorado
Lat: N 39.551 deg. OR N 39 deg. 33 min. 3.805 secs.		Long: W 108.33 deg. OR W -109 deg. 40 min. 12.547 secs.	
Contractor: H&P 318	Rig/Platform Name/Num: H&P318		
Job Purpose: Cement Surface Casing			
Well Type: Development Well		Job Type: Cement Surface Casing	
Sales Person: DUNNING, DUSTIN	Srv Supervisor: ANDREWS, ANTHONY	MBU ID Emp #: 321604	

Job Personnel

HES Emp Name	Exp Hrs	Emp #	HES Emp Name	Exp Hrs	Emp #	HES Emp Name	Exp Hrs	Emp #
ANDREWS, ANTHONY Michael		321604	GREGORY, JON D		439067	HAMMOND, DENNIS C		287025
HOEFER, FREEMAN Dennis		369666	KUKUS, CRAIG A		369124	STEELE, BENJAMIN F		458599
WILKE, ANDREW J		398822						

Equipment

HES Unit #	Distance-1 way	HES Unit #	Distance-1 way	HES Unit #	Distance-1 way	HES Unit #	Distance-1 way

Job Hours

Date	On Location Hours	Operating Hours	Date	On Location Hours	Operating Hours	Date	On Location Hours	Operating Hours
3/19/09	4	2	3/20/09	1.5				

TOTAL Total is the sum of each column separately

Job

Job Times

Formation Name	Formation Depth (MD)	Top	Bottom	Form Type	Job depth MD	Job Depth TVD	Water Depth	Perforation Depth (MD)	From	To	Called Out	Date	Time	Time Zone
				BHST	1040. ft	1040. ft						19 - Mar - 2009	16:00	MST
											On Location	19 - Mar - 2009	20:00	MST
											Job Started	19 - Mar - 2009	23:14	MST
											Job Completed	20 - Mar - 2009	00:00	MST
											Departed Loc	20 - Mar - 2009	01:30	MST

Well Data

Description	New / Used	Max pressure psig	Size in	ID in	Weight lbm/ft	Thread	Grade	Top MD ft	Bottom MD ft	Top TVD ft	Bottom TVD ft
-------------	------------	-------------------	---------	-------	---------------	--------	-------	-----------	--------------	------------	---------------

Sales/Rental/3rd Party (HES)

Description	Qty	Qty uom	Depth	Supplier
PLUG,CMTG, TOP, 8 5/8, HWE, 7.20 MIN/8.09 MA	1	EA		
PORT. DAS W/CEMWIN; ACQUIRE W/HES, ZI	1	JOB		
ADC (AUTO DENSITY CTRL) SYS, /JOB, ZI	1	JOB		

Tools and Accessories

Type	Size	Qty	Make	Depth	Type	Size	Qty	Make	Depth	Type	Size	Qty	Make
Guide Shoe					Packer					Top Plug			
Float Shoe					Bridge Plug					Bottom Plug			
Float Collar					Retainer					SSR plug set			
Insert Float										Plug Container			
Stage Tool										Centralizers			

Miscellaneous Materials

Gelling Agt	Conc	Surfactant	Conc	Acid Type	Qty	Conc	%
Treatment Fld	Conc	Inhibitor	Conc	Sand Type	Size		Qty

Fluid Data									
Stage/Plug #: 1									
Fluid #	Stage Type	Fluid Name	Qty	Qty uom	Mixing Density lbm/gal	Yield ft ³ /sk	Mix Fluid Gal/sk	Rate bbl/min	Total Mix Fluid Gal/sk
1	DYE SPACER WITH POLYFLAKE		50	bbl	8.33	.0	.0	.0	
2	Lead Cement	VERSACEM (TM) SYSTEM (452010)	140	sacks	12.3	2.38	13.75		
3	Tail Cement	VERSACEM (TM) SYSTEM (452010)	155	sacks	12.8	2.11	11.75		
4	H2O DISPLACEMENT		62.1	bbl	8.33	.0	.0	.0	
Calculated Values		Pressures		Volumes					
Displacement	62.1	Shut In: Instant		Lost Returns	N	Cement Slurry	117.5	Pad	
Top Of Cement	SURFACE	5 Min		Cement Returns	20	Actual Displacement	62.1	Treatment	
Frac Gradient		15 Min		Spacers	50	Load and Breakdown		Total Job	229.6
Rates									
Circulating	RIG	Mixing	6	Displacement	8-2	Avg. Job	7		
Cement Left In Pipe	Amount	44.35 ft	Reason	Shoe Joint					
Frac Ring # 1 @	ID	Frac ring # 2 @	ID	Frac Ring # 3 @	ID	Frac Ring # 4 @	ID		
The Information Stated Herein Is Correct				Customer Representative Signature					

The Road to Excellence Starts with Safety

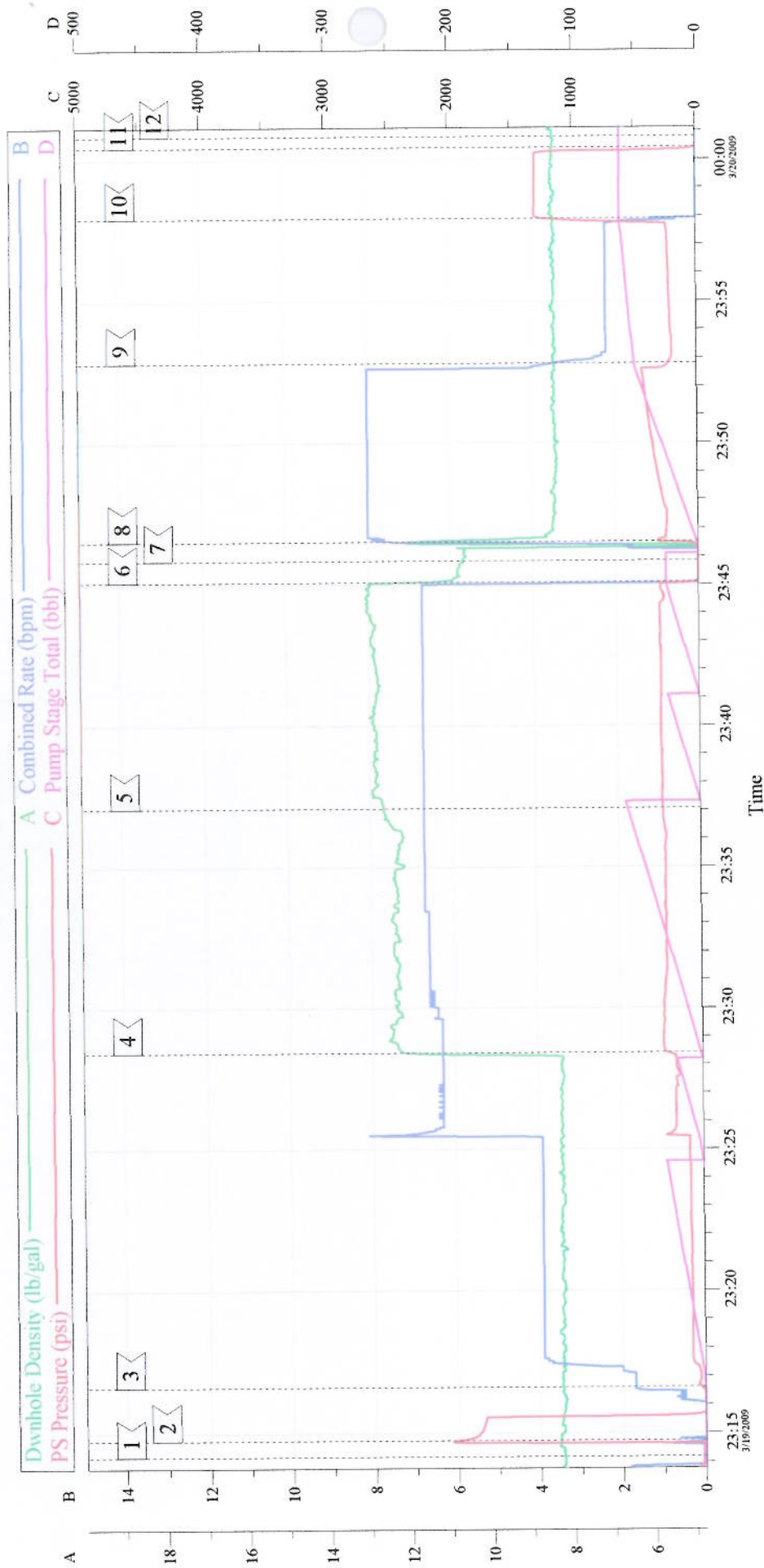
Sold To #: 338668	Ship To #: 2713357	Quote #:	Sales Order #: 6566902
Customer: CHEVRON - MID-CONTINENT EBIZ		Customer Rep: TATUM, ELMER	
Well Name: SKR	Well #: 698-09-AV-14	API/UWI #: 05-045-17289	
Field: SKINNER RIDGE	City (SAP): PARACHUTE	County/Parish: Garfield	State: Colorado
Legal Description:			
Lat: N 39.551 deg. OR N 39 deg. 33 min. 3.805 secs.		Long: W 108.33 deg. OR W -109 deg. 40 min. 12.547 secs.	
Contractor: H&P 318		Rig/Platform Name/Num: H&P318	
Job Purpose: Cement Surface Casing			Ticket Amount:
Well Type: Development Well		Job Type: Cement Surface Casing	
Sales Person: DUNNING, DUSTIN		Srv Supervisor: ANDREWS, ANTHONY	MBU ID Emp #: 321604

Activity Description	Date/Time	Cht #	Rate bbl/min	Volume bbl		Pressure psig		Comments
				Stage	Total	Tubing	Casing	
Call Out	03/19/2009 16:00							
Pre-Convoy Safety Meeting	03/19/2009 17:15							
Crew Leave Yard	03/19/2009 17:30							
Arrive At Loc	03/19/2009 20:00							
Assessment Of Location Safety Meeting	03/19/2009 20:05							
Other	03/19/2009 20:10							SPOT EQUIPMENT
Pre-Rig Up Safety Meeting	03/19/2009 20:15							
Rig-Up Equipment	03/19/2009 20:20							
Pre-Job Safety Meeting	03/19/2009 22:45							
Start Job	03/19/2009 23:14							TD: 1040 TP: 1020 SJ: 44.35 MW: 9.0PPG 8 5/8" 24#/FT CASING
Test Lines	03/19/2009 23:14							2000 PSI TEST
Pump Spacer	03/19/2009 23:16		4	50			45.0	30 BBLS FRESH H2O 20 BBL H2O W/ DYE AND POLY FLAKE
Pump Lead Cement	03/19/2009 23:28		6	59.3			282.0	140 SKS @ 12.3 PPG 2.38 YLD
Pump Tail Cement	03/19/2009 23:37		6	58.2			301.0	155 SKS @ 12.8 PPG 2.11 YLD
Shutdown	03/19/2009 23:45							
Drop Plug	03/19/2009 23:45							

Cementing Job Log

Activity Description	Date/Time	Cht #	Rate bbl/ min	Volume bbl		Pressure psig		Comments
				Stage	Total	Tubing	Casing	
Pump Displacement	03/19/2009 23:46		8		62.1		320.0	
Slow Rate	03/19/2009 23:52		2	50			233.0	
Bump Plug	03/19/2009 23:57		2	62.1			1255. 0	
Check Floats	03/20/2009 00:00							
End Job	03/20/2009 00:00							GOOD CIRCULATION THROUGHOUT JOB. PIPE WAS LEFT STATIC/ HELD DOWN BY TOP DRIVE THROUGHOUT JOB. NO ADD HOURS CHARGED. CIRCULATED 20 BBLS CEMENT TO PIT. PLUG BUMPED AT CALC DISP. FLOATS HELD.
Post-Job Safety Meeting (Pre Rig-Down)	03/20/2009 00:15							DENNIS HOEFER WAS DESIGNATED SAFETY OBSERVER FOR JOB.
Rig-Down Equipment	03/20/2009 00:30							
Pre-Convoy Safety Meeting	03/20/2009 01:25							
Crew Leave Location	03/20/2009 01:30							THANK YOU FOR CHOOSING HALLIBURTON CEMENTING OF GRAND JUNCTION, COLORADO ANTHONY ANDREWS AND CREW

8 5/8" SURFACE



Event Log			
Intersection		Intersection	
1< START JOB	3/19/2009 23:14:11	2< TEST LINES	3/19/2009 23:14:46
3< PUMP SPACER	3/19/2009 23:16:37	4< PUMP LEAD CEMENT	3/19/2009 23:28:25
5< PUMP TAIL CEMENT	3/19/2009 23:37:05	6< SHUTDOWN	3/19/2009 23:45:06
7< DROP PLUG	3/19/2009 23:45:51	8< PUMP DISPLACEMENT	3/19/2009 23:46:31
9< SLOW RATE	3/19/2009 23:52:49	10< BUMP PLUG	3/19/2009 23:57:55
11< CHECK FLOATS	3/20/2009 00:00:25	12< END JOB	3/20/2009 00:00:48
			-5.000

Customer: CHEVRON	Job Date: 3/19/09	Ticket #: 6566902
Lease: SKR	Supervisor: ANTHONY ANDREWS	ADC Used?: YES
Well #: 698-09-AV-14	Pump Truck: 10871245	Company Rep: ELMER TATUM