
OXY GRAND JUNCTION

**CC 697-05-42
GRAND VALLEY
Garfield County , Colorado**

Cement Surface Casing
10-Jan-2012

Post Job Report

The Road to Excellence Starts with Safety

Sold To #: 344034	Ship To #: 344034	Quote #:	Sales Order #: 9107157
Customer: OXY GRAND JUNCTION EBUSINESS	Customer Rep:		
Well Name: CC	Well #: 697-05-42	API/UWI #: 05-045-20373	
Field: GRAND VALLEY	City (SAP): ADDISON	County/Parish: Garfield	State: Colorado
Lat: N 39.554 deg. OR N 39 deg. 33 min. 16.02 secs.	Long: W 108.242 deg. OR W -109 deg. 45 min. 27.216 secs.		
Contractor: H&P Drilling	Rig/Platform Name/Num: H&P 353		
Job Purpose: Cement Surface Casing			
Well Type: Development Well	Job Type: Cement Surface Casing		
Sales Person: HIMES, JEFFREY	Srv Supervisor: KUKUS, CRAIG	MBU ID Emp #: 369124	

Job Personnel

HES Emp Name	Exp Hrs	Emp #	HES Emp Name	Exp Hrs	Emp #	HES Emp Name	Exp Hrs	Emp #
BURKE, BRENDAN Patrick	28	487782	KUKUS, CRAIG A	28	369124	ROMKEE, DALE Alan	28	488215
SMITH, DUSTIN Michael	28	418015						

Equipment

HES Unit #	Distance-1 way	HES Unit #	Distance-1 way	HES Unit #	Distance-1 way	HES Unit #	Distance-1 way
10867322	120 mile	10871245	120 mile	10998512	120 mile	11259883	120 mile
11360881	120 mile						

Job Hours

Date	On Location Hours	Operating Hours	Date	On Location Hours	Operating Hours	Date	On Location Hours	Operating Hours
1/9/12	10	5	1/10/12	18	5			

TOTAL	Total is the sum of each column separately							
--------------	--	--	--	--	--	--	--	--

Job

Formation Name	Top	Bottom	Called Out	Date	Time	Time Zone
Formation Depth (MD)			On Location	09 - Jan - 2012	07:30	MST
Form Type		BHST	Job Started	09 - Jan - 2012	14:00	MST
Job depth MD	2720. ft	Job Depth TVD	Job Completed	09 - Jan - 2012	19:10	MST
Water Depth		Wk Ht Above Floor	Departed Loc	10 - Jan - 2012	17:58	MST
Perforation Depth (MD)	From	To		10 - Jan - 2012	20:00	MST

Well Data

Description	New / Used	Max pressure psig	Size in	ID in	Weight lbm/ft	Thread	Grade	Top MD ft	Bottom MD ft	Top TVD ft	Bottom TVD ft
-------------	------------	-------------------	---------	-------	---------------	--------	-------	-----------	--------------	------------	---------------

Tools and Accessories

Type	Size	Qty	Make	Depth	Type	Size	Qty	Make	Depth	Type	Size	Qty	Make
Guide Shoe					Packer					Top Plug	9 5/8	1	HES
Float Shoe					Bridge Plug					Bottom Plug			
Float Collar					Retainer					SSR plug set			
Insert Float										Plug Container	9 5/8	1	HES
Stage Tool										Centralizers			

Miscellaneous Materials

Gelling Agt		Conc		Surfactant		Conc		Acid Type		Qty		Conc	%
Treatment Fld		Conc		Inhibitor		Conc		Sand Type		Size		Qty	

Fluid Data

Stage/Plug #: 1

Fluid #	Stage Type	Fluid Name	Qty	Qty uom	Mixing Density lbm/gal	Yield ft3/sk	Mix Fluid Gal/sk	Rate bbl/min	Total Mix Fluid Gal/sk
---------	------------	------------	-----	---------	------------------------	--------------	------------------	--------------	------------------------

Stage/Plug #: 1

Fluid #	Stage Type	Fluid Name	Qty	Qty uom	Mixing Density lbm/gal	Yield ft3/sk	Mix Fluid Gal/sk	Rate bbl/min	Total Mix Fluid Gal/sk
---------	------------	------------	-----	---------	------------------------	--------------	------------------	--------------	------------------------

Stage/Plug #: 1									
1	Water Spacer		20.00	bbl	8.33	.0	.0	4	
2	Gel Spacer		20.00	bbl	.	.0	.0	4	
3	Water Spacer		20.00	bbl	.	.0	.0	4	
4	VersaCem Lead Cement	VERSACEM (TM) SYSTEM (452010)	1060.0	sacks	12.3	2.33	12.62	6	12.62
12.62 Gal		FRESH WATER							
5	VersaCem Tail Cement	VERSACEM (TM) SYSTEM (452010)	160.0	sacks	12.8	2.07	10.67	6	10.67
10.67 Gal		FRESH WATER							
6	Displacement		202.00	bbl	.	.0	.0	8	
7	Topout Cement	HALCEM (TM) SYSTEM (452986)	500.0	sacks	12.5	1.97	10.96	2.8	10.96
10.96 Gal		FRESH WATER							
Calculated Values		Pressures		Volumes					
Displacement	202	Shut In: Instant		Lost Returns	450	Cement Slurry	499	Pad	
Top Of Cement	NON/TO SURFACE	5 Min		Cement Returns	0	Actual Displacement	200	Treatment	
Frac Gradient		15 Min		Spacers	60	Load and Breakdown		Total Job	762
Rates									
Circulating	RIG	Mixing	6	Displacement	8	Avg. Job	7		
Cement Left In Pipe	Amount	44.55 ft	Reason	Shoe Joint					
Frac Ring # 1 @	ID	Frac ring # 2 @	ID	Frac Ring # 3 @	ID	Frac Ring # 4 @	ID		
The Information Stated Herein Is Correct				Customer Representative Signature					

The Road to Excellence Starts with Safety

Sold To #: 344034	Ship To #: 344034	Quote #:	Sales Order #: 9107157
Customer: OXY GRAND JUNCTION EBUSINESS		Customer Rep:	
Well Name: CC	Well #: 697-05-42	API/UWI #: 05-045-20373	
Field: GRAND VALLEY	City (SAP): ADDISON	County/Parish: Garfield	State: Colorado
Legal Description:			
Lat: N 39.554 deg. OR N 39 deg. 33 min. 16.02 secs.		Long: W 108.242 deg. OR W -109 deg. 45 min. 27.216 secs.	
Contractor: H&P Drilling		Rig/Platform Name/Num: H&P 353	
Job Purpose: Cement Surface Casing			Ticket Amount:
Well Type: Development Well		Job Type: Cement Surface Casing	
Sales Person: HIMES, JEFFREY		Srv Supervisor: KUKUS, CRAIG	MBU ID Emp #: 369124

Activity Description	Date/Time	Cht #	Rate bbl/min	Volume bbl		Pressure psig		Comments
				Stage	Total	Tubing	Casing	
Call Out	01/09/2012 07:30							
Depart Yard Safety Meeting	01/09/2012 09:00							SAFETY MEETING INVOLVING THE ENTIRE CMT CREW
Pre-Rig Down Safety Meeting	01/09/2012 09:00							SAFETY MEETING INVOLVING THE ENTIRE CMT CREW
Arrive At Loc	01/09/2012 14:00							RIG RUNNING CSG / AND UNLOADING CSG
Assessment Of Location Safety Meeting	01/09/2012 14:10							ASSESSMENT OF LOCATION INVOLVING THE ENTIRE CMT CREW
Pre-Rig Up Safety Meeting	01/09/2012 15:30							SAFETY MEETING INVOLVING THE ENTIRE CMT CREW
Rig-Up Equipment	01/09/2012 15:40							RIG UP TO CELLAR AREA / OFF LINE CEMENT JOB
Circulate Well	01/09/2012 17:00							RIG CIRCULATE WELL
Pre-Job Safety Meeting	01/09/2012 18:45							SAFETY MEETING INVOLVING EVERYONE ON LOCATION
Start Job	01/09/2012 19:10							OFF LINE NUMBERS AS FOLLOWS: TD 2720 FT T.P 2700 FT -34.5 FT FOR LANDING JOINT SJ 44.55 FT PIPE 9 5/8 IN 36# J-55 OH 14 3/4 IN MUD WT 9.2#
Other	01/09/2012 19:14		2	2				FILL LINES WITH FRESH WATER

Activity Description	Date/Time	Cht #	Rate bbl/min	Volume bbl		Pressure psig		Comments
				Stage	Total	Tubing	Casing	
Pressure Test	01/09/2012 19:16		0.5			3500.0		PRESSURE TEST GOOD
Pump Spacer 1	01/09/2012 19:21		4	20			118.0	FRESH WATER SPACER
Pump Spacer 1	01/09/2012 19:26		4	20			119.0	PUMP GEL SPACER
Pump Spacer 1	01/09/2012 19:31		4	20			102.0	PUMP FRESH WATER SPACER
Pump Lead Cement	01/09/2012 19:36		6	439			187.0	PUMP 1060 SKS LEAD CEMENT AT 12.3 PPG 2.33 Y 12.62 GAL/SKS
Pump Tail Cement	01/09/2012 21:20		6	58.9			143.0	PUMP 160 SKS TAIL CEMENT AT 12.8 PPG 2.07 Y 10.67 GAL/SKS
Shutdown	01/09/2012 21:35							FINISHED CEMENT / SHUT DOWN /READY TO DROP PLUG
Drop Top Plug	01/09/2012 21:36							PLUG LEFT THE PLUG CONTAINER
Pump Displacement	01/09/2012 21:37		8	202.6			581.0	PUMP FRESH WATER DISPLACEMENT
Slow Rate	01/09/2012 22:02		2	92			255.0	SLOW RATE LAST 10 BBLS TO 2 BBL MIN
Bump Plug	01/09/2012 22:05		2	202			825.0	PLUG LANDED AT 250 PSI
Check Floats	01/09/2012 22:08							FLOATS HELD/ GOT 1/2 BBL BACK TO TANKS
Pressure Up Well	01/09/2012 22:09		0.8				1555.0	PRESSURE UPCSG AND HOLD FOR 30 MIN CSG TEST
Check Floats	01/09/2012 22:45							CHECK FLOATS / HELD
Pump Spacer 1	01/09/2012 22:51		1	10			625.0	PUMP 10 BBLS SUGAR WATER THRU PARASITE BROKE THRU AT 625 PSI 6 BBLS GONE
Shutdown	01/09/2012 23:00							SHUT DOWN /WASH UP/ HAD NO RETURNS THRU OUT THE JOB
End Job	01/09/2012 23:02							END SURFACE JOB/RIG UP FOR TOPOUT #1
Start Job	01/09/2012 23:34							START TOP OUT #1
Activity Description	Date/Time	Cht	Rate bbl/min	Volume bbl		Pressure psig		Comments

		#		Stage	Total	Tubing	Casing	
Pump Spacer 1	01/09/2012 23:37		2.5	1			25.0	WATER AHEAD / NOTE PER CHART SHOWS PRESSURE / PRESSURE NOT ON WELL - DOWN HOLE ON PUMP WAS NOT OPEN/ RELEASED PRESSURE AND WENT TO WATER AHEAD
Pump Cement	01/09/2012 23:37		2.5	50			112.0	PUMP 142.5 SKS TOP OUT CEMENT AT 12.5 PPG 1.97 Y 10.96 GAL/SKS
Other	01/09/2012 23:58		2.5	1			111.0	PUMP WATER BEHIND
Shutdown	01/09/2012 23:58							SHUT DOWN/WASH UP
End Job	01/09/2012 23:58							END TOP OUT #1
Start Job	01/10/2012 01:44							START TOP OUT #2
Pump Spacer 1	01/10/2012 01:47		2.8	1			66.0	PUMP WATER AHEAD
Pump Cement	01/10/2012 01:48		2.8	50			131.0	PUMP 142.5 SKS TOP OUT CEMENT AT 12.5 PPG 1.97 Y 10.96 GAL/SKS
Other	01/10/2012 02:05		2.8	1			112.0	PUMP WATER BEHIND
Shutdown	01/10/2012 02:06							SHUT / DOWN WASH UP
End Job	01/10/2012 02:07							END TOP OUT #2
Start Job	01/10/2012 03:58							START TOP OUT #3
Pump Spacer 1	01/10/2012 04:04		2.8	1			66.0	PUMP WATER AHEAD
Pump Cement	01/10/2012 04:05		2.8	48			117.0	PUMP 142.5 SKS TOP OUT CEMENT AT 12.5 PPG 1.97 Y 10.96 GAL/SKS
Other	01/10/2012 04:22		2.8	1			112.0	PUMP WATER BEHIND
Shutdown	01/10/2012 04:23							SHUT DOWN/WASH UP
End Job	01/10/2012 04:24							END TOP OUT #3
Start Job	01/10/2012 06:25							START TOP OUT #4

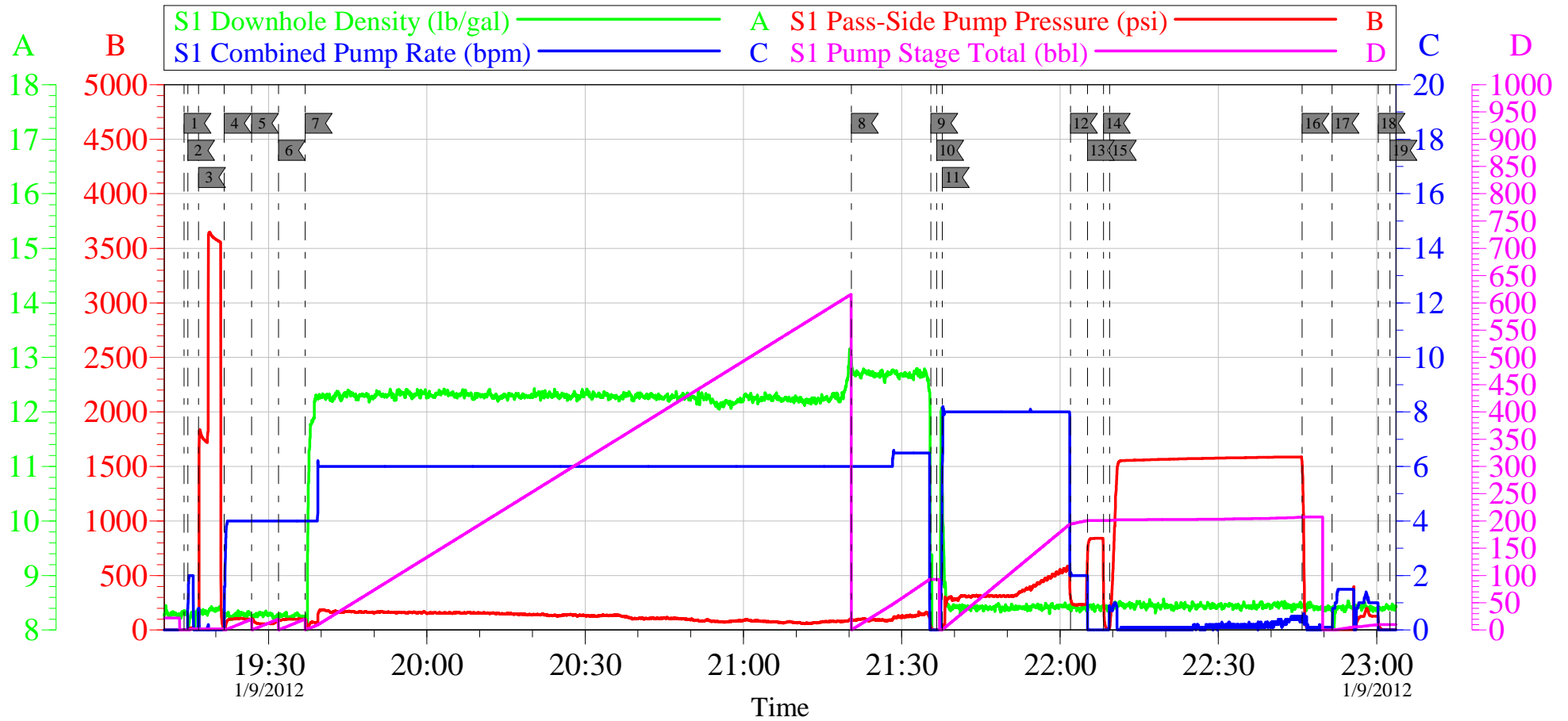
Activity Description	Date/Time	Cht #	Rate bbl/min	Volume bbl		Pressure psig		Comments
				Stage	Total	Tubing	Casing	
Pump Spacer 1	01/10/2012 06:27		2.8	1			67.0	PUMP WATER AHEAD
Pump Cement	01/10/2012 06:28		2.8	40			115.0	PUMP 114 SKS TOP OUT CEMENT AT 12.5 PPG 1.97 Y 10.96 GAL/SKS
Other	01/10/2012 06:42		2.8	1			112.0	PUMP WATER BEHIND
Shutdown	01/10/2012 06:42							SHUT DOWN/WASH UP
End Job	01/10/2012 06:43							END TOP OUT #4
Start Job	01/10/2012 15:49							START TOP OUT #5
Pump Spacer 1	01/10/2012 15:51		2.8	1			67.0	PUMP WATER AHEAD
Pump Cement	01/10/2012 15:52		2.8	50.6			119.0	PUMP 144.2 SKS TOPOUT CEMENT AT 12.5 PPG 1.97 Y 10.96 GAL/SKS / GOT CEMENT TO SURFACE SHUT DOWN AND HESITATED / PUMPED REMAINDER OF 50 BBLS NO CEMENT TO SURFACE
Shutdown	01/10/2012 16:07							SHUT DOWN / WOC / WASH UP
End Job	01/10/2012 16:08							END TOP OUT #5
Start Job	01/10/2012 17:28							START TOP OUT #6
Pump Spacer 1	01/10/2012 17:28		2.8	1			66.0	PUMP WATER AHEAD
Pump Cement	01/10/2012 17:29		2.8	29			99.0	PUMP 82.6 SKS TOP OUT CEMENT AT 12.5 PPG 1.97 Y 10.96 GAL/SKS /CEMENT TO SURFACE SHUT DOWN AND HESITATE 7 TIMES AND PUMP FINAL BBL TO SURFACE / TOTAL TO SURFACE 11 BBLS
Shutdown	01/10/2012 17:57							SHUT DOWN / WASH UP TO CELLAR AREA
End Job	01/10/2012 17:58							END TOP OUT #6

Cementing Job Log

Activity Description	Date/Time	Cht #	Rate bbl/ min	Volume bbl		Pressure psig		Comments
				Stage	Total	Tubing	Casing	
Safety Meeting - Pre Rig-Down	01/10/2012 18:00							ALL HES PRESENT
Rig-Down Equipment	01/10/2012 18:30							RIG DOWN/LOAD UP
Safety Meeting - Departing Location	01/10/2012 19:30							ALL HES PRESENT
Comment	01/10/2012 20:00							THANK YOU FOR USING HALLIBURTON CEMENT SERVICES AND THE CREW OF CRAIG KUKUS

OXY CC 697-05-42

9 5/8 SURFACE



Local Event Log

1 START JOB	19:14:01 2 PRIME LINES	19:14:42 3 PRESSURE TEST LINES	19:16:44
4 PUMP H2O SPACER	19:21:35 5 PUMP GEL SPACER	19:26:49 6 PUMP H2O SPACER	19:31:52
7 PUMP LEAD CEMENT	19:36:57 8 PUMP TAIL CEMENT	21:20:28 9 SHUT DOWN/END OF CEMENT	21:35:31
10 DROP PLUG	21:36:39 11 PUMP H2O DISPLACEMENT	21:37:41 12 SLOW RATE	22:02:00
13 BUMP PLUG	22:05:12 14 CHECK FLOATS	22:08:13 15 PRESSURE UP CSG/HOLD 30 MIN	22:09:23
16 CHECK FLOATS	22:45:53 17 PUMP 10 BBLs SUGAR WTR/THRU PARASITE	22:51:33 18 SHUT DOWN	23:00:17
19 END JOB/WASH UP	23:02:32		

Customer: **OXY**
 Well Description: **CC 697-05-42**
 Company Rep: **ALEX VILLEGAS**

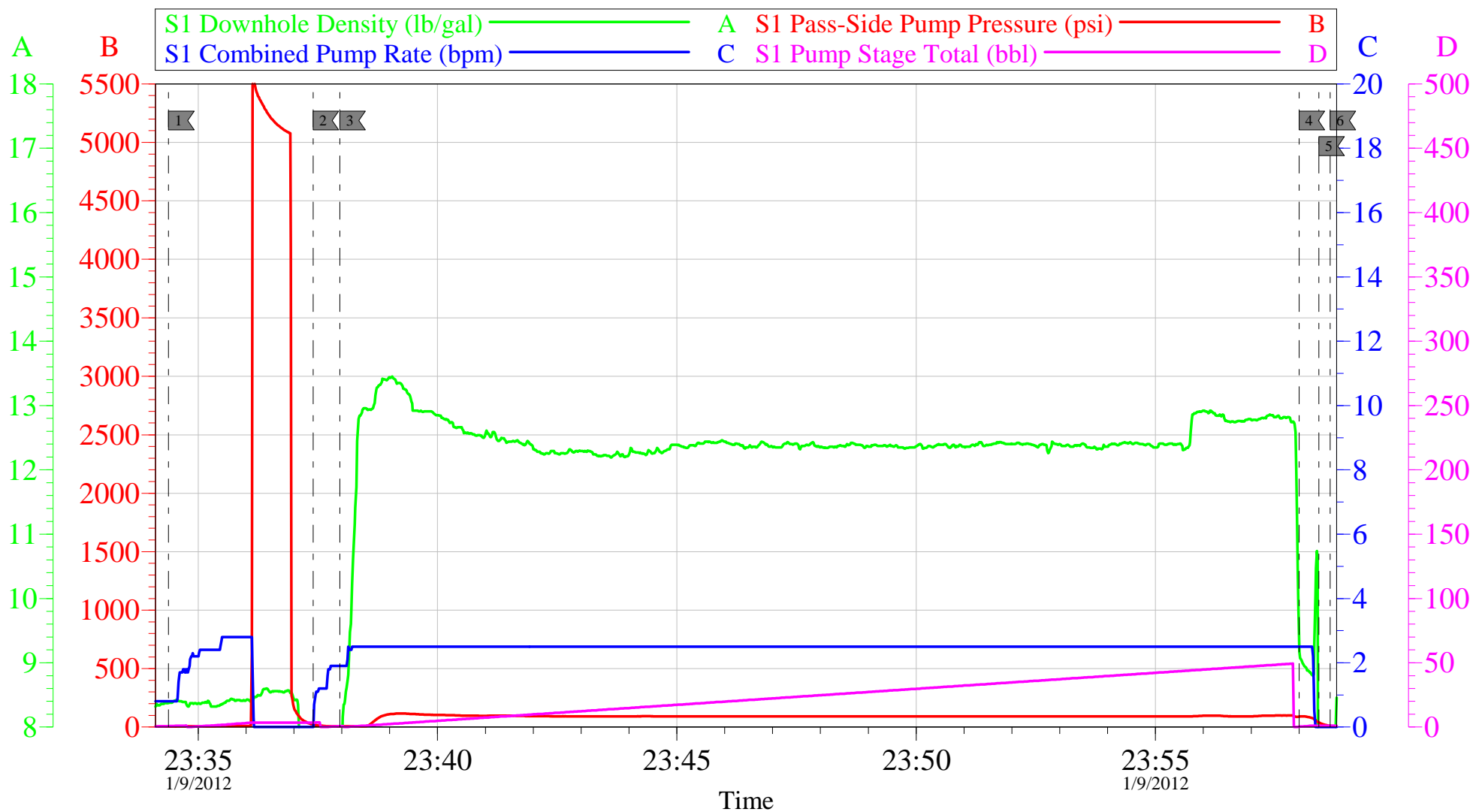
Job Date: **09-Jan-2012**
 Job Type: **SURFACE**
 Cement Supervisor: **CRAIG KUKUS**

Sales Order #: **9107157**
 ADC Used: **YES**
 Elite #/Operator: **E 8 BRENDAN BURKE**

OptiCem v6.4.8
 09-Jan-12 23:21

OXY CC 697-05-42

TOP OUT #1 HP 353



Customer: OXY
Well Description: CC 697-05-42
Company Rep: ALEX VILLEGAS

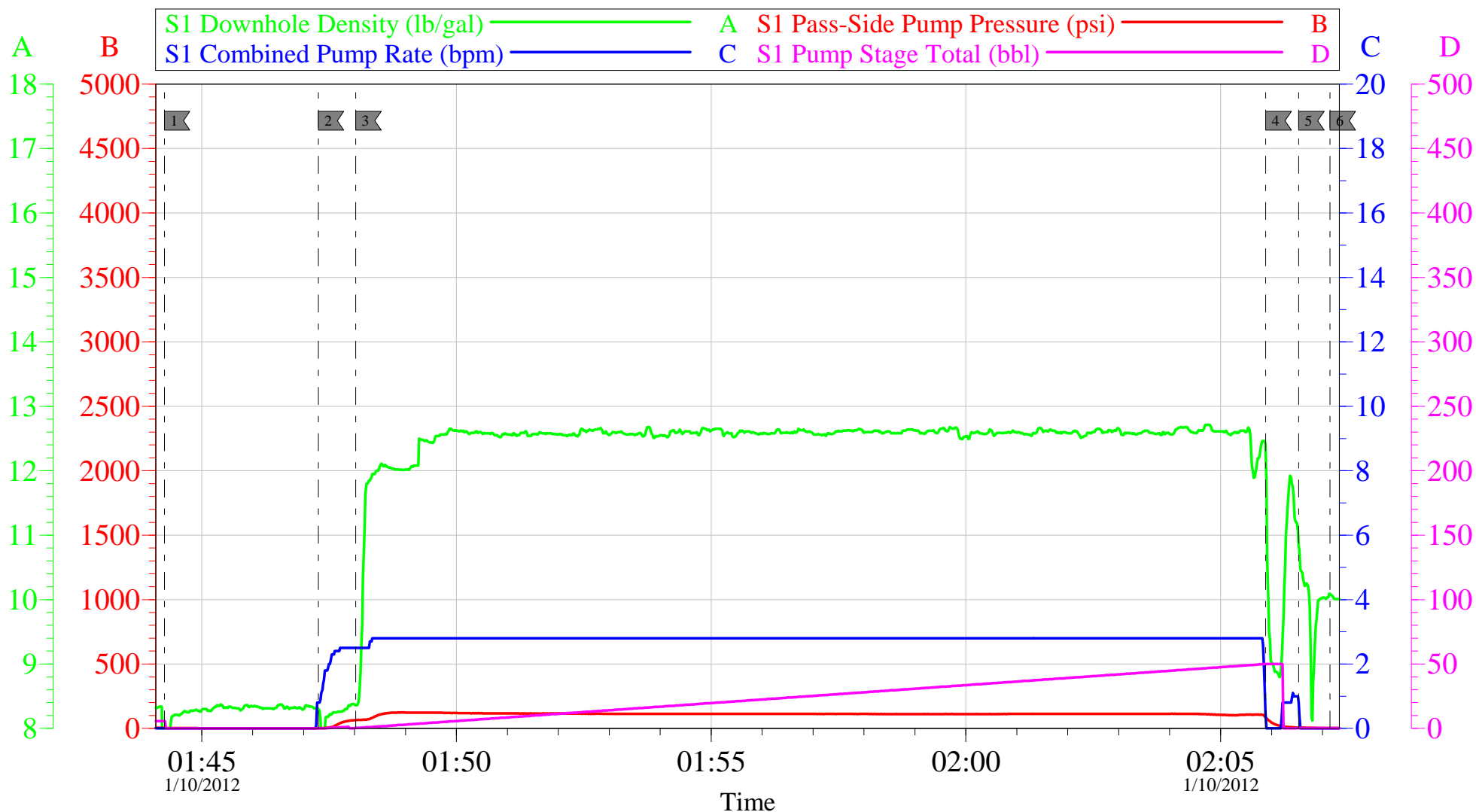
Job Date: 09-Jan-2012
Job Type: TOP OUT #1
Cement Supervisor: CRAIG KUKUS

Sales Order #: 9107157
ADC Used: YES
Elite #/Operator: E 8 BRENDAN BURKE

OptiCem v6.4.8
10-Jan-12 00:04

OXY CC 697-05-42

TOPOUT #2 HP 353



Local Event Log

1 START JOB	01:44:16	2 WATER AHEAD	01:47:17	3 PUMP TOP OUT CEMENT	01:48:01
4 PUMP WATER BEHIND	02:05:53	5 SHUT DOWN/WASH UP	02:06:32	6 END TOP OUT #2	02:07:09

Customer: OXY
Well Description: CC 697-05-42
Company Rep: ALEX VILLEGAS

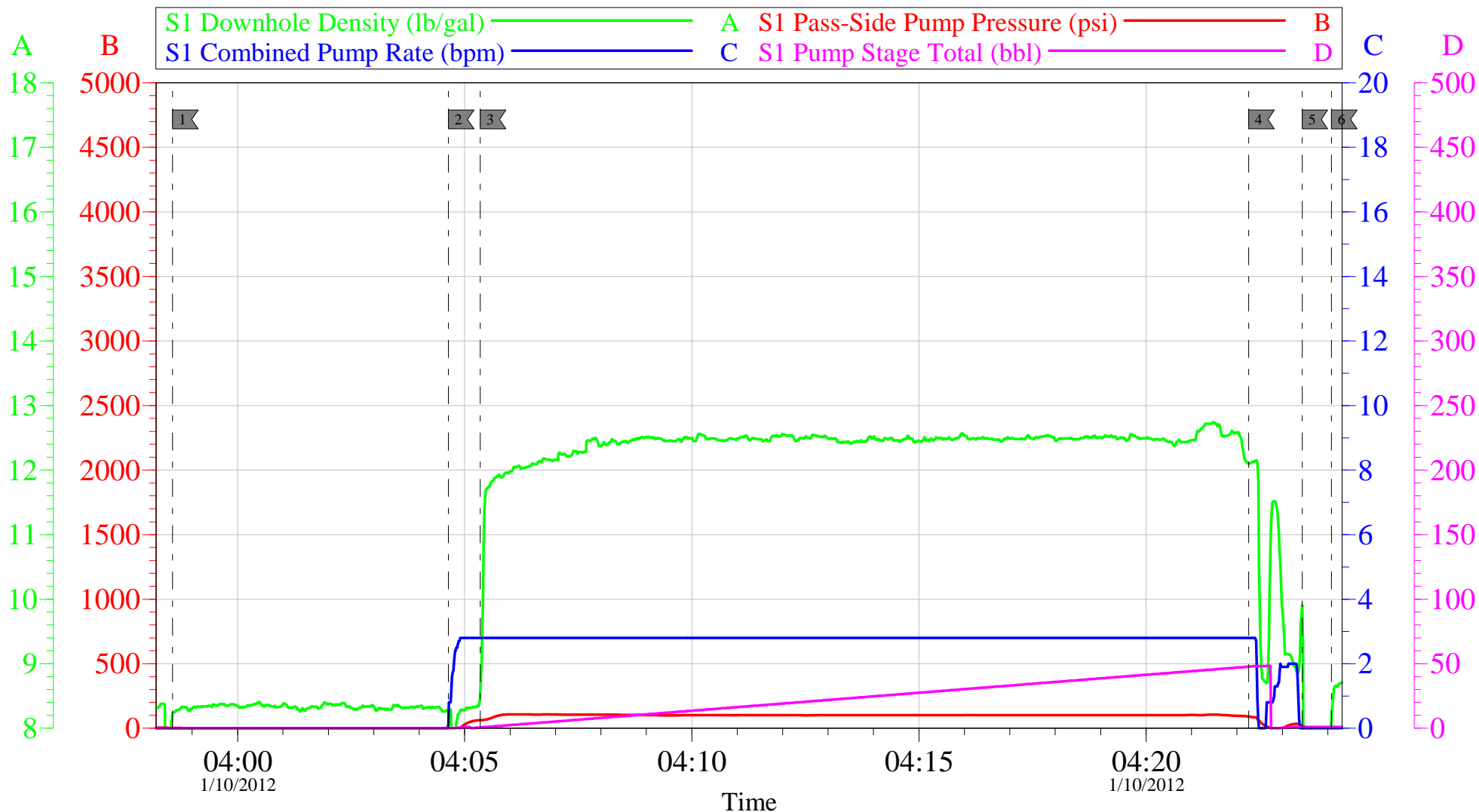
Job Date: 10-Jan-2012
Job Type: TOP OUT #2
Cement Supervisor: CRAIG KUKUS

Sales Order #: 9107157
ADC Used: YES
Elite #/Operator: E 8 BRENDAN BURKE

OptiCem v6.4.8
10-Jan-12 02:12

OXY CC 697-05-42

TOPOUT #3 HP 353



Local Event Log

1	START JOB	03:58:34	2	PUMP WATER AHEAD	04:04:38	3	PUMP TOP OUT CEMENT	04:05:21
4	PUMP WATER BEHIND	04:22:16	5	SHUT DOWN/WASH UP	04:23:26	6	END TOP OUT #3	04:24:05

Customer: OXY
Well Description: CC 697-05-42
Company Rep: ALEX VILLEGAS

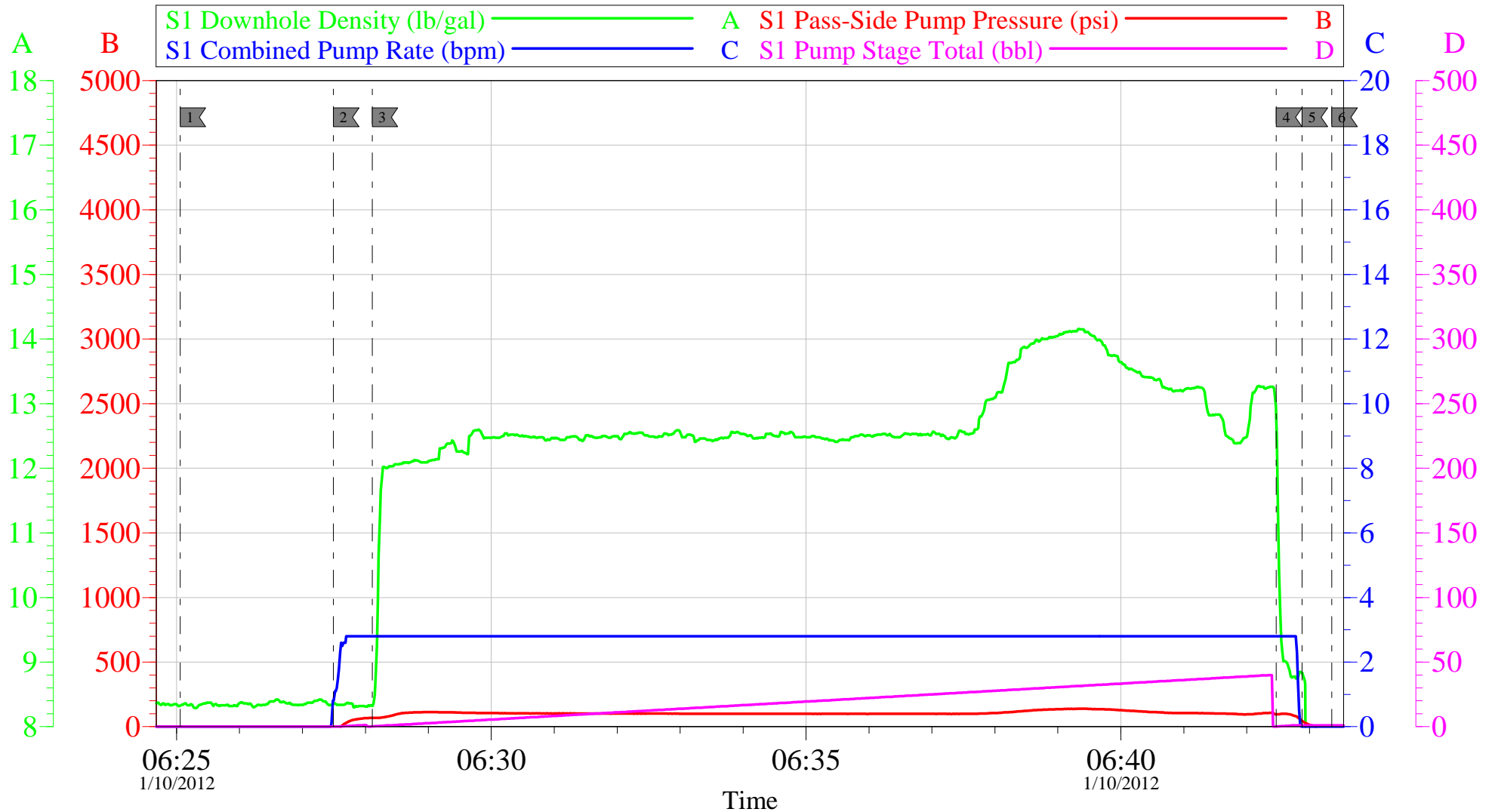
Job Date: 10-Jan-2012
Job Type: TOP OUT #3
Cement Supervisor: CRAIG KUKUS

Sales Order #: 9107157
ADC Used: YES
Elite #/Operator: E 8 BRENDAN BURKE

OptiCem v6.4.8
10-Jan-12 04:35

OXY CC 697-05-42

TOP OUT #4 HP 353



Local Event Log

1	START JOB	06:25:03	2	PUMP WATER AHEAD	06:27:29	3	PUMP TOP OUT CEMENT	06:28:06
4	PUMP WATER BEHIND	06:42:28	5	SHUT DOWN /WASH UP	06:42:53	6	END TOP OUT #4	06:43:21

Customer: **OXY**
 Well Description: **CC 697-05-42**
 Company Rep: **ALEX VILLEGAS**

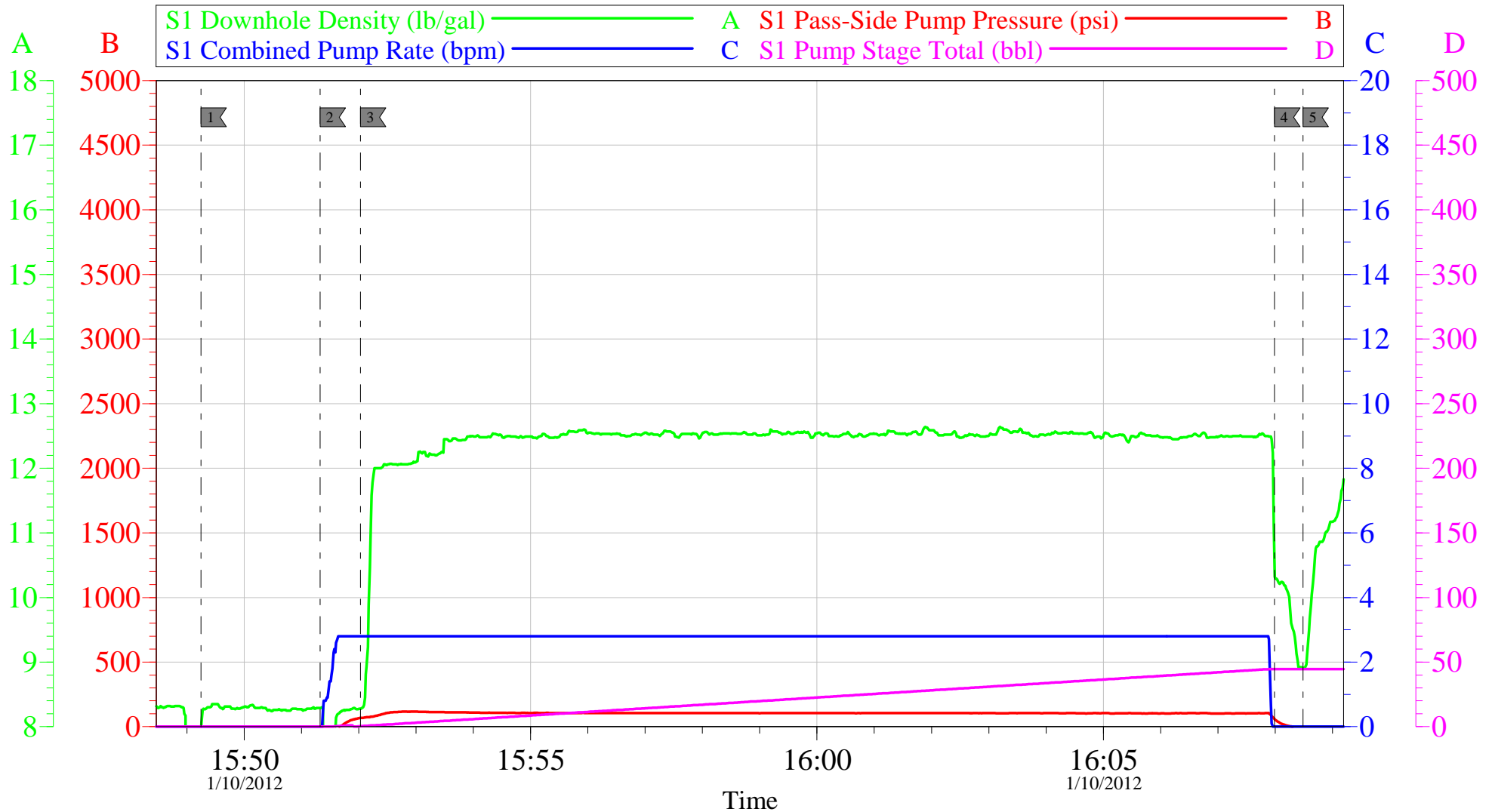
Job Date: **10-Jan-2012**
 Job Type: **TOP OUT #4**
 Cement Supervisor: **CRAIG KUKUS**

Sales Order #: **9107157**
 ADC Used: **YES**
 Elite #/Operator: **E 8 BRENDAN BURKE**

OptiCem v6.4.8
 10-Jan-12 06:49

OXY CC 697-05-42

TOP OUT #5 HP 353



Local Event Log

1 START JOB	15:49:15	2 PUMP WATER AHEAD	15:51:19	3 PUMP TOP OUT CEMENT	15:52:02
4 SHUT DOWN/WASH UP	16:07:59	5 END TOP OUT #5	16:08:29		

Customer: **OXY**
 Well Description: **CC 697-05-42**
 Company Rep: **ALEX VILLEGAS**

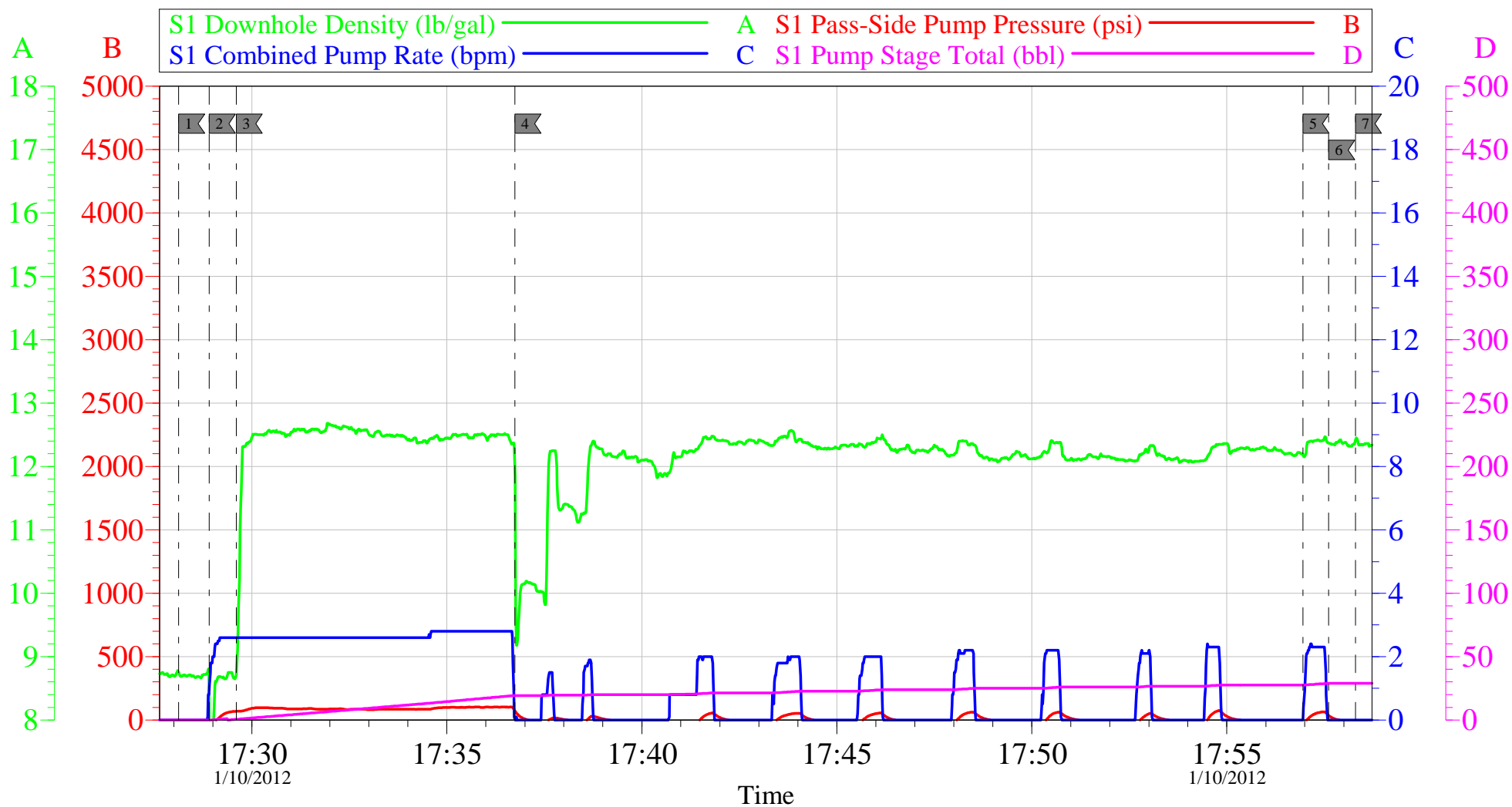
Job Date: **10-Jan-2012**
 Job Type: **TOP OUT #5**
 Cement Supervisor: **CRAIG KUKUS**

Sales Order #: **9107157**
 ADC Used: **YES**
 Elite #/Operator: **E 8 BRENDAN BURKE**

OptiCem v6.4.8
 10-Jan-12 16:26

OXY CC 697-05-42

TOP OUT #6 HP 353



Local Event Log

1 START JOB	17:28:07	2 PUMP WATER AHEAD	17:28:54	3 PUMP TOP OUT CEMENT	17:29:36
4 SHUT DOWN/HESITATE	17:36:45	5 PUMP TOP OUT CEMENT	17:56:57	6 SHUT DOWN / CEMENT TO SURFACE	17:57:37
7 END JOB /TOP #6	17:58:18				

Customer: **OXY**
 Well Description: **CC 697-05-42**
 Company Rep: **ALEX VILLEGAS**

Job Date: **10-Jan-2012**
 Job Type: **TOP OUT #6**
 Cement Supervisor: **CRAIG KUKUS**

Sales Order #: **9107157**
 ADC Used: **YES**
 Elite #/Operator: **E 8 BRENDAN BURKE**

OptiCem v6.4.8
 10-Jan-12 18:12

HALLIBURTON

Water Analysis Report

Company: OXY

Submitted by: CRAIGKUKUS

Attention:

Lease CC

Well # 697-05-42

Date: 1/9/2012

Date Rec.: 1/9/2012

S.O.# 9107157

Job Type: SURFACE

Specific Gravity	<i>MAX</i>	
pH	<i>8</i>	<i>7.5</i>
Potassium (K)	<i>5000</i>	<i>200</i> Mg / L
Calcium (Ca)	<i>500</i>	<i>0</i> Mg / L
Iron (FE2)	<i>300</i>	<i>0</i> Mg / L
Chlorides (Cl)	<i>3000</i>	<i>500</i> Mg / L
Sulfates (SO ₄)	<i>1500</i>	<i>below200</i> Mg / L
HARDNESS		<i>250</i> Mg / L
Temp	<i>40-80</i>	<i>50</i> Deg
Total Dissolved Solids		<i>1360</i> Mg / L

Respectfully: CRAIGKUKUS

Title: CEMENTING SUPERVISOR

Location: GRANDJUNCTION CO

NOTICE:

This report is limited to the described sample tested. Any person using or relying on this report agrees that Halliburton shall not be liable for any loss or damage whether due to act or omission resulting from such report or

Sales Order #: 9107157	Line Item: 10	Survey Conducted Date: 1/10/2012
Customer: OXY GRAND JUNCTION EBUSINESS		Job Type (BOM): CMT SURFACE CASING BOM
Customer Representative: ALEX VILLEGAS		API / UWI: (leave blank if unknown) 05-045-20373
Well Name: CC		Well Number: 697-05-42
Well Type: Development Well	Well Country: United States of America	
H2S Present:	Well State: Colorado	Well County: Garfield

Dear Customer,

We hope that you were satisfied with the service quality of this job performed by Halliburton. It is the aim of our management and service personnel to deliver equipment and service of a standard unmatched in the service sector of the energy industry.

Please take the time to let us know if our performance met with your satisfaction. Please be as critical as possible to ensure we constantly improve our service. Your comments are of great value to us and are intended for the exclusive use of Halliburton.

CUSTOMER SATISFACTION SURVEY

CATEGORY	CUSTOMER SATISFACTION RESPONSE	
Survey Conducted Date	The date the survey was conducted	1/10/2012
Survey Interviewer	The survey interviewer is the person who initiated the survey.	CRAIG KUKUS (HX19742)
Customer Participation	Did the customer participate in this survey? (Y/N)	Yes
Customer Representative	Enter the Customer representative name	ALEX VILLEGAS
HSE	Was our HSE performance satisfactory? Circle Y or N	Yes
Equipment	Were you satisfied with our Equipment? Circle Y or N	Yes
Personnel	Were you satisfied with our people? Circle Y or N	Yes
Customer Comment	Customer's Comment	

CUSTOMER SIGNATURE

Sales Order #: 9107157	Line Item: 10	Survey Conducted Date: 1/10/2012
Customer: OXY GRAND JUNCTION EBUSINESS		Job Type (BOM): CMT SURFACE CASING BOM
Customer Representative: ALEX VILLEGAS		API / UWI: (leave blank if unknown) 05-045-20373
Well Name: CC		Well Number: 697-05-42
Well Type: Development Well	Well Country: United States of America	
H2S Present:	Well State: Colorado	Well County: Garfield

KEY PERFORMANCE INDICATORS

General	
Survey Conducted Date The date the survey was conducted	1/10/2012

Cementing KPI Survey	
Type of Job Select the type of job. (Cementing or Non-Cementing)	0
Select the Maximum Deviation range for this Job What is the highest deviation for the job you just completed? This may not be the maximum well deviation.	Vertical
Total Operating Time (hours) Total Operating Hours Including Rig-up, Pumping, Rig-down. Enter in decimal format.	10
HSE Incident, Accident, Injury HSE Incident, Accident, Injury. This should be recordable incidents only.	No
Was the job purpose achieved? Was the job delivered correctly as per customer agreed design?	Yes
Operating Hours (Pumping Hours) Total number of hours pumping fluid on this job. Enter in decimal format.	5
Customer Non-Productive Rig Time (hrs) Lost time due to Halliburton in the start, execution, or completion of an ordered service or product, or delays in a follow-on service. Enter in decimal format. 0 if none.	0
Type of Rig Classification Job Was Performed Type Of Rig (classification) Job Was Performed On	Drilling Rig (Portable)
Number Of JSAs Performed Number Of Jsas Performed	6
Number of Unplanned Shutdowns Unplanned shutdown is when injection stops for any period of time.	0
Was this a Primary Cement Job (Yes / No)	Yes

Sales Order #: 9107157	Line Item: 10	Survey Conducted Date: 1/10/2012
Customer: OXY GRAND JUNCTION EBUSINESS		Job Type (BOM): CMT SURFACE CASING BOM
Customer Representative: ALEX VILLEGAS		API / UWI: (leave blank if unknown) 05-045-20373
Well Name: CC		Well Number: 697-05-42
Well Type: Development Well	Well Country: United States of America	
H2S Present:	Well State: Colorado	Well County: Garfield

Primary Cement Job= Casing job, Liner job, or Tie-back job.	
Did We Run Wiper Plugs? Did We Run Top And Bottom Casing Wiper Plugs?	Top
Mixing Density of Job Stayed in Designed Density Range (0-100%) Density Range defined as +/- .20 ppg. Calculation: Total BBLs cement mixed at designed density divided by total BBLs of cement multiplied by 100	98
Was Automated Density Control Used? Was Automated Density Control (ADC) Used ?	Yes
Pump Rate (percent) of Job Stayed At Designed Pump Rate Pump Rate range defined as +/- 1bbl/min. Calculation: Total BBLs of fluid pumped at the designed rate divided by Total BBLs of fluid pumped, multiplied by 100	98
Nbr of Remedial Sqz Jobs Rqd - Competition Number Of Remedial Squeeze Jobs Required After Primary Job Performed By Competition	0
Nbr of Remedial Plug Jobs Rqd - HES Number Of Remedial Plug Jobs Needed After Primary Plug Pumped By HES	0
Nbr of Remedial Sqz Jobs Rqd - HES Number Of Remedial Squeeze Jobs Required After Primary Job Performed By HES	0