

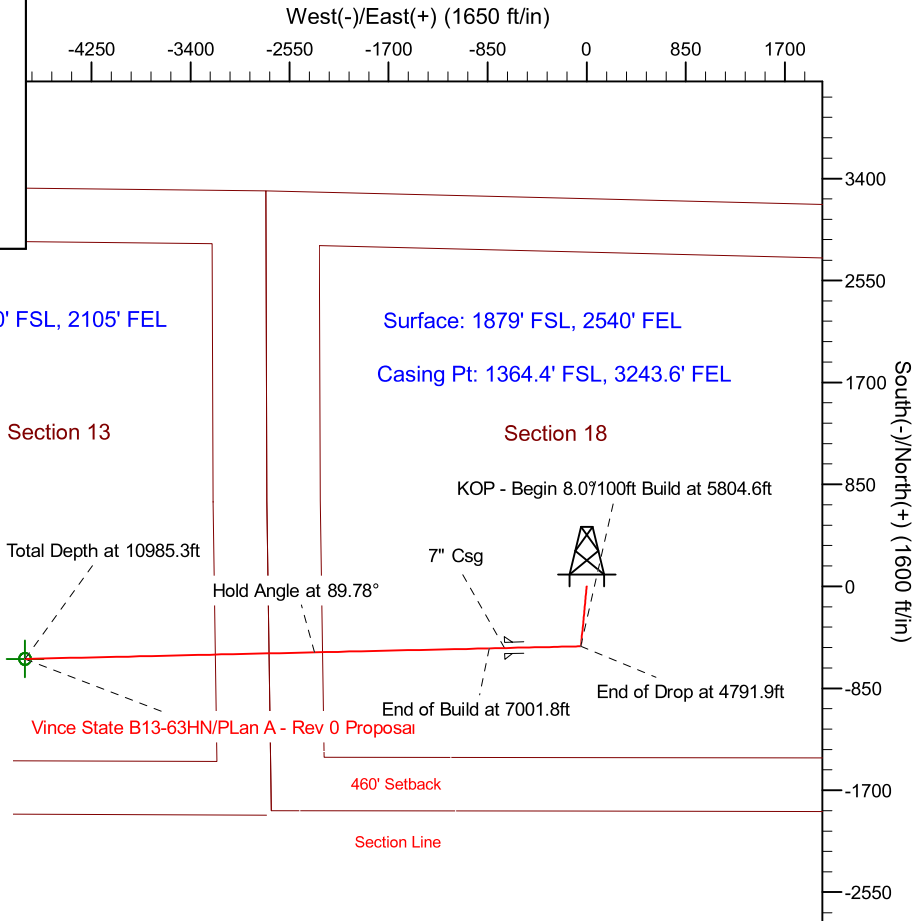
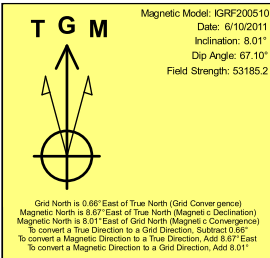
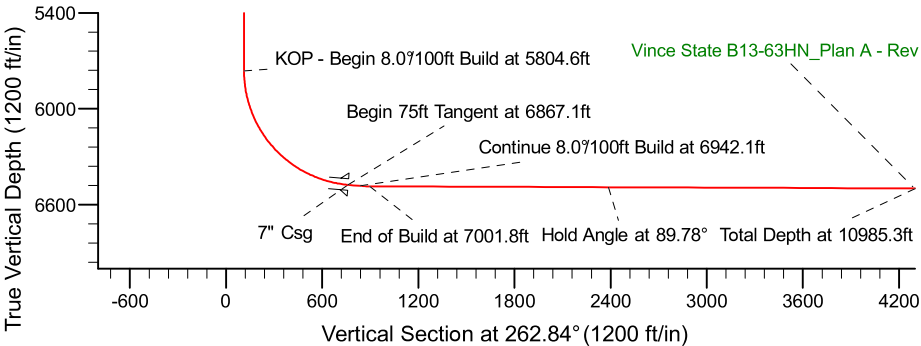
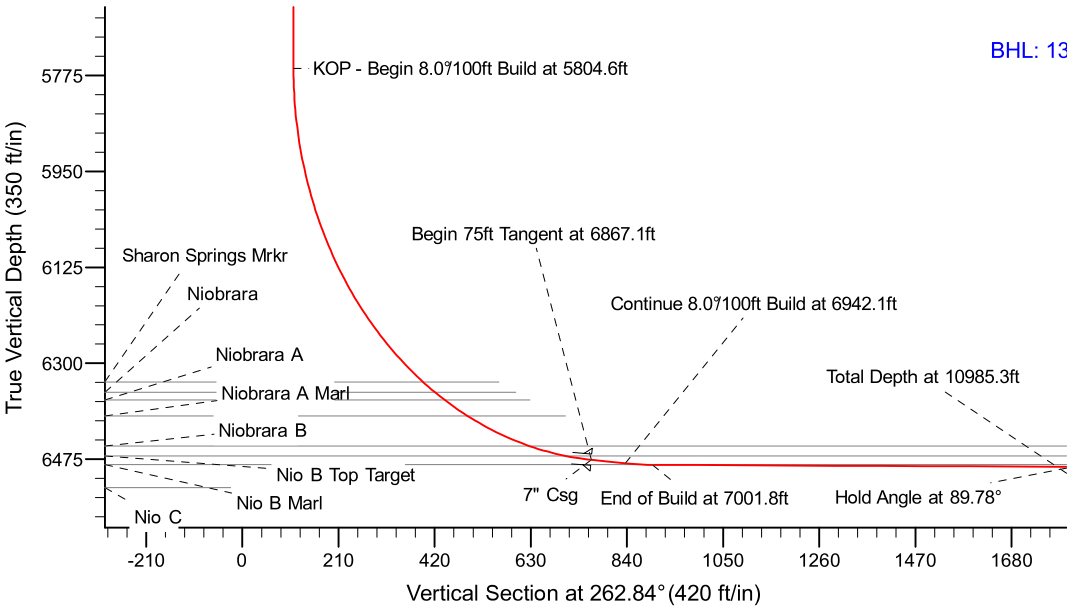
Project: Weld County Colorado (NAD 83)
Site: Sec. 18, T5N, R63W
Well: Vince State B13-63HN
Wellbore: Plan A - Rev 0 (PERMITTING PLAN ONLY)
Design: Plan A - Rev 0 Proposal

Noble Energy



SECTION DETAILS

Sec	MD	Inc	Azi	TVD	+N/-S	+E/-W	Dleg	TFace	VSec	Target
1	0.0	0.00	0.00	0.0	0.0	0.0	0.00	0.00	0.0	
2	1500.0	0.00	0.00	1500.0	0.0	0.0	0.00	0.00	0.0	
3	1900.1	10.00	185.71	1898.1	-34.7	-3.5	2.50	185.71	7.8	
4	4391.8	10.00	185.71	4351.9	-465.3	-46.5	0.00	0.00	104.1	
5	4791.9	0.00	0.00	4750.0	-500.0	-50.0	2.50	180.00	111.9	
6	5804.6	0.00	0.00	5762.7	-500.0	-50.0	0.00	0.00	111.9	
7	6867.1	85.00	268.74	6476.1	-514.4	-703.6	8.00	268.74	762.2	
8	6942.1	85.00	268.74	6482.7	-516.0	-778.3	0.00	0.00	836.5	
9	7001.9	89.78	268.74	6485.4	-517.3	-838.0	8.00	0.00	895.9	
10	10985.3	89.78	268.73	6500.6	-605.2	-4820.5	0.00	-81.31	4858.3	Vince State B13-63HN_Plan A - Rev 0_BHL Tgt-



WELL DETAILS: Vince State B13-63HN(NAD83 Geodetic System)			
Ground Level:		4586.0	
Northing	Easting	Latitude	Longitude
423413.00	1001054.34	40° 23' 49.632 N	104° 28' 45.336 W
Plan: Plan A - Rev 0 Proposal (Vince State B13-63HN/Plan A - Rev 0 (PERMITTING PLAN ONLY))			
Created By: Erasmo Mendoza		Date: 13:07, June 13 2011	