
CHEVRON - MID-CONTINENT EBIZ

**SKR 698-09-AV-13
SKINNER RIDGE
Garfield County , Colorado**

Cement Surface Casing
25-Mar-2009

Job Site Documents

The Road to Excellence Starts with Safety

Sold To #: 338668		Ship To #: 2713356		Quote #:		Sales Order #: 6576888	
Customer: CHEVRON - MID-CONTINENT EBIZ				Customer Rep:			
Well Name: SKR		Well #: 698-09-AV-13		API/UWI #: 05-045-17290			
Field: SKINNER RIDGE		City (SAP): PARACHUTE		County/Parish: Garfield		State: Colorado	
Lat: N 39.551 deg. OR N 39 deg. 33 min. 3.841 secs.				Long: W 108.33 deg. OR W -109 deg. 40 min. 12.666 secs.			
Contractor: H&P 318		Rig/Platform Name/Num: H&P 318					
Job Purpose: Cement Surface Casing							
Well Type: Development Well				Job Type: Cement Surface Casing			
Sales Person: DUNNING, DUSTIN				Srv Supervisor: NELSON, RYAN		MBU ID Emp #: 386514	
Job Personnel							
HES Emp Name	Exp Hrs	Emp #	HES Emp Name	Exp Hrs	Emp #	HES Emp Name	Exp Hrs
BETZ, KLAYTON Alan	7.5	446140	BLANCHETTE, JAMES George	7.5	371360	DUBON, TODD N	7.5
NELSON, RYAN Cody	7.5	386514	OLDS, RYAN John	7.5	418018	WILKINSON, JAMES V	7.5
Equipment							
HES Unit #	Distance-1 way	HES Unit #	Distance-1 way	HES Unit #	Distance-1 way	HES Unit #	Distance-1 way
10240238C	120 mile	10565341	120 mile	10567589C	120 mile	10719774	120 mile
10995027	120 mile						
Job Hours							
Date	On Location Hours	Operating Hours	Date	On Location Hours	Operating Hours	Date	On Location Hours
3-25-09	7.5	2.5					
TOTAL		Total is the sum of each column separately					
Job				Job Times			
Formation Name				Date	Time	Time Zone	
Formation Depth (MD)	Top	Bottom		Called Out	25 - Mar - 2009	13:00	MST
Form Type	BHST			On Location	25 - Mar - 2009	16:00	MST
Job depth MD	1035. ft	Job Depth TVD	1035. ft	Job Started	25 - Mar - 2009	21:05	MST
Water Depth		Wk Ht Above Floor	4. ft	Job Completed	25 - Mar - 2009	22:00	MST
Perforation Depth (MD)	From	To		Departed Loc	25 - Mar - 2009	23:30	MST
Well Data							
Description	New / Used	Max pressure psig	Size in	ID in	Weight lbm/ft	Thread	Grade
Open Hole				12.25			
Surface Casing	New		8.625	8.097	24.		J-55
							0. 1035. 1022.
Sales/Rental/3 rd Party (HES)							
Description	Qty	Qty uom	Depth	Supplier			
PLUG, CMTG, TOP, 8 5/8, HWE, 7.20 MIN/8.09 MA	1	EA					
PORT. DAS W/CEMWIN; ACQUIRE W/HES, ZI	1	JOB					
ADC (AUTO DENSITY CTRL) SYS, /JOB, ZI	1	JOB					
Tools and Accessories							
Type	Size	Qty	Make	Depth	Type	Size	Qty
Guide Shoe					Packer		
Float Shoe					Bridge Plug		
Float Collar					Retainer		
Insert Float							
Stage Tool							
					Top Plug	8 5/8	1
					Bottom Plug		
					SSR plug set		
					Plug Container	8 5/8	1
					Centralizers		
Miscellaneous Materials							
Gelling Agt		Conc		Surfactant		Conc	
Treatment Fld		Conc		Inhibitor		Conc	
					Acid Type		
					Sand Type		
					Qty	Size	Conc %
							Qty

Fluid Data									
Stage/Plug #: 1									
Fluid #	Stage Type	Fluid Name	Qty	Qty uom	Mixing Density lbm/gal	Yield ft ³ /sk	Mix Fluid Gal/sk	Rate bbl/min	Total Mix Fluid Gal/sk
1	PolyFlake Dyed Spacer		50	bbl	8.33	.0	.0	.0	
2	Lead Cement	VERSACEM (TM) SYSTEM (452010)	140	sacks	12.3	2.38	13.75		
3	Tail Cement	VERSACEM (TM) SYSTEM (452010)	155	sacks	12.8	2.11	11.75		
4	Fresh Water Displacement		62.1	bbl	8.33	.0	.0	.0	
Calculated Values		Pressures		Volumes					
Displacement	62.1	Shut In: Instant		Lost Returns	No	Cement Slurry	117.5	Pad	
Top Of Cement	0	5 Min		Cement Returns	22 bbl	Actual Displacement	62.1	Treatment	
Frac Gradient		15 Min		Spacers		Load and Breakdown		Total Job	
Rates									
Circulating		Mixing	8	Displacement	8	Avg. Job	8		
Cement Left In Pipe	Amount	45.2 ft	Reason	Shoe Joint					
Frac Ring # 1 @	ID	Frac ring # 2 @	ID	Frac Ring # 3 @	ID	Frac Ring # 4 @	ID		
The Information Stated Herein Is Correct				Customer Representative Signature					

The Road to Excellence Starts with Safety

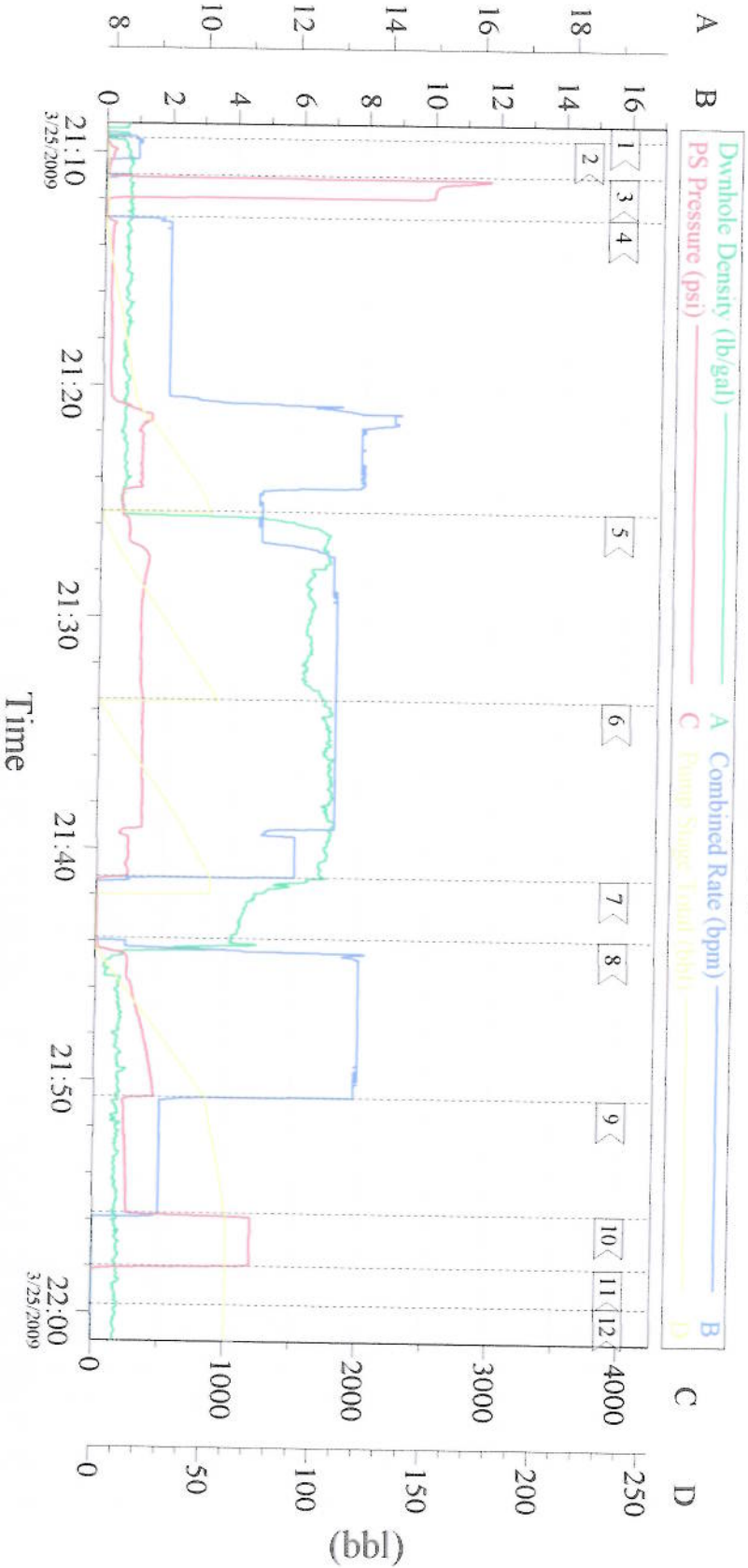
Sold To #: 338668	Ship To #: 2713356	Quote #:	Sales Order #: 6576888
Customer: CHEVRON - MID-CONTINENT EBIZ		Customer Rep:	
Well Name: SKR	Well #: 698-09-AV-13	API/UWI #: 05-045-17290	
Field: SKINNER RIDGE	City (SAP): PARACHUTE	County/Parish: Garfield	State: Colorado
Legal Description:			
Lat: N 39.551 deg. OR N 39 deg. 33 min. 3.841 secs.		Long: W 108.33 deg. OR W -109 deg. 40 min. 12.666 secs.	
Contractor: H&P 318	Rig/Platform Name/Num: H&P 318		
Job Purpose: Cement Surface Casing		Ticket Amount:	
Well Type: Development Well		Job Type: Cement Surface Casing	
Sales Person: DUNNING, DUSTIN	Srv Supervisor: NELSON, RYAN	MBU ID Emp #: 386514	

Activity Description	Date/Time	Cht #	Rate bbl/min	Volume bbl		Pressure psig		Comments
				Stage	Total	Tubing	Casing	
Call Out	03/25/2009 13:00							
Arrive At Loc	03/25/2009 14:00							Rig rigging up to run casing.
Assessment Of Location Safety Meeting	03/25/2009 14:05							Ryan Olds is safety person for this job
Pre-Rig Up Safety Meeting	03/25/2009 14:10							All HES personal
Rig-Up Equipment	03/25/2009 14:15							
Pre-Job Safety Meeting	03/25/2009 20:40							All personal on location
Start Job	03/25/2009 21:05							TD- 1035' TP-1022' SJ- 45.2' CASING 8 5/8" 24# J-55 HOLE 12 1/4" MUD 9.1 BP-10
Other	03/25/2009 21:10			1				Fill lines
Test Lines	03/25/2009 21:12						3000.0	
Pump Spacer 1	03/25/2009 21:13		8	50			378.0	Fresh water with Poly-Flake and Red Dye
Pump Lead Cement	03/25/2009 21:26		8	59.3			370.0	140 Sks 12.3 ppg 2.38 yield 13.75 gal/sk BP-14
Pump Tail Cement	03/25/2009 21:34		8	58.2			335.0	155 Sks 12.8 ppg 2.11 yield 11.75 gal/sk BP-14
Shutdown	03/25/2009 21:41							
Drop Top Plug	03/25/2009 21:42							
Pump Displacement	03/25/2009 21:44		8	62.1			420.0	Fresh Water
Cement Returns to Surface	03/25/2009 21:50							Well circulated 22 bbls of cement to surface
Slow Rate	03/25/2009 21:51		2	50			260.0	

Cementing Job Log

Activity Description	Date/Time	Cht #	Rate bbl/min	Volume bbl		Pressure psig		Comments
				Stage	Total	Tubing	Casing	
Bump Plug	03/25/2009 21:56		2	62.1			1202.0	
Check Floats	03/25/2009 21:58							Floats held
End Job	03/25/2009 22:00							Well was circulated prior to the job. Good returns throughout the job. Pipe was static throughout the job. Thank you for using Halliburton-Ryan Nelson & Crew

8 5/8" Surface



Event Log

1 Start Job	21:08:48	2 Fill Lines	21:09:24	3 Pressure Test	21:10:59
4 Pump Spacer	21:12:46	5 Pump Lead Cement	21:25:25	6 Pump Tail Cement	21:33:32
7 Shut Down/Drop Plug	21:41:13	8 Pump Displacement	21:43:51	9 Slow Rate	21:50:42
10 Bump Plug	21:55:42	11 Check Floats	21:57:58	12 End Job	21:59:39

Customer: Chevron
Well Number: 698-09-av-13
Supervisor: Ryan Nelson

Job Date: 3-25-09
Job Type: Surface
Operator/Truck: Todd Dubon/Elite 3

Ticket #: 6576888
ADC Used: Yes

CentWin v1.7.2
25-Mar-09 22:12