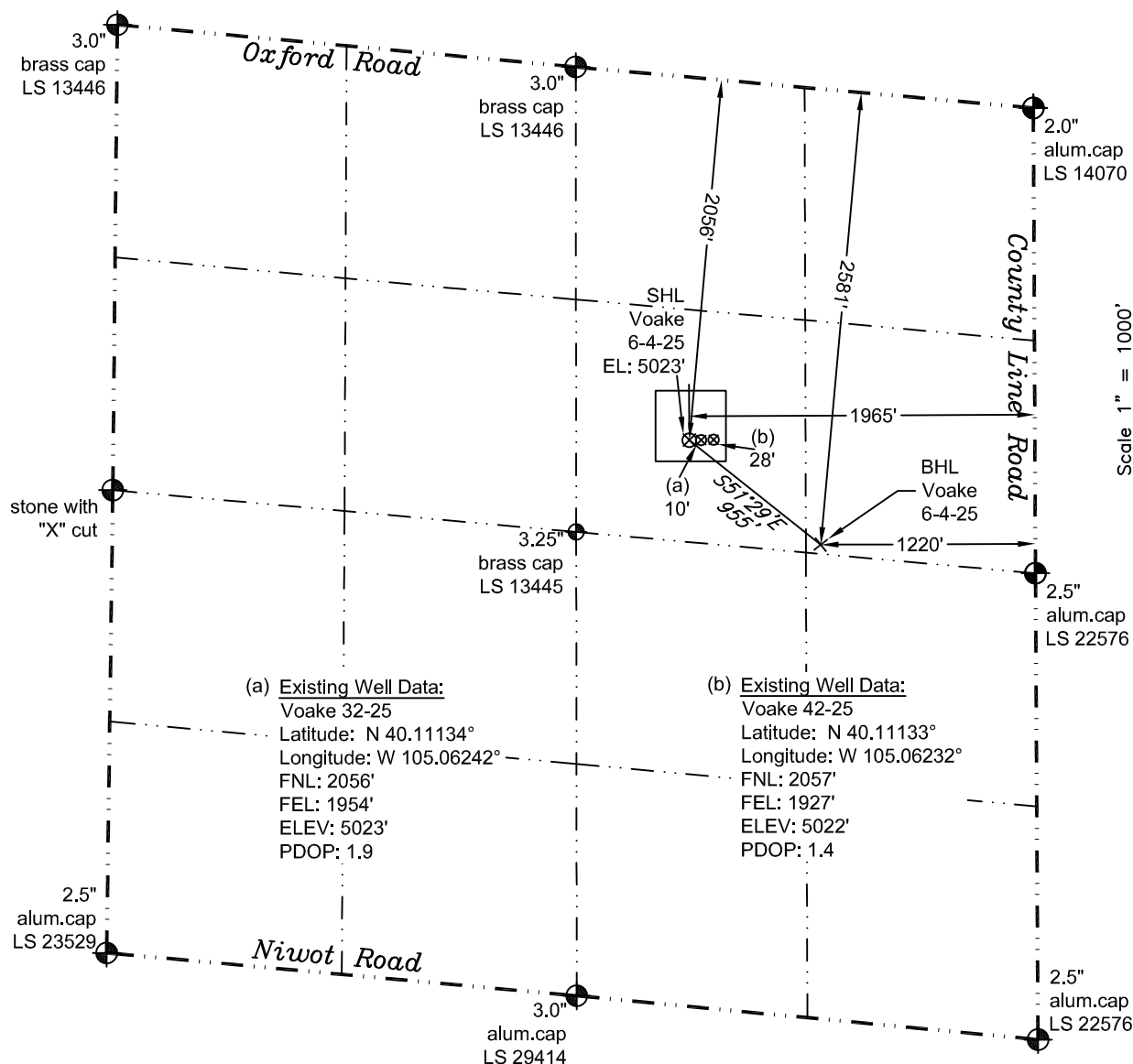


PLS Group, LLC
109 Coronado Ct. - Bldg. 7
Fort Collins, Colorado 80525
P. 970-282-3446 Fx. 970-377-6767

WELL LOCATION CERTIFICATE

THIS MAP DOES NOT REPRESENT A BOUNDARY SURVEY



Scale 1" = 1000'
approximate scale

LEGEND
— found survey monument
— calculated dimension
(c)

In accordance with a request from Jay Knutson of EnCana Oil & Gas (USA) Inc., PLS Group, LLC has determined the location of the **Voake 6-4-25** well site to be SHL: 2056' FNL and 1965' FEL, (BHL 2581' FNL and 1220' FEL), as measured at ninety (90) degrees from the section lines of Section 25, Township 2 North, Range 69 West of the 6th Principal Meridian, Boulder County Colorado.

Proposed Surface Hole Data:

Latitude: N 40.11135° (BHL: N 40.10970°)
Longitude: W 105.06245° (BHL: W 105.05979°)
PDOP: 1.0

Nearest:

Building 909' southwest	Above Ground Utility 1,934' east
Public Road 1,950' east	Railroad 16,500 northwest
Property Line 577' south	Well Window: SHL is 120' inside
Existing Well: Voake 32-25 10' east	

Notes:

- 1) Bearings and distances based on NAD 83 Colorado North State Plane Coordinates using RTK GPS observations taken 8/12/11 by operator Tom Winans.
- 2) Conversion factor to ground (1.000276491).
- 3) Elevations based on NAVD 88 GPS heights and Geoid 2003 corrections.
- 4) See Location Drawing for visible improvements within 400 feet of Pad Site.
- 5) The surface use is cultivated field.

NOTICE: According to Colorado law you must commence any legal action based upon any defect in this W.L.C. within three years after you first discover such defect. In no event may any action based upon any defect in this W.L.C. be commenced more than ten years from this said date of the certification shown hereon.

I hereby certify that this Well Location Certificate was prepared by me or under my direct supervision on 11/02/2011 for and on behalf of EnCana Oil & Gas (USA) Inc. That it is not a Land Survey Plat or an Improvement Survey Plat and that it is not to be relied upon for establishment of fences, buildings, or other future improvement lines.

John Robert McGehee LS#38219
Well: Voake 6-4-25 WLC