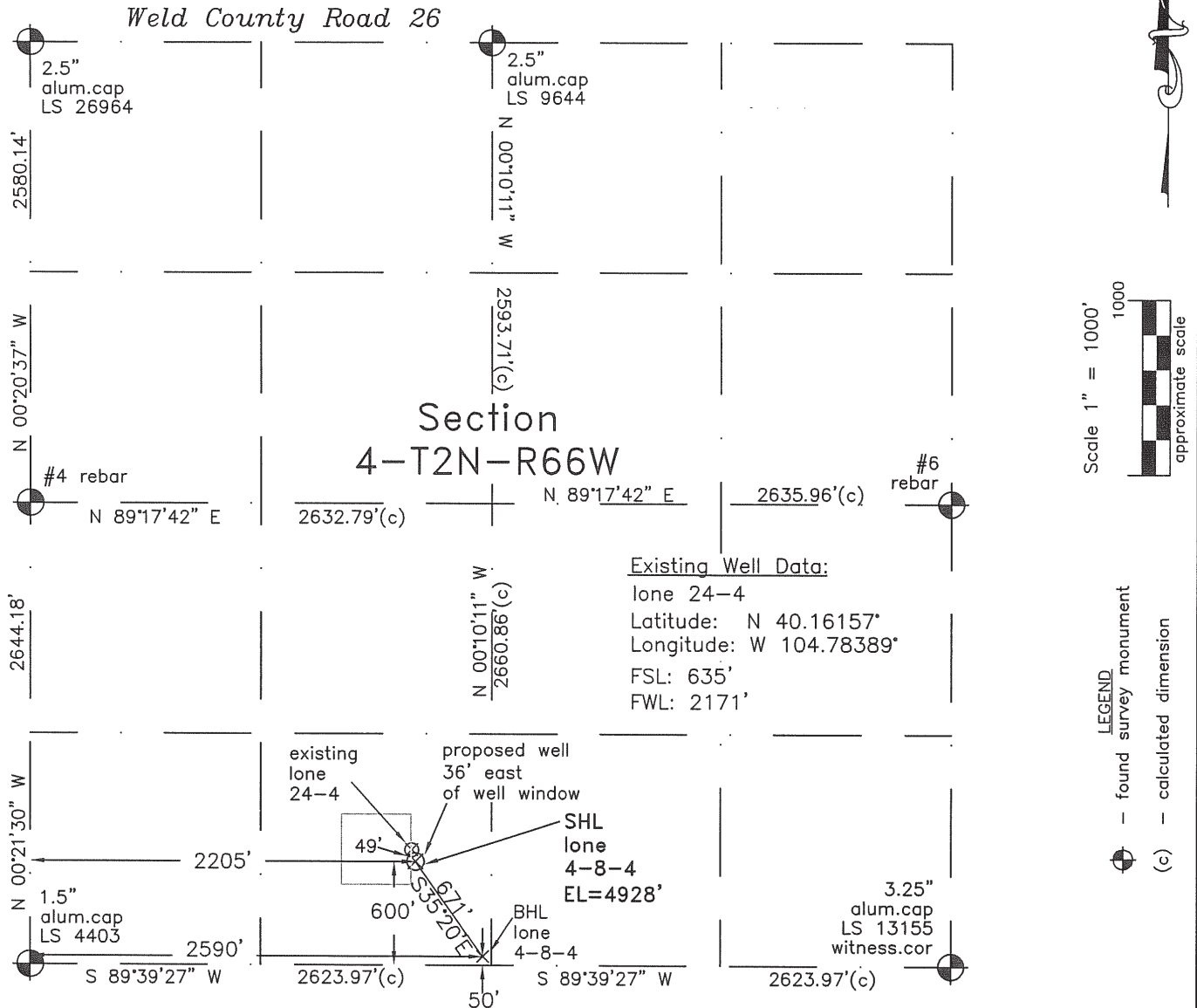


# WELL LOCATION CERTIFICATE

THIS MAP DOES NOT REPRESENT A BOUNDARY SURVEY



In accordance with a request from Dave Bale of EnCana Oil & Gas (USA) Inc., Frederick Land Surveying, Inc. has determined the location of the **lone 4-8-4** well site to be SHL: 600' FSL and 2205' FWL, BHL (50' FSL and 2590' FWL) as measured at ninety (90) degrees from the section lines of Section 4, Township 2 North, Range 66 West, 6th Principal Meridian, Weld County, CO.

## Proposed Surface Hole Data:

Latitude: N 40.16148° BHL(40.15997°)

Longitude: W 104.78377° BHL(104.78240°)

Nearest: Building 412' northeast Above Ground Utility 250' northeast

Public Road 2219' southeast Railroad 8200' west

Property Line 600' south

PDOP: 1.9

## Notes:

- 1) Bearings and distances based on NAD 83 Colorado North State Plane Coordinates using RTK GPS observations taken 2/4/10 by operator Craig Burke.
- 2) Conversion factor to ground (1.000275398).
- 3) Elevations based on NAVD 88 GPS heights and Geoid 2003 corrections.
- 4) See improvement map for visible improvements within 400 feet.
- 5) The location falls on agricultural land.

**NOTICE:** According to Colorado law you must commence any legal action based upon any defect in this W.L.C. within three years after you first discover such defect. In no event may any action based upon any defect in this W.L.C. be commenced more than ten years from this said date of the certification shown hereon.

I hereby certify that this Well Location Certificate was prepared by me or under my direct supervision on 2/15/10 for and on behalf of EnCana Oil & Gas (USA) Inc. that it is a Land Survey Plot and that it is not to be relied upon for establishment of fences, buildings, or other future improvement lines.

Alex Rondell Perkins LS#34176

Job #: 09034.059 2-15-2010