

**CHEVRON - MID-CONTINENT EBIZ
11111 S WILCREST DR - DO NOT MAIL
HOUSTON, Texas**

SKR
SKR 698-09-AV-06

H&P 318/H&P/318

Post Job Summary

Cement Surface Casing

Prepared for:
Date Prepared:
Version: 1

Service Supervisor: MAIN, CHAD

Submitted by:

HALLIBURTON

The Road to Excellence Starts with Safety

Sold To #: 338668		Ship To #: 2713344		Quote #:		Sales Order #: 6668605	
Customer: CHEVRON - MID-CONTINENT EBIZ				Customer Rep: Doherty, Ed			
Well Name: SKR		Well #: 698-09-AV-06		API/UWI #: 05-045-17301			
Field: SKINNER RIDGE		City (SAP): PARACHUTE		County/Parish: Garfield		State: Colorado	
Lat: N 39.551 deg. OR N 39 deg. 33 min. 3.528 secs.				Long: W 108.33 deg. OR W -109 deg. 40 min. 12.688 secs.			
Contractor: H&P 318		Rig/Platform Name/Num: H&P 318					
Job Purpose: Cement Surface Casing							
Well Type: Development Well				Job Type: Cement Surface Casing			
Sales Person: HARTLEY, RICHARD		Srvc Supervisor: MAIN, CHAD		MBU ID Emp #: 335770			
Job Personnel							
HES Emp Name	Exp Hrs	Emp #	HES Emp Name	Exp Hrs	Emp #	HES Emp Name	Exp Hrs
BLANCHETTE, JAMES George	5.5	371360	GAMBLE, BENJAMIN T	5.5	446666	GREGORY, JON D	5.5
MAIN, CHAD R	5.5	335770					
Equipment							
HES Unit #	Distance-1 way	HES Unit #	Distance-1 way	HES Unit #	Distance-1 way	HES Unit #	Distance-1 way
10822535	60 mile	10871245	60 mile	10893932	60 mile	10951244	60 mile
Job Hours							
Date	On Location Hours	Operating Hours	Date	On Location Hours	Operating Hours	Date	On Location Hours
05/17/09	5.5	5.5					
TOTAL		<i>Total is the sum of each column separately</i>					
Job				Job Times			
Formation Name				Date			
Formation Depth (MD) Top Bottom				Time			
Form Type				Time Zone			
Job depth MD 1030. ft				Called Out 17 - May - 2009 11:00 MST			
Water Depth				On Location 17 - May - 2009 14:30 MST			
Perforation Depth (MD) From To				Job Started 17 - May - 2009 16:59 MST			
				Job Completed 17 - May - 2009 17:46 MST			
				Departed Loc 17 - May - 2009 20:00 MST			
Well Data							
Description	New / Used	Max pressure psig	Size in	ID in	Weight lbm/ft	Thread	Grade
							Top MD ft
							Bottom MD ft
							Top TVD ft
							Bottom TVD ft
Sales/Rental/3rd Party (HES)							
Description				Qty	Qty uom	Depth	Supplier
PLUG,CMTG,TOP,8 5/8,HWE,7.20 MIN/8.09 MA				1	EA		
ADC (AUTO DENSITY CTRL) SYS, /JOB,ZI				1	JOB		
Tools and Accessories							
Type	Size	Qty	Make	Depth	Type	Size	Qty
Guide Shoe					Packer		
Float Shoe					Bridge Plug		
Float Collar					Retainer		
Insert Float							
Stage Tool							
Miscellaneous Materials							
Gelling Agt		Conc		Surfactant		Conc	
Treatment Fld		Conc		Inhibitor		Conc	
						Acid Type	Qty
						Sand Type	Size
							Conc
							%

Fluid Data										
Stage/Plug #: 1										
Fluid #	Stage Type	Fluid Name	Qty	Qty uom	Mixing Density lbm/gal	Yield ft ³ /sk	Mix Fluid Gal/sk	Rate bbl/min	Total Mix Fluid Gal/sk	
1	DYE SPACER AND POLYFLAKE		30.00	bbl	.	.0	.0	.0		
2	Lead Cement	VERSACEM (TM) SYSTEM (452010)	120.0	sacks	12.3	2.38	13.75			
	2 %	CAL-SEAL 60, 50 LB BAG (101217146)								
	2 %	ECONOLITE (100001580)								
	0.3 %	VERSASET, 55 LB SK (101376573)								
	5.64 lbm	SALT, 100 LB BAG (100003652)								
	0.125 lbm	POLY-E-FLAKE (101216940)								
	0.25 %	D-AIR 3000 (101007446)								
	13.75 Gal	FRESH WATER								
3	Tail Cement	VERSACEM (TM) SYSTEM (452010)	150.0	sacks	12.8	2.11	11.75			
	2 %	CAL-SEAL 60, 50 LB BAG (101217146)								
	2 %	ECONOLITE (100001580)								
	0.3 %	VERSASET, 55 LB SK (101376573)								
	5.64 lbm	SALT, 100 LB BAG (100003652)								
	11.75 Gal	FRESH WATER								
4	DISPLACEMENT			bbl	.	.0	.0	.0		
Calculated Values		Pressures		Volumes						
Displacement	62.2	Shut In: Instant		Lost Returns		Cement Slurry	107.1	Pad		
Top Of Cement	SURFACE	5 Min		Cement Returns	8	Actual Displacement	62.2	Treatment		
Frac Gradient		15 Min		Spacers	28	Load and Breakdown		Total Job		
Rates										
Circulating	4	Mixing	6	Displacement	9	Avg. Job	7			
Cement Left In Pipe	Amount	40 ft	Reason	Shoe Joint						
Frac Ring # 1 @	ID	Frac ring # 2 @	ID	Frac Ring # 3 @	ID	Frac Ring # 4 @	ID			
The Information Stated Herein Is Correct				Customer Representative Signature						

The Road to Excellence Starts with Safety

Sold To #: 338668		Ship To #: 2713344		Quote #:		Sales Order #: 6668605	
Customer: CHEVRON - MID-CONTINENT EBIZ				Customer Rep: Doherty, Ed			
Well Name: SKR			Well #: 698-09-AV-06		API/UWI #: 05-045-17301		
Field: SKINNER RIDGE		City (SAP): PARACHUTE		County/Parish: Garfield		State: Colorado	
Legal Description:							
Lat: N 39.551 deg. OR N 39 deg. 33 min. 3.528 secs.				Long: W 108.33 deg. OR W -109 deg. 40 min. 12.688 secs.			
Contractor: H&P 318			Rig/Platform Name/Num: H&P 318				
Job Purpose: Cement Surface Casing						Ticket Amount:	
Well Type: Development Well			Job Type: Cement Surface Casing				
Sales Person: HARTLEY, RICHARD			Srcv Supervisor: MAIN, CHAD			MBU ID Emp #: 335770	

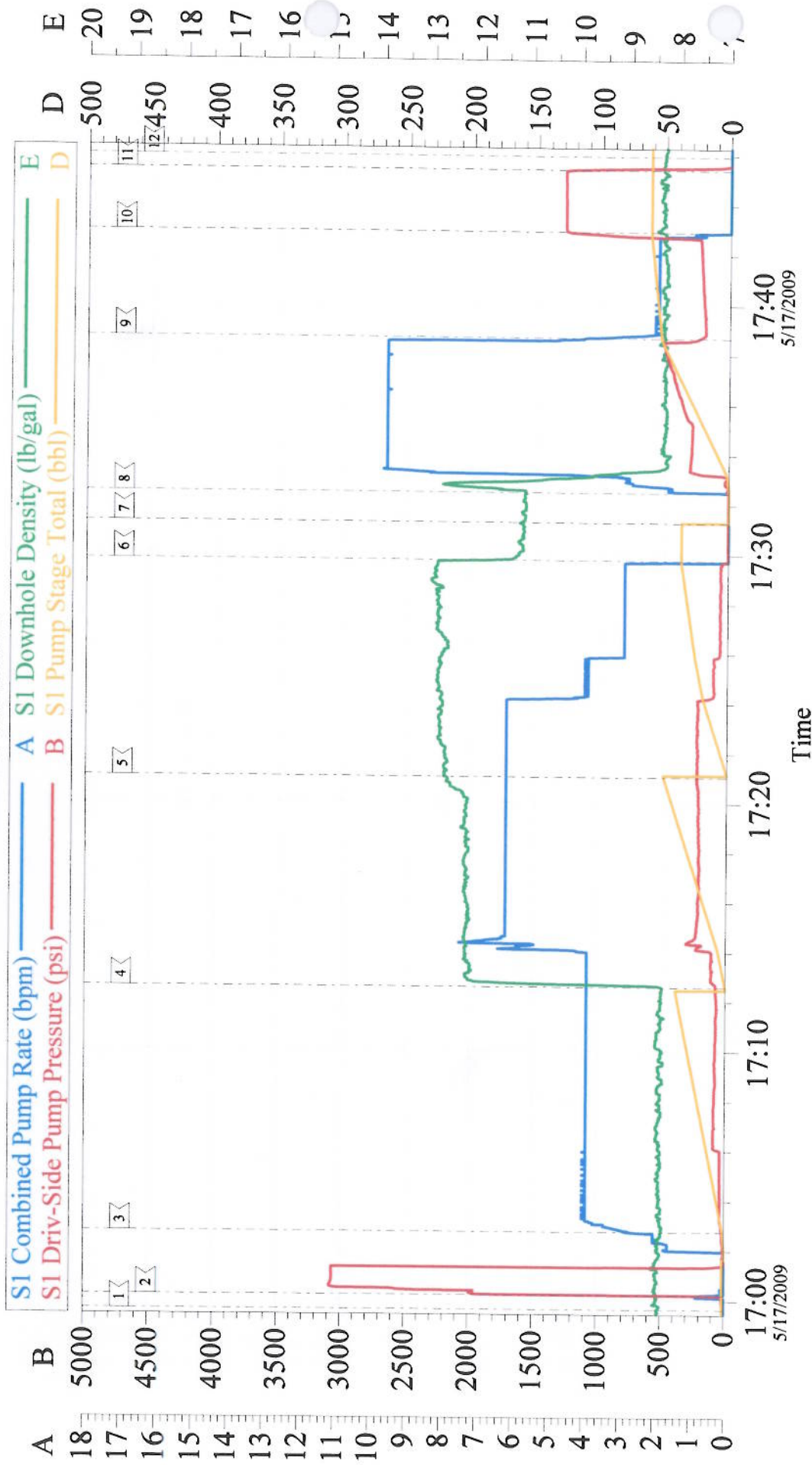
Activity Description	Date/Time	Cht #	Rate bbl/min	Volume bbl		Pressure psig		Comments
				Stage	Total	Tubing	Casing	
Arrive At Loc	05/17/2009 14:30							TD 1030' CSG 1018' SJ 40' MUD 9.0 PPG
Assessment Of Location Safety Meeting	05/17/2009 14:40							RIG WAS STILL RUNNING CASING WHEN HES ARRIVED
Pre-Rig Up Safety Meeting	05/17/2009 14:50							
Rig-Up Equipment	05/17/2009 15:00							
Rig-Up Completed	05/17/2009 16:00							
Pre-Job Safety Meeting	05/17/2009 16:45							RIG CIRCULATED ON WELL 1 HR BEFORE STARTING CEMENT JOB
Start Job	05/17/2009 16:59							NO PIPE MOVEMENT DURING CEMENT JOB
Pressure Test	05/17/2009 17:00						3000.0	
Pump Spacer 1	05/17/2009 17:02			38			43.0	H2O SPACER WITH 5 LBS RED DYE AND 25 LBS OF PLOY E FLAKE HES HAD FULL CIRCULATION ENTIRE JOB
Pump Lead Cement	05/17/2009 17:12			50.8			240.0	120 SKS AT 12.3 PPG 2.38 FT3/SK 13.75 GAL/SK

Cementing Job Log

Activity Description	Date/Time	Cht #	Rate bbl/min	Volume bbl		Pressure psig		Comments
				Stage	Total	Tubing	Casing	
Pump Tail Cement	05/17/2009 17:21			36.6			230.0	150 SKS AT 12.8 PPG 2.11 FT3/SK 11.75 GAL/SK DURING PUMPING TAIL CEMENT HES RAN OUT OF CEMENT 19.7 BBLS SHORT OF TOTAL VOLUME CUSTOMER CALLED FOR WHICH WAS 56.3 BBLS
Shutdown	05/17/2009 17:29							
Drop Top Plug	05/17/2009 17:31							
Pump Displacement	05/17/2009 17:32			62.2			300.0	DISPLACE WITH H2O
Bump Plug	05/17/2009 17:42			62.2			1275.0	HES RETURNED TO SURFACE 8 BBLS OF CEMENT
Check Floats	05/17/2009 17:45							FLOATS HELD
End Job	05/17/2009 17:46							
Pre-Rig Down Safety Meeting	05/17/2009 17:55							
Rig-Down Equipment	05/17/2009 18:00							
Rig-Down Completed	05/17/2009 19:30							
Depart Location for Service Center or Other Site	05/17/2009 20:00							
Other	05/17/2009 20:01							THANK YOU FOR USING HALLIBURTON GRAND JUNCTION

CHEVRON

8.625 SURFACE



Customer: CHEVRON	Job Date: 17-May-2009	Sales Order #: 6668605
Well Description: SKR 698-09-AV-06	Job Type: SURFACE	ADC Used: YES
Company Rep: ED DOHERTY	Cement Supervisor: CHAD MAIN	Elite #: 8