
CHEVRON - MID-CONTINENT EBIZ

**SKR 698-09-AV-06
SKINNER RIDGE
Garfield County , Colorado**

Cement Production Casing
20-May-2009

Job Site Documents

The Road to Excellence Starts with Safety

Sold To #: 338668	Ship To #: 2713344	Quote #:	Sales Order #: 6680031
Customer: CHEVRON - MID-CONTINENT EBIZ	Customer Rep: DOHERTY, ED		
Well Name: SKR	Well #: 698-09-AV-06	API/UWI #: 05-045-17301	
Field: SKINNER RIDGE	City (SAP): PARACHUTE	County/Parish: Garfield	State: Colorado
Lat: N 39.551 deg. OR N 39 deg. 33 min. 3.528 secs.	Long: W 108.33 deg. OR W -109 deg. 40 min. 12.688 secs.		
Contractor: H&P 318	Rig/Platform Name/Num: H&P 318		
Job Purpose: Cement Production Casing			
Well Type: Development Well	Job Type: Cement Production Casing		
Sales Person: DUNNING, DUSTIN	Srv Supervisor: STILLSON, ERIC	MBU ID Emp #: 393789	

Job Personnel

HES Emp Name	Exp Hrs	Emp #	HES Emp Name	Exp Hrs	Emp #	HES Emp Name	Exp Hrs	Emp #
BROST, ROBERT W	11	394382	HUGHES, STEVEN Shane	11	300140	SMITH, CHRISTOPHER Scott	11	452619
STILLSON, ERIC W	11	393789	Sullivan, Mark	11	425453	Wilke, Andrew	11	398822

Equipment

HES Unit #	Distance-1 way	HES Unit #	Distance-1 way	HES Unit #	Distance-1 way	HES Unit #	Distance-1 way
10722398	120 mile	10724583	120 mile	10829462	120 mile	10872429	120 mile
10893932	120 mile	10897909	120 mile				

Job Hours

Date	On Location Hours	Operating Hours	Date	On Location Hours	Operating Hours	Date	On Location Hours	Operating Hours
05-20-09	7	2						

TOTAL Total is the sum of each column separately

Job

Job Times

Formation Name	Top	Bottom	Called Out	Date	Time	Time Zone
Formation Depth (MD)			On Location	20 - May - 2009	04:30	MST
Form Type	BHST		Job Started	20 - May - 2009	08:30	MST
Job depth MD	6190. ft	Job Depth TVD	Job Completed	20 - May - 2009	12:42	MST
Water Depth		Wk Ht Above Floor	Departed Loc	20 - May - 2009	14:14	MST
Perforation Depth (MD)	From	To		20 - May - 2009	16:00	MST

Well Data

Description	New / Used	Max pressure psig	Size in	ID in	Weight lbm/ft	Thread	Grade	Top MD ft	Bottom MD ft	Top TVD ft	Bottom TVD ft
7 7/8 Open Hole Section				7.875				1040.	6190.		
4 1/2 Production Casing	Unknown		4.5	4.	11.6				6170.		
8 5/8 Surface Casing	Unknown		8.625	8.097	24.				1040.		

Sales/Rental/3rd Party (HES)

Description	Qty	Qty uom	Depth	Supplier
PLUG,CMTG,TOP,4 1/2,HWE,3.65 MIN/4.14 MA	1	EA		
PORT. DAS W/CEMWIN;ACQUIRE W/HES, ZI	1	JOB		

Tools and Accessories

Type	Size	Qty	Make	Depth	Type	Size	Qty	Make	Depth	Type	Size	Qty	Make
Guide Shoe					Packer					Top Plug	4.5	1	
Float Shoe					Bridge Plug					Bottom Plug			
Float Collar					Retainer					SSR plug set			
Insert Float										Plug Container	4.5	1	
Stage Tool										Centralizers			

HALLIBURTON

Cementing Job Summary

Miscellaneous Materials											
Gelling Agt		Conc		Surfactant		Conc		Acid Type		Qty	Conc %
Treatment Fld		Conc		Inhibitor		Conc		Sand Type		Size	Qty
Fluid Data											
Stage/Plug #: 1											
Fluid #	Stage Type	Fluid Name			Qty	Qty uom	Mixing Density lbm/gal	Yield ft ³ /sk	Mix Fluid Gal/sk	Rate bbl/min	Total Mix Fluid Gal/sk
1	Dyed Polyflake Spacer				40.00	bbl	8.33	.0	.0	6.0	
2	Lead Cement	VARICEM (TM) CEMENT (452009)			310.0	sacks	12.8	1.61	7.31	6.0	7.7
7.704 Gal		FRESH WATER									
3	Tail Cement	VARICEM (TM) CEMENT (452009)			660.0	sacks	13.2	1.47	6.32	6.0	7.0
4	KCL DISPLACEMENT				95.00	bbl	8.45	.0	.0	8.0	
Calculated Values		Pressures			Volumes						
Displacement	94.9	Shut In: Instant			Lost Returns	0	Cement Slurry	261	Pad		
Top Of Cement		5 Min			Cement Returns	0	Actual Displacement	94	Treatment		
Frac Gradient		15 Min			Spacers	40	Load and Breakdown		Total Job		
Rates											
Circulating	RIG	Mixing	6			Displacement	8		Avg. Job	7	
Cement Left In Pipe	Amount	47 ft	Reason	Shoe Joint							
Frac Ring # 1 @	ID	Frac ring # 2 @	ID	Frac Ring # 3 @	ID	Frac Ring # 4 @	ID				
The Information Stated Herein Is Correct				Customer Representative Signature							

The Road to Excellence Starts with Safety

Sold To #: 338668	Ship To #: 2713344	Quote #:	Sales Order #: 6680031
Customer: CHEVRON - MID-CONTINENT EBIZ	Customer Rep: DOHERTY, ED		
Well Name: SKR	Well #: 698-09-AV-06	API/UWI #: 05-045-17301	
Field: SKINNER RIDGE	City (SAP): PARACHUTE	County/Parish: Garfield	State: Colorado
Legal Description:			
Lat: N 39.551 deg. OR N 39 deg. 33 min. 3.528 secs.		Long: W 108.33 deg. OR W -109 deg. 40 min. 12.688 secs.	
Contractor: H&P 318	Rig/Platform Name/Num: H&P 318		
Job Purpose: Cement Production Casing	Ticket Amount:		
Well Type: Development Well	Job Type: Cement Production Casing		
Sales Person: DUNNING, DUSTIN	Srvc Supervisor: STILLSON, ERIC	MBU ID Emp #: 393789	

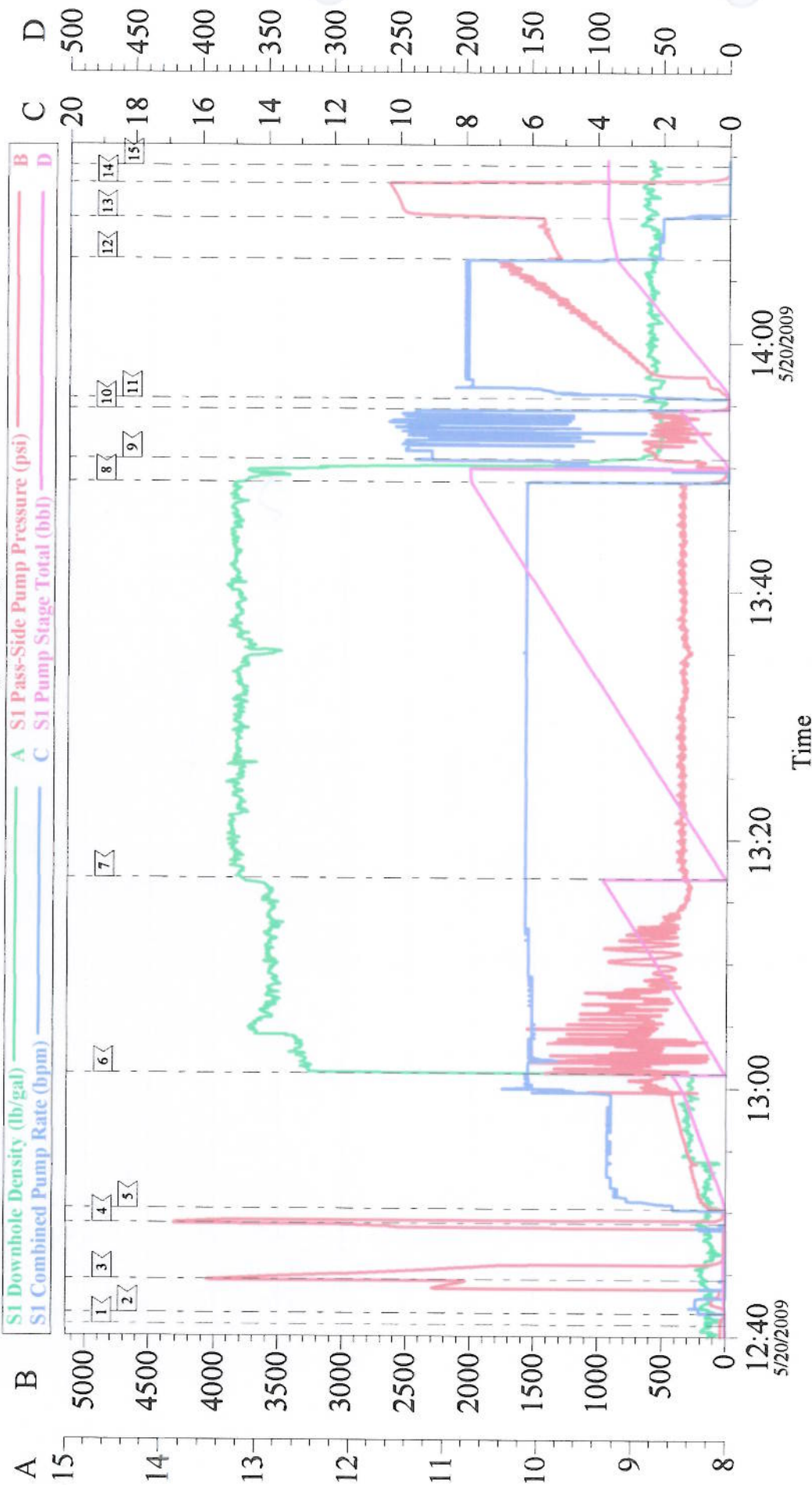
Activity Description	Date/Time	Cht #	Rate bbl/min	Volume bbl		Pressure psig		Comments
				Stage	Total	Tubing	Casing	
Call Out	05/20/2009 04:30							4 1/2 PRODUCTION CHEVRON SKR 698-09-AV-06
Pre-Convoy Safety Meeting	05/20/2009 06:30							ENTIRE CREW, COMMUNICATED ALL DRIVING HAZARDS AND SAFETY.
Arrive At Loc	05/20/2009 08:30							ARRIVED EARLY, RIG STILL RUNNING CASING
Assessment Of Location Safety Meeting	05/20/2009 08:35							SPOT EQUIPMENT, USE TARP UNDER PUMP
Pre-Rig Up Safety Meeting	05/20/2009 08:55							ENTIRE CREW, WALKED THROUGH RIG UP LOOKING FOR HAZARDS
Rig-Up Equipment	05/20/2009 09:00							1 PICK UP, 1 HT400 PUMP TRUCK, 1 660 BULK CEMENT TRUCK BLEW INTO BIN, 1 BULK CEMENT BIN, 1 COMPACT HEAD WITH PLUG
Pre-Job Safety Meeting	05/20/2009 10:41							ENTIRE CREW, CO REP AND RIG CREW
Start Job	05/20/2009 12:42							TD 6190 TP 6170 SJ 47 FC 6123 MW 10.4 PPG, 4 1/2" 11.6# CSG IN 7 7/8" HOLE. 8 5/8 24# SURFACE CSG AT 1040.
Pump Water	05/20/2009 12:42		1	1			113.0	FILL LINES BEFORE TESTING

Activity Description	Date/Time	Cht #	Rate bbl/min	Volume bbl		Pressure psig		Comments
				Stage	Total	Tubing	Casing	
Pressure Test	05/20/2009 12:43		0.5	0.2			4300.0	HAD A LEAK, FIXED PROBLEM AND RETESTED. PRESSURE HELD NO LEAKS.
Pump Spacer 1	05/20/2009 12:49		6	40			600.0	FRESH WATER WITH 1 BAG POLYFLAKE AND RED DYE. PUMPED AT 4 BPM UNTIL CEMENT TUB UP AND WEIGHED WITH SCALES. SPED RATE TO 6 BPM AT 30 BBLS GONE.
Pump Lead Cement	05/20/2009 13:00		6	88.3			777.0	310 SKS VARICEM, 12.8 PPG, 1.6 CUFT/SK, 7.31 GAL/SK
Pump Tail Cement	05/20/2009 13:16		6	172.8			383.0	660 SKS VARICEM, 13.2 PPG, 1.47 CUFT/SK, 6.32 GAL/SK
Shutdown	05/20/2009 13:48							
Clean Lines	05/20/2009 13:49							CLEAN LINES AND PUMP BEFORE DROPPING PLUG
Drop Top Plug	05/20/2009 13:54							VERIFIED PLUG LEFT
Pump Displacement	05/20/2009 13:55		8	94.9			1781.0	KCL WATER, 1.5 SKS KCL PER 10 BBLS, CAUGHT PRESSURE AT 15 BBLS GONE
Slow Rate	05/20/2009 14:06		2	85			1500.0	SLOW RATE TO BUMP PLUG
Bump Plug	05/20/2009 14:11		2	94.9			2530.0	PLUG LANDED, BUMPED 1000 PSI OVER PER CO REP.
Check Floats	05/20/2009 14:13							FLOATS HELD, WHEN RELEASED PRESSURE GOT 1 BBL OF WATER BACK TO TRUCK.

Cementing Job Log

Activity Description	Date/Time	Cht #	Rate bbl/ min	Volume bbl		Pressure psig		Comments
				Stage	Total	Tubing	Casing	
End Job	05/20/2009 14:14							GOOD RETURNS THROUGHOUT JOB, DID NOT MOVE PIPE. SAW DYE AND POLY BACK AT 75 BBLS GONE ON DISPLACEMENT, NO CEMENT TO SURFACE.
Post-Job Safety Meeting (Pre Rig-Down)	05/20/2009 14:20							ENTIRE CREW
Rig-Down Equipment	05/20/2009 14:30							BLEW DOWN BIN
Pre-Convoy Safety Meeting	05/20/2009 15:50							ENTIRE CREW
Crew Leave Location	05/20/2009 16:00							THANK YOU FOR USING HALLIBURTON, ERIC STILLSON AND CREW.

4.5 Inch Longstring



Customer: CHEVRON - MID-CONTINENT
 Well Description: Skinner Ridge 698-09-AV-06
 Company Rep: Ronnic Moeller

Job Date: 20-May-2009
 Job Type: Production
 Cement Supervisor: Eric Stilson

Sales Order #: 6680031
 ADC Used: Yes
 Elite #/Operator: 11/Chris Smith