

**CHEVRON - MID-CONTINENT EBIZ
11111 S WILCREST DR - DO NOT MAIL
HOUSTON, Texas**

SKR
SKR 698-09-AV-05

H&P 318/H&P/318

Post Job Summary

Cement Production Casing

Prepared for:
Date Prepared:
Version: 1

Service Supervisor: MILLER, KEVIN

Submitted by:

HALLIBURTON

The Road to Excellence Starts with Safety

Sold To #: 338668	Ship To #: 2713343	Quote #:	Sales Order #: 6710046
Customer: CHEVRON - MID-CONTINENT EBIZ	Customer Rep: DOHERTY, ED		
Well Name: SKR	Well #: 698-09-AV-05	API/UWI #: 05-045-17299	
Field: SKINNER RIDGE	City (SAP): PARACHUTE	County/Parish: Garfield	State: Colorado
Lat: N 39.551 deg. OR N 39 deg. 33 min. 3.564 secs.	Long: W 108.33 deg. OR W -109 deg. 40 min. 12.806 secs.		
Contractor: H&P 318	Rig/Platform Name/Num: H&P 318		
Job Purpose: Cement Production Casing			
Well Type: Development Well	Job Type: Cement Production Casing		
Sales Person: HARTLEY, RICHARD	Srv Supervisor: MILLER, KEVIN	MBU ID Emp #: 443040	

Job Personnel

HES Emp Name	Exp Hrs	Emp #	HES Emp Name	Exp Hrs	Emp #	HES Emp Name	Exp Hrs	Emp #
ARNOLD, EDWARD John	4	439784	BROWN, TRAVIS A	1	396848	GREGORY, JON D	4	439067
MAIN, CHAD R	4	335770	MILLER, KEVIN Paul	4	443040	SLAUGHTER, JESSE Dean	4	454315

Equipment

HES Unit #	Distance-1 way	HES Unit #	Distance-1 way	HES Unit #	Distance-1 way	HES Unit #	Distance-1 way
10533645	60 mile	10722398	60 mile	10822535	60 mile	10857016	60 mile
10871245	60 mile	10893932	60 mile	10938658	60 mile	10951247	60 mile

Job Hours

Date	On Location Hours	Operating Hours	Date	On Location Hours	Operating Hours	Date	On Location Hours	Operating Hours
6/6/09	6.5	4						
TOTAL								

Total is the sum of each column separately

Job

Formation Name	Formation Depth (MD)	Top	Bottom	Form Type	Job depth MD	Job Depth TVD	Water Depth	Perforation Depth (MD)	From	To
				BHST	6700. ft	6700. ft				
							Wk Ht Above Floor			
							4. ft			

Job Times

Date	Time	Time Zone
06 - Jun - 2009	04:45	MST
06 - Jun - 2009	10:30	MST
06 - Jun - 2009	12:00	MST
06 - Jun - 2009	13:31	MST
06 - Jun - 2009	16:00	MST

Well Data

Description	New / Used	Max pressure psig	Size in	ID in	Weight lbm/ft	Thread	Grade	Top MD ft	Bottom MD ft	Top TVD ft	Bottom TVD ft
7 7/8 Open Hole Section				7.875				998.	6700.		
4 1/2 Production Casing	Unknown		4.5	4.	11.6			.	6678.		
8 5/8 Surface Casing	Unknown		8.625	8.097	24.			.	998.		

Sales/Rental/3rd Party (HES)

Description	Qty	Qty uom	Depth	Supplier
PLUG,CMTG,TOP,4 1/2,HWE,3.65 MIN/4.14 MA	1	EA		
PORT. DAS W/CEMWIN;ACQUIRE W/HES, ZI	1	JOB		
ADC (AUTO DENSITY CTRL) SYS, /JOB,ZI	1	JOB		

Tools and Accessories

Type	Size	Qty	Make	Depth	Type	Size	Qty	Make	Depth	Type	Size	Qty	Make
Guide Shoe					Packer					Top Plug	4.5	1	HES
Float Shoe					Bridge Plug					Bottom Plug			
Float Collar					Retainer					SSR plug set			
Insert Float										Plug Container	4.5	1	HES
Stage Tool										Centralizers			

Miscellaneous Materials													
Gelling Agt		Conc		Surfactant		Conc		Acid Type		Qty		Conc	%
Treatment Fld		Conc		Inhibitor		Conc		Sand Type		Size		Qty	
Fluid Data													
Stage/Plug #: 1													
Fluid #	Stage Type	Fluid Name			Qty	Qty uom	Mixing Density lbm/gal	Yield ft ³ /sk	Mix Fluid Gal/sk	Rate bbl/min	Total Mix Fluid Gal/sk		
1	Dyed Spacer				40.00	bbl	8.33	.0	.0	.0			
2	Lead Cement	VARICEM (TM) CEMENT (452009)			400.0	sacks	12.8	1.61	7.31		7.7		
	7.704 Gal	FRESH WATER											
3	Tail Cement	VARICEM (TM) CEMENT (452009)			660.0	sacks	13.2	1.47	6.32		6.72		
	6.719 Gal	FRESH WATER											
4	KCL Displacement				103.00	bbl	.	.0	.0	.0			
Calculated Values				Pressures			Volumes						
Displacement	102.7	Shut In: Instant			Lost Returns	0	Cement Slurry	287.5	Pad				
Top Of Cement	SURFACE	5 Min			Cement Returns	0	Actual Displacement	102.7	Treatment				
Frac Gradient		15 Min			Spacers	40	Load and Breakdown		Total Job				
Rates													
Circulating	6.5	Mixing		7	Displacement	7	Avg. Job		7				
Cement Left In Pipe	Amount	47 ft	Reason	Shoe Joint									
Frac Ring # 1 @	ID	Frac ring # 2 @	ID	Frac Ring # 3 @	ID	Frac Ring # 4 @	ID						
The Information Stated Herein Is Correct					Customer Representative Signature								

The Road to Excellence Starts with Safety

Sold To #: 338668		Ship To #: 2713343		Quote #:		Sales Order #: 6710046	
Customer: CHEVRON - MID-CONTINENT EBIZ				Customer Rep: DOHERTY, ED			
Well Name: SKR			Well #: 698-09-AV-05			API/UWI #: 05-045-17299	
Field: SKINNER RIDGE		City (SAP): PARACHUTE		County/Parish: Garfield		State: Colorado	
Legal Description:							
Lat: N 39.551 deg. OR N 39 deg. 33 min. 3.564 secs.				Long: W 108.33 deg. OR W -109 deg. 40 min. 12.806 secs.			
Contractor: H&P 318			Rig/Platform Name/Num: H&P 318				
Job Purpose: Cement Production Casing						Ticket Amount:	
Well Type: Development Well			Job Type: Cement Production Casing				
Sales Person: HARTLEY, RICHARD			Srvc Supervisor: MILLER, KEVIN			MBU ID Emp #: 443040	

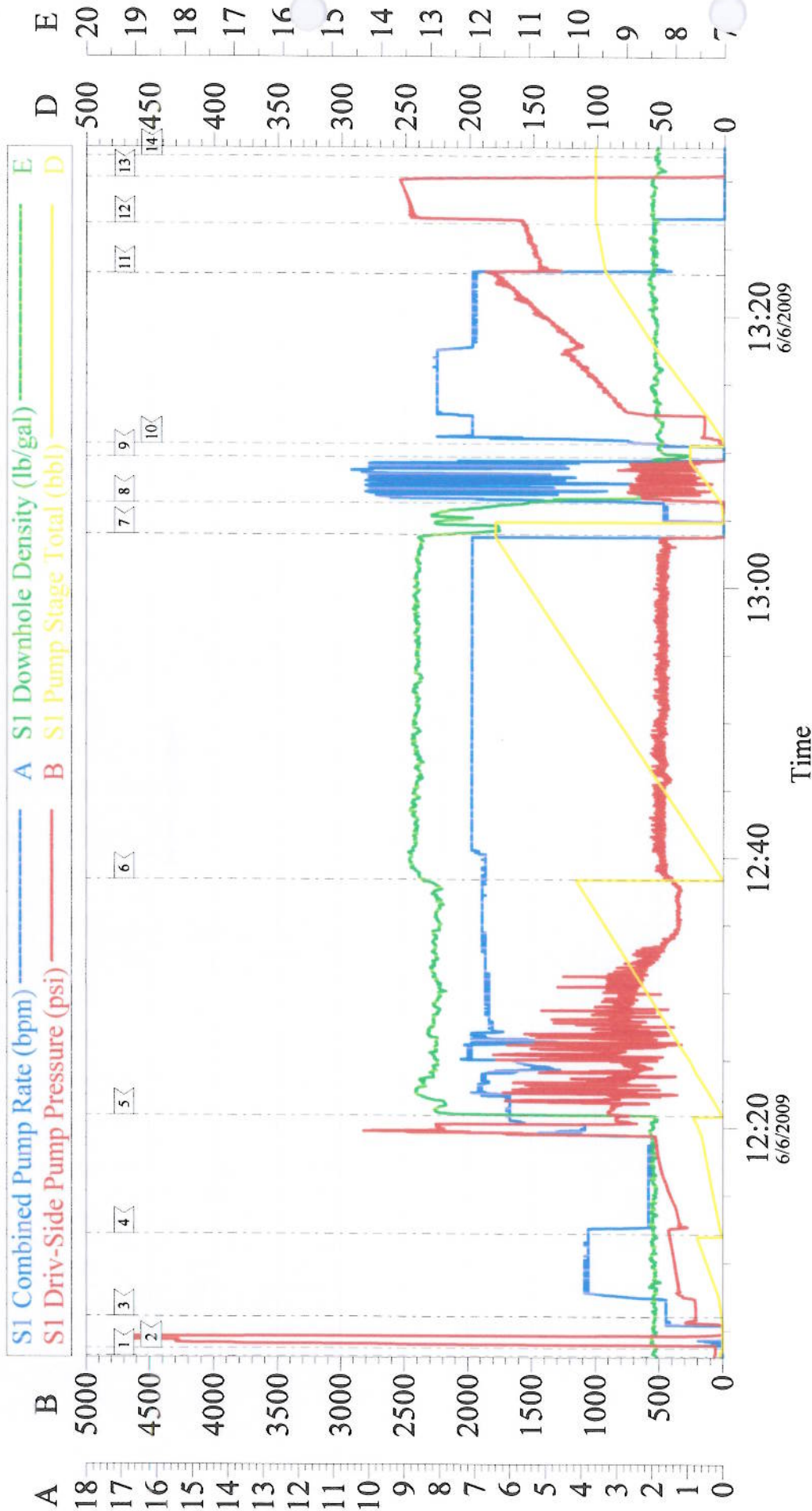
Activity Description	Date/Time	Cht #	Rate bbl/min	Volume bbl		Pressure psig		Comments
				Stage	Total	Tubing	Casing	
Arrive At Loc	06/06/2009 10:30							TD-6700, TP-6678, SJ-47, MUD-10.4LB, 8 5/8 24IB SURFACE CASING @998
Assessment Of Location Safety Meeting	06/06/2009 10:45							ALL HES PERSONEL
Pre-Rig Up Safety Meeting	06/06/2009 10:55							ALL HES PERSONEL
Rig-Up Equipment	06/06/2009 11:00							
Rig-Up Completed	06/06/2009 11:20							
Pre-Job Safety Meeting	06/06/2009 11:40							ALL HES PERSONEL, AND RIG CREW
Start Job	06/06/2009 12:00							
Pressure Test	06/06/2009 12:03						4500.0	4500 PSI
Pump Spacer 1	06/06/2009 12:05		4	20			450.0	H2O
Pump Spacer 2	06/06/2009 12:12		4	20			450.0	POLYFLAKE AND RED DYE
Pump Lead Cement	06/06/2009 12:20		7	114			2200.0	400 SKS, 12.8 LB, 1.6 YEILD, 7.31 H2O REQ SHOWED A PRESSURE SPIKE WHILE ON LEAD CMT DUE TO BULK HOSE PARTIALLY CHOKING OFF DOWN HOLE 2" LOW TORQ VALVE
Pump Tail Cement	06/06/2009 12:38		7	172.8			540.0	660 SKS, 13.2 LB, 1.47 YEILD, 6.32 H2O REQ
Shutdown	06/06/2009 13:03							
Clean Lines	06/06/2009 13:06			20				

Cementing Job Log

Activity Description	Date/Time	Cht #	Rate bbl/ min	Volume bbl		Pressure psig		Comments
				Stage	Total	Tubing	Casing	
Drop Plug	06/06/2009 13:09							
Pump Displacement	06/06/2009 13:10		7	102.7				1 1/2 SKS KCL PER 10 BBL H2O, GOT SPACER BACK TO SURFACE @ 85 BBL GONE ON DISPLACEMENT
Bump Plug	06/06/2009 13:26		2	102.7			2500. 0	SLOWED RATE @ 92 BBL AWAY
Check Floats	06/06/2009 13:30							FLOATS HELD, 1 BBL BACK
End Job	06/06/2009 13:31							
Safety Meeting - Pre Rig-Down	06/06/2009 13:35							ALL HES PERSONEL
Rig-Down Equipment	06/06/2009 13:50							
Rig-Down Completed	06/06/2009 14:50							
Depart Location Safety Meeting	06/06/2009 16:00							ALL HES PERSONEL
Other	06/06/2009 16:01							THANK YOU FOR USING HALLIBURTON GRAND JUNCTION KEVIN MILLER AND CREW

CHEVRON H&P 318

PRODUCTION WELL SKR 698-09-AV-05



Customer: CHEVRON	Job Date: 06-Jun-2009	Sales Order #: 6710046
Well Description: SKR 698-09-AV-05	Job Type: PRODUCTION	ADC Used: YES
Company Rep: ED DOHERTY	Cement Supervisor: KEVIN MILLER	Elite #: 8