

**HALLIBURTON**

---

# **CHEVRON - MID-CONTINENT EBIZ**

---

**SKR SKR 698-09-AV-05  
SKINNER RIDGE  
Garfield County , Colorado**

**Cement Surface Casing  
13-May-2009**

**Job Site Documents**

### The Road to Excellence Starts with Safety

Sold To #: 338668		Ship To #: 2713343		Quote #:		Sales Order #: 6667764	
Customer: CHEVRON - MID-CONTINENT EBIZ				Customer Rep: MEIER, DAN			
Well Name: SKR		Well #: SKR 698-09-AV-05		API/UWI #: 05-045-17299			
Field: SKINNER RIDGE		City (SAP): PARACHUTE		County/Parish: Garfield		State: Colorado	
Lat: N 39.551 deg. OR N 39 deg. 33 min. 3.564 secs.				Long: W 108.33 deg. OR W -109 deg. 40 min. 12.806 secs.			
Contractor: H&P 318		Rig/Platform Name/Num: H&P 318					
Job Purpose: Cement Surface Casing							
Well Type: Development Well				Job Type: Cement Surface Casing			
Sales Person: DUNNING, DUSTIN				Srv Supervisor: NELSON, RYAN		MBU ID Emp #: 386514	
<b>Job Personnel</b>							
HES Emp Name	Exp Hrs	Emp #	HES Emp Name	Exp Hrs	Emp #	HES Emp Name	Exp Hrs
BROWN, TRAVIS A	5.5	396848	JENSEN, SHANE Lynn	5.5	441759	LEIST, JAMES R	5.5
NELSON, RYAN	5.5	386514					
Cody							
<b>Equipment</b>							
HES Unit #	Distance-1 way	HES Unit #	Distance-1 way	HES Unit #	Distance-1 way	HES Unit #	Distance-1 way
10567589C	60 mile	10893932	60 mile	10951245	60 mile	10995027	60 mile
<b>Job Hours</b>							
Date	On Location Hours	Operating Hours	Date	On Location Hours	Operating Hours	Date	On Location Hours
5-13-09	4.5	1.5	5-14-09	1	1		
TOTAL		Total is the sum of each column separately					
<b>Job</b>							
Formation Name				Job Times			
Formation Depth (MD) Top		Bottom		Called Out	Date	Time	Time Zone
Form Type		BHST		On Location	13 - May - 2009	16:00	MST
Job depth MD		Job Depth TVD		Job Started	13 - May - 2009	19:30	MST
Water Depth		Wk Ht Above Floor		Job Completed	13 - May - 2009	22:50	MST
Perforation Depth (MD) From		To		Departed Loc	13 - May - 2009	23:40	MST
					14 - May - 2009	01:00	MST
<b>Well Data</b>							
Description	New / Used	Max pressure psig	Size in	ID in	Weight lbm/ft	Thread	Grade
							Top MD ft
							Bottom MD ft
							Top TVD ft
							Bottom TVD ft
<b>Sales/Rental/3<sup>rd</sup> Party (HES)</b>							
Description				Qty	Qty uom	Depth	Supplier
PLUG,CMTG,TOP,8 5/8,HVE,7.20 MIN/8.09 MA				1	EA		
ADC (AUTO DENSITY CTRL) SYS, /JOB,ZI				1	JOB		
<b>Tools and Accessories</b>							
Type	Size	Qty	Make	Depth	Type	Size	Qty
Guide Shoe					Packer		
Float Shoe					Bridge Plug		
Float Collar					Retainer		
Insert Float							
Stage Tool							
					Type	Size	Qty
					Top Plug	8 5/8	1
					Bottom Plug		
					SSR plug set		
					Plug Container	8 5/8	1
					Centralizers		
<b>Miscellaneous Materials</b>							
Gelling Agt		Conc		Surfactant		Conc	
Treatment Fld		Conc		Inhibitor		Conc	
				Acid Type		Qty	Conc %
				Sand Type		Size	Qty



**HALLIBURTON****Cementing Job Summary**

Fluid Data									
Stage/Plug #: 1									
Fluid #	Stage Type	Fluid Name	Qty	Qty uom	Mixing Density lbm/gal	Yield ft <sup>3</sup> /sk	Mix Fluid Gal/sk	Rate bbl/min	Total Mix Fluid Gal/sk
1	DYE SPACER AND POLYFLAKE		30.00	bbl	8.33	.0	.0	.0	
2	Lead Cement	VERSACEM (TM) SYSTEM (452010)	120.0	sacks	12.3	2.38	13.75		
3	Tail Cement	VERSACEM (TM) SYSTEM (452010)	150.0	sacks	12.8	2.11	11.75		
4	DISPLACEMENT		60.7	bbl	8.33	.0	.0	.0	
Calculated Values		Pressures		Volumes					
Displacement	60.7	Shut In: Instant		Lost Returns	NO	Cement Slurry	107.3	Pad	
Top Of Cement	0	5 Min		Cement Returns	40BBL	Actual Displacement	60.7	Treatment	
Frac Gradient		15 Min		Spacers		Load and Breakdown		Total Job	
<b>Rates</b>									
Circulating		Mixing	6	Displacement	8	Avg. Job	6.8		
Cement Left In Pipe	Amount	42 ft	Reason	Shoe Joint					
Frac Ring # 1 @	ID	Frac ring # 2 @	ID	Frac Ring # 3 @	ID	Frac Ring # 4 @	ID		
The Information Stated Herein Is Correct				Customer Representative Signature					

**HALLIBURTON****Cementing Job Log****The Road to Excellence Starts with Safety**

Sold To #: 338668	Ship To #: 2713343	Quote #:	Sales Order #: 6667764
Customer: CHEVRON - MID-CONTINENT EBIZ	Customer Rep: MEIER, DAN		
Well Name: SKR	Well #: SKR 698-09-AV-05	API/UWI #: 05-045-17299	
Field: SKINNER RIDGE	City (SAP): PARACHUTE	County/Parish: Garfield	State: Colorado
Legal Description:			
Lat: N 39.551 deg. OR N 39 deg. 33 min. 3.564 secs.		Long: W 108.33 deg. OR W -109 deg. 40 min. 12.806 secs.	
Contractor: H&P 318	Rig/Platform Name/Num: H&P 318		
Job Purpose: Cement Surface Casing	Ticket Amount:		
Well Type: Development Well	Job Type: Cement Surface Casing		
Sales Person: DUNNING, DUSTIN	Srvs Supervisor: NELSON, RYAN	MBU ID Emp #: 386514	

Activity Description	Date/Time	Cht #	Rate bbl/min	Volume bbl		Pressure psig		Comments
				Stage	Total	Tubing	Casing	
Call Out	05/13/2009 16:15							
Arrive At Loc	05/13/2009 19:30							Rig running casing
Assessment Of Location Safety Meeting	05/13/2009 19:35							
Pre-Rig Up Safety Meeting	05/13/2009 19:40							
Rig-Up Equipment	05/13/2009 19:45							
Pre-Job Safety Meeting	05/13/2009 22:30							
Start Job	05/13/2009 22:50							TD- 1013' TP-997' SJ-42' CASING 8 5/8" 24# J-55 HOLE 12 1/4" MUD 9.2
Other	05/13/2009 22:51			1				Fill lines
Test Lines	05/13/2009 22:53						3500.0	
Pump Spacer 1	05/13/2009 22:54		6	30			140.0	Fresh water with Poly-Flake and Red Dye. BP-16
Pump Lead Cement	05/13/2009 23:04		6	50.9			250.0	120 Sks 12.3 ppg 2.38 yield 13.75 gal/sk BP-17
Pump Tail Cement	05/13/2009 23:12		6	56.4			230.0	150 Sks 12.8 ppg 2.11 yield 11.75 gal/sk BP-17
Shutdown	05/13/2009 23:24							
Drop Top Plug	05/13/2009 23:25							
Pump Displacement	05/13/2009 23:25		8	60.7			390.0	Fresh Water
Cement Returns to Surface	05/13/2009 23:28							Well circulated 40 bbls of cement to surface
Slow Rate	05/13/2009 23:33		2	50			320.0	

Sold To #: 338668

Ship To #: 2713343

Quote #:

Sales Order #:

6667764

SUMMIT Version: 7.20.130

Thursday, May 14, 2009 12:05:00



**HALLIBURTON*****Cementing Job Log***

Activity Description	Date/Time	Cht #	Rate bbl/ min	Volume bbl		Pressure psig		Comments
				Stage	Total	Tubing	Casing	
Bump Plug	05/13/2009 23:38		2	60.7			1500. 0	
Check Floats	05/13/2009 23:39							Floats held
End Job	05/13/2009 23:40							Well was circulated prior to the job. Good returns throughout the job. Pipe was static throughout the job. Thank you for using Halliburton-Ryan Nelson & Crew

Sold To # : 338668

Ship To # : 2713343

Quote # :

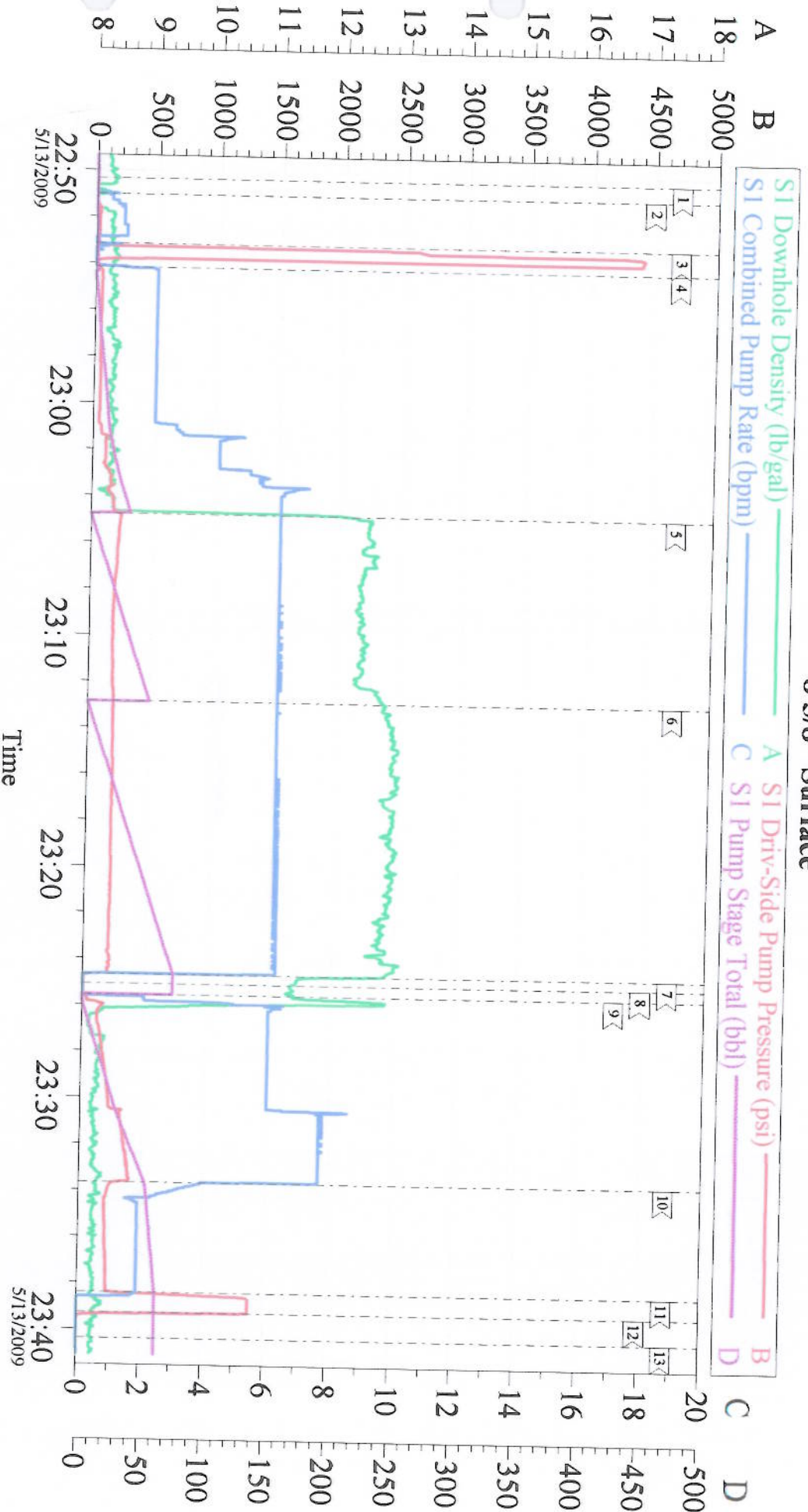
Sales Order # :

6667764

SUMMIT Version: 7.20.130

Thursday, May 14, 2009 12:05:00

# Chevron 8 5/8" Surface



Local Event Log			
1 Start Job	22:50:21	2 Fill Lines	22:51:01
4 Pump Spacer	22:54:11	5 Pump Lead Cement	23:04:47
7 Shut Down	23:24:41	8 Drop Plug	23:25:06
10 Slow Rate	23:33:40	11 Bump Plug	23:38:25
13 End Job	23:40:24	12 Check Float	23:39:17
		3 Pressure Test	22:53:09
		6 Pump Tail Cement	23:12:51
		9 Pump Displacement	23:25:33

Customer: Chevron	Job Date: 13-May-2009	Sales Order #: 6667764
Well Description: 698-09-AV-05	Job Type: Surface	ADC Used: Yes
Company Rep: Jonathan Lindsey	Cement Supervisor: Ryan Nelson	Elite #: 3