
CHEVRON - MID-CONTINENT EBIZ

**SKR 698-09-AV-03
SKINNER RIDGE
Garfield County , Colorado**

Cement Production Casing **03-Jun-2009**

Job Site Documents

The Road to Excellence Starts with Safety

Sold To #: 338668	Ship To #: 2713341	Quote #:	Sales Order #: 6704321
Customer: CHEVRON - MID-CONTINENT EBIZ	Customer Rep: MEIER, DAN		
Well Name: SKR	Well #: 698-09-AV-03	API/UWI #: 05-045-17281	
Field: SKINNER RIDGE	City (SAP): PARACHUTE	County/Parish: Garfield	State: Colorado
Lat: N 39.551 deg. OR N 39 deg. 33 min. 3.496 secs.	Long: W 108.33 deg. OR W -109 deg. 40 min. 12.842 secs.		
Contractor: H&P 318	Rig/Platform Name/Num: H&P 318		
Job Purpose: Cement Production Casing			
Well Type: Development Well	Job Type: Cement Production Casing		
Sales Person: DUNNING, DUSTIN	Srv Supervisor: YOUNG, JEREMY	MBU ID Emp #:	

Job Personnel

HES Emp Name	Exp Hrs	Emp #	HES Emp Name	Exp Hrs	Emp #	HES Emp Name	Exp Hrs	Emp #
BRADY, JERED Austin	7	213392	CLARKE, CRAIG	7	441763	LEIST, JAMES R	7	362787
SALAZAR, PAUL	7	445614	SAUTER, MARK A	7	410526	YOUNG, JEREMY	7	418013

Equipment

HES Unit #	Distance-1 way	HES Unit #	Distance-1 way	HES Unit #	Distance-1 way	HES Unit #	Distance-1 way
10951249	120 Miles	10995027- 10567589	120 Miles	10741259- 10025118	120 Miles	10985907 BIN 10893932	120 Miles

Job Hours

Date	On Location Hours	Operating Hours	Date	On Location Hours	Operating Hours	Date	On Location Hours	Operating Hours
06/03/2009	6	1.5	06/04/2009	1	0			
TOTAL								

Total is the sum of each column separately

Job

Formation Name	Formation Depth (MD)	Top	Bottom	Form Type	Job depth MD	Job Depth TVD	Water Depth	Perforation Depth (MD)	From	To
				BHST	6681. ft	6681. ft				
						3. ft				

Job Times

	Date	Time	Time Zone
Called Out	03 - Jun - 2009	14:30	MST
On Location	03 - Jun - 2009	18:00	MST
Job Started	03 - Jun - 2009	21:49	MST
Job Completed	03 - Jun - 2009	23:22	MST
Departed Loc	04 - Jun - 2009	01:00	MST

Well Data

Description	New / Used	Max pressure psig	Size in	ID in	Weight lbm/ft	Thread	Grade	Top MD ft	Bottom MD ft	Top TVD ft	Bottom TVD ft
OPEN HOLE				7.875				1015.	6710.		
PRODUCTION CASING	Unknown		4.5	4.	11.6		N-80		6681.		
SURFACE CASING	Unknown		8.625	8.097	24.				1015.		

Sales/Rental/3rd Party (HES)

Description	Qty	Qty uom	Depth	Supplier
PLUG,CMTG,TOP,4 1/2,HWE,3.65 MIN/4.14 MA	1	EA		
PORT. DAS W/CEMWIN;ACQUIRE W/HES, ZI	1	JOB		
ADC (AUTO DENSITY CTRL) SYS, /JOB,ZI	1	JOB		

Tools and Accessories

Type	Size	Qty	Make	Depth	Type	Size	Qty	Make	Depth	Type	Size	Qty	Make
Guide Shoe					Packer					Top Plug	4.5	1	HES
Float Shoe					Bridge Plug					Bottom Plug			
Float Collar					Retainer					SSR plug set			
Insert Float										Plug Container	4.5	1	HES
Stage Tool										Centralizers			

Miscellaneous Materials

Gelling Agt	Conc	Surfactant	Conc	Acid Type	Qty	Conc	%
Treatment Fld	Conc	Inhibitor	Conc	Sand Type	Size	Qty	

Fluid Data									
Stage/Plug #: 1									
Fluid #	Stage Type	Fluid Name	Qty	Qty uom	Mixing Density lbm/gal	Yield ft ³ /sk	Mix Fluid Gal/sk	Rate bbl/min	Total Mix Fluid Gal/sk
1	Dyed Spacer		40.00	bbl	8.33	.0	.0	.0	
2	Lead Cement	VARICEM (TM) CEMENT (452009)	420.0	sacks	12.8	1.6	7.31		
3	Tail Cement	VARICEM (TM) CEMENT (452009)	650.0	sacks	13.2	1.47	6.32		
4	KCL Displacement		102.00	bbl	8.4	.0	.0	.0	
Calculated Values		Pressures		Volumes					
Displacement	102	Shut In: Instant		Lost Returns	0	Cement Slurry	290	Pad	
Top Of Cement	0	5 Min		Cement Returns	0	Actual Displacement	102	Treatment	
Frac Gradient		15 Min		Spacers	40	Load and Breakdown		Total Job	
Rates									
Circulating	8.5	Mixing	6	Displacement	10	Avg. Job	8		
Cement Left In Pipe	Amount	46 ft	Reason	Shoe Joint					
Frac Ring # 1 @	ID	Frac ring # 2 @	ID	Frac Ring # 3 @	ID	Frac Ring # 4 @	ID		
The Information Stated Herein Is Correct				Customer Representative Signature					

The Road to Excellence Starts with Safety

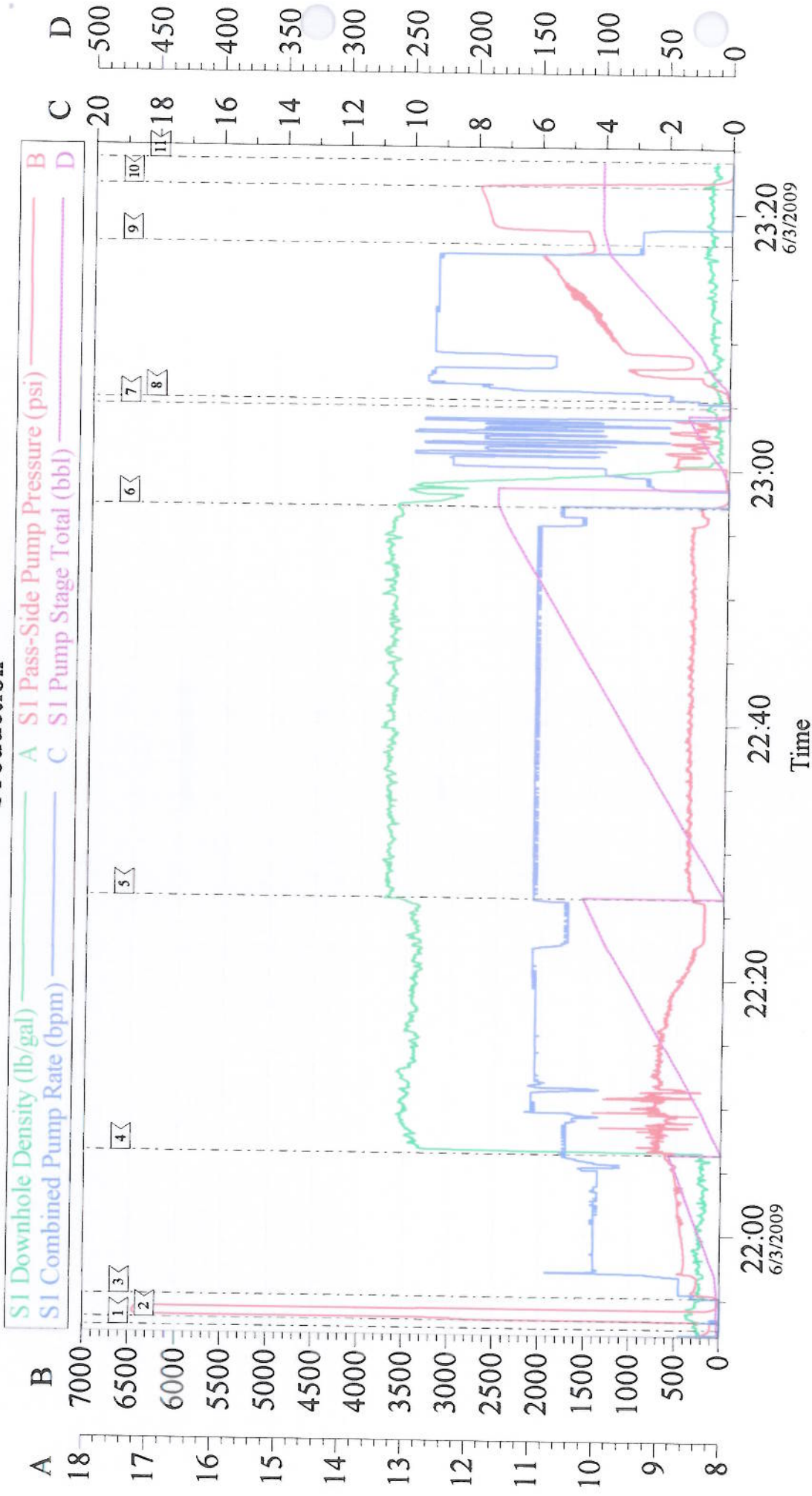
Sold To #: 338668	Ship To #: 2713341	Quote #:	Sales Order #: 6704321
Customer: CHEVRON - MID-CONTINENT EBIZ	Customer Rep: MEIER, DAN		
Well Name: SKR	Well #: 698-09-AV-03	API/UWI #: 05-045-17281	
Field: SKINNER RIDGE	City (SAP): PARACHUTE	County/Parish: Garfield	State: Colorado
Legal Description:			
Lat: N 39.551 deg. OR N 39 deg. 33 min. 3.496 secs.		Long: W 108.33 deg. OR W -109 deg. 40 min. 12.842 secs.	
Contractor: H&P 318	Rig/Platform Name/Num: H&P 318		
Job Purpose: Cement Production Casing			Ticket Amount:
Well Type: Development Well	Job Type: Cement Production Casing		
Sales Person: DUNNING, DUSTIN	Srv Supervisor: YOUNG, JEREMY	MBU ID Emp #:	

Activity Description	Date/Time	Cht #	Rate bbl/ min	Volume bbl		Pressure psig		Comments
				Stage	Total	Tubing	Casing	
Call Out	06/03/2009 14:30							TD 6710 FT, TP 6681 FT, SHOE 46 FT, MUD WT. 10.4 PPG, HOLE 7 7/8 IN, PREVIOUS CSG 8 5/8 IN 24 LB/FT SET AT 1015 FT, CSG 4 1/2 IN 11.6 LB/FT.
Pre-Convoy Safety Meeting	06/03/2009 16:00							WITH ALL HES PERSONNEL
Crew Leave Yard	06/03/2009 16:30							
Arrive At Loc	06/03/2009 18:00							
Assessment Of Location Safety Meeting	06/03/2009 18:15							WITH ALL HES PERSONNEL
Pre-Rig Up Safety Meeting	06/03/2009 20:00							WITH ALL HES PERSONNEL
Rig-Up Completed	06/03/2009 21:00							
Pre-Job Safety Meeting	06/03/2009 21:30							WITH ALL PERSONNEL ON LOCATION.
Start Job	06/03/2009 21:49							
Pressure Test	06/03/2009 21:52							TESTED LINES TO 5000 LBS.
Pump Spacer	06/03/2009 21:54		4	40			420.0	FRESH WATER WITH POLY E FLAKE AND DYE
Pump Lead Cement	06/03/2009 22:05		6	119			550.0	420 SKS AT 12.8 PPG, 1.6 FT3/SK, 7.31 GAL/SK
Pump Tail Cement	06/03/2009 22:25		6	170			400.0	650 SKS AT 13.2 PPG, 1.47 FT3/SK, 6.32 GAL/SK
Shutdown	06/03/2009 22:56							WASH PUMPS AND LINES TO PIT.

Cementing Job Log

Activity Description	Date/Time	Cht #	Rate bbl/min	Volume bbl		Pressure psig		Comments
				Stage	Total	Tubing	Casing	
Drop Top Plug	06/03/2009 23:05							PLUG LAUNCHED.
Pump Displacement	06/03/2009 23:06		10	102			1600. 0	FRESH WATER WITH 75 LBS KCL PER 10 BBLS.
Slow Rate	06/03/2009 23:15		3	90			1500. 0	
Bump Plug	06/03/2009 23:18		3	102			2600. 0	PLUG BUMPED. PRESSURE UP 1000 PSI OVER LANDING PRESSURE AS PER CHEVRON.
Check Floats	06/03/2009 23:21							FLOATS HOLDING
End Job	06/03/2009 23:22							
Pre-Rig Down Safety Meeting	06/03/2009 23:30							WITH ALL HES PERSONNEL
Rig-Down Completed	06/04/2009 00:45							
Pre-Convoy Safety Meeting	06/04/2009 00:50							WITH ALL HES PERSONNEL
Crew Leave Location	06/04/2009 01:00							HES HAD GOOD RETURNS THROUGHOUT ENTIRE CEMENT JOB. NO CEMENT RETURNED TO SURFACE. HES RETURNED 30 BBLS WATER SPACER TO SURFACE.
Comment	06/04/2009 01:01							THANK YOU FOR USING HALLIBURTON CEMENT. JEREMY YOUNG AND CREW. BP GAUGE READING 12 PSI ON WATER, 15 PSI ON LEAD, 15 PSI ON TAIL.

Chevron Production



Customer: Chevron	Job Date: 03-Jun-2009	Sales Order #: 6704321
Well Description: SKR 698-09-AV-03	Job Type: Production	ADC Used: Yes
Company Rep: Dan Meier	Cement Supervisor: Jeremy Young	Elite #: 3 / Paul Salazar