
CHEVRON - MID-CONTINENT EBIZ

**SKR 698-09-AV-03
SKINNER RIDGE
Garfield County , Colorado**

Cement Surface Casing

11-May-2009

Job Site Documents

The Road to Excellence Starts with Safety

Sold To #: 338668	Ship To #: 2713341	Quote #:	Sales Order #: 6663511
Customer: CHEVRON - MID-CONTINENT EBIZ	Customer Rep: DOHERTY, ED		
Well Name: SKR	Well #: 698-09-AV-03	API/UWI #: 05-045-17281	
Field: SKINNER RIDGE	City (SAP): PARACHUTE	County/Parish: Garfield	State: Colorado
Lat: N 39.551 deg. OR N 39 deg. 33 min. 3.496 secs.	Long: W 108.33 deg. OR W -109 deg. 40 min. 12.842 secs.		
Contractor: H&P 318	Rig/Platform Name/Num: H&P 318		
Job Purpose: Cement Surface Casing			
Well Type: Development Well	Job Type: Cement Surface Casing		
Sales Person: HARTLEY, RICHARD	Srv Supervisor: STILLSON, ERIC	MBU ID Emp #: 393789	

Job Personnel

HES Emp Name	Exp Hrs	Emp #	HES Emp Name	Exp Hrs	Emp #	HES Emp Name	Exp Hrs	Emp #
ANDERSON, ADAM S	12	456683	HUGHES, STEVEN Shane	12	300140	SMITH, CHRISTOPHER Scott	12	452619
STILLSON, ERIC W	12	393789						

Equipment

HES Unit #	Distance-1 way	HES Unit #	Distance-1 way	HES Unit #	Distance-1 way	HES Unit #	Distance-1 way
10829462	60 mile	10872429	60 mile	10893932	60 mile	10897909	60 mile

Job Hours

Date	On Location Hours	Operating Hours	Date	On Location Hours	Operating Hours	Date	On Location Hours	Operating Hours
05-11-09	7	1						
TOTAL								

Total is the sum of each column separately

Job

Formation Name	Formation Depth (MD)	Top	Bottom	Form Type	Job depth MD	Job Depth TVD	Water Depth	Perforation Depth (MD)	From	To
				BHST	1015. ft	1015. ft	4. ft			

Job Times

Called Out	Date	Time	Time Zone
On Location	11 - May - 2009	08:00	MST
Job Started	11 - May - 2009	12:30	MST
Job Completed	11 - May - 2009	17:41	MST
Departed Loc	11 - May - 2009	18:30	MST
	11 - May - 2009	20:00	MST

Well Data

Description	New / Used	Max pressure psig	Size in	ID in	Weight lbm/ft	Thread	Grade	Top MD ft	Bottom MD ft	Top TVD ft	Bottom TVD ft
12 1/4 Open Hole Section				12.25					1015.		
Surface Casing	Unknown		8.625	8.097	24.				1000.8		1000.8

Sales/Rental/3rd Party (HES)

Description	Qty	Qty uom	Depth	Supplier
PLUG, CMTG, TOP, 8 5/8, HWE, 7.20 MIN/8.09 MA	1	EA		
PORT. DAS W/CEMWIN; ACQUIRE W/HES, ZI	1	JOB		
ADC (AUTO DENSITY CTRL) SYS, /JOB, ZI	1	JOB		

Tools and Accessories

Type	Size	Qty	Make	Depth	Type	Size	Qty	Make	Depth	Type	Size	Qty	Make
Guide Shoe					Packer					Top Plug	8.625	1	
Float Shoe					Bridge Plug					Bottom Plug			
Float Collar					Retainer					SSR plug set			
Insert Float										Plug Container	8.625	1	
Stage Tool										Centralizers			

Miscellaneous Materials

Gelling Agt	Conc	Surfactant	Conc	Acid Type	Qty	Conc	%
Treatment Fld	Conc	Inhibitor	Conc	Sand Type	Size	Qty	

Fluid Data

Stage/Plug #: 1

Fluid #	Stage Type	Fluid Name	Qty	Qty uom	Mixing Density lbm/gal	Yield ft ³ /sk	Mix Fluid Gal/sk	Rate bbl/min	Total Mix Fluid Gal/sk
1	PolyFlake Dyed Spacer		30.00	bbl	8.4	.0	.0	4.0	
2	Lead Cement	VERSACEM (TM) SYSTEM (452010)	140.0	sacks	12.3	2.38	13.75	6.0	

13.75 Gal

FRESH WATER

3	Tail Cement	VERSACEM (TM) SYSTEM (452010)	150.0	sacks	12.8	2.11	11.75	6.0	
---	-------------	-------------------------------	-------	-------	------	------	-------	-----	--

11.75 Gal

FRESH WATER

4	Fresh Water Displacement		61.00	bbl	8.33	.0	.0	8.0	
---	--------------------------	--	-------	-----	------	----	----	-----	--

Calculated Values

Pressures

Volumes

Displacement	60.9	Shut In: Instant		Lost Returns	0	Cement Slurry	116	Pad	
Top Of Cement	SURFACE	5 Min		Cement Returns	30	Actual Displacement	60.9	Treatment	
Frac Gradient		15 Min		Spacers	30	Load and Breakdown		Total Job	

Rates

Circulating	RIG	Mixing	6	Displacement	8	Avg. Job	7
Cement Left In Pipe	Amount	44 ft	Reason	Shoe Joint			
Frac Ring # 1 @	ID	Frac ring # 2 @	ID	Frac Ring # 3 @	ID	Frac Ring # 4 @	ID

The Information Stated Herein Is Correct

Customer Representative Signature

The Road to Excellence Starts with Safety

Sold To #: 338668		Ship To #: 2713341		Quote #:		Sales Order #: 6663511	
Customer: CHEVRON - MID-CONTINENT EBIZ				Customer Rep: DOHERTY, ED			
Well Name: SKR			Well #: 698-09-AV-03		API/UWI #: 05-045-17281		
Field: SKINNER RIDGE		City (SAP): PARACHUTE		County/Parish: Garfield		State: Colorado	
Legal Description:							
Lat: N 39.551 deg. OR N 39 deg. 33 min. 3.496 secs.				Long: W 108.33 deg. OR W -109 deg. 40 min. 12.842 secs.			
Contractor: H&P 318			Rig/Platform Name/Num: H&P 318				
Job Purpose: Cement Surface Casing						Ticket Amount:	
Well Type: Development Well			Job Type: Cement Surface Casing				
Sales Person: HARTLEY, RICHARD			Srv Supervisor: STILLSON, ERIC			MBU ID Emp #: 393789	

Activity Description	Date/Time	Cht #	Rate bbl/min	Volume bbl		Pressure psig		Comments
				Stage	Total	Tubing	Casing	
Call Out	05/11/2009 08:00							CHEVRON 8 5/8 SURFACE, CEMENT PRE LOADED IN TIER 1 OF THE BIN ON LOCATION.
Pre-Convoy Safety Meeting	05/11/2009 11:00							ENTIRE CREW
Arrive At Loc	05/11/2009 12:30							ARRIVED EARLY, RIG RUNNING CASING
Assessment Of Location Safety Meeting	05/11/2009 12:35							ENTIRE CREW, SPOT EQUIPMENT AND USED TARP UNDER PUMP
Pre-Rig Up Safety Meeting	05/11/2009 12:55							ENTIRE CREW, WALKED THROUGH RIG UP LOOKING FOR HAZARDS.
Rig-Up Equipment	05/11/2009 13:00							1 PICK UP, 1 HT400 PUMP TRUCK, 1 CEMENT STORAGE BIN WITH ALL CEMENT IN TIER #1, 1 COMPACT HEAD WITH PLUG.
Pre-Job Safety Meeting	05/11/2009 17:00							ENTIRE CREW, CO REP, AND RIG CREW.
Start Job	05/11/2009 17:41							TD 1015 TP 1000.77 SJ 44 FC 956.77 MW 9.2 PPG, 8 5/8" 24# CSG IN 12 1/4" HOLE
Pump Water	05/11/2009 17:41		1	1			50.0	FILL LINES BEFORE TESTING.
Test Lines	05/11/2009 17:44		0.5	0.2			3300.0	PRESSURE HELD, NO LEAKS.

Cementing Job Log

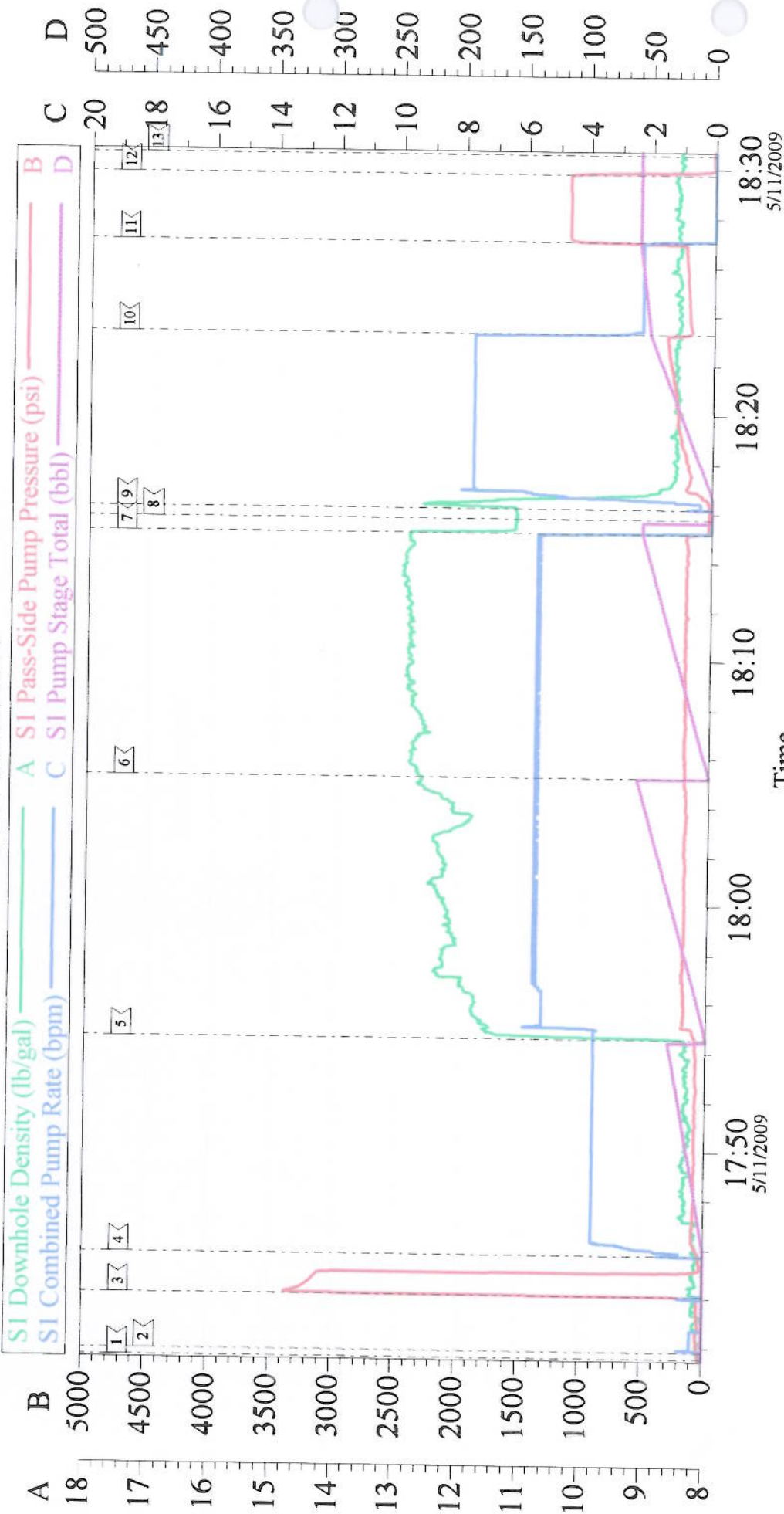
Activity Description	Date/Time	Cht #	Rate bbl/ min	Volume bbl		Pressure psig		Comments
				Stage	Total	Tubing	Casing	
Pump Spacer	05/11/2009 17:45		4	30			82.0	FRESH WATER WITH 1 BAG POLYFLAKE AND RED DYE., PUMPED AT 4 BPM, BROUGHT UP CEMENT TUB UP AND WEIGHED WITH SCALES.
Pump Lead Cement	05/11/2009 17:54		6	59.3			210.0	140 SKS VERSACEM, 12.3 PPG, 2.38 CUFT/SKS, 13.75 GAL/SK. SPED RATE TO 6 BPM WHEN SWAPPED TO LEAD CEMENT.
Pump Tail Cement	05/11/2009 18:05		6	56.4			201.0	150 SKS VERSACEM, 12.8 PPG, 2.11 CUFT/SK, 11.75 GAL/SK.
Shutdown	05/11/2009 18:15							6X5 GAUGE READ 10 PSI ON WATER AND 15 PSI ON CEMENT. 4X4 GAUGE READ 90 PSI.
Drop Top Plug	05/11/2009 18:15							VERIFIED PLUG LEFT.
Pump Displacement	05/11/2009 18:16		8	60.9			350.0	FRESH WATER, CEMENT TO SURFACE AT 31 BBLS GONE. 30 BBLS OF CEMENT TO SURFACE.
Slow Rate	05/11/2009 18:23		2	50			230.0	SLOW RATE TO LAND PLUG
Bump Plug	05/11/2009 18:27		2	60.9			1162.0	PLUG LANDED, BUMPED 1000 PSI OVER PER CO REP
Check Floats	05/11/2009 18:29							FLOATS HELD, WHEN RELEASED PRESSURE GOT .5 BBLS OF WATER BACK TO TRUCK.
End Job	05/11/2009 18:30							GOOD RETURNS THROUGHOUT JOB, DID NOT MOVE PIPE.
Post-Job Safety Meeting (Pre Rig-Down)	05/11/2009 18:35							ENTIRE CREW
Rig-Down Equipment	05/11/2009 19:00							BLEW DOWN TIER 1 ON BIN AND EMPTIED SOCKS.

Cementing Job Log

Activity Description	Date/Time	Cht #	Rate bbl/ min	Volume bbl		Pressure psig		Comments
				Stage	Total	Tubing	Casing	
Pre-Convoy Safety Meeting	05/11/2009 19:55							ENTIRE CREW.
Crew Leave Location	05/11/2009 20:00							THANK YOU FOR USING HALLIBURTON, ERIC STILLSON AND CREW.

CHEVRON

8 5/8 SURFACE



Local Event Log			
1 START JOB	17:41:34	2 FILL LINES	17:41:50
4 DYE/POLY SPACER	17:45:44	5 LEAD CEMENT	17:54:33
7 SHUTDOWN	18:15:11	8 DROP PLUG	18:15:45
10 SLOW RATE	18:23:18	11 BUMP PLUG	18:27:01
13 END JOB	18:30:32	12 CHECK FLOATS	18:29:45
3 TEST LINES	17:44:06	6 TAIL CEMENT	18:05:12
9 H2O DISPLACEMENT	18:16:09		

Customer: CHEVRON	Job Date: 11-May-2009	Sales Order #: 6663511
Well Description: SKR 698-09-AV-03	Job Type: SURFACE	ADC Used: YES
Company Rep: ED DOHERTY	Cement Supervisor: ERIC STILLSON	Elite #: 11/ CHRIS SMITH