

SURFACE LOCATION

NAD 83

LAT = 40.46454°N

LONG = 104.87446°W

P.D.O.P. = 1.9

GPS OPERATOR= C. VANMATRE

BOTTOM HOLE LOCATION

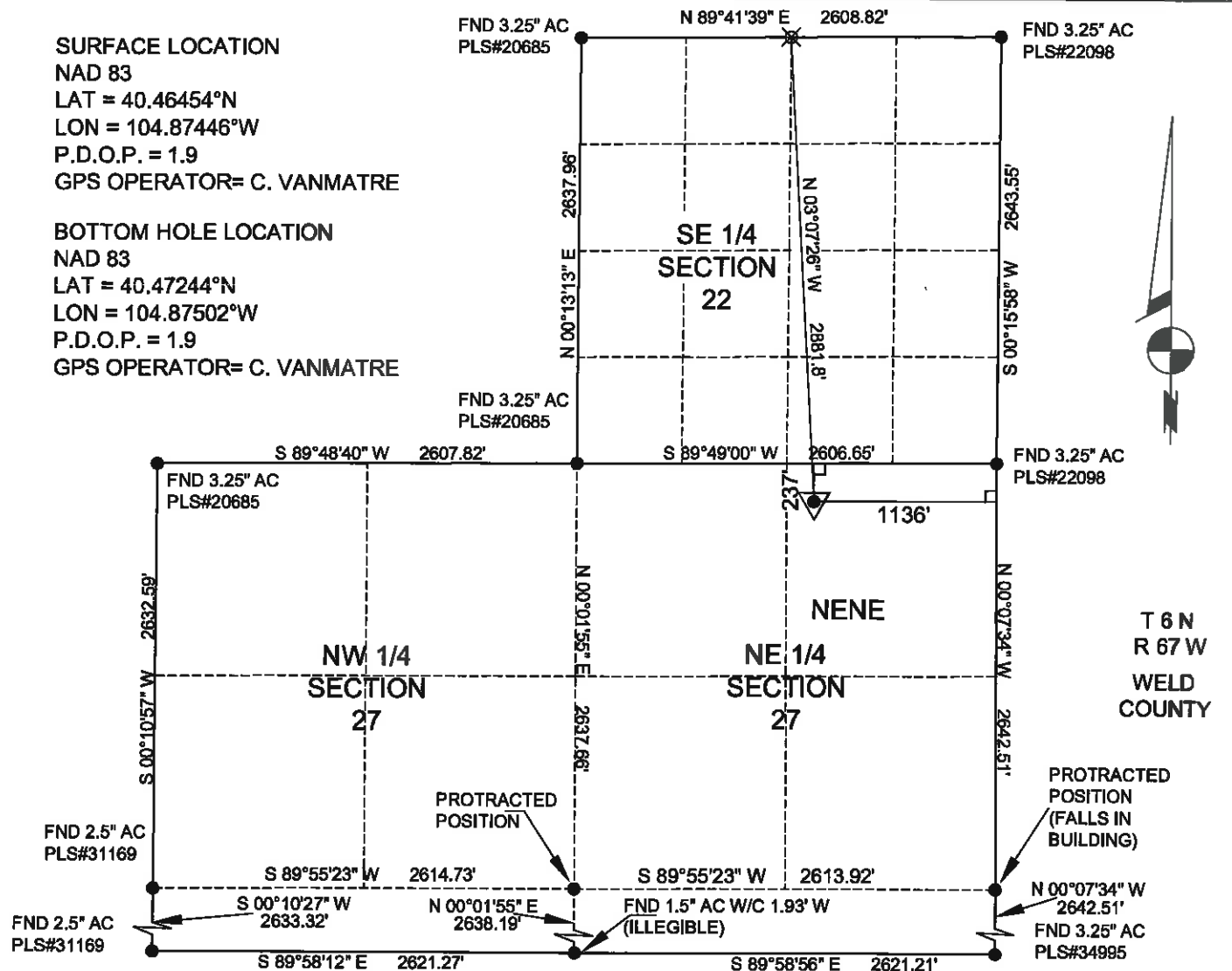
NAD 83

LAT = 40.47244°N

LONG = 104.87502°W

P.D.O.P. = 1.9

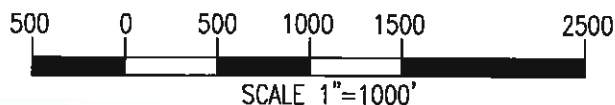
GPS OPERATOR= C. VANMATRE



WELL: DIAMOND VALLEY 22-32-12 TO BE LOCATED 237' FNL AND 1136' FEL IN SECTION 27, TOWNSHIP 6 NORTH, RANGE 67 WEST OF THE 6TH P.M. LOCATION FALLS IN: ALFALFA FIELD GROUND ELEVATION = 4767' IMPROVEMENTS: SEE SHEET 2 OF 2

LEGEND:

- SECTION CORNER (AS NOTED)
- △ PROPOSED WELL LOCATION
- ⊗ PROPOSED BOTTOM HOLE LOCATION



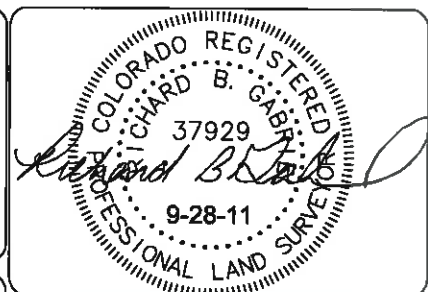
NOTES:

1. THIS SURVEY WAS DONE BY GPS METHODS AND CONFORMS TO THE MINIMUM STANDARDS AS SET BY THE C.O.G.C.C. RULE NO. 215.
2. ELEVATIONS SHOWN AT THE WELL HEAD, AS WELL AS HORIZONTAL CONTROL, ARE BASED ON GPS-RTK VALUES DERIVED FROM DOING 2-HOUR STATIC GPS SESSIONS AND REDUCTIONS USING O.P.U.S. SOLUTIONS.
3. THE BEARINGS AS SHOWN HEREON ARE BASED ON GPS OBSERVATIONS BETWEEN THE MONUMENTS SHOWN HEREON AS FOUND IN THE FIELD DATE BELOW.
4. DISTANCES SHOWN ARE AT GROUND LEVEL, AS MEASURED IN THE FIELD, WITH TIES TO WELLS MEASURED AT A PERPENDICULAR TO SECTION LINES.

I, RICHARD B. GABRIEL, A LICENSED PROFESSIONAL LAND SURVEYOR IN THE STATE OF COLORADO DO HEREBY CERTIFY TO:
GREAT WESTERN OIL AND GAS COMPANY THAT THE SURVEY AND WELL LOCATION CERTIFICATE SHOWN HEREON WAS DONE BY ME OR UNDER MY DIRECT SUPERVISION AND THAT THE DRAWING SHOWN HEREON ACCURATELY DEPICTS THE PROPOSED LOCATION OF THE WELL **DIAMOND VALLEY 22-32-12**.
 THIS CERTIFICATE DOES NOT REPRESENT A LAND SURVEY PLAT OR IMPROVEMENT SURVEY PLAT AS DEFINED BY C.R.S. 38-51-102 AND CANNOT BE RELIED UPON TO DETERMINE OWNERSHIP.

RICHARD B. GABRIEL P.L.S. #37929
 COLORADO LICENSED PROFESSIONAL LAND SURVEYOR
 FOR AND ON BEHALF OF POWER SURVEYING CO., INC.

NOTICE: ACCORDING TO COLORADO LAW YOU MUST COMMENCE ANY LEGAL ACTION BASED UPON ANY DEFECT IN THIS SURVEY WITHIN THREE YEARS AFTER YOU FIRST DISCOVER SUCH DEFECT. IN NO EVENT MAY ANY ACTION BASED ON ANY DEFECT IN THIS SURVEY BE COMMENCED MORE THAN TEN YEARS FROM THIS SAID DATE OF THIS CERTIFICATION SHOWN HEREON.



POWER™
 Surveying Company, Inc.
 Established 1988
 120 W. 84TH AVENUE
 THORNTON, COLORADO 80260
 PH. 303-702-1617
 FAX. 303-702-1488
 WWW.POWERSURVEYING.COM

DATE OF FIELD WORK: 9-23-11
 DATE OF COMPLETION: 9-27-11
 PROJECT NUMBER: 501-11-109

