

**CHEVRON - MID-CONTINENT EBIZ  
11111 S WILCREST DR - DO NOT MAIL  
HOUSTON, Texas**

SKR  
SKR 698-09-AV-02

**H&P 318/H&P/318**

## **Post Job Summary**

# **Cement Production Casing**

Prepared for:  
Date Prepared:  
Version: 1

Service Supervisor:

Submitted by:

**HALLIBURTON**

The Road to Excellence Starts with Safety

Sold To #: 338668	Ship To #: 2713340	Quote #:	Sales Order #: 6688601
Customer: CHEVRON - MID-CONTINENT EBIZ	Customer Rep: MOELLER, RONALD		
Well Name: SKR	Well #: 698-09-AV-02	API/UWI #: 05-045-17298	
Field: SKINNER RIDGE	City (SAP): PARACHUTE	County/Parish: Garfield	State: Colorado
Lat: N 39.551 deg. OR N 39 deg. 33 min. 3.391 secs.	Long: W 108.33 deg. OR W -109 deg. 40 min. 12.756 secs.		
Contractor: H&P 318	Rig/Platform Name/Num: H&P 318		
Job Purpose: Cement Production Casing			
Well Type: Development Well	Job Type: Cement Production Casing		
Sales Person: DUNNING, DUSTIN	Srv Supervisor:	MBU ID Emp #:	

### Job Personnel

HES Emp Name	Exp Hrs	Emp #	HES Emp Name	Exp Hrs	Emp #	HES Emp Name	Exp Hrs	Emp #
ANGLESTEIN, TROY	7	436099	CRONKHITE, KENT	7	336769	JAMISON, BILL	7	229155
MUHLESTEIN, RYAN	7	453609	SAUTER, MARK	7	410526	SMITH, DUSTIN	7	418015

### Equipment

HES Unit #	Distance-1 way	HES Unit #	Distance-1 way	HES Unit #	Distance-1 way	HES Unit #	Distance-1 way
10829466		10995025		10616651			

### Job Hours

Date	On Location Hours	Operating Hours	Date	On Location Hours	Operating Hours	Date	On Location Hours	Operating Hours
5/24/09	5	5/25/09	2					

TOTAL Total is the sum of each column separately

### Job

Formation Name	Formation Depth (MD)	Top	Bottom	Form Type	Job depth MD	Job Depth TVD	Water Depth	Wk Ht Above Floor	Perforation Depth (MD)	From	To
				BHST	6264. ft	6234. ft		4. ft			

### Job Times

Date	Time	Time Zone
24 - May - 2009	15:00	MST
24 - May - 2009	19:00	MST
24 - May - 2009	22:24	MST
25 - May - 2009	00:08	MST
25 - May - 2009	02:00	MST

### Well Data

Description	New / Used	Max pressure psig	Size in	ID in	Weight lbm/ft	Thread	Grade	Top MD ft	Bottom MD ft	Top TVD ft	Bottom TVD ft
7 7/8 Open Hole Section				7.875				897	6264		
4 1/2 Production Casing	Unknown		4.5	4.	11.6				6234		
8 5/8 Surface Casing	Unknown		8.625	8.097	24.				897		

### Sales/Rental/3<sup>rd</sup> Party (HES)

Description	Qty	Qty uom	Depth	Supplier
PLUG,CMTG,TOP,4 1/2,HWE,3.65 MIN/4.14 MA	1	EA		
PORT. DAS W/CEMWIN;ACQUIRE W/HES, ZI	1	JOB		
ADC (AUTO DENSITY CTRL) SYS, /JOB,ZI	1	JOB		

### Tools and Accessories

Type	Size	Qty	Make	Depth	Type	Size	Qty	Make	Depth	Type	Size	Qty	Make
Guide Shoe					Packer					Top Plug	4.5	1	
Float Shoe					Bridge Plug					Bottom Plug			
Float Collar					Retainer					SSR plug set			
Insert Float										Plug Container	4.5	1	
Stage Tool										Centralizers			

### Miscellaneous Materials

Gelling Agt	Conc	Surfactant	Conc	Acid Type	Qty	Conc	%
Treatment Fld	Conc	Inhibitor	Conc	Sand Type	Size	Qty	



Fluid Data									
Stage/Plug #: 1									
Fluid #	Stage Type	Fluid Name	Qty	Qty uom	Mixing Density lbm/gal	Yield ft <sup>3</sup> /sk	Mix Fluid Gal/sk	Rate bbl/min	Total Mix Fluid Gal/sk
1	Dyed Polyflake Spacer		40	bbl	8.33	.0	.0	4	
2	Lead Cement	VARICEM (TM) CEMENT (452009)	320	sacks	12.8	1.6	7.31	6	
3	Tail Cement	VARICEM (TM) CEMENT (452009)	650	sacks	13.2	1.47	6.32	6	
4	KCL DISPLACEMENT		96	bbl	8.4	.0	.0	8	

Calculated Values		Pressures		Volumes			
Displacement	96	Shut In: Instant		Lost Returns		Cement Slurry	275
Top Of Cement	surface	5 Min		Cement Returns	0	Actual Displacement	95
Frac Gradient		15 Min		Spacers	4	Load and Breakdown	
						Total Job	410

Rates							
Circulating		Mixing		Displacement		Avg. Job	
Cement Left In Pipe	Amount	44.86 ft	Reason	Shoe Joint			
Frac Ring # 1 @	ID	Frac ring # 2 @	ID	Frac Ring # 3 @	ID	Frac Ring # 4 @	ID

The Information Stated Herein Is Correct	Customer Representative Signature

*The Road to Excellence Starts with Safety*

Sold To #: 338668	Ship To #: 2713340	Quote #:	Sales Order #: 6688601
Customer: CHEVRON - MID-CONTINENT EBIZ	Customer Rep: MOELLER, RONALD		
Well Name: SKR	Well #: 698-09-AV-02	API/UWI #: 05-045-17298	
Field: SKINNER RIDGE	City (SAP): PARACHUTE	County/Parish: Garfield	State: Colorado
Legal Description:			
Lat: N 39.551 deg. OR N 39 deg. 33 min. 3.391 secs.		Long: W 108.33 deg. OR W -109 deg. 40 min. 12.756 secs.	
Contractor: H&P 318	Rig/Platform Name/Num: H&P 318		
Job Purpose: Cement Production Casing	Ticket Amount:		
Well Type: Development Well	Job Type: Cement Production Casing		
Sales Person: DUNNING, DUSTIN	Srvc Supervisor:	MBU ID Emp #:	

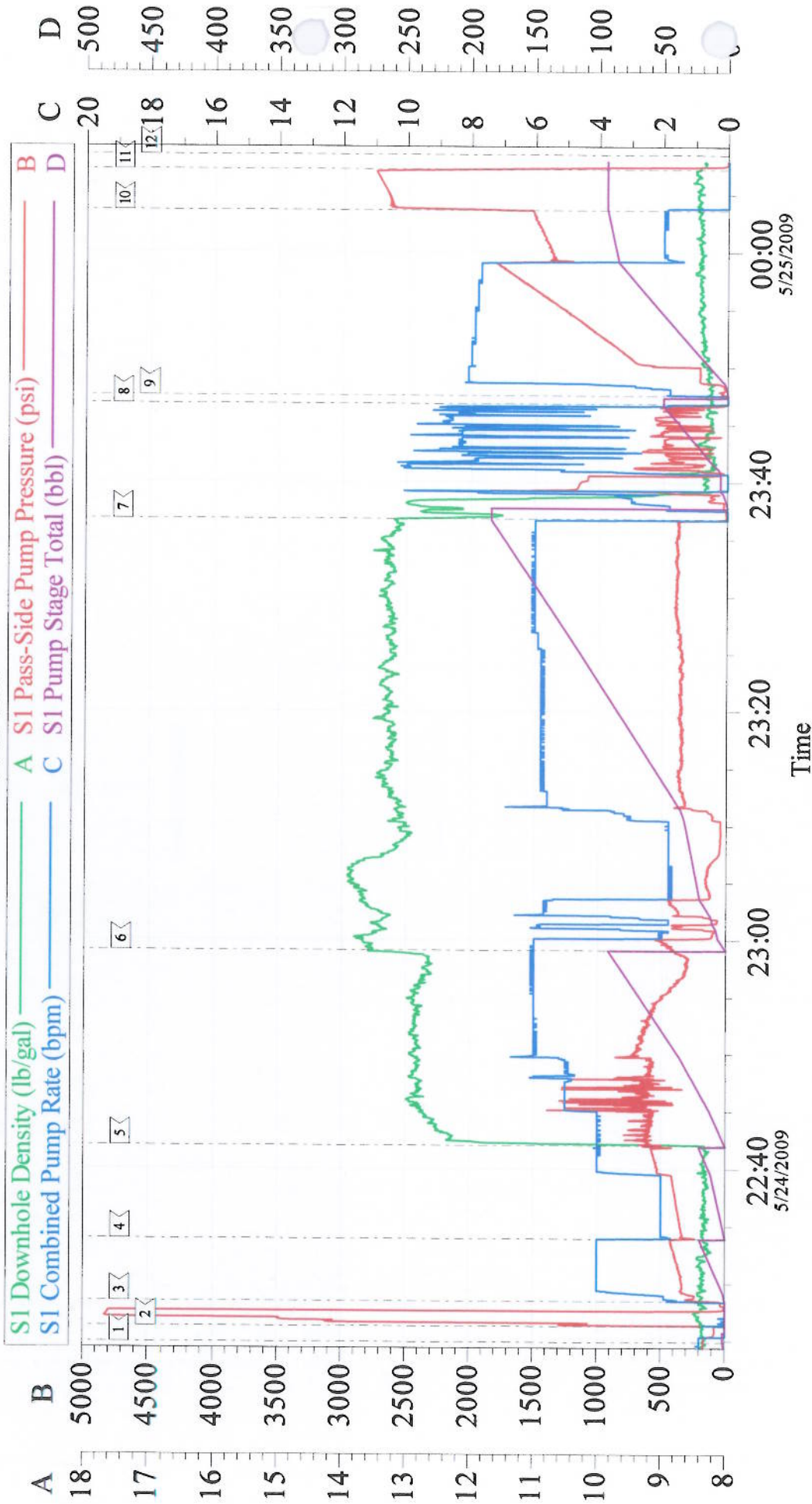
Activity Description	Date/Time	Cht #	Rate bbl/min	Volume bbl		Pressure psig		Comments
				Stage	Total	Tubing	Casing	
Call Out	05/24/2009 15:00							ELITE 4
Depart Yard Safety Meeting	05/24/2009 17:20							
Crew Leave Yard	05/24/2009 17:30							
Arrive At Loc	05/24/2009 19:00							
Assessment Of Location Safety Meeting	05/24/2009 19:05							
Pre-Rig Up Safety Meeting	05/24/2009 19:10							
Rig-Up Equipment	05/24/2009 19:15							
Pre-Job Safety Meeting	05/24/2009 22:10							
Rig-Up Completed	05/24/2009 22:24							
Start Job	05/24/2009 22:24							TD 6264, TP 6234, SJ 44.86, HOLE 7 7/8
Test Lines	05/24/2009 22:26					4800.0		
Pump Spacer	05/24/2009 22:28		4	40	40		530.0	20 BBLS H2O, LAST 20 DYE AND POLY FLAKE
Pump Lead Cement	05/24/2009 22:42		6	91	91		630.0	320 SKS, 12.8 PPG, 1.6 YIELD, 7.31 GAL/SK
Pump Tail Cement	05/24/2009 22:59		6	170	184		360.0	650 SKS, 13.2 PPG, 1.47 YIELD, 6.32 GAL/SK
Clean Lines	05/24/2009 23:36							
Drop Plug	05/24/2009 23:46							
Pump Displacement	05/24/2009 23:47		8	96			1570.0	KCL



## Cementing Job Log

Activity Description	Date/Time	Cht #	Rate bbl/min	Volume bbl		Pressure psig		Comments
				Stage	Total	Tubing	Casing	
Slow Rate	05/25/2009 00:00		2	86	86		1500.0	
Bump Plug	05/25/2009 00:03		2	96	95		2600.0	
Check Floats	05/25/2009 00:07							floats held, 1bbl back
End Job	05/25/2009 00:08							good circulation through out job, rig did not move pipe during job
Pre-Rig Down Safety Meeting	05/25/2009 00:10							
Rig-Down Equipment	05/25/2009 00:15							

# Chevron Production



Customer: Chevron	Job Date: 24-May-2009	Sales Order #: 6688601
Well Description: SKR 698-09-AV-02	Job Type: Production	ADC Used: Yes
Company Rep: Elmer Tatum	Cement Supervisor: Kent Cronkhite	Elite #: 4