

**CHEVRON - MID-CONTINENT EBIZ  
11111 S WILCREST DR - DO NOT MAIL  
HOUSTON, Texas**

SKR  
SKR 698-09-AV-01

**H&P 318/H&P/318**

## **Post Job Summary**

# **Cement Surface Casing**

Prepared for:  
Date Prepared:  
Version: 1

*Service Supervisor: FEUERBORN, JOHN*

Submitted by:

**HALLIBURTON**

### The Road to Excellence Starts with Safety

Sold To #: 338668	Ship To #: 2713339	Quote #:	Sales Order #: 6667192
Customer: CHEVRON - MID-CONTINENT EBIZ		Customer Rep: MEIER, DAN	
Well Name: SKR		Well #: 698-09-AV-01	API/UWI #: 05-045-17297
Field: SKINNER RIDGE	City (SAP): PARACHUTE	County/Parish: Garfield	State: Colorado
Lat: N 39.551 deg. OR N 39 deg. 33 min. 3.427 secs.		Long: W 108.33 deg. OR W -109 deg. 40 min. 12.875 secs.	
Contractor: H&P 318		Rig/Platform Name/Num: H&P 318	
Job Purpose: Cement Surface Casing			
Well Type: Development Well		Job Type: Cement Surface Casing	
Sales Person: DUNNING, DUSTIN		Srv Supervisor: FEUERBORN, JOHN	MBU ID Emp #: 381677

#### Job Personnel

HES Emp Name	Exp Hrs	Emp #	HES Emp Name	Exp Hrs	Emp #	HES Emp Name	Exp Hrs	Emp #
FEUERBORN, JOHN William	4	381677	HUGHES, STEVEN Shane	4	300140	SMITH, CHRISTOPHER Scott	4	452619
WHITE, EDWARD W	4	424173						

#### Equipment

HES Unit #	Distance-1 way	HES Unit #	Distance-1 way	HES Unit #	Distance-1 way	HES Unit #	Distance-1 way
10872429	60 mile	10893932	60 mile	10897909	60 mile	10951251	60 mile

#### Job Hours

Date	On Location Hours	Operating Hours	Date	On Location Hours	Operating Hours	Date	On Location Hours	Operating Hours
5-14-09	4	1						
TOTAL			Total is the sum of each column separately					

#### Job

Formation Name	Formation Depth (MD) Top	Bottom	Form Type	Job Depth TVD	Water Depth	Perforation Depth (MD) From	To
			BHST	1010. ft			
				1010. ft	4. ft		

#### Job Times

Date	Time	Time Zone
14 - May - 2009	23:17	CST
14 - May - 2009	23:56	CST

#### Well Data

Description	New / Used	Max pressure psig	Size in	ID in	Weight lbm/ft	Thread	Grade	Top MD ft	Bottom MD ft	Top TVD ft	Bottom TVD ft
-------------	------------	-------------------	---------	-------	---------------	--------	-------	-----------	--------------	------------	---------------

#### Sales/Rental/3<sup>rd</sup> Party (HES)

Description	Qty	Qty uom	Depth	Supplier
PLUG,CMTG,TOP,8 5/8,HWE,7.20 MIN/8.09 MA	1	EA		

#### Tools and Accessories

Type	Size	Qty	Make	Depth	Type	Size	Qty	Make	Depth	Type	Size	Qty	Make
Guide Shoe					Packer					Top Plug			
Float Shoe					Bridge Plug					Bottom Plug			
Float Collar					Retainer					SSR plug set			
Insert Float										Plug Container			
Stage Tool										Centralizers			

#### Miscellaneous Materials

Gelling Agt	Conc	Surfactant	Conc	Acid Type	Qty	Conc	%
Treatment Fld	Conc	Inhibitor	Conc	Sand Type	Size		

#### Fluid Data

Stage/Plug #: 1									
Fluid #	Stage Type	Fluid Name	Qty	Qty uom	Mixing Density lbm/gal	Yield ft3/sk	Mix Fluid Gal/sk	Rate bbl/min	Total Mix Fluid Gal/sk



Stage/Plug #: 1									
Fluid #	Stage Type	Fluid Name	Qty	Qty uom	Mixing Density lbm/gal	Yield ft <sup>3</sup> /sk	Mix Fluid Gal/sk	Rate bbl/min	Total Mix Fluid Gal/sk
1	DYE SPACER AND POLYFLAKE		30	bbl	.	.0	.0	.0	
2	Lead Cement	VERSACEM (TM) SYSTEM (452010)	120	sacks	12.3	2.38	13.75		
	2 %	CAL-SEAL 60, 50 LB BAG (101217146)							
	2 %	ECONOLITE (100001580)							
	0.3 %	VERSASET, 55 LB SK (101376573)							
	5.64 lbm	SALT, 100 LB BAG (100003652)							
	0.125 lbm	POLY-E-FLAKE (101216940)							
	0.25 %	D-AIR 3000 (101007446)							
	13.75 Gal	FRESH WATER							
3	Tail Cement	VERSACEM (TM) SYSTEM (452010)	150	sacks	12.8	2.11	11.75		
	2 %	CAL-SEAL 60, 50 LB BAG (101217146)							
	2 %	ECONOLITE (100001580)							
	0.3 %	VERSASET, 55 LB SK (101376573)							
	5.64 lbm	SALT, 100 LB BAG (100003652)							
	11.75 Gal	FRESH WATER							
4	DISPLACEMENT		60.8	bbl	.	.0	.0	.0	
Calculated Values		Pressures		Volumes					
Displacement	60.8	Shut In: Instant		Lost Returns		Cement Slurry		Pad	
Top Of Cement	0	5 Min		Cement Returns	20	Actual Displacement		Treatment	
Frac Gradient		15 Min		Spacers	30	Load and Breakdown		Total Job	
Rates									
Circulating		Mixing	6	Displacement	8	Avg. Job		7	
Cement Left In Pipe	Amount	0 ft	Reason	Shoe Joint					
Frac Ring # 1 @	ID	Frac ring # 2 @	ID	Frac Ring # 3 @	ID	Frac Ring # 4 @	ID	ID	
The Information Stated Herein Is Correct				Customer Representative Signature					

*The Road to Excellence Starts with Safety*

Sold To #: 338668	Ship To #: 2713339	Quote #:	Sales Order #: 6667192
Customer: CHEVRON - MID-CONTINENT EBIZ	Customer Rep: MEIER, DAN		
Well Name: SKR	Well #: 698-09-AV-01	API/UWI #: 05-045-17297	
Field: SKINNER RIDGE	City (SAP): PARACHUTE	County/Parish: Garfield	State: Colorado
Legal Description:			
Lat: N 39.551 deg. OR N 39 deg. 33 min. 3.427 secs.		Long: W 108.33 deg. OR W -109 deg. 40 min. 12.875 secs.	
Contractor: H&P 318	Rig/Platform Name/Num: H&P 318		
Job Purpose: Cement Surface Casing	Ticket Amount:		
Well Type: Development Well	Job Type: Cement Surface Casing		
Sales Person: DUNNING, DUSTIN	Srv Supervisor: FEUERBORN, JOHN	MBU ID Emp #: 381677	

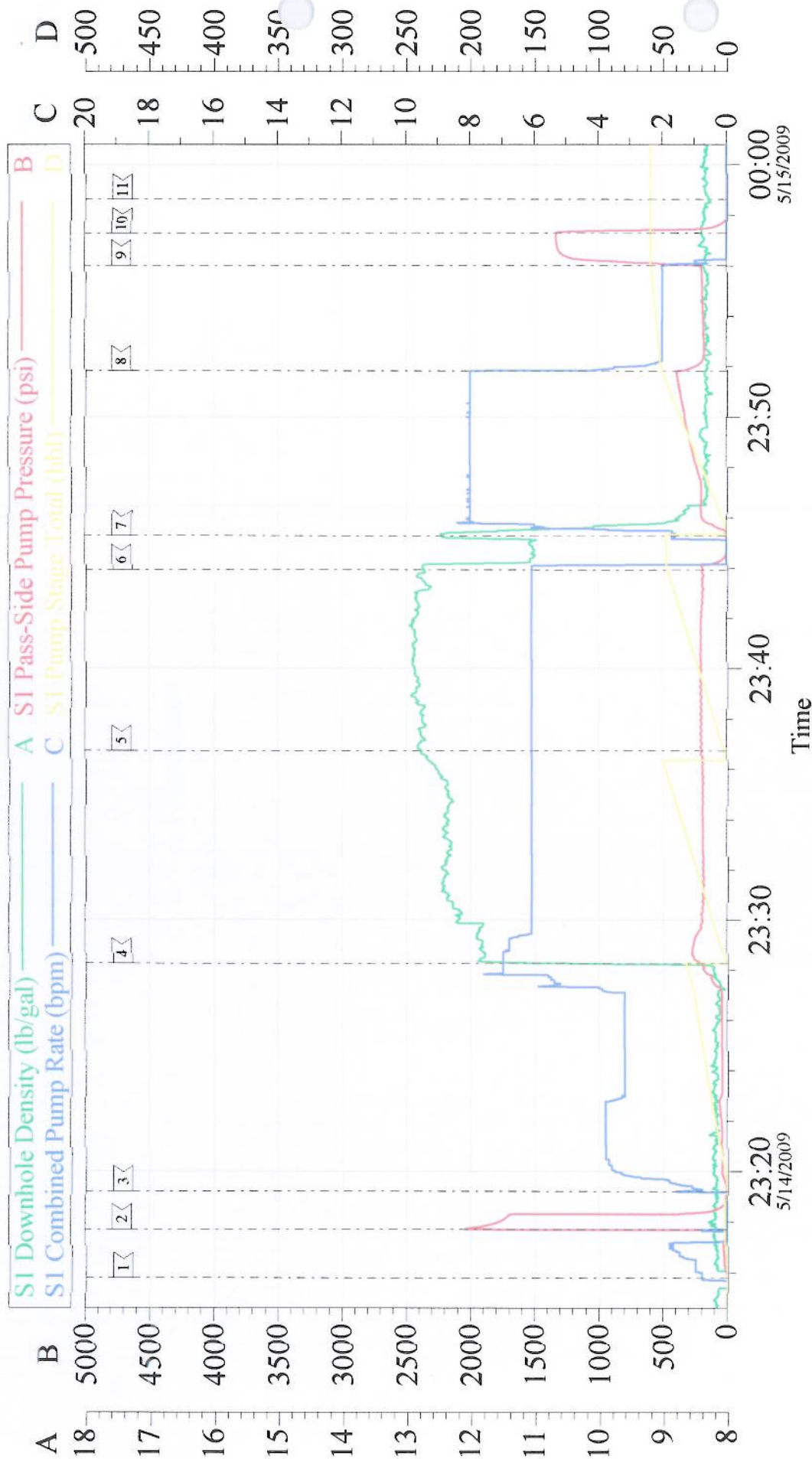
Activity Description	Date/Time	Cht #	Rate bbl/min	Volume bbl		Pressure psig		Comments
				Stage	Total	Tubing	Casing	
Arrive At Loc	05/14/2009 17:00							
Safety Meeting - Assessment of Location	05/14/2009 17:15							
Other	05/14/2009 17:20							SPOT EQUIPMENT
Pre-Rig Up Safety Meeting	05/14/2009 17:25							
Rig-Up Equipment	05/14/2009 17:30							
Other	05/14/2009 22:40							RIG CIRCULATING ON BOTTOM
Pre-Job Safety Meeting	05/14/2009 22:50							
Start Job	05/14/2009 23:15							8.625 SURFACE CASING TP999' SJ43' 12.25" HOLE TD 1010'
Test Lines	05/14/2009 23:17							2000psi ON TRUCK AND LINES
Pump Spacer 1	05/14/2009 23:19		6	30			166.0	H2O RED DYE AND PLOYE FLAKE
Pump Lead Cement	05/14/2009 23:30		6	50.6			250.0	120skts PUMPED AT 12.3ppg 2.38y 13.75wr BP 18psi TOP OF LEAD 0'
Pump Tail Cement	05/14/2009 23:37		6	56.3			201.0	150skts PUMPED AT 12.8ppg 2.11y 11.75wr BP 21psi TO OF TAIL 270'
Drop Top Plug	05/14/2009 23:45							PLUG AWAY
Pump Displacement	05/14/2009 23:46		8				391.0	H2O
Other	05/14/2009 23:52		2	50			190.0	SLOW RATE



## Cementing Job Log

Activity Description	Date/Time	Cht #	Rate bbl/ min	Volume bbl		Pressure psig		Comments
				Stage	Total	Tubing	Casing	
Bump Plug	05/14/2009 23:56		2	60.8			1320. 0	
Check Floats	05/14/2009 23:58							HOLDING
End Job	05/14/2009 23:59							GOOD RETURNS PIPE LEFT STATIC 20bbls TO SURFACE
Post-Job Safety Meeting (Pre Rig-Down)	05/15/2009 00:05							
Safety Meeting - Departing Location	05/15/2009 01:30							
Crew Leave Location	05/15/2009 01:45							

# CHEVRON SUSRFACE



Customer: CHEVRON Well Description: SKR 698-09-AV-01 Company Rep: JOHNNATHAN LINDLEY	Job Date: 14-May-2009	Sales Order #: 667192
	Job Type: SURFACE	ADC Used: YES
	Cement Supervisor: JOHN FEUERBORN	Elite #: 11 ED WHITE