

ANADARKO E&P COMPANY LP

Location: COLORADO Slot: SLOT#02 GOBBLER 1C-23HZ (240°FSL & 1130°FEL,SEC.23)
Field: WELD COUNTY (KERR MCGEE) Well: GOBBLER 1C-23HZ
Facility: SEC.23-T2N-R66W Wellbore: GOBBLER 1C-23HZ pwb

Plot reference wellpath is GOBBLER 1C-23HZ (REV-B.0) PWP

True vertical depths are referenced to XTREME 8 (RKB)

Measured depths are referenced to XTREME 8 (RKB)

XTREME 8 (RKB) to Mean Sea Level: 5103 feet

Mean Sea Level to Mud line (At Slot: SLOT#02 GOBBLER 1C-23HZ (240°FSL & 1130°FEL,SEC.23)): 0 feet

Coordinates are in feet referenced to Slot

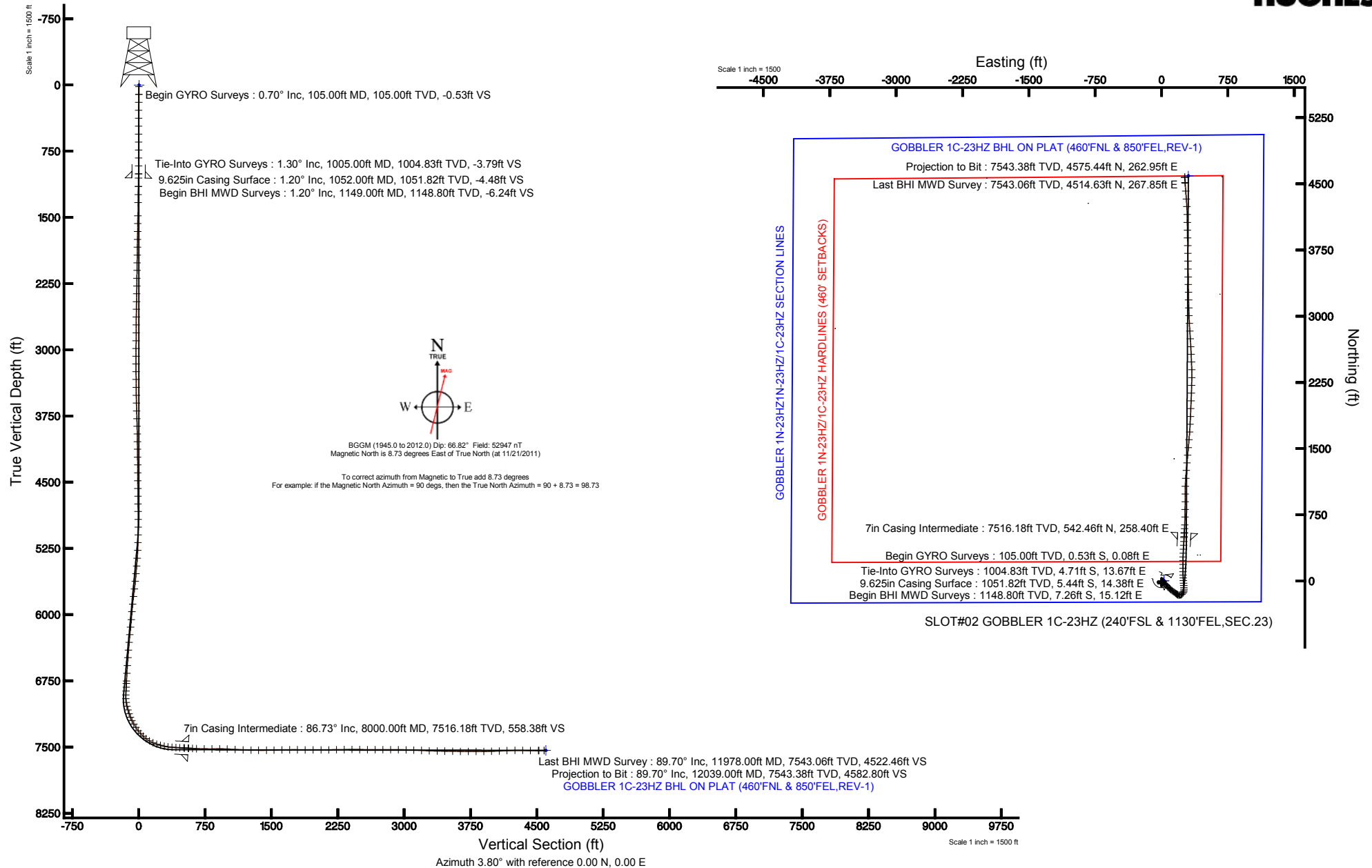
Grid System: NAD83 / Lambert Colorado SP, Northern Zone (501), US feet

North Reference: True north

Scale: True distance

Depths are in feet

Created by: wilsjef02 on 1/31/2012





Actual Wellpath Report

GOBBLER 1C-23HZ AWP

Page 1 of 5



REFERENCE WELLPATH IDENTIFICATION

Operator	ANADARKO E&P COMPANY LP	Slot	SLOT#02 GOBBLER 1C-23HZ (240'FSL & 1130'FEL,SEC.23)
Area	COLORADO	Well	GOBBLER 1C-23HZ
Field	WELD COUNTY (KERR MCGEE)	Wellbore	GOBBLER 1C-23HZ AWB
Facility	SEC.23-T2N-R66W		

REPORT SETUP INFORMATION

Projection System	NAD83 / Lambert Colorado SP, Northern Zone (501), US feet	Software System	WellArchitect® 3.0.2
North Reference	True	User	Wilsjef02
Scale	0.99996	Report Generated	1/31/2012 at 3:13:45 PM
Convergence at slot	0.49° East	Database/Source file	WA_ANADARKO/GOBBLER_1C-23HZ_AWB.xml

WELLPATH LOCATION

	Local coordinates		Grid coordinates		Geographic coordinates	
	North[ft]	East[ft]	Easting[US ft]	Northing[US ft]	Latitude	Longitude
Slot Location	-0.10	-30.14	3212824.15	1286435.00	40°07'01.740"N	104°44'20.450"W
Facility Reference Pt			3212854.29	1286435.36	40°07'01.741"N	104°44'20.062"W
Field Reference Pt			3197771.84	1268891.29	40°04'09.600"N	104°47'36.000"W

WELLPATH DATUM

Calculation method	Minimum curvature	XTREME 8 (RKB) to Facility Vertical Datum	5103.00ft
Horizontal Reference Pt	Slot	XTREME 8 (RKB) to Mean Sea Level	5103.00ft
Vertical Reference Pt	XTREME 8 (RKB)	XTREME 8 (RKB) to Mud Line at Slot (SLOT#02 GOBBLER 1C-23HZ (240'FSL & 1130'FEL,SEC.23))	5103.00ft
MD Reference Pt	XTREME 8 (RKB)	Section Origin	N 0.00, E 0.00 ft
Field Vertical Reference	Mean Sea Level	Section Azimuth	3.80°



Actual Wellpath Report

GOBBLER 1C-23HZ AWP

Page 2 of 5



REFERENCE WELLPATH IDENTIFICATION			
Operator	ANADARKO E&P COMPANY LP	Slot	SLOT#02 GOBBLER 1C-23HZ (240'FSL & 1130'FEL,SEC.23)
Area	COLORADO	Well	GOBBLER 1C-23HZ
Field	WELD COUNTY (KERR MCGEE)	Wellbore	GOBBLER 1C-23HZ AWB
Facility	SEC.23-T2N-R66W		

WELLPATH DATA (143 stations)

MD [ft]	Inclination [°]	Azimuth [°]	TVD [ft]	Vert Sect [ft]	North [ft]	East [ft]	Latitude	Longitude	DLS [°/100ft]	Comments
1005.00	1.300	130.200	1004.83	-3.79	-4.71	13.67	40°07'01.693"N	104°44'20.274"W	0.47	Tie-Into GYRO Surveys
1149.00	1.200	172.300	1148.80	-6.24	-7.26	15.12	40°07'01.668"N	104°44'20.255"W	0.63	Begin BHI MWD Surveys
1241.00	0.800	176.900	1240.79	-7.82	-8.85	15.29	40°07'01.653"N	104°44'20.253"W	0.44	
1332.00	0.900	188.100	1331.78	-9.17	-10.20	15.22	40°07'01.639"N	104°44'20.254"W	0.21	
1482.00	0.900	186.500	1481.76	-11.52	-12.53	14.92	40°07'01.616"N	104°44'20.258"W	0.02	
1569.00	0.800	189.200	1568.75	-12.80	-13.81	14.75	40°07'01.604"N	104°44'20.260"W	0.12	
1658.00	1.000	190.200	1657.74	-14.19	-15.19	14.51	40°07'01.590"N	104°44'20.263"W	0.23	
1748.00	0.900	196.000	1747.73	-15.67	-16.64	14.18	40°07'01.576"N	104°44'20.268"W	0.15	
1836.00	0.800	202.400	1835.72	-16.92	-17.87	13.75	40°07'01.563"N	104°44'20.273"W	0.16	
1926.00	1.000	201.200	1925.70	-18.27	-19.19	13.23	40°07'01.550"N	104°44'20.280"W	0.22	
2014.00	1.000	208.600	2013.69	-19.70	-20.58	12.58	40°07'01.537"N	104°44'20.288"W	0.15	
2100.00	1.000	212.000	2099.68	-21.04	-21.87	11.83	40°07'01.524"N	104°44'20.298"W	0.07	
2189.00	1.000	216.500	2188.66	-22.38	-23.15	10.95	40°07'01.511"N	104°44'20.309"W	0.09	
2277.00	1.200	223.100	2276.65	-23.74	-24.44	9.87	40°07'01.498"N	104°44'20.323"W	0.27	
2365.00	1.200	225.600	2364.63	-25.14	-25.76	8.58	40°07'01.485"N	104°44'20.340"W	0.06	
2454.00	1.100	225.800	2453.61	-26.47	-27.01	7.30	40°07'01.473"N	104°44'20.356"W	0.11	
2539.00	1.400	227.700	2538.59	-27.82	-28.28	5.95	40°07'01.461"N	104°44'20.373"W	0.36	
2627.00	1.500	230.000	2626.56	-29.39	-29.74	4.27	40°07'01.446"N	104°44'20.395"W	0.13	
2717.00	0.900	232.800	2716.54	-30.67	-30.93	2.80	40°07'01.434"N	104°44'20.414"W	0.67	
2807.00	0.600	267.500	2806.54	-31.19	-31.37	1.77	40°07'01.430"N	104°44'20.427"W	0.59	
2897.00	0.700	231.700	2896.53	-31.61	-31.74	0.87	40°07'01.426"N	104°44'20.439"W	0.46	
2985.00	0.100	281.500	2984.53	-31.96	-32.05	0.37	40°07'01.423"N	104°44'20.445"W	0.73	
3073.00	0.200	289.100	3072.53	-31.91	-31.99	0.15	40°07'01.424"N	104°44'20.448"W	0.12	
3161.00	0.300	251.700	3160.53	-31.95	-32.01	-0.21	40°07'01.424"N	104°44'20.453"W	0.21	
3248.00	0.600	281.800	3247.52	-31.98	-31.99	-0.88	40°07'01.424"N	104°44'20.461"W	0.43	
3336.00	0.900	297.000	3335.52	-31.64	-31.58	-1.94	40°07'01.428"N	104°44'20.475"W	0.41	
3425.00	1.200	311.600	3424.50	-30.79	-30.64	-3.26	40°07'01.437"N	104°44'20.492"W	0.45	
3515.00	1.600	315.900	3514.47	-29.37	-29.12	-4.84	40°07'01.452"N	104°44'20.512"W	0.46	
3604.00	1.900	327.600	3603.43	-27.35	-26.98	-6.50	40°07'01.473"N	104°44'20.534"W	0.52	
3693.00	1.900	323.200	3692.38	-25.04	-24.55	-8.17	40°07'01.497"N	104°44'20.555"W	0.16	
3781.00	2.400	324.300	3780.32	-22.51	-21.89	-10.12	40°07'01.524"N	104°44'20.580"W	0.57	
3867.00	1.500	332.600	3866.27	-20.16	-19.42	-11.69	40°07'01.548"N	104°44'20.600"W	1.09	
3954.00	1.100	28.100	3953.25	-18.42	-17.68	-11.82	40°07'01.565"N	104°44'20.602"W	1.45	
4042.00	1.100	47.000	4041.24	-17.04	-16.36	-10.80	40°07'01.578"N	104°44'20.589"W	0.41	
4128.00	0.900	37.600	4127.22	-15.87	-15.26	-9.79	40°07'01.589"N	104°44'20.576"W	0.30	
4216.00	0.800	27.900	4215.21	-14.74	-14.17	-9.08	40°07'01.600"N	104°44'20.567"W	0.20	
4304.00	0.700	31.000	4303.21	-13.70	-13.16	-8.52	40°07'01.610"N	104°44'20.560"W	0.12	
4394.00	0.500	31.400	4393.20	-12.86	-12.36	-8.03	40°07'01.618"N	104°44'20.553"W	0.22	
4484.00	0.400	18.900	4483.20	-12.21	-11.72	-7.72	40°07'01.624"N	104°44'20.549"W	0.16	
4573.00	0.500	6.500	4572.19	-11.52	-11.04	-7.58	40°07'01.631"N	104°44'20.548"W	0.16	
4659.00	0.500	3.700	4658.19	-10.77	-10.30	-7.51	40°07'01.638"N	104°44'20.547"W	0.03	
4747.00	0.700	339.600	4746.19	-9.90	-9.41	-7.67	40°07'01.647"N	104°44'20.549"W	0.36	
4834.00	0.600	25.900	4833.18	-8.99	-8.50	-7.66	40°07'01.656"N	104°44'20.549"W	0.60	
4923.00	0.900	84.300	4922.18	-8.44	-8.01	-6.76	40°07'01.661"N	104°44'20.537"W	0.87	
5011.00	1.300	95.100	5010.16	-8.35	-8.03	-5.08	40°07'01.661"N	104°44'20.515"W	0.51	
5098.00	2.500	107.800	5097.11	-8.83	-8.70	-2.29	40°07'01.654"N	104°44'20.479"W	1.45	
5186.00	3.800	115.200	5184.98	-10.36	-10.53	2.18	40°07'01.636"N	104°44'20.422"W	1.54	
5275.00	5.600	121.700	5273.67	-13.47	-14.07	8.54	40°07'01.601"N	104°44'20.340"W	2.11	
5365.00	8.300	127.700	5363.00	-19.15	-20.35	17.42	40°07'01.539"N	104°44'20.226"W	3.10	
5453.00	9.200	125.000	5449.98	-26.34	-28.27	28.21	40°07'01.461"N	104°44'20.087"W	1.12	
5541.00	9.400	124.700	5536.82	-33.67	-36.39	39.88	40°07'01.380"N	104°44'19.937"W	0.23	
5629.00	9.100	129.200	5623.68	-41.40	-44.88	51.18	40°07'01.296"N	104°44'19.791"W	0.89	
5716.00	9.100	139.400	5709.59	-50.30	-54.46	60.99	40°07'01.202"N	104°44'19.665"W	1.85	
5804.00	9.900	140.400	5796.38	-60.77	-65.57	70.34	40°07'01.092"N	104°44'19.545"W	0.93	
5892.00	8.500	139.200	5883.25	-70.89	-76.32	79.41	40°07'00.986"N	104°44'19.428"W	1.61	
5978.00	7.600	131.500	5968.40	-78.90	-84.90	87.83	40°07'00.901"N	104°44'19.320"W	1.63	
6068.00	8.200	130.100	6057.55	-86.34	-92.98	97.19	40°07'00.821"N	104°44'19.199"W	0.70	
6155.00	9.300	129.400	6143.54	-94.10	-101.44	107.37	40°07'00.738"N	104°44'19.068"W	1.27	
6242.00	10.100	126.600	6229.29	-102.33	-110.45	118.93	40°07'00.649"N	104°44'18.919"W	1.07	
6330.00	9.200	125.700	6316.04	-110.23	-119.16	130.83	40°07'00.562"N	104°44'18.766"W	1.04	



Actual Wellpath Report

GOBBLER 1C-23HZ AWP

Page 3 of 5



REFERENCE WELLPATH IDENTIFICATION			
Operator	ANADARKO E&P COMPANY LP	Slot	SLOT#02 GOBBLER 1C-23HZ (240'FSL & 1130'FEL,SEC.23)
Area	COLORADO	Well	GOBBLER 1C-23HZ
Field	WELD COUNTY (KERR MCGEE)	Wellbore	GOBBLER 1C-23HZ AWB
Facility	SEC.23-T2N-R66W		

WELLPATH DATA (143 stations) † = interpolated/extrapolated station										
MD [ft]	Inclination [°]	Azimuth [°]	TVD [ft]	Vert Sect [ft]	North [ft]	East [ft]	Latitude	Longitude	DLS [°/100ft]	Comments
6418.00	8.300	126.000	6403.02	-117.33	-126.99	141.69	40°07'00.485"N	104°44'18.626"W	1.02	
6506.00	8.500	125.100	6490.08	-124.09	-134.47	152.15	40°07'00.411"N	104°44'18.492"W	0.27	
6595.00	6.900	126.100	6578.27	-130.37	-141.40	161.85	40°07'00.343"N	104°44'18.367"W	1.80	
6683.00	6.100	128.700	6665.70	-135.87	-147.44	169.77	40°07'00.283"N	104°44'18.265"W	0.97	
6771.00	5.200	125.500	6753.28	-140.64	-152.68	176.66	40°07'00.231"N	104°44'18.176"W	1.08	
6800.00	4.700	126.200	6782.17	-141.97	-154.14	178.69	40°07'00.217"N	104°44'18.150"W	1.74	
6843.00	5.800	116.400	6824.99	-143.75	-156.15	182.06	40°07'00.197"N	104°44'18.107"W	3.29	
6886.00	10.200	114.200	6867.56	-145.91	-158.68	187.48	40°07'00.172"N	104°44'18.037"W	10.26	
6931.00	13.500	97.700	6911.61	-147.66	-161.01	196.33	40°07'00.149"N	104°44'17.923"W	10.44	
6976.00	16.500	84.800	6955.08	-147.01	-161.14	207.90	40°07'00.148"N	104°44'17.774"W	9.94	
7020.00	18.000	66.700	6997.13	-142.94	-157.88	220.38	40°07'00.180"N	104°44'17.613"W	12.61	
7065.00	19.300	53.000	7039.79	-134.91	-150.65	232.71	40°07'00.251"N	104°44'17.455"W	10.13	
7109.00	20.200	36.300	7081.23	-123.74	-140.14	243.02	40°07'00.355"N	104°44'17.322"W	12.94	
7154.00	20.300	20.700	7123.48	-109.71	-126.57	250.39	40°07'00.489"N	104°44'17.227"W	11.97	
7197.00	21.700	5.800	7163.65	-94.61	-111.67	253.83	40°07'00.636"N	104°44'17.183"W	12.80	
7240.00	25.500	2.000	7203.05	-77.41	-94.51	254.96	40°07'00.806"N	104°44'17.168"W	9.51	
7285.00	29.300	354.900	7243.01	-56.84	-73.85	254.31	40°07'01.010"N	104°44'17.177"W	11.12	
7329.00	33.300	355.200	7280.60	-34.25	-51.08	252.35	40°07'01.235"N	104°44'17.202"W	9.10	
7373.00	38.000	354.800	7316.34	-8.91	-25.54	250.11	40°07'01.488"N	104°44'17.231"W	10.69	
7417.00	42.200	355.900	7349.99	19.11	2.70	247.82	40°07'01.767"N	104°44'17.260"W	9.68	
7460.00	47.800	357.300	7380.38	49.27	33.04	246.04	40°07'02.067"N	104°44'17.283"W	13.22	
7504.00	53.300	358.700	7408.33	83.06	66.99	244.87	40°07'02.402"N	104°44'17.298"W	12.74	
7549.00	59.500	359.500	7433.22	120.40	104.44	244.29	40°07'02.772"N	104°44'17.306"W	13.86	
7594.00	65.400	358.800	7454.03	160.14	144.32	243.69	40°07'03.166"N	104°44'17.313"W	13.18	
7639.00	71.900	0.100	7470.40	201.91	186.20	243.30	40°07'03.580"N	104°44'17.318"W	14.69	
7683.00	74.700	0.600	7483.04	243.98	228.34	243.56	40°07'03.997"N	104°44'17.315"W	6.46	
7727.00	77.500	1.400	7493.61	286.63	271.04	244.31	40°07'04.418"N	104°44'17.305"W	6.60	
7770.00	82.400	2.900	7501.12	328.94	313.34	245.90	40°07'04.836"N	104°44'17.285"W	11.90	
7815.00	85.900	3.100	7505.70	373.70	358.04	248.24	40°07'05.278"N	104°44'17.255"W	7.79	
7860.00	86.600	3.300	7508.64	418.60	402.87	250.75	40°07'05.721"N	104°44'17.222"W	1.62	
7904.00	87.000	2.800	7511.10	462.52	446.74	253.08	40°07'06.155"N	104°44'17.192"W	1.45	
7949.00	87.100	3.300	7513.42	507.46	491.62	255.48	40°07'06.598"N	104°44'17.162"W	1.13	
7958.00	87.000	3.500	7513.88	516.45	500.59	256.01	40°07'06.687"N	104°44'17.155"W	2.48	
8000.00†	86.726	3.043	7516.18	558.38	542.46	258.40	40°07'07.101"N	104°44'17.124"W	1.27	7" Casing Point
8004.00	86.700	3.000	7516.41	562.38	546.45	258.61	40°07'07.140"N	104°44'17.121"W	1.27	
8049.00	87.200	3.000	7518.80	607.31	591.32	260.96	40°07'07.583"N	104°44'17.091"W	1.11	
8093.00	87.200	2.900	7520.95	651.25	635.21	263.23	40°07'08.017"N	104°44'17.062"W	0.23	
8181.00	89.500	0.400	7523.48	739.14	723.12	265.76	40°07'08.886"N	104°44'17.029"W	3.86	
8267.00	90.100	1.700	7523.79	825.04	809.11	267.33	40°07'09.736"N	104°44'17.009"W	1.66	
8355.00	90.400	0.200	7523.40	912.93	897.09	268.79	40°07'10.605"N	104°44'16.990"W	1.74	
8442.00	87.800	359.100	7524.77	999.68	984.07	268.26	40°07'11.465"N	104°44'16.997"W	3.24	
8531.00	86.000	3.000	7529.58	1088.42	1072.90	269.89	40°07'12.343"N	104°44'16.976"W	4.82	
8621.00	87.400	3.600	7534.76	1178.27	1162.60	275.06	40°07'13.229"N	104°44'16.909"W	1.69	
8711.00	89.100	4.900	7537.51	1268.22	1252.31	281.73	40°07'14.115"N	104°44'16.824"W	2.38	
8797.00	89.300	4.400	7538.71	1354.20	1338.02	288.70	40°07'14.962"N	104°44'16.734"W	0.63	
8885.00	90.800	5.400	7538.64	1442.18	1425.69	296.21	40°07'15.829"N	104°44'16.637"W	2.05	
8971.00	91.100	5.300	7537.21	1528.14	1511.30	304.23	40°07'16.675"N	104°44'16.534"W	0.37	
9061.00	91.100	4.700	7535.48	1618.10	1600.94	312.07	40°07'17.561"N	104°44'16.433"W	0.67	
9149.00	90.800	4.400	7534.02	1706.08	1688.66	319.05	40°07'18.427"N	104°44'16.343"W	0.48	
9235.00	89.300	2.400	7533.95	1792.07	1774.50	324.15	40°07'19.276"N	104°44'16.277"W	2.91	
9324.00	89.600	2.600	7534.80	1881.04	1863.41	328.03	40°07'20.154"N	104°44'16.227"W	0.41	
9413.00	89.600	2.700	7535.42	1970.02	1952.31	332.15	40°07'21.033"N	104°44'16.174"W	0.11	
9503.00	90.200	2.100	7535.58	2060.00	2042.23	335.92	40°07'21.922"N	104°44'16.126"W	0.94	
9590.00	91.100	2.600	7534.59	2146.96	2129.15	339.49	40°07'22.780"N	104°44'16.080"W	1.18	
9678.00	91.000	0.800	7532.98	2234.89	2217.09	342.10	40°07'23.650"N	104°44'16.046"W	2.05	
9766.00	91.100	0.900	7531.37	2322.75	2305.07	343.40	40°07'24.519"N	104°44'16.029"W	0.16	
9854.00	90.100	358.800	7530.45	2410.53	2393.06	343.17	40°07'25.388"N	104°44'16.032"W	2.64	
9942.00	89.100	357.100	7531.06	2498.07	2481.00	340.02	40°07'26.257"N	104°44'16.073"W	2.24	
10030.00	89.800	357.400	7531.91	2585.49	2568.89	335.80	40°07'27.126"N	104°44'16.127"W	0.87	
10116.00	89.200	357.100	7532.66	2670.93	2654.79	331.67	40°07'27.975"N	104°44'16.180"W	0.78	



Actual Wellpath Report

GOBBLER 1C-23HZ AWP

Page 4 of 5



REFERENCE WELLPATH IDENTIFICATION

Operator	ANADARKO E&P COMPANY LP	Slot	SLOT#02 GOBBLER 1C-23HZ (240'FSL & 1130'FEL,SEC.23)
Area	COLORADO	Well	GOBBLER 1C-23HZ
Field	WELD COUNTY (KERR MCGEE)	Wellbore	GOBBLER 1C-23HZ AWB
Facility	SEC.23-T2N-R66W		

WELLPATH DATA (143 stations)

MD [ft]	Inclination [°]	Azimuth [°]	TVD [ft]	Vert Sect [ft]	North [ft]	East [ft]	Latitude	Longitude	DLS [°/100ft]	Comments
10206.00	90.300	356.000	7533.05	2760.20	2744.62	326.26	40°07'28.863"N	104°44'16.250"W	1.73	
10294.00	90.000	357.000	7532.82	2847.49	2832.45	320.89	40°07'29.731"N	104°44'16.319"W	1.19	
10382.00	89.700	356.700	7533.05	2934.84	2920.32	316.05	40°07'30.599"N	104°44'16.381"W	0.48	
10469.00	88.800	358.300	7534.19	3021.31	3007.23	312.26	40°07'31.458"N	104°44'16.430"W	2.11	
10557.00	87.600	358.600	7536.95	3108.88	3095.15	309.88	40°07'32.327"N	104°44'16.461"W	1.41	
10646.00	87.100	358.100	7541.07	3197.38	3184.02	307.32	40°07'33.205"N	104°44'16.494"W	0.79	
10734.00	87.900	359.500	7544.91	3284.96	3271.91	305.48	40°07'34.073"N	104°44'16.517"W	1.83	
10822.00	89.000	359.200	7547.29	3372.66	3359.87	304.48	40°07'34.943"N	104°44'16.530"W	1.30	
10908.00	88.700	358.500	7549.01	3458.32	3445.84	302.75	40°07'35.792"N	104°44'16.553"W	0.89	
10998.00	89.500	359.400	7550.43	3547.99	3535.81	301.10	40°07'36.681"N	104°44'16.574"W	1.34	
11087.00	88.700	359.300	7551.82	3636.71	3624.79	300.09	40°07'37.561"N	104°44'16.587"W	0.91	
11176.00	89.600	359.800	7553.14	3725.45	3713.78	299.40	40°07'38.440"N	104°44'16.596"W	1.16	
11263.00	90.000	358.000	7553.45	3812.13	3800.76	297.73	40°07'39.299"N	104°44'16.617"W	2.12	
11351.00	90.300	358.300	7553.22	3899.70	3888.71	294.89	40°07'40.169"N	104°44'16.654"W	0.48	
11439.00	92.700	359.900	7550.91	3987.37	3976.66	293.50	40°07'41.038"N	104°44'16.672"W	3.28	
11527.00	92.600	358.800	7546.84	4075.01	4064.56	292.51	40°07'41.906"N	104°44'16.684"W	1.25	
11616.00	91.800	358.800	7543.43	4163.60	4153.47	290.64	40°07'42.785"N	104°44'16.708"W	0.90	
11706.00	91.400	357.300	7540.91	4253.11	4243.38	287.58	40°07'43.674"N	104°44'16.748"W	1.72	
11793.00	88.700	355.100	7540.84	4339.34	4330.18	281.82	40°07'44.531"N	104°44'16.822"W	4.00	
11883.00	89.400	356.000	7542.33	4428.39	4419.89	274.83	40°07'45.418"N	104°44'16.912"W	1.27	
11972.00	89.700	355.600	7543.03	4516.52	4508.65	268.32	40°07'46.295"N	104°44'16.996"W	0.56	
11978.00	89.700	355.400	7543.06	4522.46	4514.63	267.85	40°07'46.354"N	104°44'17.002"W	3.33	Last BHI MWD Survey
12039.00	89.700	355.400	7543.38	4582.80	4575.44	262.95	40°07'46.955"N	104°44'17.065"W	0.00	Projection to Bit

HOLE & CASING SECTIONS - Ref Wellbore: GOBBLER 1C-23HZ AWB Ref Wellpath: GOBBLER 1C-23HZ AWP

String/Diameter	Start MD [ft]	End MD [ft]	Interval [ft]	Start TVD [ft]	End TVD [ft]	Start N/S [ft]	Start E/W [ft]	End N/S [ft]	End E/W [ft]
13.5in Open Hole	17.00	1052.00	1035.00	17.00	1051.82	0.00	0.00	-5.44	14.38
9.625in Casing Surface	17.00	1052.00	1035.00	17.00	1051.82	0.00	0.00	-5.44	14.38
8.75in Open Hole	1052.00	8010.00	6958.00	1051.82	7516.75	-5.44	14.38	552.43	258.93
7in Casing Intermediate	17.00	8000.00	7983.00	17.00	7516.18	0.00	0.00	542.46	258.40
6.125in Open Hole	8000.00	12039.00	4039.00	7516.18	7543.38	542.46	258.40	4575.44	262.95

TARGETS

Name	MD [ft]	TVD [ft]	North [ft]	East [ft]	Grid East [US ft]	Grid North [US ft]	Latitude	Longitude	Shape
GOBBLER 1N-23HZ/1N-23HZ/1C-23HZ SECTION LINES		0.00	0.00	30.14	3212854.29	1286435.25	40°07'01.740"N	104°44'20.062"W	polygon
GOBBLER 1N-23HZ/1C-23HZ HARDLINES (460' SETBACKS)		7236.00	0.00	30.14	3212854.29	1286435.25	40°07'01.740"N	104°44'20.062"W	polygon
GOBBLER 1C-23HZ BHL ON PLAT (460'FNL & 850'FEL,REV-1)		7540.00	4591.23	304.80	3213089.53	1291028.47	40°07'47.111"N	104°44'16.526"W	point

WELLPATH COMPOSITION - Ref Wellbore: GOBBLER 1C-23HZ AWB Ref Wellpath: GOBBLER 1C-23HZ AWP

Start MD [ft]	End MD [ft]	Positional Uncertainty Model	Log Name/Comment	Wellbore
17.00	1005.00	Gyrodata standard - Continuous gyro	GYRO SURVEYS <105-1005>	GOBBLER 1C-23HZ AWB
1005.00	8004.00	NaviTrak (Standard)	BHI MWD SURVEYS 8 3/4" HOLE <1149-8004>	GOBBLER 1C-23HZ AWB
8004.00	11978.00	NaviTrak (Standard)	BHI MWD SURVEYS 6 1/8" HOLE <8049-11978>	GOBBLER 1C-23HZ AWB
11978.00	12039.00	Blind Drilling (std)	Projection to bit	GOBBLER 1C-23HZ AWB



Actual Wellpath Report

GOBBLER 1C-23HZ AWP

Page 5 of 5



REFERENCE WELLPATH IDENTIFICATION

Operator	ANADARKO E&P COMPANY LP	Slot	SLOT#02 GOBBLER 1C-23HZ (240'FSL & 1130'FEL,SEC.23)
Area	COLORADO	Well	GOBBLER 1C-23HZ
Field	WELD COUNTY (KERR MCGEE)	Wellbore	GOBBLER 1C-23HZ AWB
Facility	SEC.23-T2N-R66W		

WELLPATH COMMENTS

MD [ft]	Inclination [°]	Azimuth [°]	TVD [ft]	Comment
105.00	0.700	171.400	105.00	Begin GYRO Surveys
1005.00	1.300	130.200	1004.83	Tie-Into GYRO Surveys
1149.00	1.200	172.300	1148.80	Begin BHI MWD Surveys
8000.00	86.726	3.043	7516.18	7" Casing Point
11978.00	89.700	355.400	7543.06	Last BHI MWD Survey
12039.00	89.700	355.400	7543.38	Projection to Bit