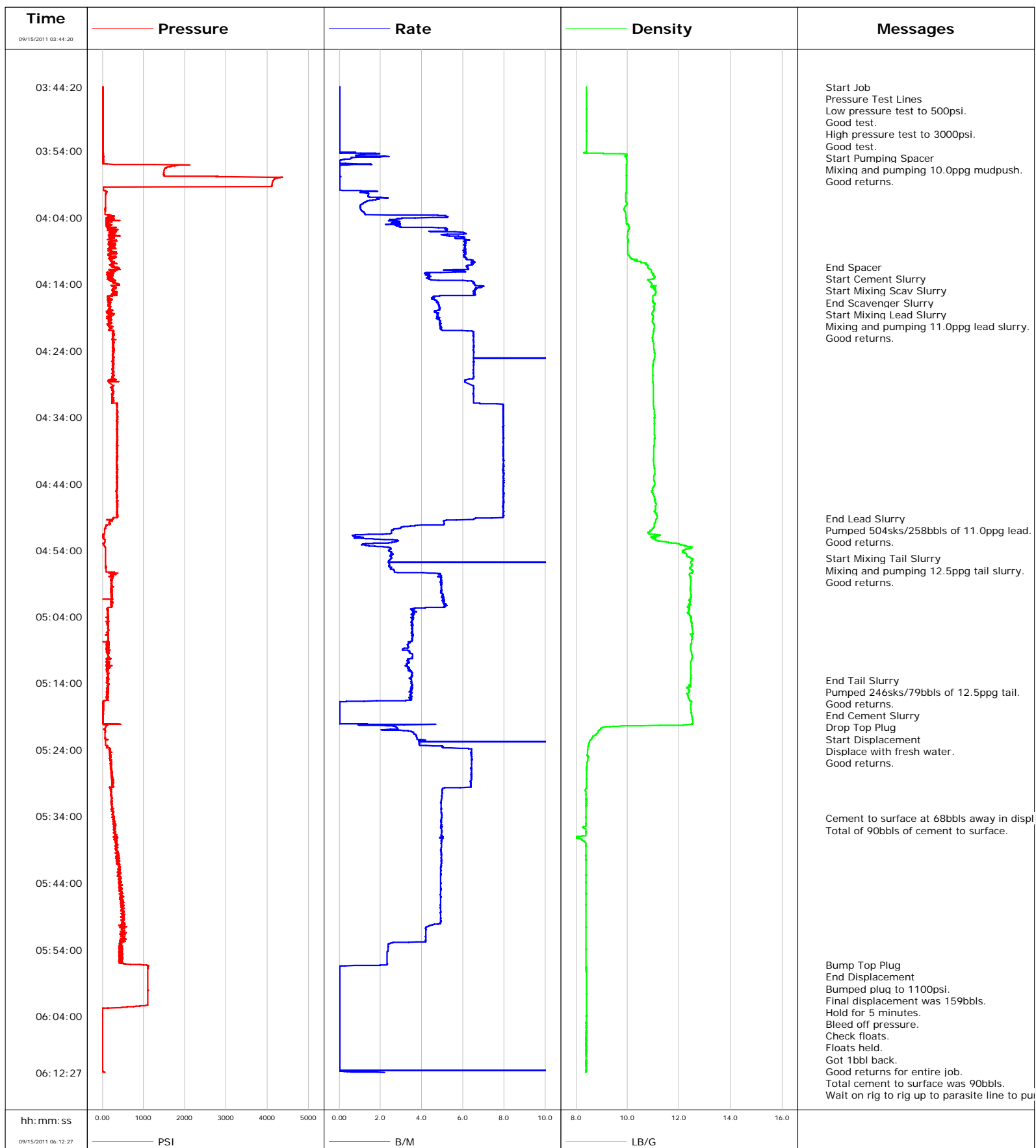


Well SGU 8501E-21 N22 496
Field STORY GULCH
Engineer Jeff Patterson
Country United States

Client ENCANA
SIR No. BQMF-00155
Job Type 9 5/8" SURFACE
Job Date 09-15-2011



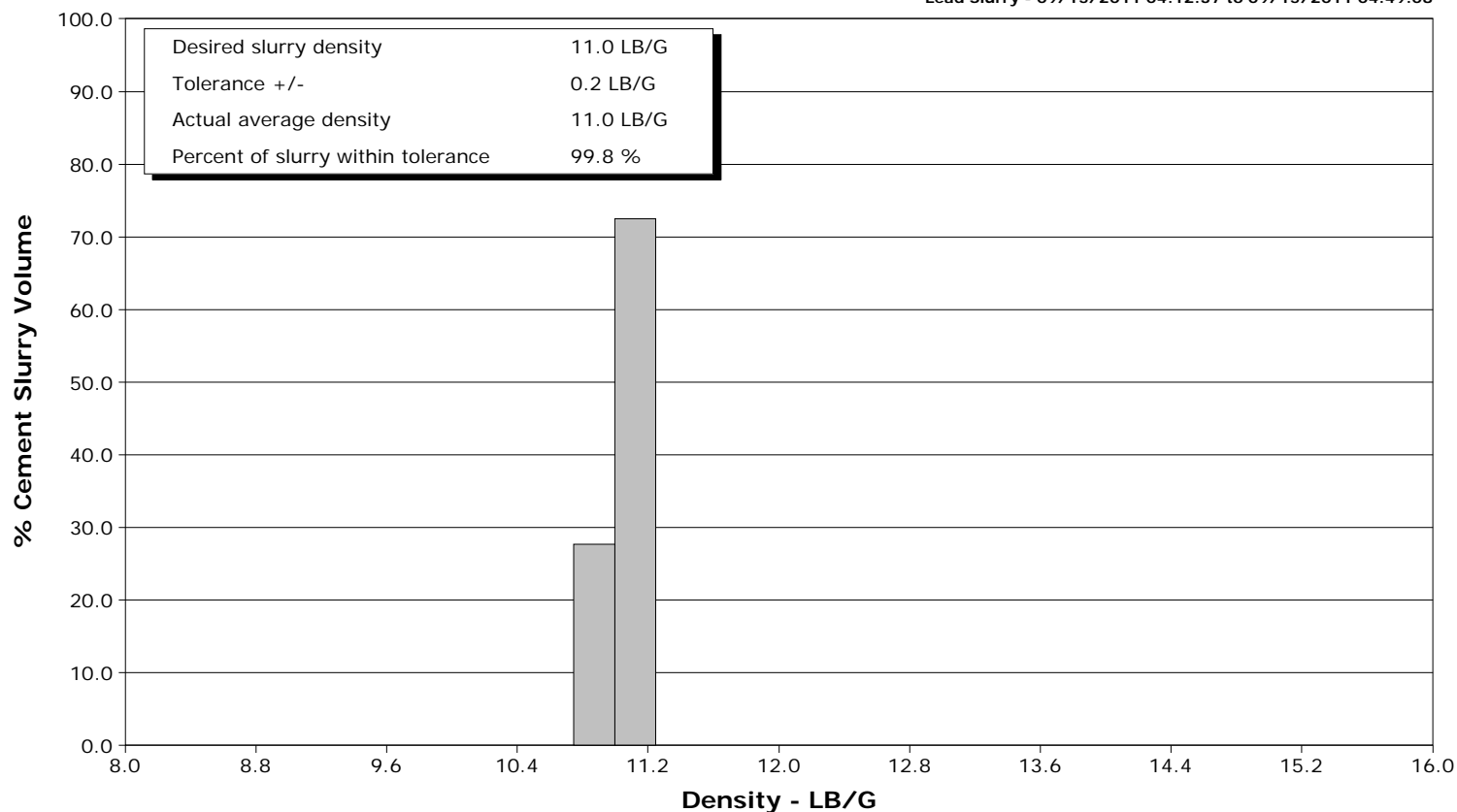
Schlumberger

Cementing Qa/Qc Density Report

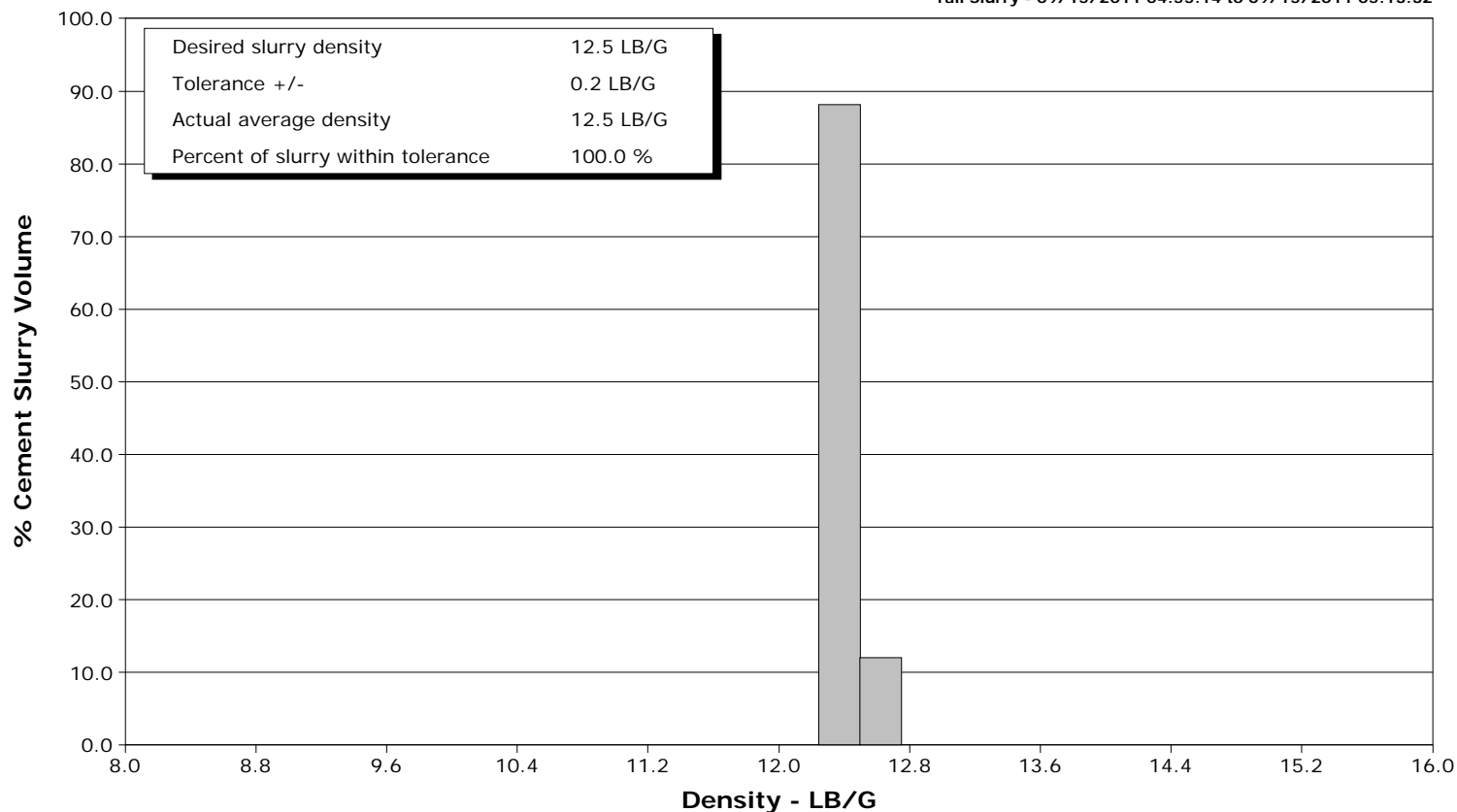
Well SGU 8501E-21 N22 496
Field STORY GULCH
Engineer Jeff Patterson
Country United States

Client ENCANA
SIR No. BQMF-00155
Job Type 9 5/8" SURFACE
Job Date 09-15-2011

Lead Slurry - 09/15/2011 04:12:37 to 09/15/2011 04:49:08



Tail Slurry - 09/15/2011 04:55:14 to 09/15/2011 05:13:32



Page 1 of 4

Well			Field	Job Start	Customer	Job Number
SGU 8501E-21 N22 496 SGU 8501E-21 N22 496			STORY GULCH	Sep/15/2011	ENCANA	BQMF-00155
Date	Time 24-hr clock	Treating Pressure PSI	Flow Rate B/M	Density LB/G	Volume BBL	Message
09/15/2011	03:54:14	4	0.5	8.32	0.0	
09/15/2011	03:55:54	29	0.1	9.96	1.1	
09/15/2011	03:57:34	1501	0.0	9.95	1.3	
09/15/2011	03:59:14	4104	0.0	9.96	1.3	
09/15/2011	04:00:54	74	1.4	9.94	2.6	
09/15/2011	04:02:34	72	1.0	9.87	4.9	
09/15/2011	04:04:14	104	2.9	9.95	8.9	
09/15/2011	04:05:54	218	5.2	10.03	14.5	
09/15/2011	04:07:34	331	6.1	10.01	24.0	
09/15/2011	04:09:14	224	6.1	10.00	34.2	
09/15/2011	04:10:54	238	6.4	10.68	44.5	
09/15/2011	04:11:26					End Spacer
09/15/2011	04:11:26	291	6.2	10.78	47.9	
09/15/2011	04:11:28					Start Cement Slurry
09/15/2011	04:11:28	367	6.2	10.78	48.1	
09/15/2011	04:11:29					Start Mixing Scav Slurry
09/15/2011	04:11:29	238	6.2	10.78	48.2	
09/15/2011	04:12:34	114	4.3	11.00	54.1	
09/15/2011	04:12:36					End Scavenger Slurry
09/15/2011	04:12:36	146	4.2	10.99	54.3	
09/15/2011	04:12:37					Start Mixing Lead Slurry
09/15/2011	04:12:37	258	4.2	10.99	54.3	
09/15/2011	04:12:39					Mixing and pumping 11.0ppg lead slurry.
09/15/2011	04:12:39					Good returns.
09/15/2011	04:12:39	109	4.3	10.99	54.5	
09/15/2011	04:14:14	265	6.6	10.97	63.1	
09/15/2011	04:15:54	145	4.6	10.98	73.8	
09/15/2011	04:17:34	202	4.9	11.02	81.7	
09/15/2011	04:19:14	183	4.8	10.98	89.5	
09/15/2011	04:20:54	154	5.0	11.02	97.6	
09/15/2011	04:22:34	252	6.5	10.99	108.3	
09/15/2011	04:24:14	255	6.5	11.05	119.2	
09/15/2011	04:25:54	248	6.5	10.99	132.0	
09/15/2011	04:27:34	265	6.5	10.98	142.9	
09/15/2011	04:29:14	253	6.5	10.99	153.5	
09/15/2011	04:30:54	250	6.5	11.00	164.3	
09/15/2011	04:32:34	367	8.0	11.02	176.1	
09/15/2011	04:34:14	358	8.0	11.04	189.3	
09/15/2011	04:35:54	377	7.9	11.04	202.6	
09/15/2011	04:37:34	352	8.0	11.04	215.8	
09/15/2011	04:39:14	350	8.0	11.02	229.1	
09/15/2011	04:40:54	349	8.0	11.02	242.4	
09/15/2011	04:42:34	355	8.0	11.05	255.6	
09/15/2011	04:44:14	358	8.0	11.05	268.9	
09/15/2011	04:45:54	351	8.0	11.03	282.2	
09/15/2011	04:47:34	365	8.0	11.08	295.4	
09/15/2011	04:49:08					End Lead Slurry
09/15/2011	04:49:08	267	7.4	11.15	307.9	
09/15/2011	04:49:14					Pumped 504sks/258bbbls of 11.0ppg lead.
09/15/2011	04:49:14	250	6.6	11.13	308.6	
09/15/2011	04:49:15					Good returns.
09/15/2011	04:49:15	257	6.5	11.12	308.7	
09/15/2011	04:50:54	59	2.6	10.95	316.0	
09/15/2011	04:52:34	70	2.9	11.16	319.0	

Well			Field	Job Start	Customer	Job Number
SGU 8501E-21 N22 496 SGU 8501E-21 N22 496			STORY GULCH	Sep/15/2011	ENCANA	BQMF-00155
Date	Time 24-hr clock	Treating Pressure PSI	Flow Rate B/M	Density LB/G	Volume BBL	Message
09/15/2011	04:55:14					Start Mixing Tail Slurry
09/15/2011	04:55:14	79	2.5	12.50	325.2	
09/15/2011	04:55:17					Mixing and pumping 12.5ppg tail slurry.
09/15/2011	04:55:17					Good returns.
09/15/2011	04:55:17	79	2.5	12.52	325.3	
09/15/2011	04:55:54	78	2.4	12.45	332.2	
09/15/2011	04:57:34	264	4.9	12.40	336.8	
09/15/2011	04:59:14	214	4.9	12.45	345.0	
09/15/2011	05:00:54	227	5.0	12.47	353.3	
09/15/2011	05:02:34	213	5.1	12.31	361.7	
09/15/2011	05:04:14	139	3.6	12.43	367.8	
09/15/2011	05:05:54	142	3.6	12.52	373.7	
09/15/2011	05:07:34	146	3.5	12.50	379.6	
09/15/2011	05:09:14	154	3.4	12.47	385.2	
09/15/2011	05:10:54	158	3.4	12.45	390.9	
09/15/2011	05:12:34	122	3.5	12.45	396.5	
09/15/2011	05:13:32					End Tail Slurry
09/15/2011	05:13:32	110	3.5	12.45	399.9	
09/15/2011	05:13:34					Pumped 246sks/79bbls of 12.5ppg tail.
09/15/2011	05:13:34					Good returns.
09/15/2011	05:13:34	138	3.5	12.45	400.1	
09/15/2011	05:13:37					End Cement Slurry
09/15/2011	05:13:37	130	3.5	12.45	400.2	
09/15/2011	05:13:39					Drop Top Plug
09/15/2011	05:13:39	144	3.5	12.44	400.3	
09/15/2011	05:13:40					Start Displacement
09/15/2011	05:13:40	124	3.5	12.44	400.4	
09/15/2011	05:13:42					Displace with fresh water.
09/15/2011	05:13:42					Good returns.
09/15/2011	05:13:42	148	3.5	12.44	400.5	
09/15/2011	05:14:14	136	3.5	12.39	402.4	
09/15/2011	05:15:54	137	3.5	12.35	408.2	
09/15/2011	05:17:34	20	0.0	12.45	410.9	
09/15/2011	05:19:14	11	0.0	12.51	410.9	
09/15/2011	05:20:54	63	2.8	8.95	412.9	
09/15/2011	05:22:34	74	4.0	8.56	418.8	
09/15/2011	05:24:14	194	6.4	8.45	433.7	
09/15/2011	05:25:54	217	6.4	8.43	444.4	
09/15/2011	05:27:34	229	6.4	8.41	455.1	
09/15/2011	05:29:14	249	6.4	8.41	465.8	
09/15/2011	05:30:54	221	5.0	8.39	474.7	
09/15/2011	05:32:34	233	4.9	8.40	482.9	
09/15/2011	05:34:14	269	5.0	8.39	491.2	
09/15/2011	05:34:17					Cement to surface at 68bbls away in displacement.
09/15/2011	05:34:17	277	5.0	8.40	491.4	
09/15/2011	05:34:18					Total of 90bbls of cement to surface.
09/15/2011	05:34:18	277	5.0	8.39	491.5	
09/15/2011	05:35:54	297	5.0	8.38	499.4	
09/15/2011	05:37:34	354	5.0	8.25	507.7	
09/15/2011	05:39:14	364	4.9	8.40	516.0	
09/15/2011	05:40:54	391	5.0	8.39	524.2	
09/15/2011	05:42:34	441	4.9	8.40	532.5	
09/15/2011	05:44:14	439	4.9	8.40	540.7	
09/15/2011	05:45:54	433	4.9	8.40	548.9	

Well			Field		Job Start		Customer		Job Number	
SGU 8501E-21 N22 496 SGU 8501E-21 N22 496			STORY GULCH		Sep/15/2011		ENCANA		BQMF-00155	
Date	Time 24-hr clock	Treating Pressure PSI	Flow Rate B/M	Density LB/G	Volume BBL	Message				
09/15/2011	05:49:14	525	4.9	8.40	565.2					
09/15/2011	05:50:54	484	4.2	8.40	573.0					
09/15/2011	05:52:34	504	4.2	8.40	580.0					
09/15/2011	05:54:14	431	2.4	8.39	584.6					
09/15/2011	05:55:54	486	2.3	8.39	588.5					
09/15/2011	05:56:19					Bump Top Plug				
09/15/2011	05:56:19	993	2.3	8.39	589.5					
09/15/2011	05:56:20					End Displacement				
09/15/2011	05:56:20	1067	2.3	8.39	589.5					
09/15/2011	05:56:22					Bumped plug to 1100psi.				
09/15/2011	05:56:22	1078	2.0	8.39	589.6					
09/15/2011	05:56:23					Final displacement was 159bbls.				
09/15/2011	05:56:23					Hold for 5 minutes.				
09/15/2011	05:56:23					Bleed off pressure.				
09/15/2011	05:56:23					Check floats.				
09/15/2011	05:56:23					Floats held.				
09/15/2011	05:56:23	1098	1.4	8.39	589.6					
09/15/2011	05:56:24					Got 1bbl back.				
09/15/2011	05:56:24					Good returns for entire job.				
09/15/2011	05:56:24					Total cement to surface was 90bbls.				
09/15/2011	05:56:24					Wait on rig to rig up to parasite line to pump it clear.				
09/15/2011	05:56:24	1113	1.4	8.39	589.6					
09/15/2011	05:57:34	1097	0.0	8.40	589.7					
09/15/2011	05:59:14	1099	0.0	8.40	589.7					
09/15/2011	06:00:54	1104	0.0	8.40	589.7					
09/15/2011	06:02:34	757	0.0	8.40	589.7					
09/15/2011	06:04:14	-2	0.0	8.40	589.7					
09/15/2011	06:05:54	-1	0.0	8.40	589.7					
09/15/2011	06:07:34	-2	0.0	8.40	589.7					
09/15/2011	06:09:14	-1	0.0	8.40	589.7					
09/15/2011	06:10:54	-1	0.0	8.40	589.7					
09/15/2011	06:12:18					End Job				
09/15/2011	06:12:18	3	0.1	8.40	599.3					

Post Job Summary

Average Pump Rates, bbl/min					Volume of Fluid Injected, bbl			
Slurry 6.0	N2	Mud	Maximum Rate 8.0	Total Slurry 337.0	Mud	Spacer 50.0	N2	
Treating Pressure Summary, psi					Breakdown Fluid			
Maximum 3000	Final 1100	Average 200	Bump Plug to 1100	Breakdown	Type	Volume	Density	
Avg. N2 Percent		Designed Slurry Volume 337.0 bbl		Displacement 161.0 bbl	Mix Water Temp 65 degF	Cement Circulated to Surface? <input checked="" type="checkbox"/>	Volume 90.0 bbl	
						Washed Thru Perfs <input type="checkbox"/>	To	
Customer or Authorized Representative MIKE QUINTANA			Schlumberger Supervisor Jeff Patterson			Circulation Lost <input type="checkbox"/>	Job Completed <input checked="" type="checkbox"/>	
						-	-	