

PETROLEUM DEVELOPMENT CORP Weld County CO

Well Name: **Gaddis 36J-203**

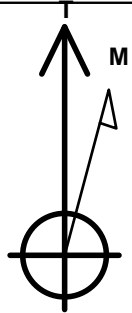
Surface Location: Gaddis Pad Sec.36-T4N-R68W
North American Datum 1983 , US State Plane 1983 , Colorado Northern Zone
Ground Elevation: 5058.0

+N/-S	+E/-W	Northing	Easting	Latitude	Longitude	Slot
0.0	0.0	1344112.39	3151787.01	40.276710	-104.955990	

RKB Ensign 32 - 15' WELL @ 5073.0ft (RKB Ensign 32 - 15')

WELLBORE TARGET DETAILS

Name	TVD	+N/-S	+E/-W	Shape
HARD LINE SHL 460'FNL	1.0	-210.0	-400.0	Polygon
HARDLINE BHL 460'FSL	1.0	-4590.1	-402.8	Polygon
SECTIONLINE 250'N OF SHL	1.0	250.0	-400.0	Polygon
BHL 500'FSL, 1320'FWL	7183.0	-4550.1	-2.8	Point



Azimuths to True North
Magnetic North: 8.87°

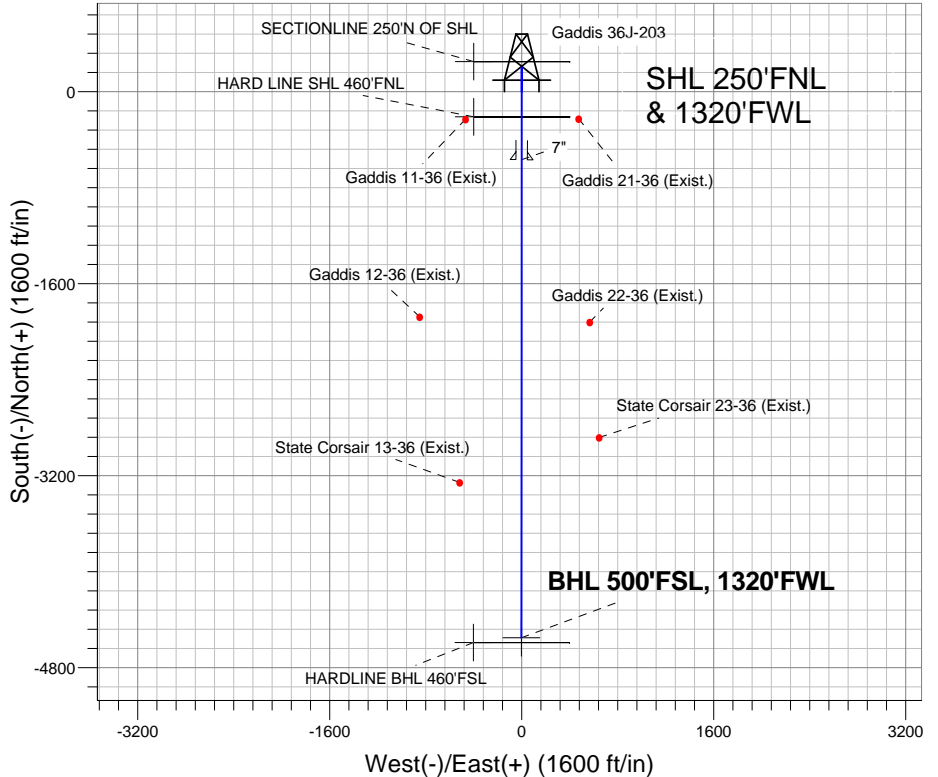
Magnetic Field
Strength: 52977.9nT
Dip Angle: 66.90°
Date: 1/30/2012
Model: IGRF2010

Gaddis Pad Sec.36-T4N-R68W
Gaddis 36J-203
Plan #1 (1-30-12)
9:34, February 08 2012

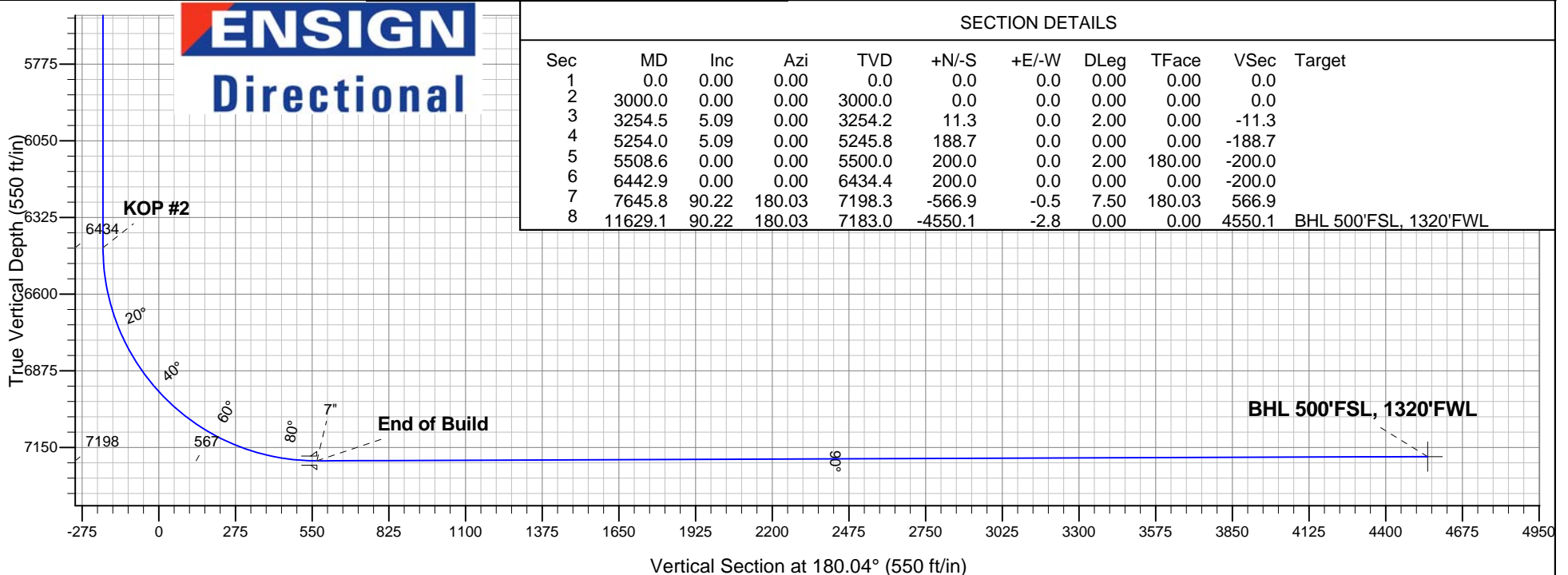
ANNOTATIONS

TVD	MD	Annotation
3000.0	3000.0	KOP #1
6434.3	6442.9	KOP #2
7198.3	7645.8	End of Build

South(-)/North(+) (1600 ft/in)



ENSIGN
Directional



SECTION DETAILS

Sec	MD	Inc	Azi	TVD	+N/-S	+E/-W	DLeg	TFace	VSec	Target
1	0.0	0.00	0.00	0.0	0.0	0.0	0.00	0.00	0.0	
2	3000.0	0.00	0.00	3000.0	0.0	0.0	0.00	0.00	0.0	
3	3254.5	5.09	0.00	3254.2	11.3	0.0	2.00	0.00	-11.3	
4	5254.0	5.09	0.00	5245.8	188.7	0.0	0.00	0.00	-188.7	
5	5508.6	0.00	0.00	5500.0	200.0	0.0	2.00	180.00	-200.0	
6	6442.9	0.00	0.00	6434.4	200.0	0.0	0.00	0.00	-200.0	
7	7645.8	90.22	180.03	7198.3	-566.9	-0.5	7.50	180.03	566.9	
8	11629.1	90.22	180.03	7183.0	-4550.1	-2.8	0.00	0.00	4550.1	BHL 500'FSL, 1320'FWL