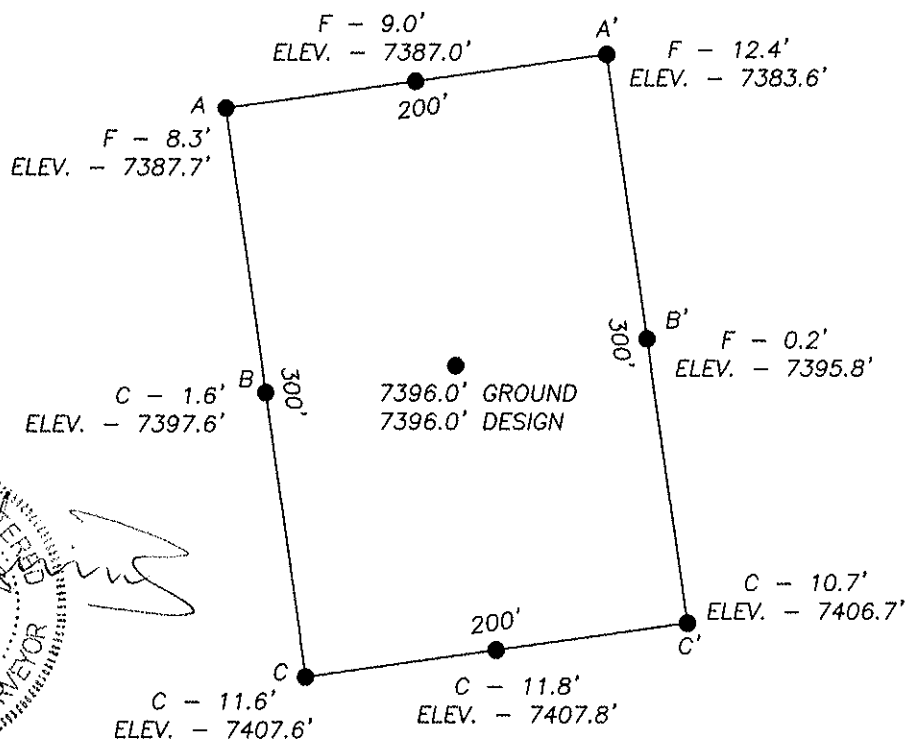


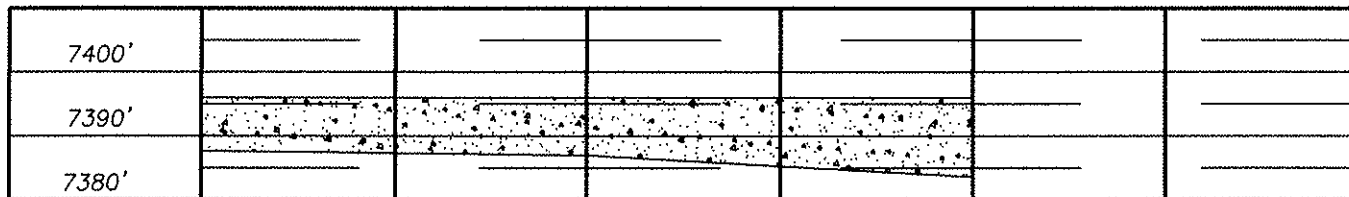
# GAS WELL LOCATION

SG INTERESTS 1, LTD  
FEDERAL 11-90-24 #3  
842' FSL & 118' FEL  
LOCATED IN S. 24, T. 11 S., R. 90 W., 6th P.M.  
GUNNISON COUNTY, COLORADO

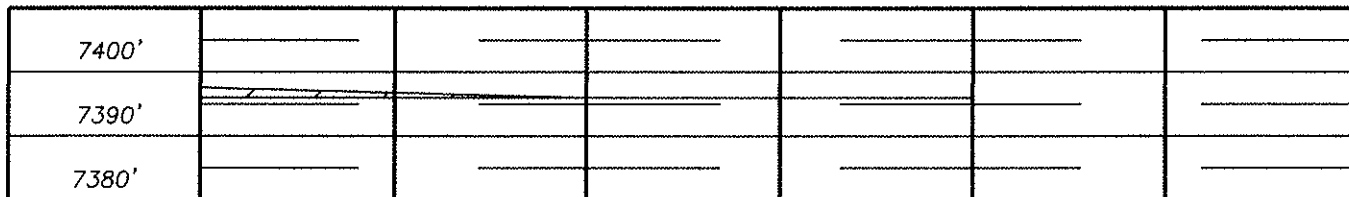


A-A'

Vert: 1" = 30' Horiz.: 1" = 50'



B-B'



C-C'

