

Location:	COLORADO	Slot:	SLOT#08 CAMP 25N-30HZ (460'FSL & 1357'FEL, SEC.31)
Field:	WELD COUNTY (KERR MCGEE)	Well:	CAMP 25N-30HZ
Facility:	SEC.31-T3N-R65W	Wellbore:	CAMP 25N-30HZ PWB

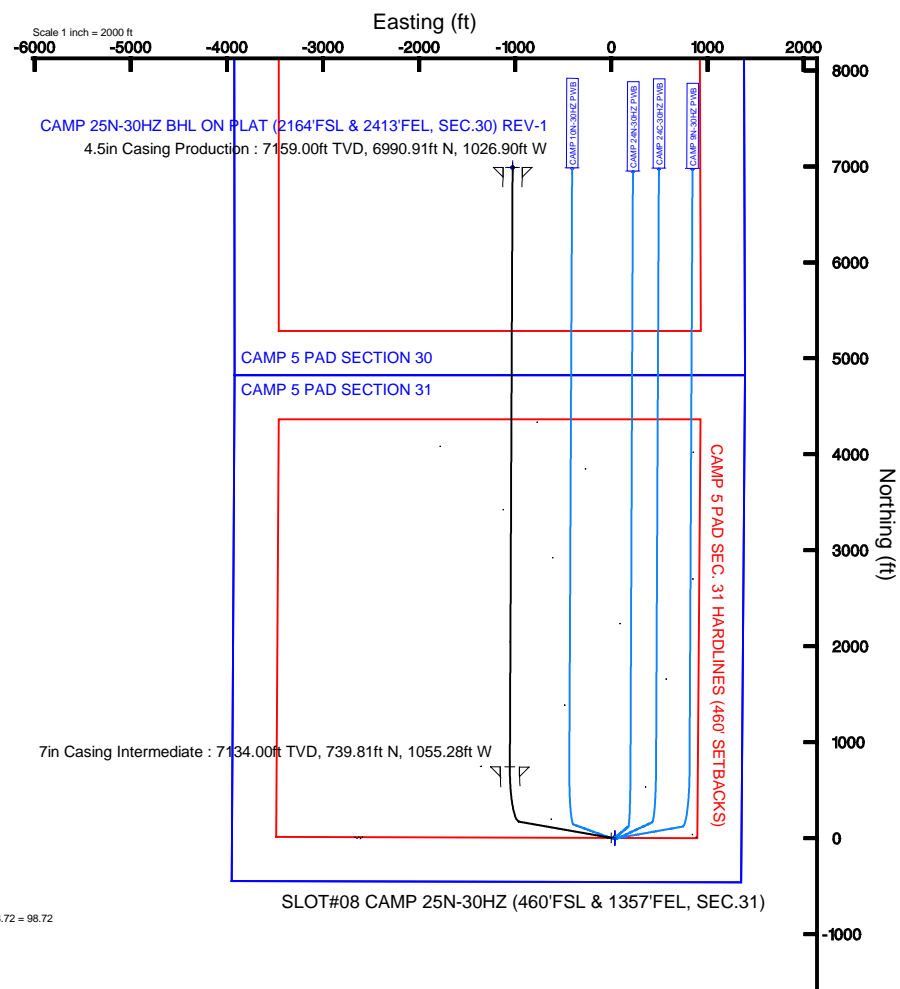
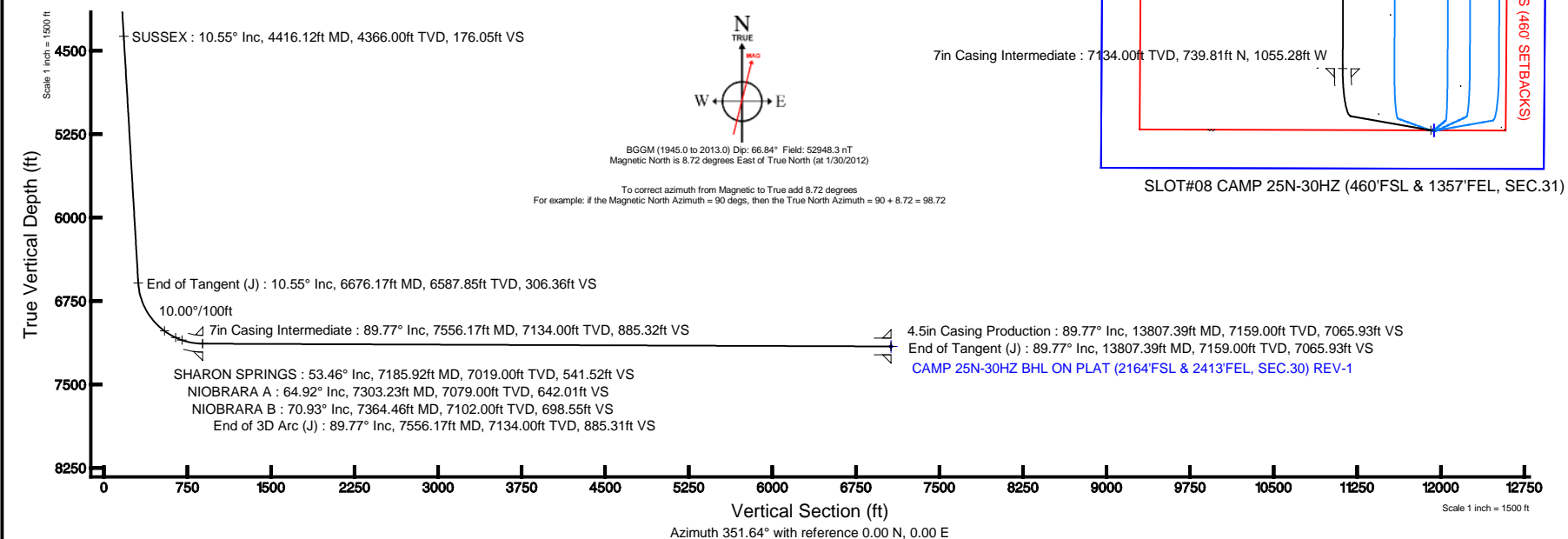
Location:	COLORADO	Slot:	SLOT#08 CAMP 25N-30HZ (460'FSL & 1357'FEL, SEC.31)
Field:	WELD COUNTY (KERR MCGEE)	Well:	CAMP 25N-30HZ
Facility:	SEC.31-T3N-R65W	Wellbore:	CAMP 25N-30HZ PWB

True vertical depths are referenced to XTREME 6 (RKB)	Grid System: NAD83 / Lambert Colorado SP, Northern Zone (501), US feet
Measured depths are referenced to XTREME 6 (RKB)	North Reference: True north
XTREME 6 (RKB) to Mean Sea Level: 4974 feet	Scale: True distance
Mean Sea Level to Mud line (At Slot: SLOT#08 CAMP 25N-30HZ (460FSL & 1357FEL, SEC.31)): 0 feet	Depths are in feet
Coordinates are in feet referenced to Slot	Created by: wilsje#02 on 1/30/2012

Facility Name			Grid East (US ft)	Grid North (US ft)	Latitude	Longitude
SEC.31-T3N-R65W			3220398.633	1307925.729	40°10'33.460"N	104°42'40.493"W
Slot	Local N (ft)	Local E (ft)	Grid East (US ft)	Grid North (US ft)	Latitude	Longitude
SLOT#08 CAMP 25N-30HZ (460°FSL & 1357°FEL, SEC.31)	-6.13	2666.43	3223064.896	1307943.315	40°10'33.398"N	104°42'06.142"W
XTREME 6 (RKB) to Mud line (At Slot: SLOT#08 CAMP 25N-30HZ (460°FSL & 1357°FEL, SEC.31))					4974R	
Mean Sea Level to Mud line (At Slot: SLOT#08 CAMP 25N-30HZ (460°FSL & 1357°FEL, SEC.31))					0ft	
XTREME 6 (RKB) to Mean Sea Level					4974R	

Design Comment	MD (ft)	Inc (°)	Az (°)	TVD (ft)	Local N (ft)	Local E (ft)	DLS (°/100ft)	VS (ft)
Tie On	25.00	0.000	280.000	25.00	0.00	0.00	0.00	0.00
End of Tangent	1100.00	0.000	280.000	1100.00	0.00	0.00	0.00	0.00
End of Build (J)	1627.50	10.550	280.000	1624.52	8.41	-47.69	2.00	15.25
End of Tangent (J)	6676.17	10.550	280.000	6587.85	168.93	-958.03	0.00	306.36
End of 3D Arc (J)	7556.17	89.771	0.260	7134.00	739.80	-1055.28	10.00	885.31
End of Tangent (J)	13807.39	89.771	0.260	7159.00	6990.91	-1026.90	0.00	7065.93

Name	MD (ft)	TVD (ft)	Local N (ft)	Local E (ft)	Grid East (US ft)	Grid North (US ft)	Latitude	Longitude
CAMP 5 PAD SECTION 30		0.00	0.00	37.49	3223102.38	1307943.65	40°10'33.398"N	104°42'05.656"W
CAMP 5 PAD SECTION 31		0.00	0.00	37.49	3223102.38	1307943.65	40°10'33.398"N	104°42'05.656"W
CAMP 25N-30H-2C BHL ON PLAT (2164 FSL & 2413 FSL SEC. 30) REV-1	13807.39	7159.00	6990.91	-1026.90	3221975.15	1314604.39	40°11'42.482"N	104°42'19.375"W
CAMP 5 PAD SEC. 30 HARDLINES (460' SETBACKS)		7400.00	0.00	37.49	3223102.38	1307943.65	40°10'33.398"N	104°42'05.656"W
CAMP 5 PAD SEC. 31 HARDLINES (460' SETBACKS)		7400.00	0.00	37.49	3223102.38	1307943.65	40°10'33.398"N	104°42'05.656"W





Planned Wellpath Report

CAMP 25N-30HZ (PERMIT) PWP

Page 1 of 6



REFERENCE WELLPATH IDENTIFICATION

Operator	ANADARKO E&P COMPANY LP	Slot	SLOT#08 CAMP 25N-30HZ (460'FSL & 1357'FEL, SEC.31)
Area	COLORADO	Well	CAMP 25N-30HZ
Field	WELD COUNTY (KERR MCGEE)	Wellbore	CAMP 25N-30HZ PWB
Facility	SEC.31-T3N-R65W		

REPORT SETUP INFORMATION

Projection System	NAD83 / Lambert Colorado SP, Northern Zone (501), US feet	Software System	WellArchitect® 3.0.2
North Reference	True	User	Wilsjef02
Scale	0.999958	Report Generated	1/30/2012 at 1:44:26 PM
Convergence at slot	0.52° East	Database/Source file	WellArchitectDB/CAMP_25N-30HZ_PWB.xml

WELLPATH LOCATION

	Local coordinates		Grid coordinates		Geographic coordinates	
	North[ft]	East[ft]	Easting[US ft]	Northing[US ft]	Latitude	Longitude
Slot Location	-6.13	2666.43	3223064.90	1307943.32	40°10'33.398"N	104°42'06.142"W
Facility Reference Pt			3220398.63	1307925.73	40°10'33.460"N	104°42'40.493"W
Field Reference Pt			3197771.84	1268891.29	40°04'09.600"N	104°47'36.000"W

WELLPATH DATUM

Calculation method	Minimum curvature	XTREME 6 (RKB) to Facility Vertical Datum	4974.00ft
Horizontal Reference Pt	Slot	XTREME 6 (RKB) to Mean Sea Level	4974.00ft
Vertical Reference Pt	XTREME 6 (RKB)	XTREME 6 (RKB) to Mud Line at Slot (SLOT#08 CAMP 25N-30HZ (460'FSL & 1357'FEL, SEC.31))	4974.00ft
MD Reference Pt	XTREME 6 (RKB)	Section Origin	N 0.00, E 0.00 ft
Field Vertical Reference	Mean Sea Level	Section Azimuth	351.64°



Planned Wellpath Report

CAMP 25N-30HZ (PERMIT) PWP

Page 2 of 6



REFERENCE WELLPATH IDENTIFICATION			
Operator	ANADARKO E&P COMPANY LP	Slot	SLOT#08 CAMP 25N-30HZ (460'FSL & 1357'FEL, SEC.31)
Area	COLORADO	Well	CAMP 25N-30HZ
Field	WELD COUNTY (KERR MCGEE)	Wellbore	CAMP 25N-30HZ PWB
Facility	SEC.31-T3N-R65W		

WELLPATH DATA (149 stations) † = interpolated/extrapolated station										
MD [ft]	Inclination [°]	Azimuth [°]	TVD [ft]	Vert Sect [ft]	North [ft]	East [ft]	Latitude	Longitude	DLS [°/100ft]	Comments
0.00†	0.000	280.000	0.00	0.00	0.00	0.00	40°10'33.398"N	104°42'06.142"W	0.00	Tie On
25.00	0.000	280.000	25.00	0.00	0.00	0.00	40°10'33.398"N	104°42'06.142"W	0.00	
125.00†	0.000	280.000	125.00	0.00	0.00	0.00	40°10'33.398"N	104°42'06.142"W	0.00	
225.00†	0.000	280.000	225.00	0.00	0.00	0.00	40°10'33.398"N	104°42'06.142"W	0.00	
325.00†	0.000	280.000	325.00	0.00	0.00	0.00	40°10'33.398"N	104°42'06.142"W	0.00	
425.00†	0.000	280.000	425.00	0.00	0.00	0.00	40°10'33.398"N	104°42'06.142"W	0.00	
525.00†	0.000	280.000	525.00	0.00	0.00	0.00	40°10'33.398"N	104°42'06.142"W	0.00	
625.00†	0.000	280.000	625.00	0.00	0.00	0.00	40°10'33.398"N	104°42'06.142"W	0.00	
725.00†	0.000	280.000	725.00	0.00	0.00	0.00	40°10'33.398"N	104°42'06.142"W	0.00	
825.00†	0.000	280.000	825.00	0.00	0.00	0.00	40°10'33.398"N	104°42'06.142"W	0.00	
925.00†	0.000	280.000	925.00	0.00	0.00	0.00	40°10'33.398"N	104°42'06.142"W	0.00	
1025.00†	0.000	280.000	1025.00	0.00	0.00	0.00	40°10'33.398"N	104°42'06.142"W	0.00	End of Tangent
1100.00	0.000	280.000	1100.00	0.00	0.00	0.00	40°10'33.398"N	104°42'06.142"W	0.00	
1125.00†	0.500	280.000	1125.00	0.03	0.02	-0.11	40°10'33.398"N	104°42'06.143"W	2.00	
1225.00†	2.500	280.000	1224.96	0.86	0.47	-2.69	40°10'33.403"N	104°42'06.177"W	2.00	
1325.00†	4.500	280.000	1324.77	2.78	1.53	-8.70	40°10'33.413"N	104°42'06.254"W	2.00	
1425.00†	6.500	280.000	1424.30	5.80	3.20	-18.14	40°10'33.430"N	104°42'06.376"W	2.00	
1525.00†	8.500	280.000	1523.44	9.91	5.46	-30.99	40°10'33.452"N	104°42'06.541"W	2.00	
1625.00†	10.500	280.000	1622.07	15.11	8.33	-47.24	40°10'33.480"N	104°42'06.751"W	2.00	
1627.50	10.550	280.000	1624.52	15.25	8.41	-47.69	40°10'33.481"N	104°42'06.756"W	2.00	End of Build (J)
1725.00†	10.550	280.000	1720.38	20.87	11.51	-65.27	40°10'33.512"N	104°42'06.983"W	0.00	
1825.00†	10.550	280.000	1818.69	26.64	14.69	-83.30	40°10'33.543"N	104°42'07.215"W	0.00	
1925.00†	10.550	280.000	1917.00	32.41	17.87	-101.33	40°10'33.575"N	104°42'07.447"W	0.00	
2025.00†	10.550	280.000	2015.30	38.17	21.05	-119.37	40°10'33.606"N	104°42'07.680"W	0.00	
2125.00†	10.550	280.000	2113.61	43.94	24.23	-137.40	40°10'33.637"N	104°42'07.912"W	0.00	
2225.00†	10.550	280.000	2211.92	49.70	27.41	-155.43	40°10'33.669"N	104°42'08.144"W	0.00	
2325.00†	10.550	280.000	2310.23	55.47	30.59	-173.46	40°10'33.700"N	104°42'08.377"W	0.00	
2425.00†	10.550	280.000	2408.54	61.24	33.77	-191.49	40°10'33.732"N	104°42'08.609"W	0.00	
2525.00†	10.550	280.000	2506.85	67.00	36.94	-209.52	40°10'33.763"N	104°42'08.841"W	0.00	
2625.00†	10.550	280.000	2605.16	72.77	40.12	-227.55	40°10'33.794"N	104°42'09.074"W	0.00	
2725.00†	10.550	280.000	2703.47	78.53	43.30	-245.58	40°10'33.826"N	104°42'09.306"W	0.00	
2825.00†	10.550	280.000	2801.78	84.30	46.48	-263.62	40°10'33.857"N	104°42'09.538"W	0.00	
2925.00†	10.550	280.000	2900.09	90.07	49.66	-281.65	40°10'33.889"N	104°42'09.770"W	0.00	
3025.00†	10.550	280.000	2998.40	95.83	52.84	-299.68	40°10'33.920"N	104°42'10.003"W	0.00	
3125.00†	10.550	280.000	3096.71	101.60	56.02	-317.71	40°10'33.952"N	104°42'10.235"W	0.00	
3225.00†	10.550	280.000	3195.02	107.36	59.20	-335.74	40°10'33.983"N	104°42'10.467"W	0.00	
3325.00†	10.550	280.000	3293.33	113.13	62.38	-353.77	40°10'34.014"N	104°42'10.700"W	0.00	
3425.00†	10.550	280.000	3391.64	118.90	65.56	-371.80	40°10'34.046"N	104°42'10.932"W	0.00	
3525.00†	10.550	280.000	3489.95	124.66	68.74	-389.83	40°10'34.077"N	104°42'11.164"W	0.00	
3625.00†	10.550	280.000	3588.26	130.43	71.92	-407.87	40°10'34.109"N	104°42'11.396"W	0.00	
3725.00†	10.550	280.000	3686.57	136.20	75.10	-425.90	40°10'34.140"N	104°42'11.629"W	0.00	
3825.00†	10.550	280.000	3784.88	141.96	78.28	-443.93	40°10'34.171"N	104°42'11.861"W	0.00	
3925.00†	10.550	280.000	3883.19	147.73	81.46	-461.96	40°10'34.203"N	104°42'12.093"W	0.00	
3990.93†	10.550	280.000	3948.00	151.53	83.55	-473.85	40°10'34.224"N	104°42'12.246"W	0.00	PARKMAN
4025.00†	10.550	280.000	3981.50	153.49	84.64	-479.99	40°10'34.234"N	104°42'12.326"W	0.00	
4125.00†	10.550	280.000	4079.81	159.26	87.81	-498.02	40°10'34.266"N	104°42'12.558"W	0.00	
4225.00†	10.550	280.000	4178.11	165.03	90.99	-516.05	40°10'34.297"N	104°42'12.790"W	0.00	
4325.00†	10.550	280.000	4276.42	170.79	94.17	-534.08	40°10'34.329"N	104°42'13.022"W	0.00	
4416.12†	10.550	280.000	4366.00	176.05	97.07	-550.51	40°10'34.357"N	104°42'13.234"W	0.00	SUSSEX
4425.00†	10.550	280.000	4374.73	176.56	97.35	-552.11	40°10'34.360"N	104°42'13.255"W	0.00	
4525.00†	10.550	280.000	4473.04	182.32	100.53	-570.15	40°10'34.391"N	104°42'13.487"W	0.00	
4625.00†	10.550	280.000	4571.35	188.09	103.71	-588.18	40°10'34.423"N	104°42'13.719"W	0.00	
4725.00†	10.550	280.000	4669.66	193.86	106.89	-606.21	40°10'34.454"N	104°42'13.952"W	0.00	
4825.00†	10.550	280.000	4767.97	199.62	110.07	-624.24	40°10'34.486"N	104°42'14.184"W	0.00	
4925.00†	10.550	280.000	4866.28	205.39	113.25	-642.27	40°10'34.517"N	104°42'14.416"W	0.00	
5025.00†	10.550	280.000	4964.59	211.16	116.43	-660.30	40°10'34.548"N	104°42'14.649"W	0.00	
5125.00†	10.550	280.000	5062.90	216.92	119.61	-678.33	40°10'34.580"N	104°42'14.881"W	0.00	
5225.00†	10.550	280.000	5161.21	222.69	122.79	-696.36	40°10'34.611"N	104°42'15.113"W	0.00	
5325.00†	10.550	280.000	5259.52	228.45	125.97	-714.40	40°10'34.643"N	104°42'15.345"W	0.00	
5425.00†	10.550	280.000	5357.83	234.22	129.15	-732.43	40°10'34.674"N	104°42'15.578"W	0.00	



Planned Wellpath Report

CAMP 25N-30HZ (PERMIT) PWP

Page 3 of 6



REFERENCE WELLPATH IDENTIFICATION									
Operator	ANADARKO E&P COMPANY LP					Slot	SLOT#08 CAMP 25N-30HZ (460'FSL & 1357'FEL, SEC.31)		
Area	COLORADO					Well	CAMP 25N-30HZ		
Field	WELD COUNTY (KERR MCGEE)					Wellbore	CAMP 25N-30HZ PWB		
Facility	SEC.31-T3N-R65W								

WELLPATH DATA (149 stations) † = interpolated/extrapolated station										
MD [ft]	Inclination [°]	Azimuth [°]	TVD [ft]	Vert Sect [ft]	North [ft]	East [ft]	Latitude	Longitude	DLS [°/100ft]	Comments
5525.00†	10.550	280.000	5456.14	239.99	132.33	-750.46	40°10'34.706"N	104°42'15.810"W	0.00	
5625.00†	10.550	280.000	5554.45	245.75	135.51	-768.49	40°10'34.737"N	104°42'16.042"W	0.00	
5725.00†	10.550	280.000	5652.76	251.52	138.68	-786.52	40°10'34.768"N	104°42'16.275"W	0.00	
5825.00†	10.550	280.000	5751.07	257.28	141.86	-804.55	40°10'34.800"N	104°42'16.507"W	0.00	
5925.00†	10.550	280.000	5849.38	263.05	145.04	-822.58	40°10'34.831"N	104°42'16.739"W	0.00	
6025.00†	10.550	280.000	5947.69	268.82	148.22	-840.61	40°10'34.863"N	104°42'16.971"W	0.00	
6125.00†	10.550	280.000	6046.00	274.58	151.40	-858.64	40°10'34.894"N	104°42'17.204"W	0.00	
6225.00†	10.550	280.000	6144.31	280.35	154.58	-876.68	40°10'34.925"N	104°42'17.436"W	0.00	
6325.00†	10.550	280.000	6242.62	286.11	157.76	-894.71	40°10'34.957"N	104°42'17.668"W	0.00	
6425.00†	10.550	280.000	6340.92	291.88	160.94	-912.74	40°10'34.988"N	104°42'17.901"W	0.00	
6525.00†	10.550	280.000	6439.23	297.65	164.12	-930.77	40°10'35.020"N	104°42'18.133"W	0.00	
6625.00†	10.550	280.000	6537.54	303.41	167.30	-948.80	40°10'35.051"N	104°42'18.365"W	0.00	
6676.17	10.550	280.000	6587.85	306.36	168.93	-958.03	40°10'35.067"N	104°42'18.484"W	0.00	End of Tangent (J)
6725.00†	12.327	303.154	6635.73	311.23	172.56	-966.80	40°10'35.103"N	104°42'18.597"W	10.00	
6825.00†	19.555	329.181	6731.94	333.83	192.82	-984.35	40°10'35.303"N	104°42'18.823"W	10.00	
6925.00†	28.470	340.514	6823.24	372.78	229.75	-1000.92	40°10'35.668"N	104°42'19.037"W	10.00	
7025.00†	37.898	346.661	6906.86	426.90	282.24	-1016.00	40°10'36.187"N	104°42'19.231"W	10.00	
7125.00†	47.533	350.629	6980.26	494.54	348.68	-1029.12	40°10'36.843"N	104°42'19.400"W	10.00	
7185.92†	53.455	352.482	7019.00	541.52	395.15	-1035.99	40°10'37.303"N	104°42'19.489"W	10.00	SHARON SPRINGS
7225.00†	57.268	353.525	7041.21	573.66	427.07	-1039.90	40°10'37.618"N	104°42'19.539"W	10.00	
7303.23†	64.923	355.374	7079.00	642.01	495.18	-1046.47	40°10'38.291"N	104°42'19.624"W	10.00	NIOBRARA A
7325.00†	67.056	355.845	7087.86	661.84	515.00	-1047.99	40°10'38.487"N	104°42'19.643"W	10.00	
7364.46†	70.928	356.663	7102.00	698.55	551.76	-1050.40	40°10'38.850"N	104°42'19.674"W	10.00	NIOBRARA B
7425.00†	76.874	357.849	7118.78	756.41	609.83	-1053.17	40°10'39.424"N	104°42'19.710"W	10.00	
7525.00†	86.706	359.697	7133.05	854.49	708.65	-1055.27	40°10'40.401"N	104°42'19.737"W	10.00	
7556.17	89.771	0.260	7134.00	885.31	739.80	-1055.28	40°10'40.709"N	104°42'19.737"W	10.00	End of 3D Arc (J)
7625.00†	89.771	0.260	7134.28	953.37	808.64	-1054.97	40°10'41.389"N	104°42'19.733"W	0.00	
7725.00†	89.771	0.260	7134.68	1052.24	908.63	-1054.51	40°10'42.377"N	104°42'19.728"W	0.00	
7825.00†	89.771	0.260	7135.08	1151.11	1008.63	-1054.06	40°10'43.365"N	104°42'19.722"W	0.00	
7925.00†	89.771	0.260	7135.48	1249.98	1108.63	-1053.61	40°10'44.353"N	104°42'19.716"W	0.00	
8025.00†	89.771	0.260	7135.88	1348.85	1208.63	-1053.15	40°10'45.341"N	104°42'19.710"W	0.00	
8125.00†	89.771	0.260	7136.28	1447.72	1308.63	-1052.70	40°10'46.330"N	104°42'19.704"W	0.00	
8225.00†	89.771	0.260	7136.68	1546.59	1408.62	-1052.24	40°10'47.318"N	104°42'19.699"W	0.00	
8325.00†	89.771	0.260	7137.08	1645.46	1508.62	-1051.79	40°10'48.306"N	104°42'19.693"W	0.00	
8425.00†	89.771	0.260	7137.48	1744.33	1608.62	-1051.34	40°10'49.294"N	104°42'19.687"W	0.00	
8525.00†	89.771	0.260	7137.88	1843.20	1708.62	-1050.88	40°10'50.282"N	104°42'19.681"W	0.00	
8625.00†	89.771	0.260	7138.28	1942.07	1808.62	-1050.43	40°10'51.271"N	104°42'19.675"W	0.00	
8725.00†	89.771	0.260	7138.68	2040.94	1908.61	-1049.97	40°10'52.259"N	104°42'19.670"W	0.00	
8825.00†	89.771	0.260	7139.08	2139.82	2008.61	-1049.52	40°10'53.247"N	104°42'19.664"W	0.00	
8925.00†	89.771	0.260	7139.48	2238.69	2108.61	-1049.07	40°10'54.235"N	104°42'19.658"W	0.00	
9025.00†	89.771	0.260	7139.88	2337.56	2208.61	-1048.61	40°10'55.223"N	104°42'19.652"W	0.00	
9125.00†	89.771	0.260	7140.28	2436.43	2308.61	-1048.16	40°10'56.211"N	104°42'19.646"W	0.00	
9225.00†	89.771	0.260	7140.68	2535.30	2408.61	-1047.70	40°10'57.200"N	104°42'19.641"W	0.00	
9325.00†	89.771	0.260	7141.08	2634.17	2508.60	-1047.25	40°10'58.188"N	104°42'19.635"W	0.00	
9425.00†	89.771	0.260	7141.48	2733.04	2608.60	-1046.80	40°10'59.176"N	104°42'19.629"W	0.00	
9525.00†	89.771	0.260	7141.88	2831.91	2708.60	-1046.34	40°11'00.164"N	104°42'19.623"W	0.00	
9625.00†	89.771	0.260	7142.28	2930.78	2808.60	-1045.89	40°11'01.152"N	104°42'19.617"W	0.00	
9725.00†	89.771	0.260	7142.68	3029.65	2908.60	-1045.43	40°11'02.141"N	104°42'19.612"W	0.00	
9825.00†	89.771	0.260	7143.08	3128.52	3008.59	-1044.98	40°11'03.129"N	104°42'19.606"W	0.00	
9925.00†	89.771	0.260	7143.48	3227.39	3108.59	-1044.53	40°11'04.117"N	104°42'19.600"W	0.00	
10025.00†	89.771	0.260	7143.88	3326.26	3208.59	-1044.07	40°11'05.105"N	104°42'19.594"W	0.00	
10125.00†	89.771	0.260	7144.28	3425.13	3308.59	-1043.62	40°11'06.093"N	104°42'19.588"W	0.00	
10225.00†	89.771	0.260	7144.68	3524.00	3408.59	-1043.16	40°11'07.081"N	104°42'19.583"W	0.00	
10325.00†	89.771	0.260	7145.08	3622.87	3508.59	-1042.71	40°11'08.070"N	104°42'19.577"W	0.00	
10425.00†	89.771	0.260	7145.48	3721.74	3608.58	-1042.25	40°11'09.058"N	104°42'19.571"W	0.00	
10525.00†	89.771	0.260	7145.88	3820.61	3708.58	-1041.80	40°11'10.046"N	104°42'19.565"W	0.00	
10625.00†	89.771	0.260	7146.27	3919.48	3808.58	-1041.35	40°11'11.034"N	104°42'19.559"W	0.00	
10725.00†	89.771	0.260	7146.67	4018.36	3908.58	-1040.89	40°11'12.022"N	104°42'19.554"W	0.00	
10825.00†	89.771	0.260	7147.07	4117.23	4008.58	-1040.44	40°11'13.011"N	104°42'19.548"W	0.00	
10925.00†	89.771	0.260	7147.47	4216.10	4108.57	-1039.98	40°11'13.999"N	104°42'19.542"W	0.00	



Planned Wellpath Report

CAMP 25N-30HZ (PERMIT) PWP

Page 4 of 6



REFERENCE WELLPATH IDENTIFICATION

Operator	ANADARKO E&P COMPANY LP	Slot	SLOT#08 CAMP 25N-30HZ (460'FSL & 1357'FEL, SEC.31)
Area	COLORADO	Well	CAMP 25N-30HZ
Field	WELD COUNTY (KERR MCGEE)	Wellbore	CAMP 25N-30HZ PWB
Facility	SEC.31-T3N-R65W		

WELLPATH DATA (149 stations) † = interpolated/extrapolated station

MD [ft]	Inclination [°]	Azimuth [°]	TVD [ft]	Vert Sect [ft]	North [ft]	East [ft]	Latitude	Longitude	DLS [°/100ft]	Comments
11025.00†	89.771	0.260	7147.87	4314.97	4208.57	-1039.53	40°11'14.987"N	104°42'19.536"W	0.00	
11125.00†	89.771	0.260	7148.27	4413.84	4308.57	-1039.08	40°11'15.975"N	104°42'19.531"W	0.00	
11225.00†	89.771	0.260	7148.67	4512.71	4408.57	-1038.62	40°11'16.963"N	104°42'19.525"W	0.00	
11325.00†	89.771	0.260	7149.07	4611.58	4508.57	-1038.17	40°11'17.952"N	104°42'19.519"W	0.00	
11425.00†	89.771	0.260	7149.47	4710.45	4608.57	-1037.71	40°11'18.940"N	104°42'19.513"W	0.00	
11525.00†	89.771	0.260	7149.87	4809.32	4708.56	-1037.26	40°11'19.928"N	104°42'19.507"W	0.00	
11625.00†	89.771	0.260	7150.27	4908.19	4808.56	-1036.81	40°11'20.916"N	104°42'19.502"W	0.00	
11725.00†	89.771	0.260	7150.67	5007.06	4908.56	-1036.35	40°11'21.904"N	104°42'19.496"W	0.00	
11825.00†	89.771	0.260	7151.07	5105.93	5008.56	-1035.90	40°11'22.892"N	104°42'19.490"W	0.00	
11925.00†	89.771	0.260	7151.47	5204.80	5108.56	-1035.44	40°11'23.881"N	104°42'19.484"W	0.00	
12025.00†	89.771	0.260	7151.87	5303.67	5208.55	-1034.99	40°11'24.869"N	104°42'19.478"W	0.00	
12125.00†	89.771	0.260	7152.27	5402.54	5308.55	-1034.54	40°11'25.857"N	104°42'19.473"W	0.00	
12225.00†	89.771	0.260	7152.67	5501.41	5408.55	-1034.08	40°11'26.845"N	104°42'19.467"W	0.00	
12325.00†	89.771	0.260	7153.07	5600.28	5508.55	-1033.63	40°11'27.833"N	104°42'19.461"W	0.00	
12425.00†	89.771	0.260	7153.47	5699.15	5608.55	-1033.17	40°11'28.822"N	104°42'19.455"W	0.00	
12525.00†	89.771	0.260	7153.87	5798.02	5708.55	-1032.72	40°11'29.810"N	104°42'19.449"W	0.00	
12625.00†	89.771	0.260	7154.27	5896.89	5808.54	-1032.27	40°11'30.798"N	104°42'19.444"W	0.00	
12725.00†	89.771	0.260	7154.67	5995.77	5908.54	-1031.81	40°11'31.786"N	104°42'19.438"W	0.00	
12825.00†	89.771	0.260	7155.07	6094.64	6008.54	-1031.36	40°11'32.774"N	104°42'19.432"W	0.00	
12925.00†	89.771	0.260	7155.47	6193.51	6108.54	-1030.90	40°11'33.762"N	104°42'19.426"W	0.00	
13025.00†	89.771	0.260	7155.87	6292.38	6208.54	-1030.45	40°11'34.751"N	104°42'19.420"W	0.00	
13125.00†	89.771	0.260	7156.27	6391.25	6308.53	-1030.00	40°11'35.739"N	104°42'19.415"W	0.00	
13225.00†	89.771	0.260	7156.67	6490.12	6408.53	-1029.54	40°11'36.727"N	104°42'19.409"W	0.00	
13325.00†	89.771	0.260	7157.07	6588.99	6508.53	-1029.09	40°11'37.715"N	104°42'19.403"W	0.00	
13425.00†	89.771	0.260	7157.47	6687.86	6608.53	-1028.63	40°11'38.703"N	104°42'19.397"W	0.00	
13525.00†	89.771	0.260	7157.87	6786.73	6708.53	-1028.18	40°11'39.692"N	104°42'19.391"W	0.00	
13625.00†	89.771	0.260	7158.27	6885.60	6808.53	-1027.72	40°11'40.680"N	104°42'19.386"W	0.00	
13725.00†	89.771	0.260	7158.67	6984.47	6908.52	-1027.27	40°11'41.668"N	104°42'19.380"W	0.00	
13807.39	89.771	0.260	7159.00 ¹	7065.93	6990.91	-1026.90	40°11'42.482"N	104°42'19.375"W	0.00	End of Tangent (J)

HOLE & CASING SECTIONS - Ref Wellbore: CAMP 25N-30HZ PWB Ref Wellpath: CAMP 25N-30HZ (PERMIT) PWP

String/Diameter	Start MD [ft]	End MD [ft]	Interval [ft]	Start TVD [ft]	End TVD [ft]	Start N/S [ft]	Start E/W [ft]	End N/S [ft]	End E/W [ft]
13.5in Open Hole	25.00	800.00	775.00	25.00	800.00	0.00	0.00	0.00	0.00
9.625in Casing Surface	25.00	800.00	775.00	25.00	800.00	0.00	0.00	0.00	0.00
8.75in Open Hole	800.00	7556.17	6756.17	800.00	7134.00	0.00	0.00	739.81	-1055.28
7in Casing Intermediate	25.00	7556.17	7531.17	25.00	7134.00	0.00	0.00	739.81	-1055.28
6.125in Open Hole	7556.17	13807.39	6251.22	7134.00	7159.00	739.81	-1055.28	6990.91	-1026.90
4.5in Casing Production	25.00	13807.39	13782.39	25.00	7159.00	0.00	0.00	6990.91	-1026.90



Planned Wellpath Report

CAMP 25N-30HZ (PERMIT) PWP

Page 5 of 6



REFERENCE WELLPATH IDENTIFICATION			
Operator	ANADARKO E&P COMPANY LP	Slot	SLOT#08 CAMP 25N-30HZ (460'FSL & 1357'FEL, SEC.31)
Area	COLORADO	Well	CAMP 25N-30HZ
Field	WELD COUNTY (KERR MCGEE)	Wellbore	CAMP 25N-30HZ PWB
Facility	SEC.31-T3N-R65W		

TARGETS									
Name	MD [ft]	TVD [ft]	North [ft]	East [ft]	Grid East [US ft]	Grid North [US ft]	Latitude	Longitude	Shape
CAMP 5 PAD SECTION 30		0.00	0.00	37.49	3223102.38	1307943.65	40°10'33.398"N	104°42'05.659"W	polygon
CAMP 5 PAD SECTION 31		0.00	0.00	37.49	3223102.38	1307943.65	40°10'33.398"N	104°42'05.659"W	polygon
1) CAMP 25N-30HZ BHL ON PLAT (2164'FSL & 2413'FEL, SEC.30) REV-1	13807.39	7159.00	6990.91	-1026.90	3221975.15	1314924.39	40°11'42.482"N	104°42'19.375"W	point
CAMP 5 PAD SEC. 30 HARDLINES (460' SETBACKS)		7400.00	0.00	37.49	3223102.38	1307943.65	40°10'33.398"N	104°42'05.659"W	polygon
CAMP 5 PAD SEC. 31 HARDLINES (460' SETBACKS)		7400.00	0.00	37.49	3223102.38	1307943.65	40°10'33.398"N	104°42'05.659"W	polygon

SURVEY PROGRAM - Ref Wellbore: CAMP 25N-30HZ PWB Ref Wellpath: CAMP 25N-30HZ (PERMIT) PWP				
Start MD [ft]	End MD [ft]	Positional Uncertainty Model	Log Name/Comment	Wellbore
25.00	13807.43	NaviTrak (Standard)		CAMP 25N-30HZ PWB



Planned Wellpath Report

CAMP 25N-30HZ (PERMIT) PWP

Page 6 of 6



REFERENCE WELLPATH IDENTIFICATION

Operator	ANADARKO E&P COMPANY LP	Slot	SLOT#08 CAMP 25N-30HZ (460'FSL & 1357'FEL, SEC.31)
Area	COLORADO	Well	CAMP 25N-30HZ
Field	WELD COUNTY (KERR MCGEE)	Wellbore	CAMP 25N-30HZ PWB
Facility	SEC.31-T3N-R65W		

WELLPATH COMMENTS

MD [ft]	Inclination [°]	Azimuth [°]	TVD [ft]	Comment
3990.93	10.550	280.000	3948.00	PARKMAN
4416.12	10.550	280.000	4366.00	SUSSEX
7185.92	53.455	352.482	7019.00	SHARON SPRINGS
7303.23	64.923	355.374	7079.00	NIOBRARA A
7364.46	70.928	356.663	7102.00	NIOBRARA B