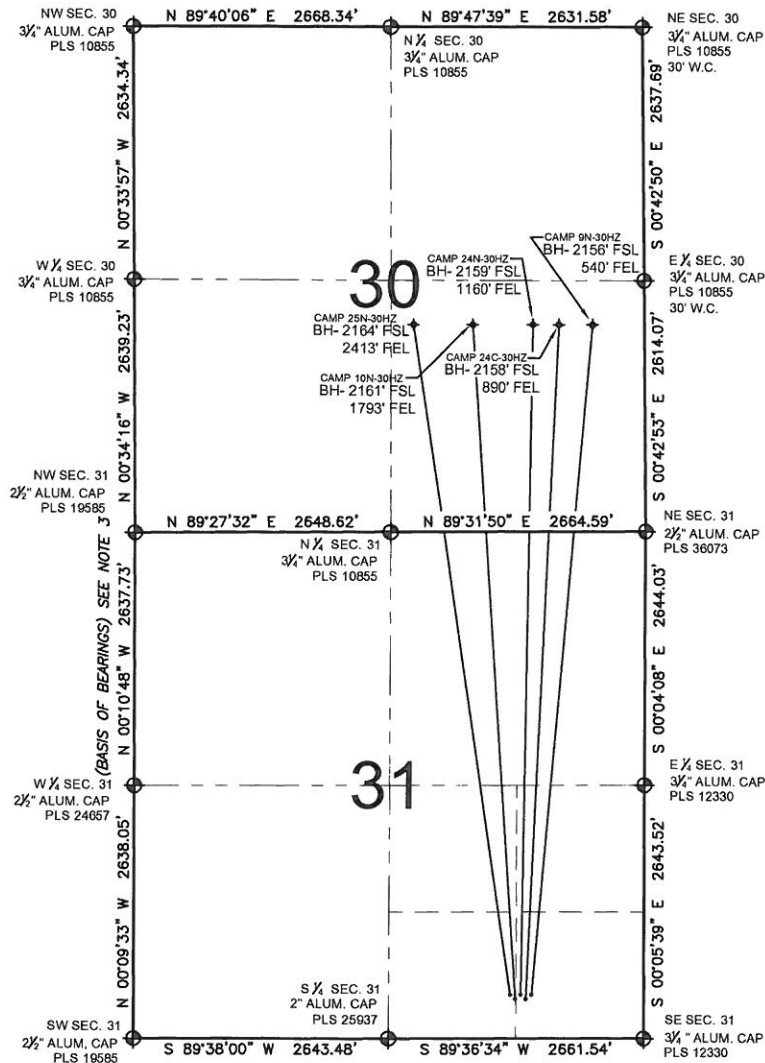


PAD DRAWING: CAMP 5 PAD

SECTION 31, TOWNSHIP 3 NORTH, RANGE 65 WEST, 6TH P.M.



LEGEND

- ⊕ = EXISTING MONUMENT
- ⊕ = BOTTOM HOLE
- ⊕ = PROPOSED WELL
- ⊕ = EXISTING WELL
- BH= BOTTOM HOLE

NOTES:

- THIS FIELD SURVEY CONFORMS TO THE MINIMUM STANDARDS SET BY THE C.O.G.C.C., RULE NO. 215
- HORIZONTAL POSITIONS AND ORTHOMETRIC ELEVATIONS SHOWN AT THE WELL HEAD, ARE BASED ON GPS-RTK POSITIONS DERIVED FROM MINIMUM 2-HOUR STATIC OBSERVATIONS CORRECTED BY THE NATIONAL GEODETIC SURVEY ONLINE POSITIONING USER SERVICE, O.P.U.S.
DATUM: HORIZONTAL = NAD83/2007, VERTICAL = NAVD88
- THE BASIS OF BEARINGS ARE STATE PLANE COORDINATE SYSTEM GRID BEARINGS SHOWN HEREON BETWEEN THE DESCRIBED THE MONUMENTS SHOWN HEREON.
- GRID DISTANCES ARE SHOWN, AS MEASURED IN THE FIELD, WITH TIES TO WELLS MEASURED PERPENDICULAR TO SECTION LINES.

NOTES:

- CAMP 25N-30HZ TO BE AT 460' FSL, 1357' FEL.
 BOTTOM HOLE AT 2164' FSL & 2413' FEL.
 CAMP 10N-30HZ TO BE AT 450' FSL, 1338' FEL.
 BOTTOM HOLE AT 2161' FSL & 1793' FEL.
 CAMP 24N-30HZ TO BE AT 460' FSL, 1319' FEL.
 BOTTOM HOLE AT 2159' FSL & 1160' FEL.
 CAMP 24C-30HZ TO BE AT 450' FSL, 1301' FEL.
 BOTTOM HOLE AT 2158' FSL & 890' FEL.
 CAMP 9N-30HZ TO BE AT 460' FSL, 1282' FEL.
 BOTTOM HOLE AT 2156' FSL & 540' FEL.

PREPARED BY:



KERR-MCGEE OIL & GAS ONSHORE LP

FIELD DATE: 11-11-11	PAD NAME: CAMP 5 PAD
DRAWING DATE: 11-15-11	SURFACE LOCATION: WELD COUNTY, COLORADO SW 1/4 SE 1/4, SEC. 31, T3N, R65W, 6TH P.M. SE 1/4 SE 1/4, SEC. 31, T3N, R65W, 6TH P.M.
BY: SMF	



0 1000 2000
 SCALE: 1"=2000'