

MARATHON OIL CO.
CROW VALLEY 7-62-23-2H & 7-62-14-2H
 LOCATED WITHIN NE/4 NW/4 OF SECTION 23 T7N R62W
 OF THE 6TH P.M., WELD COUNTY, COLORADO

PHOTO "A" TAKEN FROM THE SOUTH LOOKING NORTH



CROW VALLEY 7-62-23-2H North.jpg

11/4/2011

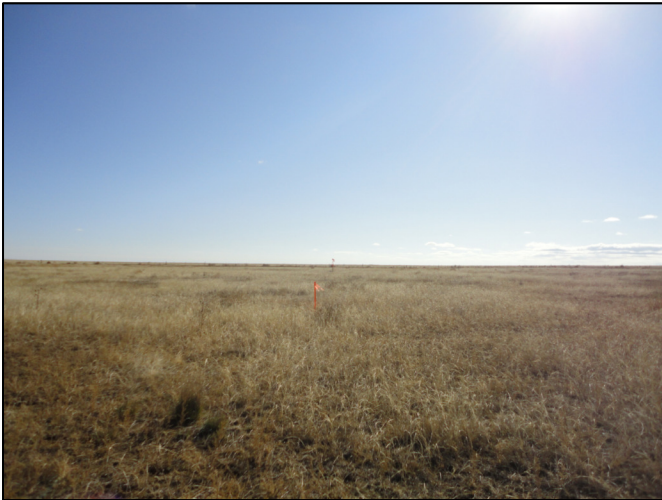
PHOTO "B" TAKEN FROM THE WEST LOOKING EAST



CROW VALLEY 7-62-23-2H East.jpg

11/4/2011

PHOTO "C" TAKEN FROM THE NORTH LOOKING SOUTH



CROW VALLEY 7-62-23-2H South.jpg

11/4/2011

PHOTO "D" TAKEN FROM THE EAST LOOKING WEST



CROW VALLEY 7-62-23-2H West.jpg

11/4/2011

CONFIDENTIALITY NOTES:

The information contained in this plat is legally privileged and confidential information intended only for the use of the recipients. If you are not the intended recipients, you are hereby notified that any use, dissemination, distribution or copying of this information is strictly prohibited.



**WILLIAM H. SMITH
& ASSOCIATES P.C.**

SURVEYING CONSULTANTS
 550 EAST SECOND NORTH PHONE: 307-875-3638
 GREEN RIVER, WY 307-875-3639
 www.whsmithpc.com

DRAWN BY: BW

CHECKED BY: RAW

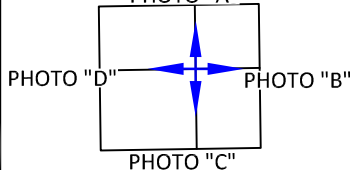
PROJECT NO: 762232H

JOB NO: 2011001

REVISIONS: LAL 2/15/12 REVISED PHOTO C

LEGEND

PHOTO "A"



LOCATION:

CROW VALLEY
 7-62-23-2H &
 7-62-14-2H
 WITHIN THE NE/4
 NW/4 SECTION 23,
 T 7 N, R 62 W,
 6TH PM.
 WELD COUNTY,
 COLORADO

MARATHON OIL COMPANY
 PO BOX 3128, HOUSTON TX, 77253
 5555 SAN FELIPE, HOUSTON TX, 77056

WELL LOCATION PICTURES

SCALE: N/A

EXHIBIT "B"

DATE: 1/13/2012

SHEET 1 OF 15