

CONFIDENTIALITY NOTES:

The information contained in this plat is legally privileged and confidential information intended only for the use of the recipients. If you are not the intended recipients, you are hereby notified that any use, dissemination, distribution or copying of this information is strictly prohibited.



**WILLIAM H. SMITH
& ASSOCIATES P.C.**

SURVEYING CONSULTANTS
650 EAST SECOND NORTH PHONE: 307-875-3638
GREEN RIVER, WY 307-875-3639
www.whsmithpc.com

DRAWN BY: BW CHECKED BY: RAW
PROJECT NO: 762232H JOB NO: 2011001
REVISIONS:

LEGEND

400' PERIMETER
PROPOSED ACCESS
EXISTING FENCE
EXISTING OHP
SECTION LINE
1/16TH LINE

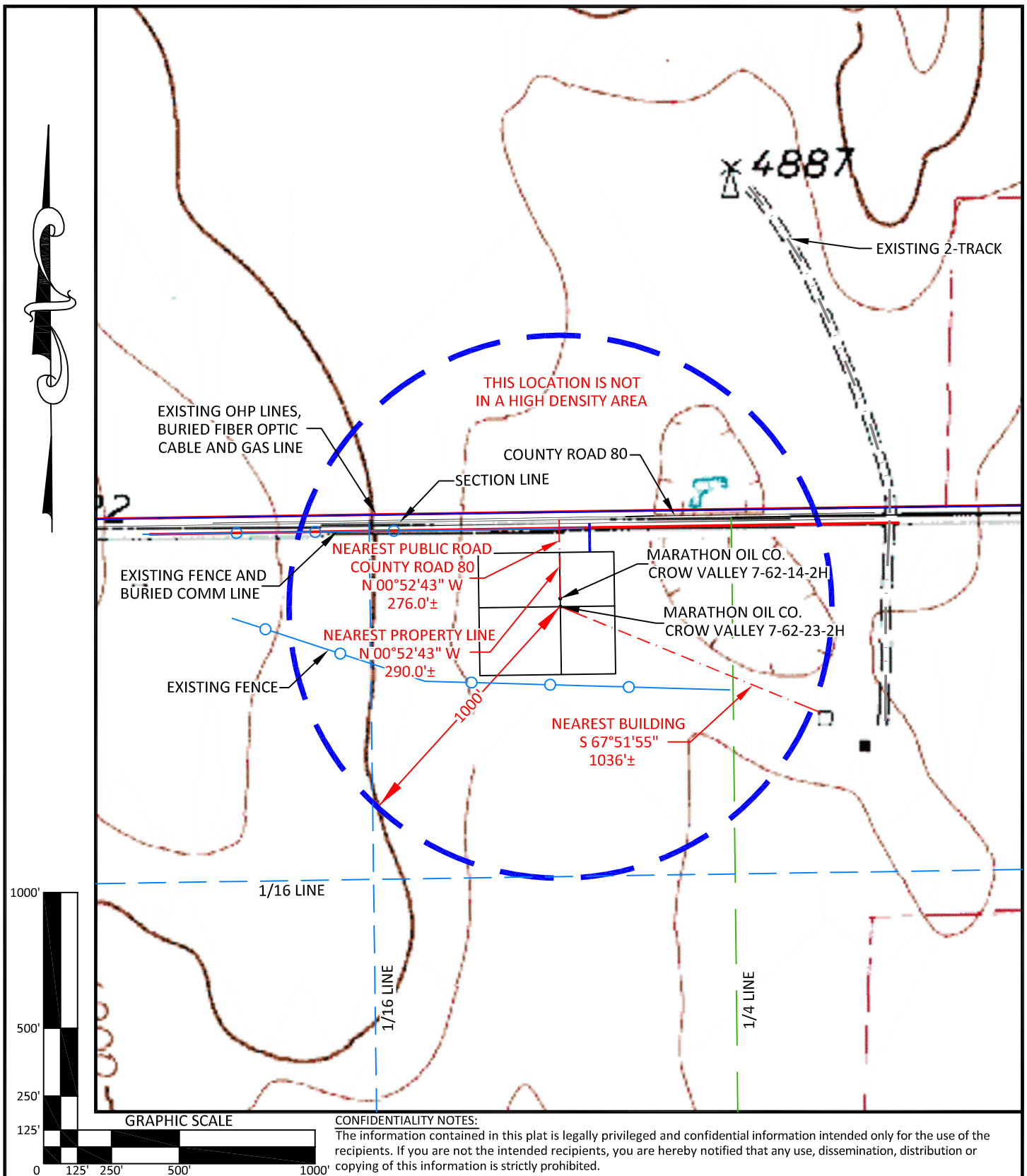
LOCATION:

CROW VALLEY
7-62-23-2H &
7-62-14-2H
WITHIN THE NE/4
NW/4 SECTION 23,
T 7 N, R 62 W,
6TH PM.
WELD COUNTY,
COLORADO

MARATHON OIL COMPANY
PO BOX 3128, HOUSTON TX, 77253
5555 SAN FELIPE, HOUSTON TX, 77056

LOCATION DRAWING

SCALE: 1"=200'
DATE: 1/13/2012
EXHIBIT "C"
SHEET 2 OF 15



CONFIDENTIALITY NOTES:
 The information contained in this plat is legally privileged and confidential information intended only for the use of the recipients. If you are not the intended recipients, you are hereby notified that any use, dissemination, distribution or copying of this information is strictly prohibited.



**WILLIAM H. SMITH
& ASSOCIATES P.C.**
 SURVEYING CONSULTANTS
 650 EAST SECOND NORTH PHONE: 307-875-3638
 GREEN RIVER, WY 307-875-3639
 www.whsmithpc.com

DRAWN BY: BW	CHECKED BY: RAW
PROJECT NO: 762232H	JOB NO: 2011001
REVISIONS:	

LEGEND	
1000' RADIUS	
PROPOSED ACCESS	
EXISTING 2-TRACK	
FENCE	
1/16 LINE	
1/4 LINE	
SECTION LINE	

LOCATION:
 CROW VALLEY
 7-62-23-2H &
 7-62-14-2H
 WITHIN THE NE/4
 NW/4 SECTION 23,
 T 7 N, R 62 W,
 6TH PM.
 WELD COUNTY,
 COLORADO

MARATHON OIL COMPANY PO BOX 3128, HOUSTON TX, 77253 5555 SAN FELIPE, HOUSTON TX, 77056	
CULTURE MAP	
SCALE: 1"=500'	EXHIBIT "H"
DATE: 1/13/2012	SHEET 7 OF 15