

SCALE: 1" = 100'
CONTOUR INTERVAL 1'

EXISTING OHP LINE
BURIED FIBER OPTIC CABLE AND GAS LINE
PROPOSED CULVERT
NORTH LINE SEC. 23
COUNTY ROAD NO. 80

PROPOSED BERM
2:1 SLOPES
EXISTING FENCE
AREA FOR SNOW REMOVAL
PROPOSED ACCESS ROAD
BURIED COMM. LINE

500.00'
300.00'
200.00'
200.00'

CUT
FILL

MARATHON OIL CO.
CROW VALLEY 7-62-14-2H
N 89°09'41" E
3+50
2+00
0+00

LAYDOWN
N 89°09'41" E

MARATHON OIL CO.
CROW VALLEY 7-62-23-2H
PROPOSED PAD
ELEVATION 4884.7'

EARTHEN BERM
AROUND FILL SECTION
18" HIGH, 24" WIDE

SPOIL PILE
TOPSOIL PILE

C5.4
C5.2
C5.9
F0.4
F3.0
F2.9
F1.7
C0.2
C0.3
C0.4

4892
4891
4888
4887
4884
4883
4882
4883
4886
4887
4888
4889
4890
4891
4893
4894
4895

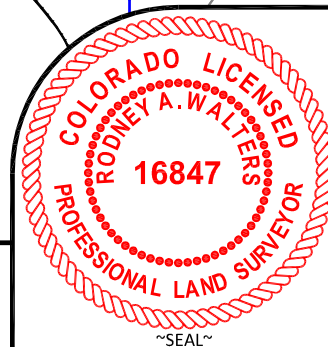
70'±
7.5'

250.00'
450.00'
250.00'
300.00'
500.00'

5+00
3+50
2+00
0+00

COLORADO LICENSED
RODNEY A. WALTERS
16847
PROJECT ENGINEER

- Elevation of pad shown on plans are to constructed pad without final gravel padding placement. Depth, volume, and padding material to be determined by operator.
- The information contained in this plat is legally privileged and confidential information intended only for the use of the recipients. If you are not the intended recipients, you are hereby notified that any use, dissemination, distribution or copying of this information is strictly prohibited.



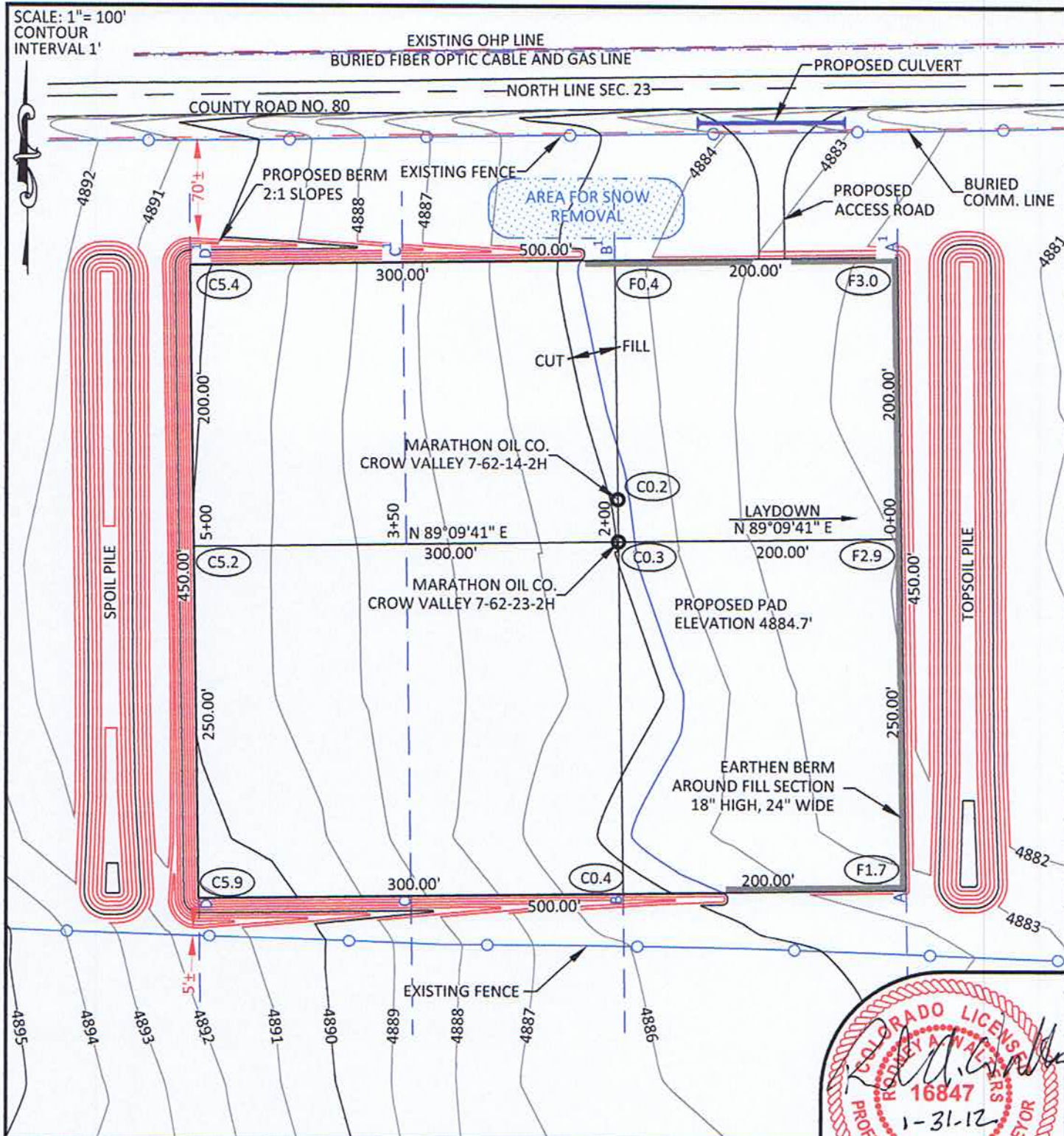
CUT SLOPE:	2:1
FILL SLOPE:	3:1
TOTAL CUT:	16,766 CU. YDS.
TOTAL FILL:	8,080 CU. YDS.
TOP SOIL AT 6"	4,618 CU. YDS.
SPOIL	4,067 CU. YDS.
DISTURBED AREA	249,380 SQ. FT.
DISTURBED AREA	5.72 ACRES

CROW VALLEY
7-62-23-2H &
7-62-14-2H
WITHIN THE NE/4
NW/4 SECTION 23,
T 7 N, R 62 W,
6TH PM.
WELD COUNTY,
COLORADO

PO BOX 3128, HOUSTON TX, 77253
5555 SAN FELIPE, HOUSTON TX, 77056

1946' FWL	320' FNL
SCALE: 1"=100'	EXHIBIT "I"
DATE: 1/13/2012	SHEET 8 OF 15

SCALE: 1" = 100'
CONTOUR
INTERVAL 1'



NOTES:

- Elevation of pad shown on plans are to constructed pad without final gravel padding placement. Depth, volume, and padding material to be determined by operator.
- The information contained in this plat is legally privileged and confidential information intended only for the use of the recipients. If you are not the intended recipients, you are hereby notified that any use, dissemination, distribution or copying of this information is strictly prohibited.



**WILLIAM H. SMITH
& ASSOCIATES P.C.**
SURVEYING CONSULTANTS
550 EAST SECOND NORTH
GREEN RIVER, WY 82430
PHONE: 307-875-3638
307-875-3639
www.whsmithpc.com

CONSTRUCTION DATA

CUT SLOPE:	2:1
FILL SLOPE:	3:1
TOTAL CUT:	16,766 CU. YDS.
TOTAL FILL:	8,080 CU. YDS.
TOP SOIL AT 6"	4,618 CU. YDS.
SPOIL:	4,067 CU. YDS.
DISTURBED AREA	249,380 SQ. FT.
DISTURBED AREA	5.72 ACRES

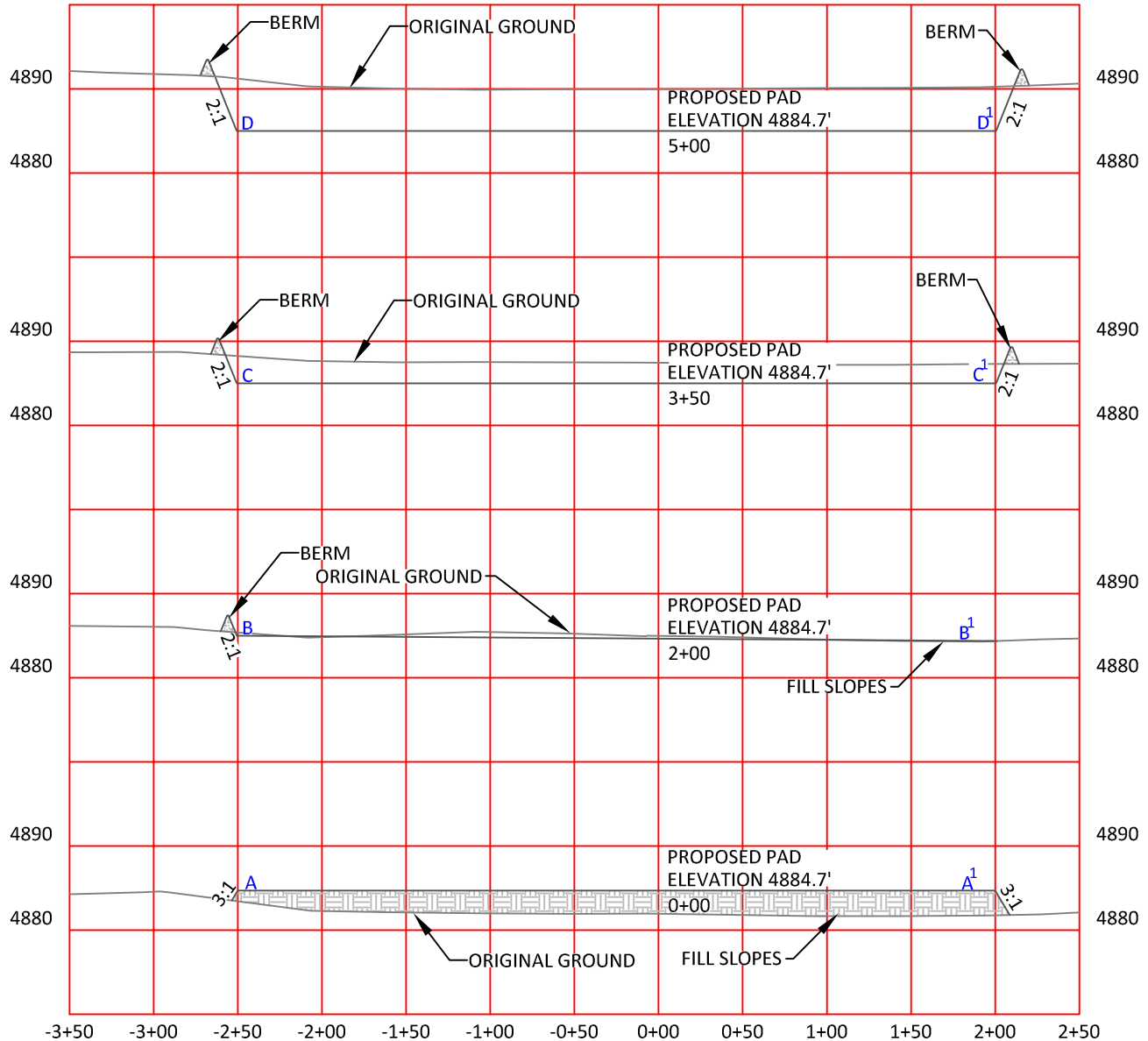
LOCATION:

CROW VALLEY
7-62-23-2H &
7-62-14-2H
WITHIN THE NE/4
NW/4 SECTION 23,
T 7 N, R 62 W,
6TH PM.
WELD COUNTY,
COLORADO

MARATHON OIL COMPANY
PO BOX 3128, HOUSTON TX, 77253
5555 SAN FELIPE, HOUSTON TX, 77056

CONSTRUCTION LAYOUT

1946' FWL	320' FNL
SCALE: 1"=100'	EXHIBIT "I"
DATE: 1/13/2012	SHEET 8 OF 15



HORIZONTAL SCALE: 1"=100' - VERTICAL SCALE: 1"=20'

NOTES:

Elevation of pad shown on plans are to constructed pad without final gravel padding placement. Depth, volume, and padding material to be determined by operator. The information contained in this plat is legally privileged and confidential information intended only for the use of the recipients. If you are not the intended recipients, you are hereby notified that any use, dissemination, distribution or copying of this information is strictly prohibited.



**WILLIAM H. SMITH
& ASSOCIATES P.C.**

SURVEYING CONSULTANTS

550 EAST SECOND NORTH PHONE: 307-875-3638
GREEN RIVER, WY 307-875-3639
www.whsmithpc.com

DRAWN BY: BW CHECKED BY: RAW
PROJECT NO: 762232H JOB NO: 2011001
REVISIONS:

CONSTRUCTION DATA

CUT SLOPE:	2:1
FILL SLOPE:	3:1
TOTAL CUT:	16,766 CU. YDS.
TOTAL FILL:	8,080 CU. YDS.
TOP SOIL AT 6"	4,618 CU. YDS.
SPOIL	4,067 CU. YDS.
DISTURBED AREA	249,380 SQ. FT.
DISTURBED AREA	5.72 ACRES

LOCATION:

CROW VALLEY
7-62-23-2H &
7-62-14-2H
WITHIN THE NE/4
NW/4 SECTION 23,
T 7 N, R 62 W,
6TH PM.
WELD COUNTY,
COLORADO

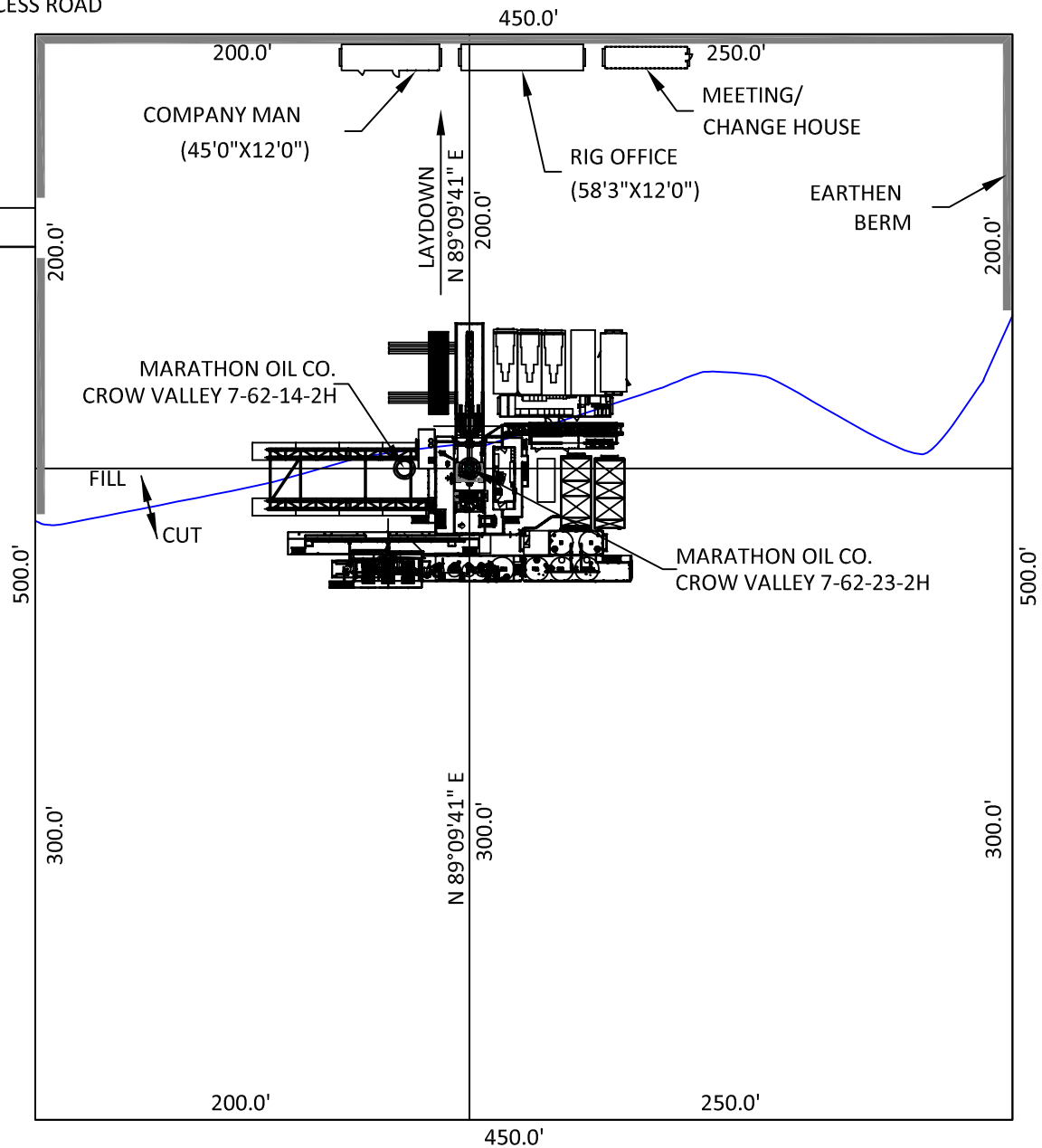
MARATHON OIL COMPANY
PO BOX 3128, HOUSTON TX, 77253
5555 SAN FELIPE, HOUSTON TX, 77056

**CONSTRUCTION LAYOUT
CROSS SECTIONS**

SCALE: AS NOTED EXHIBIT "J"
DATE: 1/13/2012 SHEET 9 OF 15



PROPOSED
ACCESS ROAD



**WILLIAM H. SMITH
& ASSOCIATES P.C.**
SURVEYING CONSULTANTS

550 EAST SECOND NORTH PHONE: 307-875-3638
GREEN RIVER, WY 307-875-3639
www.whsmithpc.com

DRAWN BY: BW CHECKED BY: RAW
PROJECT NO: 762232H JOB NO: 2011001
REVISIONS:

CONFIDENTIALITY NOTES:

The information contained in this plat is legally privileged and confidential information intended only for the use of the recipients. If you are not the intended recipients, you are hereby notified that any use, dissemination, distribution or copying of this information is strictly prohibited.

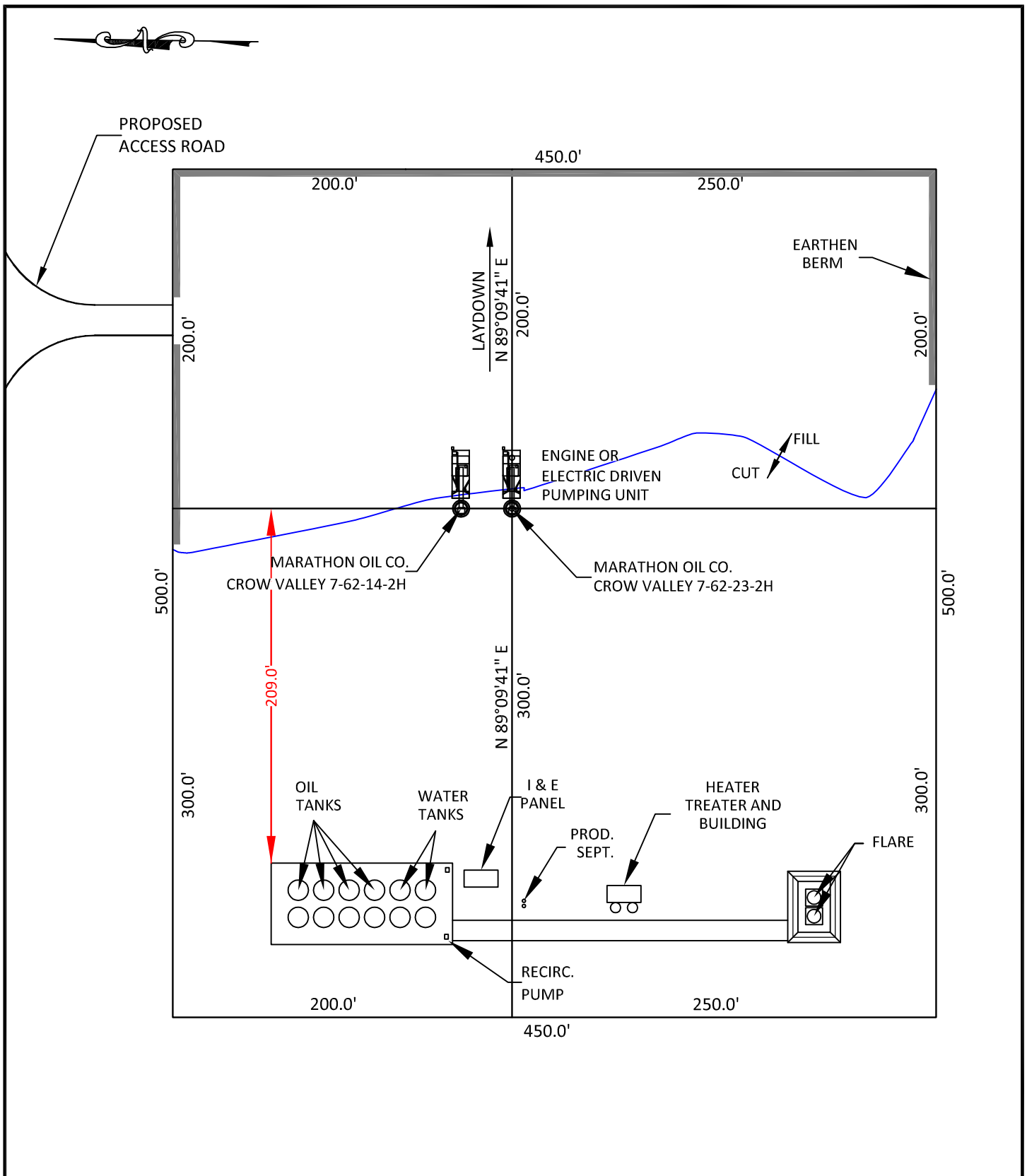
LOCATION:

CROW VALLEY
7-62-23-2H &
7-62-14-2H
WITHIN THE NE/4
NW/4 SECTION 23,
T 7 N, R 62 W,
6TH PM.
WELD COUNTY,
COLORADO

MARATHON OIL COMPANY
PO BOX 3128, HOUSTON TX, 77253
5555 SAN FELIPE, HOUSTON TX, 77056

DRILLING FACILITIES

SCALE: 1"=80' EXHIBIT "K"
DATE: 1/13/2012 SHEET 10 OF 15



**WILLIAM H. SMITH
& ASSOCIATES P.C.**

SURVEYING CONSULTANTS
550 EAST SECOND NORTH PHONE: 307-875-3638
GREEN RIVER, WY 307-875-3639
www.whsmithpc.com

DRAWN BY: BW	CHECKED BY: RAW
PROJECT NO: 762232H	JOB NO: 2011001
REVISIONS:	

CONFIDENTIALITY NOTES:

The information contained in this plat is legally privileged and confidential information intended only for the use of the recipients. If you are not the intended recipients, you are hereby notified that any use, dissemination, distribution or copying of this information is strictly prohibited.

LOCATION:

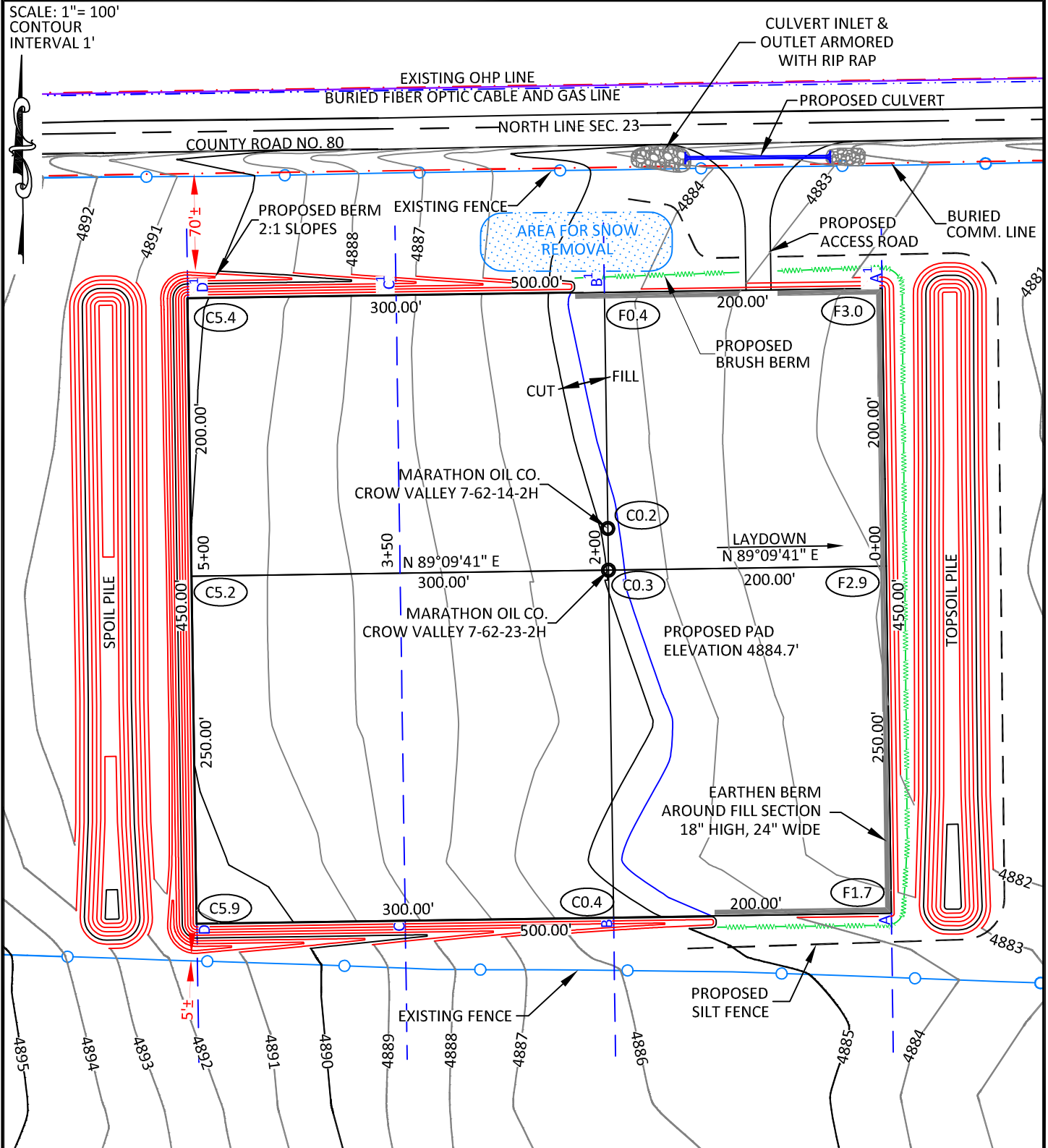
CROW VALLEY
7-62-23-2H &
7-62-14-2H
WITHIN THE NE/4
NW/4 SECTION 23,
T 7 N, R 62 W,
6TH PM.
WELD COUNTY,
COLORADO

MARATHON OIL COMPANY
PO BOX 3128, HOUSTON TX, 77253
5555 SAN FELIPE, HOUSTON TX, 77056

PRODUCTION FACILITIES

SCALE: 1"=80'	EXHIBIT "L"
DATE: 1/13/2012	SHEET 11 OF 15

SCALE: 1"= 100'
CONTOUR
INTERVAL 1'



CONFIDENTIALITY NOTES:

The information contained in this plat is legally privileged and confidential information intended only for the use of the recipients. If you are not the intended recipients, you are hereby notified that any use, dissemination, distribution or copying of this information is strictly prohibited.



**WILLIAM H. SMITH
& ASSOCIATES P.C.**
SURVEYING CONSULTANTS

550 EAST SECOND NORTH PHONE: 307-875-3638
GREEN RIVER, WY 307-875-3639
www.whsmithpc.com

DRAWN BY: BW

CHECKED BY: RAW

PROJECT NO: 762232H

JOB NO: 2011001

REVISIONS:

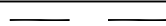
LEGEND

SILT FENCE

EXISTING FENCE

BRUSH BERM

RIP RAP



LOCATION:

CROW VALLEY
7-62-23-2H &
7-62-14-2H
WITHIN THE NE/4
NW/4 SECTION 23,
T 7 N, R 62 W,
6TH PM.
WELD COUNTY,
COLORADO

MARATHON OIL COMPANY
PO BOX 3128, HOUSTON TX, 77253
5555 SAN FELIPE, HOUSTON TX, 77056

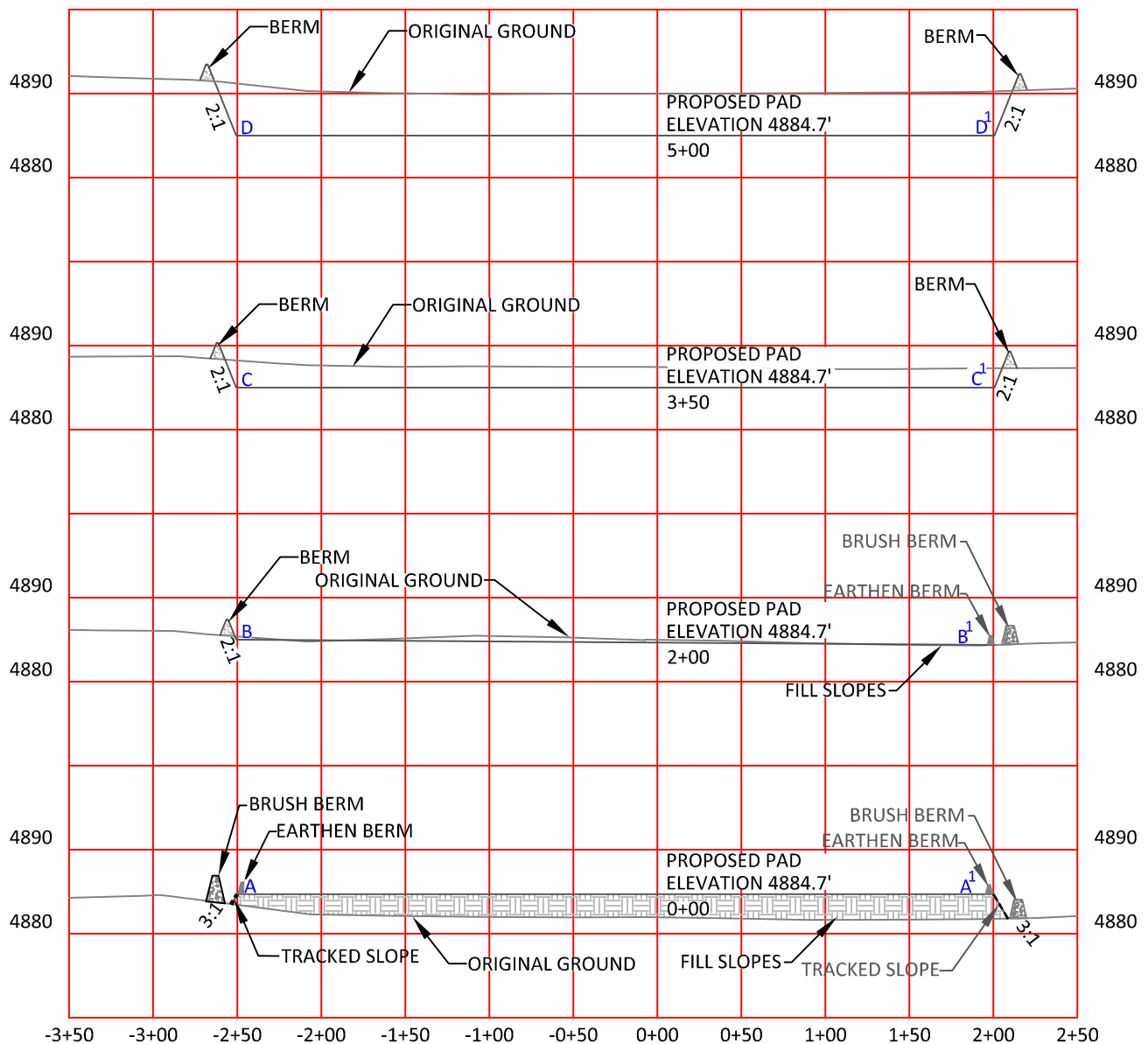
**STORM WATER
PREVENTION PLAN**

SCALE: AS NOTED

DATE: 1/13/2012

EXHIBIT "M"

SHEET 12 OF 15



HORIZONTAL SCALE: 1"=100'
VERTICAL SCALE: 1"=20'



**WILLIAM H. SMITH
& ASSOCIATES P.C.**

SURVEYING CONSULTANTS
550 EAST SECOND NORTH PHONE: 307-875-3638
GREEN RIVER, WY 307-875-3639
www.whsmithpc.com

DRAWN BY: BW CHECKED BY: RAW
PROJECT NO: 762232H JOB NO: 2011001
REVISIONS:

CONFIDENTIALITY NOTES:

The information contained in this plat is legally privileged and confidential information intended only for the use of the recipients. If you are not the intended recipients, you are hereby notified that any use, dissemination, distribution or copying of this information is strictly prohibited.

LOCATION:

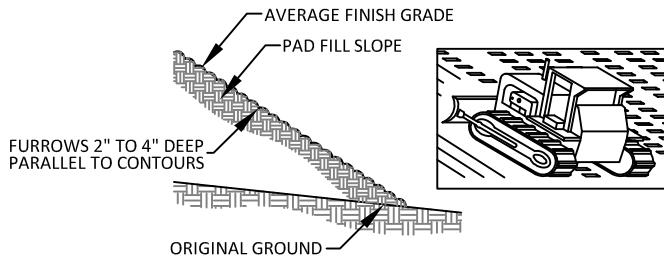
CROW VALLEY
7-62-23-2H &
7-62-14-2H
WITHIN THE NE/4
NW/4 SECTION 23,
T 7 N, R 62 W,
6TH PM.
WELD COUNTY,
COLORADO

MARATHON OIL COMPANY
PO BOX 3128, HOUSTON TX, 77253
5555 SAN FELIPE, HOUSTON TX, 77056

**STORM WATER PREVENTION
CROSS SECTIONS**

SCALE: AS NOTED EXHIBIT "N"
DATE: 1/13/2012 SHEET 13 OF 15

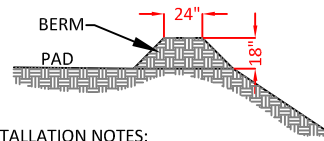
A. FILL SLOPE TRACKING DETAILS



INSTALLATION NOTES:

1. DISTURBED SURFACES SHALL BE ROUGHENED USING RIPPING OR TILLING EQUIPMENT ON THE CONTOURS OR TRACKING UP AND DOWN THE SLOPE USING EQUIPMENT TREADS

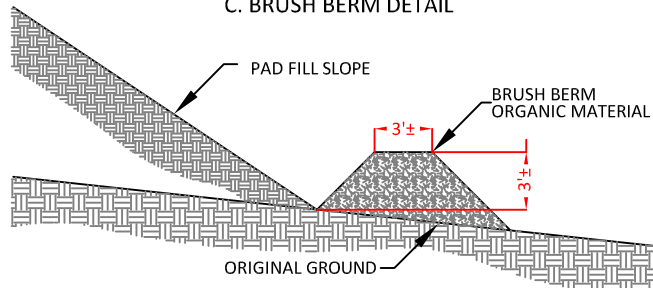
B. EARTHEN BERM DETAIL



INSTALLATION NOTES:

1. BERM SHALL BE CONSTRUCTED OF WELL COMPACTED GRANULAR MATERIAL.
2. BERM SHALL BE CONSTRUCTED ON THE PERIMETER OF THE PAD IN ALL AREAS THAT COULD RECEIVE STORMWATER RUNOFF.
3. DIMENSIONS ARE APPROXIMATE. FIELD CONDITIONS WILL DETERMINE ACTUAL DIMENSIONS OF STRUCTURE.

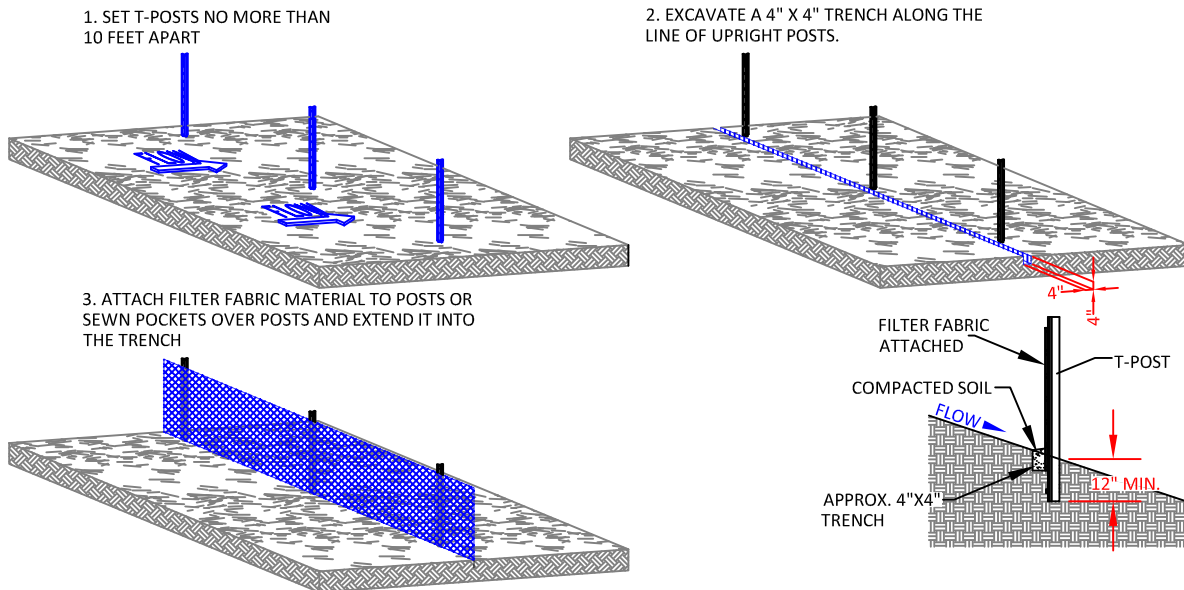
C. BRUSH BERM DETAIL



INSTALLATION NOTES:

1. BERM TO BE CONSTRUCTED AFTER SITE HAS BEEN GRUBBED PRIOR TO PAD CONSTRUCTION.
2. ONSITE ORGANIC MATERIAL TO BE PUSHED INTO BERM ON EDGE PERIMETER OF FILL SLOPE IN A MANNER NOT TO CREATE ADDITIONAL DISTURBANCE BEYOND THE CATCH LINE.
3. BERM TO BE COMPACTED WITH FRONT END LOADER BUCKET OR SIMILAR METHOD TO ACHIEVE ADEQUATE COMPACTION.

D. SILT FENCE DETAILS



CONFIDENTIALITY NOTES:

The information contained in this plat is legally privileged and confidential information intended only for the use of the recipients. If you are not the intended recipients, you are hereby notified that any use, dissemination, distribution or copying of this information is strictly prohibited.



**WILLIAM H. SMITH
& ASSOCIATES P.C.**

SURVEYING CONSULTANTS
550 EAST SECOND NORTH PHONE: 307-875-3638
GREEN RIVER, WY 307-875-3639
www.whsmithpc.com

DRAWN BY: BW

CHECKED BY: RAW

PROJECT NO: 762232H

JOB NO: 2011001

REVISIONS:

USED ON THIS SITE

- A: FILL SLOPE TRACKING
B: EARTHEN BERM AT TOP OF SLOPE AROUND FILL SECTIONS
C: BRUSH BERM AT TOE OF SLOPE AROUND FILL SECTIONS
D: SILT FENCE

LOCATION:

CROW VALLEY
7-62-23-2H &
7-62-14-2H
WITHIN THE NE/4
NW/4 SECTION 23,
T 7 N, R 62 W,
6TH PM.
WELD COUNTY,
COLORADO

MARATHON OIL COMPANY
PO BOX 3128, HOUSTON TX, 77253
5555 SAN FELIPE, HOUSTON TX, 77056

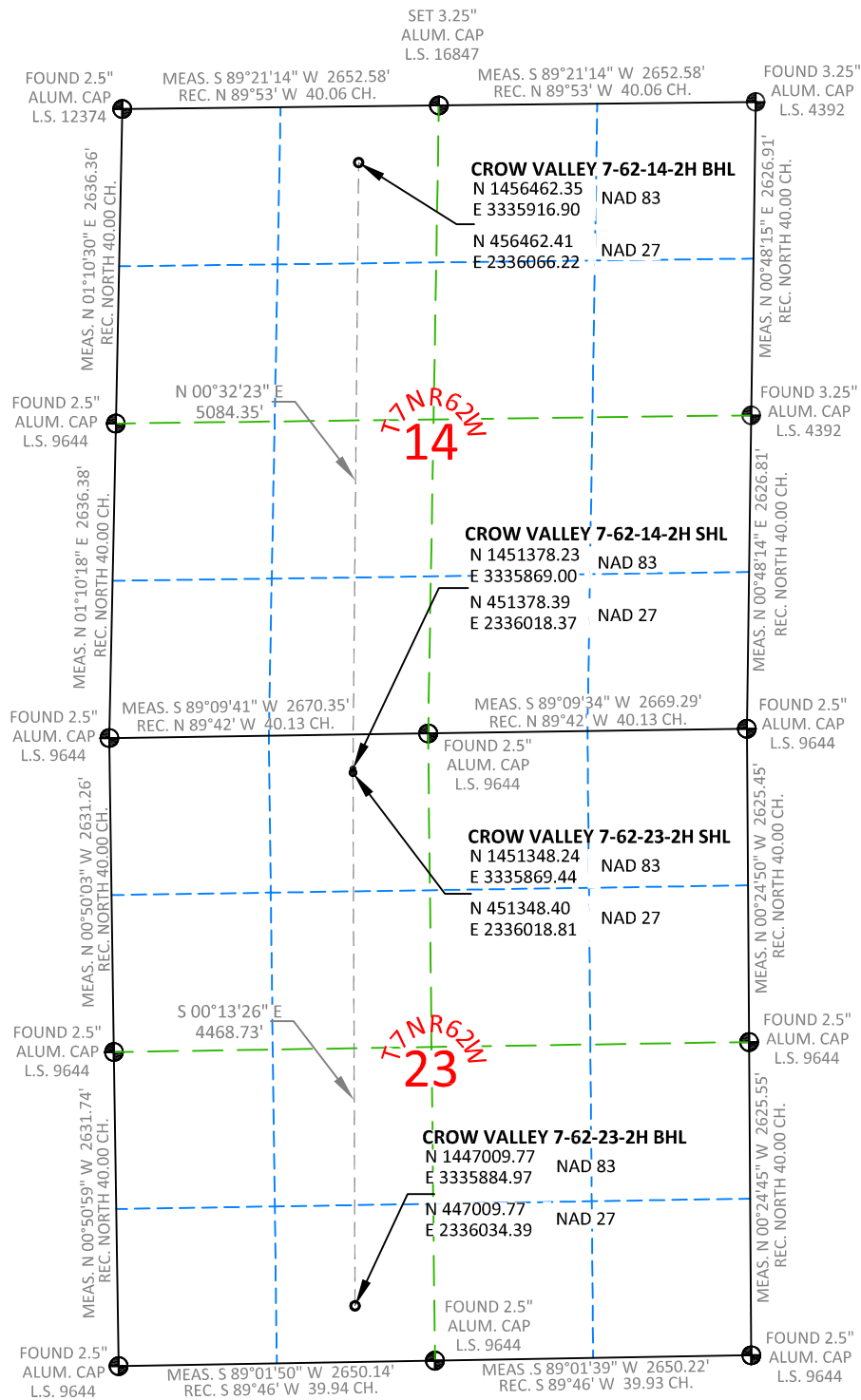
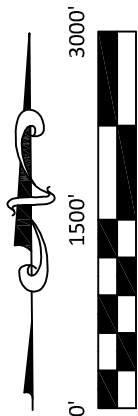
STORM WATER PREVENTION DETAILS

SCALE: NOT TO SCALE

EXHIBIT "O"

DATE: 1/13/2012

SHEET 14 OF 15



NOTES:

- All bearings and distances are **GRID**, based on the Colorado State Plane Coordinate System, North Zone, North American Datum 1983 from GPS observations occupying a WHS control point (5/8" rebar) and having the Location and Elevation derived from an Opus Solution.
- Vertical Datum used is of NAVD 88.
- Record Bearings and Distances as shown are based on the General Land Office Survey plat approved on the 16th day of December 1872.



**WILLIAM H. SMITH
& ASSOCIATES P.C.**

SURVEYING CONSULTANTS

550 EAST SECOND NORTH GREEN RIVER, WY
PHONE: 307-875-3638
307-875-3639
www.whsmithpc.com

DRAWN BY: BW

CHECKED BY: RAW

PROJECT NO: 762232H

JOB NO: 2011001

REVISIONS:

CONFIDENTIALITY NOTES:

The information contained in this plat is legally privileged and confidential information intended only for the use of the recipients. If you are not the intended recipients, you are hereby notified that any use, dissemination, distribution or copying of this information is strictly prohibited.

LOCATION:

CROW VALLEY
7-62-23-2H &
7-62-14-2H
WITHIN THE NE/4
NW/4 SECTION 23,
T 7 N, R 62 W,
6TH PM.
WELD COUNTY,
COLORADO

MARATHON OIL COMPANY
PO BOX 3128, HOUSTON TX, 77253
5555 SAN FELIPE, HOUSTON TX, 77056

MULTI WELL PAD

SCALE: 1"=1500'

EXHIBIT "P"

DATE: 1/13/2012

SHEET 15 OF 15