

CONFIDENTIALITY NOTES:
The information contained in this plat is legally privileged and confidential information intended only for the use of the recipients. If you are not the intended recipients, you are hereby notified that any use, dissemination, distribution or copying of this information is strictly prohibited.



**WILLIAM H. SMITH
& ASSOCIATES P.C.**
SURVEYING CONSULTANTS

550 EAST SECOND NORTH PHONE: 307-875-3638
GREEN RIVER, WY 307-875-3639
www.whsmithpc.com

DRAWN BY: BW	CHECKED BY: RAW
PROJECT NO: 762232H	JOB NO: 2011001
REVISIONS:	

LEGEND

PROPOSED ACCESS	
EXISTING 2-TRACK	
EXISTING ROAD	
1/16TH LINE	
1/4 LINE	
SECTION LINE	
FENCE	

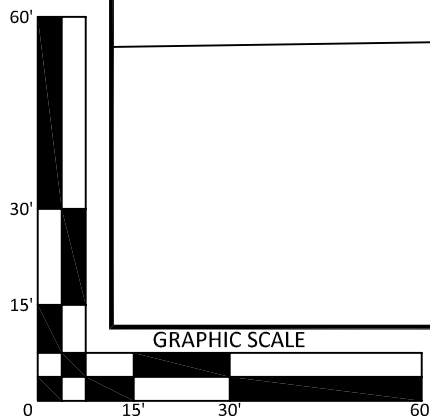
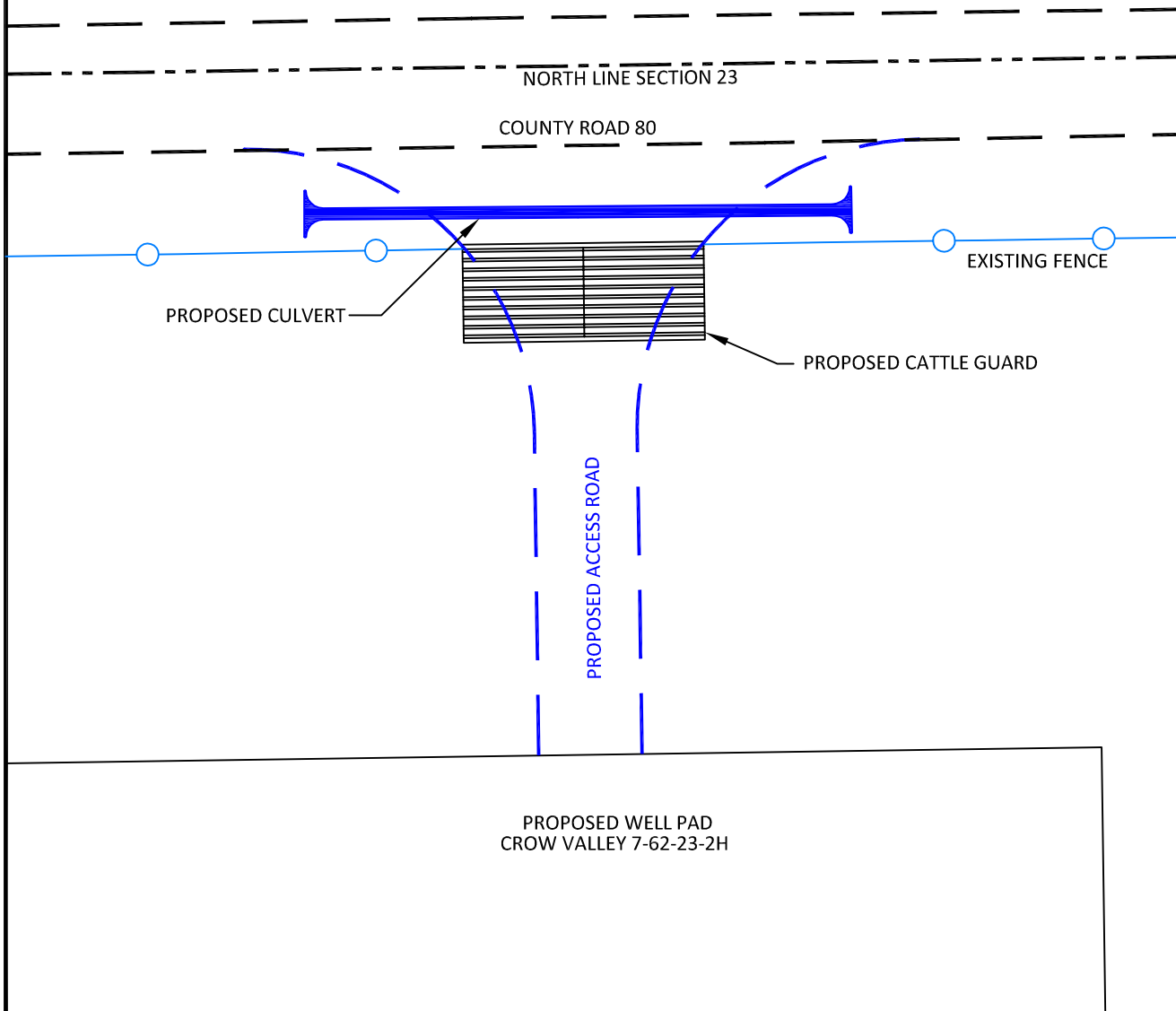
LOCATION:

CROW VALLEY
7-62-23-2H &
7-62-14-2H
WITHIN THE NE/4
NW/4 SECTION 23,
T 7 N, R 62 W,
6TH PM.
WELD COUNTY,
COLORADO

MARATHON OIL COMPANY
PO BOX 3128, HOUSTON TX, 77253
5555 SAN FELIPE, HOUSTON TX, 77056

ACCESS ROAD MAP

SCALE: 1"=200'	EXHIBIT "E"
DATE: 1/13/2012	SHEET 4 OF 15



CONFIDENTIALITY NOTES:

The information contained in this plat is legally privileged and confidential information intended only for the use of the recipients. If you are not the intended recipients, you are hereby notified that any use, dissemination, distribution or copying of this information is strictly prohibited.



**WILLIAM H. SMITH
& ASSOCIATES P.C.**

SURVEYING CONSULTANTS
550 EAST SECOND NORTH PHONE: 307-875-3638
GREEN RIVER, WY 307-875-3639
www.whsmithpc.com

DRAWN BY: BW

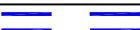
CHECKED BY: RAW


PROJECT NO: 762232H

JOB NO: 2011001

REVISIONS:

LEGEND

ACCESS ROAD 

EXISTING ROAD 

SECTION LINE 

LOCATION:

CROW VALLEY
7-62-23-2H &
7-62-14-2H
WITHIN THE NE/4
NW/4 SECTION 23,
T 7 N, R 62 W,
6TH PM.
WELD COUNTY,
COLORADO

MARATHON OIL COMPANY
PO BOX 3128, HOUSTON TX, 77253
5555 SAN FELIPE, HOUSTON TX, 77056

ACCESS ROAD ENTRANCE

SCALE: 1"=30'

DATE: 1/13/2012

EXHIBIT "A"

SHEET 1 OF 1